

# Selecting goldfish broods use the weighted product and simple

*by Rama Diani*

---

**Submission date:** 17-Jul-2024 05:35AM (UTC+0700)

**Submission ID:** 2417511069

**File name:** electing\_goldfish\_broods\_use\_the\_weighted\_product\_and\_simple.pdf (464.35K)

**Word count:** 5175

**Character count:** 25641

## Selecting goldfish broods use the weighted product and simple additive weighting methods

Ramadia<sup>3</sup>, Ramadiani<sup>1</sup>, Surya Adithama<sup>1</sup>, Muhammad Labib Jundillah<sup>2</sup>

<sup>1</sup>Department of Informatics, Faculty of Engineering, Mulawarman University, Samarinda, Indonesia

<sup>2</sup>Department of Information System, Faculty of Engineering, Mulawarman University, Samarinda, Indonesia

### Article Info

#### Article history:

Received Oct 25, 2021

Revised Jun 17, 2022

Accepted Jul 16, 2022

#### Keywords:

Decision support system  
Majalaya goldfish  
Simple additive weighting  
Superior breeder  
Weighted product

### ABSTRACT

Majalaya carp is a freshwater fish that has important economic value and is widespread in Indonesia. Goldfish is the most cultivated fish because it has many advantages both physiologically and genetically. Several factors of assessment in the selection of superior brood stock that can be considered in the cultivation of goldfish cultivators are; ideal body weight, fish movement, physical deformities, scales, and the base of the tail. All of these factors can be used as criteria in the decision-making process for superior goldfish. This study uses two methods, namely the simple additive weighting (SAW) method and the weighted product (WP) method. Based on the results of research that has been carried out on 20 superior broodfish of Majalaya goldfish, the level of accuracy is obtained by comparing with existing data. The WP method gets an accuracy value of 90% while the SAW method gets an accuracy value of 80%.

8

This is an open access article under the [CC BY-SA](https://creativecommons.org/licenses/by-sa/4.0/) license.



### Corresponding Author:

Ramadiani Ramadiani

Departement of Informatics, Faculty of Engineering, Mulawarman University

Samarinda, Indonesia 75242

Email: [ilkom.ramadiani@gmail.com](mailto:ilkom.ramadiani@gmail.com)

## 1. INTRODUCTION

Cyprinus capio (Carp) is the most widely cultivated fish because it has physical, physiological and genetic advantages. Majalaya goldfish are cultivated in swift water, which is a pond where the water flows continuously in a certain amount. For fish farmers who are just learning Majalaya goldfish, they still find it difficult to determine superior brood fish. There are several alternatives and indicators in choosing superior sires of Majalaya goldfish. Factors that can be considered in aquaculture by Majalaya goldfish cultivators include body weight, fish movement, physical abnormalities, shape of scales, and shape of the base of the tail. The decision support system (DSS) that is expected to provide recommendations and alternative information media options for novice carp cultivators. So that it can help Majalaya goldfish cultivators choose superior broodstock for high quality Majalaya carp cultivation [1]–[8].

The system that is built will produce the right decision recommendations, must be supported by the right method as well. In certain cases, such as the case of selecting superior carp broodstock. This study will compare two methods where one method will be selected based on comparative calculations for the decision-making process. The method used in this study is the simple additive weighting (SAW) method with the weighted product (WP) method. Based on the background described above, a DSS is needed using the "WP method and SAW method to select Majalaya superior carp brooders" as the best solution recommendations [9]–[12]. Previous studies related to this research include; Research conducted in 2019 [11] used the WP method with criteria such as size, weight, color, physical defects, and even water conditions. The results showed that the criteria for size, weight, color, physical defects, and even water conditions could help catfish

cultivators in choosing superior broodstock quality. Research conducted in 2020 [12] the process of making a DSS for land selection for chili plants with the WP method with predetermined criteria and weights. Based on the results of testing the WP calculation system with manual calculations, the f<sub>15</sub> results are almost the same with an accuracy of 97.6%. The research was conducted in 2019 [1], using the SAW method and the WP method with the criteria of carp price, carp weight and carp health. The WP method got 80% accuracy and the SAW method got 60% accuracy from the total data of 10 alternative superior gurame soang breeds.

## 2. RESEARCH DESIGN

### 2.1. Majalaya goldfish

Goldfish is a freshwater fish that is of economically important value and is widely distributed in Indonesia carp have been reared since 475 BC (before christ) in China. In Indonesia, goldfish first became known in the Galuh area, Ciamis, West Java around 1810. It is one of the freshwater fishery commodities that are currently very promising and are in great demand by consumers. This fish has a high economic value from grave houses to private homes. The huge demand almost never stops especially for some local markets in Indonesia. This is certainly a profitable business opportunity for the developer of Majalaya carp aquaculture. It is the most widely cultivated carp because it has physical, physiological and genetic advantages. Majalaya goldfish began to be widely known in 1975 through intensive aquaculture of swift water pools and is now scattered in almost every entire region Indonesia as fish consumption, as shown in Figure 1. The release of fish varieties was submitted based on the results of the research of the three institutions mentioned before [1]–[6]. The criteria that have been determined on the Majalaya goldfish are C1: ideal weight, C2: fish motion, C3: physical deformity, C4: shape of scales, C5: base of tail.



Figure 1. Majalaya goldfish or carpfish

### 2.2. Research criteria

The explanation in Table 1 is the result of interviews with experts with several assessments in determining the weight value. The highest weight value determined was 5, with very important information, 4 with important information, 3 with moderately important information and 2 with less important information, as shown in Table 1. The weight value was obtained from the results of interviews with experts from the Faculty of Fisheries. The main criteria obtained are ideal weight, fish movement, physical disability, scale shape, tail base shape. the value of the weight of the physical form of the fish gets a value of 5, the largest weight because it greatly affects the selection of superior brooders, and affects the mating process. The criteria for the movement of fish are in the second largest criterion 4, the movement indicates the fish are alive, healthy and good to be spawned immediately. The criteria for ideal body weight, shape of scales, base of tail are 3. Fish weight has an effect because good fish growth affects fish quality. The shape of the scales on a goldfish has an effect because if the scales are regular then the fish is good. The base of the fish's tail will have an effect because if the fish's growth is not normal when it is young, then the fish's tail will look abnormal.

Table 1. Criteria weight value

No.	Weight	Criteria
1	Ideal weight	3
2	Physical disability	5
3	Fish move	4
4	Shape scales	3
5	Base of tail	3

#### 2.2.1. Ideal weight

The ideal weight of fish for broodstock is 3 kg per head at the age of one and a half years. Assortment of superior broodstock has a lowest weight of 2 kg to 2.5 kg and the best weight of broodstock fish is from 2.5 kg to 3 kg. Weight measurement tool using hanging scales, look at Tabel 2.

### 2.2.2. Physical disability

The record of goldfish can be watched from the form of the fish's body, if there are body defects, the stomach does not bulge and the fish head looks uneven following the shape of the body, then the fish is not suitable as a superior breeder because it can influence the mating progression. Choose fish with worthy body form. The way to find out is to directly observe the fish in the pond, as shown in Tabel 3.

### 2.2.3. Fish movement

The movement of goldfish when seen in healthiness is agile. If the movement of the fish is not agile, then the fish may get unwell and cannot be used in the assortment of superior brooders. Seeing it is by monitoring or directly observing the movement of fish in the pond, as shown in Table 4.

### 2.2.4. Shape of scale

The ideal form of goldfish scales is fish scales that look regular, not random and clean. The ideal form of scales for brooders has a neat and regular shape without defects. The base of the tail must be normal and strong, not shortened or curved, the ratio of the length of the base of the tail is longer and wider than its height. All values obtained from experts are seen using goldfish available to breeders, as shown in Table 5.

### 2.2.5. Base of the tail

The base of the tail must be normal and strong, not shortened or curved, the ratio of the length of the base of the tail is longer and wider than its height, look at Tabel 6. The ratio of the length of the base of the tail is longer and wider than its height. All values obtained from experts are seen using goldfish to breeders.

Table 2. Fish weight

Criteria	Criteria Parameter	Criteria	Value
Fish Weight	1500 gram-1900 gram	Less	2
	1901 gram-2100 gram	Quite	3
	2101 gram-2500 gram	Good	4
	2501gram-3000gram	Very good	5

Table 3. Physical disability

Criteria	Criteria Parameter	Criteria	Value
Physical disability	Fin Defects	Very Less	1
	Physical damage	Less	2
	Normal Physical	Very Good	5

Table 4. Fish motion

Criteria	Criteria Parameter	Criteria	Value
Fish Motion	Not Agile	Less	2
	Agile	Good	4
	Very Agile	Very good	5

Table 5. Shape of scale

Criteria	Criteria Parameter	Criteria	Value
Scale Shape	Irregular	Less	2
	Regular	Good	4

Table 6. Base of the tail

Criteria	Criteria Parameter	Criteria	Value
Base of Tail	Abnormal	Less	2
	Normal	Good	4

## 2.3. Use case and activity diagram

Users can see alternative goldfish brood stock, and view alternative conversions into weights. They can process calculated data for the WP method and the SAW method. They can view the recommended data after completing the data processing calculations in Figure 2. Activity diagram explains the activity paths that can be done to the system that has been built, there are five forms, namely the main page, superior goldfish brood stock data, criteria weight data, WP and SAW calculations. The main page is the initial view. Select the goldfish broodstock data menu, which is a form that displays the broodstock data that has been inputted. Weight data is a place to store data that has been normalized to criteria weights. WP calculation and SAW calculation is part of calculating the value of superior broodstock. The last process is the recommendation menu that has been ranked in the top 10 data to be used as superior breeders. The menu about carp is a menu to view information from carp and information about the explanation of the criteria, as shown in Figure 3.

*Selecting goldfish broods use the weighted product and ... (Ramadiani Ramadiani)*

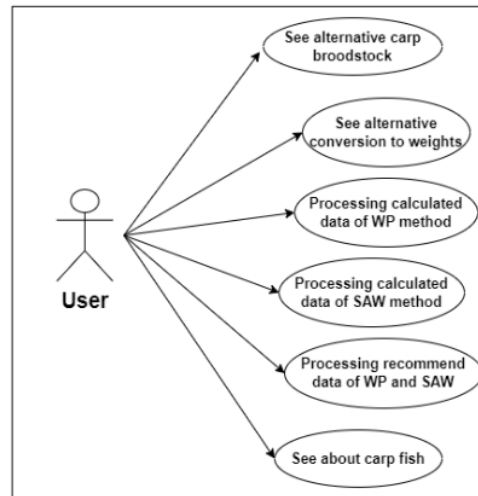


Figure 2. Use case of superior goldfish brood stock recommendation

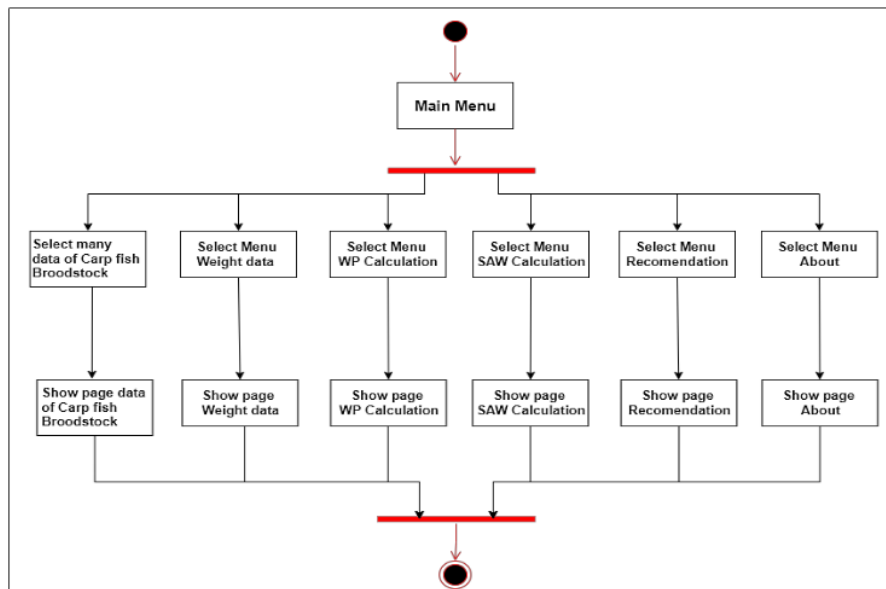


Figure 3. Activity diagram of superior goldfish brood stock recommendation

### 3. RESEARCH METHOD

#### 3.1. Simple additive weighting

The SAW method is a weighted addition method. The basic concept is to find a weighted summary of the performance ratings for each alternative on all attributes. This method normalizes the decision matrix with a scale that can be compared on all available alternative ratings. This method is grouped into various criteria, then translated from fuzzy numbers in the form of crisp numbers so that these values will be able to carry out the calculation process and find the best alternative. The following are the equations for the SAW method [1], [13]–[17], [18]–[23]. The preference value for each alternative ( $V_i$ ) is given as:

Int J Artif Intell, Vol. 11, No. 4, December 2022: 1405-1413

$$r_{ij} = \begin{cases} \frac{x_{ij}}{\text{Max}_i(x_{ij})} & \text{if } j \text{ is benefit attribute} \\ \frac{\text{Min}_i(x_{ij})}{x_{ij}} & \text{if } j \text{ is cost attribute} \end{cases} \quad (1)$$

10

The preference value for each alternative ( $V_i$ ) is given as:

$$V_i = \sum_{j=1}^n W_j r_{ij} \quad (2)$$

30

### 3.2. Weighted product

11

WP is a decision-making method by multiplying in a related attribute rating, where the rating of each attribute must be raised first with the weight of the attribute concerned. Attribute weight function [12] a positive rating, while the cost attribute, including attribute ratings, functions negatively. This method uses multiplication as the attribute rating link [21] here the rating of each attribute must be increased first with the appropriate weight [1], [12], [19]–[24]. This process is the same as the normalization process. The WP is calculated based on the interest rate. The steps in calculating the WP method are as: The process of normalizing the criteria weights ( $W$ ),  $w = 1$ .

#### 3.2.1. Determination of the weight value of $W$

$$W_j = \frac{w_j}{\sum w_j} \quad (3)$$

Description:

$W_j$  = Weight attribute

$\sum w_j$  = The sum of the weights of attributes

#### 3.2.2. Determination of the vector $S$ value

$$S_i = \prod_{j=1}^n X_{ij}^{w_j} \quad (4)$$

Description:

$S_i$  = Decisions on the normalization alternative result to -i

$X_{ij}$  = Attributes alternatives rating

$w_j$  = Attribute weight

$i$  = Alternative

$j$  = Attributes

$\prod_{j=1}^n X_{ij}^{w_j}$  = Multiplication alternative rating per attribute of  $j = 1$ -n

In this alternative where  $\sum w_j = 1$ .  $w_j$  is the rank of positive value to attribute profits, and negative values to attribute costs. Relative preference of each alternative ( $V$ ).

#### 3.2.3. Determination of vector $V$ values

$$V_i = \frac{\prod_{j=1}^n X_{ij}^{w_j}}{\prod_{j=1}^n (X_j^{w_j})_{ij}} \quad (5)$$

Description:

$V_i$  = Alternate preference result to -i

$X_{ij}$  = Rating alternate per attribute

$W_j$  = Attribute weight

$i$  = Alternative

$j$  = Attributes

$\prod_{j=1}^n X_{ij}^{w_j}$  = Multiplication alternative rating per attribute

$\prod_{j=1}^n (X_j^{w_j})_{ij}^{w_j}$  = the sum of the multiplication result per attribute alternative rating

The system built for the recommendation of superior goldfish broodstock is desktop-based. System recommendations in the form of an alternative choice of superior carp broodstock are expected to help novice sighters. They may not understand how to choose goldfish with superior broodstock criteria. The initial system

display will provide information about the usability of the system in the initial form [25]–[30]. The initial form contains some goldfish broodstock data, goldfish weight data, and WP calculations. The goldfish data form is the goldfish data that has been previously inputted. The weight data form contains alternative goldfish data that has been converted into a weight value according to the criteria. Next is the WP calculation form and SAW calculation. The data on the weighting criteria for the modified carp brooders are immediately calculated. After getting the results of the normalization of weights, then proceed with calculating the vector S. After getting the results of the vector S then calculating the value of the vector V. Implementation is the realization of the process of making an application system based on the design that has been done, as shown in Table 7.

Table 7. Results values

5	Fish code	Weight	Physical	Fish Motion	Shape	FishTail
1	F01	1	5	5	4	4
2	F02	3	5	5	2	4
3	F03	1	2	4	4	4
4	F04	1	5	5	4	4
5	F05	5	5	2	4	4
6	F06	5	2	5	4	4
7	F07	1	5	5	4	4
8	F08	2	2	4	4	4
9	F09	5	5	5	2	4
10	F10	1	5	4	4	4

4. RESULT AND DISCUSSION

4.1. WP calculation

The first step in the WP method is to create a decision matrix, which is to make a weight for each criterion first. Then each criterion weight is normalized by calculating the number of criteria weights divided by the total number of criteria weights. Stages of the process of normalizing the calculation of the weight of the criteria using (3).

$$W_1 = \frac{3}{Total\ Weight} = \frac{3}{18} = 0.1667$$

$$W_2 = \frac{5}{Total\ Weight} = \frac{5}{18} = 0.2778$$

Normalization vector S is calculated based on the (4). Here one vector calculation S multiplying matrices decisions have been raised to the value of improvements weights. The above calculation obtained calculation results as shown in Table 8. The calculation above is carried out from V1 to V10 the results of the V vector values are obtained Table 9.

$$S_1 = (1^{0.1667}) \times (5^{0.2778}) \times (5^{0.2222}) \times (4^{0.1667}) \times (4^{0.1667}) = 3.5495$$

$$S_{20} = (1^{0.1667}) \times (5^{0.2778}) \times (5^{0.2222}) \times (4^{0.1667}) \times (4^{0.1667}) = 3.5495$$

$$V1 = \frac{3.5495}{3.5495+3.7976+2.618+3.5495+3.786+3.598+3.5495+2.9394+4.1351+...+3.549} = \frac{3.5495}{69.9976} = 0.0507$$

$$V2 = \frac{3.5495}{3.5495+3.7976+2.618+3.5495+3.786+3.598+3.5495+2.9394+4.1351+...+3.549} = \frac{3.7976}{69.9976} = 0.0542$$

Table 8. Vector s calculation results

Alternative	Value Vector S	Alternative	Value Vector S
S <sub>1</sub>	3.549537	S <sub>11</sub>	3.304859
S <sub>2</sub>	3.797696	S <sub>12</sub>	2.895613
S <sub>3</sub>	2.618769	S <sub>13</sub>	4.641589
S <sub>4</sub>	3.549537	S <sub>14</sub>	2.895613
S <sub>5</sub>	3.786479	S <sub>15</sub>	3.98422
S <sub>6</sub>	3.598552	S <sub>16</sub>	3.299442
S <sub>7</sub>	3.549537	S <sub>17</sub>	3.549537
S <sub>8</sub>	2.939469	S <sub>18</sub>	2.333058
S <sub>9</sub>	4.135186	S <sub>19</sub>	4.641589
S <sub>10</sub>	3.377817	S <sub>20</sub>	3.549537

Table 9. Vector v calculation results

Alternative	Value Vector V	Alternative	Value Vector V
V <sub>1</sub>	0.050709	V <sub>11</sub>	0.047214
V <sub>2</sub>	0.054255	V <sub>12</sub>	0.041367
V <sub>3</sub>	0.037412	V <sub>13</sub>	0.066311
V <sub>4</sub>	0.050709	V <sub>14</sub>	0.041367
V <sub>5</sub>	0.054094	V <sub>15</sub>	0.056919
V <sub>6</sub>	0.05141	V <sub>16</sub>	0.047136
V <sub>7</sub>	0.050709	V <sub>17</sub>	0.050709
V <sub>8</sub>	0.041994	V <sub>18</sub>	0.033331
V <sub>9</sub>	0.059076	V <sub>19</sub>	0.066311
V <sub>10</sub>	0.048256	V <sub>20</sub>	0.050709

4.2. SAW calculation

The final calculation is using the SAW method. The first step is to normalize the matrix first, by finding the max value in the column for each criterion. After obtaining the value from the normalization results, the calculation and ranking of alternative data is then carried out based on the results of the summation equation of the method. Figure 4 is the result of the matrix normalization calculation, which is then multiplied by the weight of each criterion using the SAW method. Multiplying the matrix with each criterion weight then adding up all the results per row so that the results are obtained that become a reference for recommendations for superior broodstock of carp, as shown in Table 10.

$$(0.2 \times 3) + (1 \times 5) + (1 \times 4) + (1 \times 3) + (1 \times 3) = 0.6 + 5 + 4 + 3 + 3 = 15.6$$

$$(0.6 \times 3) + (1 \times 5) + (1 \times 4) + (0.5 \times 3) + (1 \times 3) = 1.8 + 5 + 4 + 1.5 + 3 = 15.3$$

$$\begin{bmatrix} 1/5 & 5/5 & 5/5 & 4/4 & 4/4 \\ 3/5 & 5/5 & 5/5 & 2/4 & 4/4 \\ 1/5 & 2/5 & 4/5 & 4/4 & 4/4 \\ 1/5 & 5/5 & 5/5 & 4/4 & 4/4 \\ 5/5 & 5/5 & 2/5 & 4/4 & 4/4 \\ 5/5 & 2/5 & 5/5 & 4/4 & 4/4 \\ 1/5 & 5/5 & 5/5 & 4/4 & 4/4 \\ 2/5 & 2/5 & 4/5 & 4/4 & 4/4 \\ 5/5 & 5/5 & 5/5 & 2/4 & 4/4 \\ 1/5 & 5/5 & 4/5 & 4/4 & 4/4 \end{bmatrix} = \begin{pmatrix} 0.2 & 1 & 1 & 1 & 1 \\ 0.6 & 1 & 1 & 0.5 & 1 \\ 0.2 & 0.4 & 0.8 & 1 & 1 \\ 0.2 & 1 & 1 & 1 & 1 \\ 1 & 1 & 0.4 & 1 & 1 \\ 1 & 0.4 & 1 & 1 & 1 \\ 0.2 & 1 & 1 & 1 & 1 \\ 0.4 & 0.4 & 0.8 & 1 & 1 \\ 1 & 1 & 1 & 0.5 & 1 \\ 0.2 & 1 & 0.8 & 1 & 1 \end{pmatrix}$$

Figure 4. SAW normalization matrix

4.3. Research discussion

Research using the SAW method found that from 20 alternative data for carp, there were 4 data that did not match the results of the breeder's data. Alternatives that match the results of the farmer's data are 16 data, so the level of data accuracy is 16/20x100%=80%. Meanwhile, using the WP method from 20 alternative goldfish data, there are 2 data that do not match the results of the breeder's data. Alternative that match the results of the farmer's data are 18 data, so the data accuracy rate is 18/20x100%=90%. From the results of this study, the WP method is more accurate than the SAW method.

Table 10. SAW calculation results

Alternative	Value Vector V	Alternative	Value Vector V
V <sub>1</sub>	15.6	V <sub>11</sub>	13.8
V <sub>2</sub>	15.3	V <sub>12</sub>	13.2
V <sub>3</sub>	11.8	V <sub>13</sub>	18
V <sub>4</sub>	15.6	V <sub>14</sub>	13.2
V <sub>5</sub>	15.6	V <sub>15</sub>	16.2
V <sub>6</sub>	15	V <sub>16</sub>	13.6
V <sub>7</sub>	15.6	V <sub>17</sub>	15.6
V <sub>8</sub>	12.4	V <sub>18</sub>	10.3
V <sub>9</sub>	16.5	V <sub>19</sub>	18
V <sub>10</sub>	14.8	V <sub>20</sub>	15.6



## 5. CONCLUSION

Design and development of a DSS for the selection of Majalaya carp broodstock to seek alternative superior broodstock as a solution for fish cultivators. This system uses the WP method and the SAW method. Factors that influence the selection of superior broodstock are ideal body weight, fish movement, physical abnormalities, scale shape, and tail base shape. All of these assessment criteria are expected to assist in selecting superior Majalaya carp brooders. Of the 20 superior broodstock of Majalaya carp selected by the observers, there were 2 brood fish that did not comply with the WP method. If using the SAW method there are 4 brood fish that do not match the results of the breeder data. So it can be concluded that the WP method gets a better accuracy value of 90% compared to the SAW method which gets an accuracy value of 80%. This study also recommends that further research be conducted on a DSS that monitors and identifies what criteria affect the level of fish production, fish fertility and feed for Majalaya carp broodstock.

## ACKNOWLEDGEMENTS

This research is funded by the Engineering Faculty of Mulawarman University in 2022.




## REFERENCES

- [1] Ramadiani, R. Kurniawan, A. H. Kridalaksana, and M. L. Jundillah, "Decision support systems selection of soang superior brood using weighted product (WP) and simple additive weighting (SAW) method," *E3S Web of Conferences*, vol. 125, pp. 1–9, 2019, doi: 10.1051/e3sconf/201912523004.
- [2] P. Gonzalez-Alanis, K. Fitzsimmons, and R. Martinez-Garcia, "Why Tilapia is becoming the most important food fish on the planet," in *Proceedings of the Ninth International Symposium on Tilapia in Aquaculture*, 2011, no. April, pp. 8–16.
- [3] B. Kannan, A. Rathipriya, M. N. Meeran, and B. Ahilan, "Influence of different feed additives on the breeding performance of goldfish (*Carassius auratus*)," *International Journal of Current Microbiology and Applied Sciences*, vol. 7, no. 06, pp. 3142–3148, Jun. 2018, doi: 10.20546/ijemas.2018.706.369.
- [4] A. Mondal, P. Singh, M. Mondal, M. Singh, G. Tripathi, and G. S. Tripathi, "Comparative study of gold fish (*Carassius auratus*) breeding via induced and natural breeding," *International Journal of Chemical Studies*, vol. 6, no. 6, pp. 1940–1944, 2018, doi: 10.13140/RG.2.2.15956.04484.
- [5] P. JHA, "Management induced changes in pond water quality and growth performance of goldfish, *Carassius auratus* (L.), in two 11-week growth experiments conducted during the summer and the winter seasons," *AgroLife Scientific Journal*, vol. 9, no. 1, pp. 1172–1179, 2020.
- [6] S. M. Yeasmin, H. Rahman, A. Rahman, A. Al-Asif, A. Farid, and M. Billah, "Influence of feeding administration of brood-stock on breeding performance of common carp (*Cyprinus Carpio Linnaeus*, 1758)," *Journal of Aquaculture Engineering and Fisheries Research*, vol. 4, no. 3, pp. 127–137, 2018.
- [7] K. H. Dwiardani, L. A. Sari, P. D. W. Sari, D. D. Nindarwi, and S. Arsad, "The effect of feed larvae *Chironomus* sp. and high pellet protein to seedling goldfish (*Carassius auratus*)," *IOP Conference Series: Earth and Environmental Science*, vol. 441, no. 1, p. 12015, Feb. 2020, doi: 10.1088/1755-1315/441/1/012015.
- [8] L. Sipahutar, Y. Thanri, E. Syahrin, F. A. Putri, F. P. Nasution, and E. Desi, "Determining fish features decision support system (DSS) with oreste method," in *2021 9th International Conference on Cyber and IT Service Management (CITSM)*, Sep. 2021, pp. 1–4, doi: 10.1109/citsm52892.2021.9588975.
- [9] Á. Cobo, I. Llorente, L. Luna, and M. Luna, "A decision support system for fish farming using particle swarm optimization," *Computers and Electronics in Agriculture*, vol. 161, pp. 121–130, Jun. 2019, doi: 10.1016/j.compag.2018.03.036.
- [10] A. R. Dai, R. Tuiyo, and Syamsuddin, "Effective and efficient spawning techniques of Koi Goldfish," *The NIKE Journal*, vol. 8, no. 7, pp. 56–59, Sep. 2020.
- [11] S. Maharani, S. I. Persyadha, D. Cahyadi, and M. Mufadhol, "Weighted product method for selection of superior seeds catfish in the *clarias gariepinus* types (sangkuriang)," *E3S Web of Conferences*, vol. 125, pp. 8–11, 2019, doi: 10.1051/e3sconf/201912523008.
- [12] R. Ramadiani, B. Ramadhani, Z. Arifin, M. L. Jundillah, and A. Azainil, "Decision support system for determining chili land using weighted product method," *Bulletin of Electrical Engineering and Informatics*, vol. 9, no. 3, pp. 1229–1237, Jun. 2020, doi: 10.11591/eei.v9i3.2004.
- [13] D. W. T. Putra and A. A. Punggara, "Comparison analysis of simple additive weighting (SAW) and weighed product (WP) in decision support systems," *MATEC Web of Conferences*, vol. 215, p. 1003, Oct. 2018, doi: 10.1051/mateconf/201821501003.
- [14] Ramadiani, D. Marissa, M. L. Jundillah, Azainil, and H. R. Hatta, "Simple additive weighting to diagnose rabbit disease," *E3S Web of Conferences*, vol. 31, no. 10002, pp. 1–7, 2018, doi: 10.1051/e3sconf/20183110002.
- [15] C. A. Josaputri, E. Sugiharti, and R. Arifudin, "Decision support systems with AHP and SAW method for determination of cattle with superior seeds," *Scientific Journal of Informatics*, vol. 3, no. 2, pp. 119–128, Nov. 2016, doi: 10.15294/sji.v3i2.7908.
- [16] I. Irvanizam, "Multiple attribute decision making with simple additive weighting approach for selecting the scholarship recipients at Syiah Kuala university," in *2017 International Conference on Electrical Engineering and Informatics (ICELETTICS)*, Oct. 2017, pp. 245–250, doi: 10.1109/icelettics.2017.8253272.
- [17] D. Y. H. Tanjung and R. Adawiyah, "Optimizing selection of decision support system with fuzzy simple additive weighting," in *2018 6th International Conference on Cyber and IT Service Management (CITSM)*, Aug. 2018, pp. 1–4, doi: 10.1109/citsm.2018.8674360.
- [18] P. I. Ciptayani, N. G. A. P. H. Saptarini, P. A. W. Santiyari, and I. N. G. A. Astawa, "Decision support system for tourist destination using the combination of AHP and SAW," in *2018 2nd East Indonesia Conference on Computer and Information Technology (EIConCIT)*, Nov. 2018, pp. 271–275, doi: 10.1109/eiconcit.2018.8878638.
- [19] E. Boltürk, A. Karaçsan, and C. Kahraman, "Simple additive weighting and weighted product methods using neutrosophic sets," in *Fuzzy Multi-criteria Decision-Making Using Neutrosophic Sets*, Springer International Publishing, 2018, pp. 647–676.
- [20] I. Ramadhan and U. Zaky, "Method comparison analysis simple additive weighting (SAW) with weighted product (WP) method in




- supporting the decision to accept new employees." *International Journal of Engineering Technology and Natural Sciences*, vol. 2, no. 1, pp. 11–17, 2020, doi: 10.46923/ijets.v2i1.66.
- [21] A. Setyawan, F. Y. Arini, and I. Akhlis, "Comparative analysis of simple additive weighting method and weighted product method to new employee recruitment decision support system (DSS) at PT. Warta Media Nusantara," *Scientific Journal of Informatics*, vol. 4, no. 1, pp. 34–42, May 2017, doi: 10.15294/sji.v4i1.8458.
- [22] W. Hadikurniawati, E. Winamo, T. D. Cahyono, and D. Abdullah, "Comparison of AHP-TOPSIS hybrid methods, WP and SAW for multi-attribute decision-making to select the best electrical expert," *IOP Conference Series: Journal of Physics: Conference Series*, vol. 1114, p. 12100, Nov. 2018, doi: 10.1088/1742-6596/1114/1/012100.
- [23] R. Simanaviciene and L. Ustinovichius, "Sensitivity analysis for multiple criteria decision-making methods: TOPSIS and SAW," *Procedia - Social and Behavioral Sciences*, vol. 2, no. 6, pp. 7743–7744, 2010, doi: 10.1016/j.sbspro.2010.05.207.
- [24] M. M. Islam, M. A. Kashem, and J. Uddin, "Fish survival prediction in an aquatic environment using random forest model," *IAES International Journal of Artificial Intelligence (IJ-AI)*, vol. 10, no. 3, pp. 614–622, Sep. 2021, doi: 10.11591/ijai.v10.i3.pp614-622.
- [25] M. Mardison, A. Ramadhani, L. N. Rani, and S. Enggari, "Hybrid DSS for recommendations of halal culinary tourism West Sumatra," *IAES International Journal of Artificial Intelligence (IJ-AI)*, vol. 10, no. 2, pp. 273–283, Jun. 2021, doi: 10.11591/ijai.v10.i2.pp273-283.
- [26] R. Ramadani and R. Kurniawan, "Application of technique for order preference method by similarity to ideal solution (TOPSIS) priority of KORPRI housing recipient," *International Journal of Engineering, Information Science and Applied Sciences (IJEIS-AS)*, vol. 1, no. 1, pp. 1–8, 2018.
- [27] Ramadani, M. S. Ramadhani, M. L. Jundillah, and Azainil, "Rubber plant disease diagnostic system using technique for order preference by similarity to ideal solution," *Procedia Computer Science*, vol. 161, pp. 484–492, 2019, doi: 10.1016/j.procs.2019.11.148.
- [28] Ramadani, N. Aini, H. R. Hatta, F. Agus, Z. Ariffin, and Azainil, "Certain factor analysis for extra pulmonary tuberculosis diagnosis," in *2017 4th International Conference on Electrical Engineering, Computer Science and Informatics (EECSI)*, Sep. 2017, pp. 138–144, doi: 10.1109/eeesi.2017.8239098.
- [29] F. Ciccozzi, I. Malavolta, and B. Selic, "Execution of UML models: a systematic review of research and practice," *Software and Systems Modeling*, vol. 18, no. 3, pp. 2313–2360, 2019, doi: 10.1007/s10270-018-0675-4.
- [30] K. El-Nemr Moataz, M. El Nemr, and S. Abozاهر, "Decision support system for fish ponds mechanical aeration management," *International Agricultural Engineering Journal*, vol. 21, no. 3–4, pp. 41–52, 2012.

## BIOGRAPHIES OF AUTHORS



**Ramadani Ramadani**    Obtained her Ph.D in Information System from Universiti Putra Malaysia (UPM) in 2015. She received her first degree from Mulawarman University (1996), her M.Kom. in Computer Science from Gadjah Mada University (2006). Ramadani currently works at the Department of Computer Science, Universitas Mulawarman. Ramadani does research in Software Engineering, system control, expert system, Information Systems, Human-computer interaction, e-Learning and Decision Support System. She can be contacted at email: [ilkom.ramadani@gmail.com](mailto:ilkom.ramadani@gmail.com).



**Surya Adithama**    He got the S.Kom degree in Informatics at Mulawarman University, Samarinda, Indonesia in 2020. He has been a student of Informatics Study Program, Engineering Faculty, Mulawarman University, since 2017. His current research interests include decision support system and its applications such as in web systems and method comparison. He can be contacted at email: [suryaadithama1@gmail.com](mailto:suryaadithama1@gmail.com).



**Muhammad Labib Jundillah**    Received his M.Kom degree in Information System (2019) from Diponegoro University Semarang Indonesia. He obtained his S.Kom from Mulawarman University (2017) Samarinda. His research interests area in Information System, Decision Support System, Software Engineering and User Satisfaction. He can be contacted at email: [labibjundillah@gmail.com](mailto:labibjundillah@gmail.com).

# Selecting goldfish broods use the weighted product and simple

## ORIGINALITY REPORT

12%

SIMILARITY INDEX

9%

INTERNET SOURCES

10%

PUBLICATIONS

3%

STUDENT PAPERS

## PRIMARY SOURCES

1 Submitted to Universitas Negeri Surabaya 1%  
Student Paper

2 eprints.whiterose.ac.uk 1%  
Internet Source

3 Fitri Utamingrum, A.W. Satria Bahari Johan, I. Komang Somawirata, Risnandar, Anindita Septiarini. "Descending stairs and floors classification as control reference in autonomous smart wheelchair", Journal of King Saud University - Computer and Information Sciences, 2021 1%  
Publication

4 Wiwien Hadikurniawati, Edy Winarno, Taufiq Dwi Cahyono, Dahlan Abdullah. "Comparison of AHP-TOPSIS Hybrid Methods, WP and SAW for Multi-Attribute Decision-Making to Select The Best Electrical Expert", Journal of Physics: Conference Series, 2018 1%  
Publication

5	Internet Source	1 %
6	<a href="http://jurnal.unimed.ac.id">jurnal.unimed.ac.id</a> Internet Source	1 %
7	<a href="http://ejournals.umn.ac.id">ejournals.umn.ac.id</a> Internet Source	<1 %
8	<a href="http://ia801409.us.archive.org">ia801409.us.archive.org</a> Internet Source	<1 %
9	Amesanggeng Pataropura, Riki Riki, Joshua Geraldo Manu. "Decision Support System for Selection of Assembly Using Profile Matching Method and Simple Additive Weighting Method (Case Study: GKIN Diaspora Church)", bit-Tech, 2019 Publication	<1 %
10	Satria Abadi, Fitriyani. "Detected The Sex Of Fish That Is Good For Cultivation Using Fuzzy", bit-Tech, 2022 Publication	<1 %
11	Sofika Enggari, Larissa Navia Rani, Hari Marfalino, Deri Marse Putra. "Prediction System of Facility Maintenance using Weight Product (WP) Algorithm", Journal of Physics: Conference Series, 2021 Publication	<1 %
12	<a href="http://jurnal.buddhidharma.ac.id">jurnal.buddhidharma.ac.id</a> Internet Source	<1 %

- 
- 13 [journal.mediapublikasi.id](http://journal.mediapublikasi.id) Internet Source <1 %
- 
- 14 [repository.unwira.ac.id](http://repository.unwira.ac.id) Internet Source <1 %
- 
- 15 Samuel Van Basten Manurung, Fati Gratianus Nafiri Larosa, Indra M. Sarkis Simamora, Asaziduhu Gea et al. "Decision Support System of Best Teacher Selection using Method MOORA and SAW", 2019 International Conference of Computer Science and Information Technology (ICoSNIKOM), 2019 Publication <1 %
- 
- 16 [www.mecs-press.org](http://www.mecs-press.org) Internet Source <1 %
- 
- 17 [journal.universitاسbumigora.ac.id](http://journal.universitاسbumigora.ac.id) Internet Source <1 %
- 
- 18 [journal.unnes.ac.id](http://journal.unnes.ac.id) Internet Source <1 %
- 
- 19 Melvin, Tri Sutrisno, Dyah Erny Herwindiati. "Decision Support System for Election and Evaluation of Assistant Lecturer Using Analytical Hierarchy Process and Simple Additive Weighting: case study Faculty of Information Technology Tarumanagara <1 %

University", IOP Conference Series: Materials  
Science and Engineering, 2020

Publication

20

[ijistech.org](http://ijistech.org)

Internet Source

<1 %

21

[media.neliti.com](http://media.neliti.com)

Internet Source

<1 %

22

[shmpublisher.com](http://shmpublisher.com)

Internet Source

<1 %

23

[s3-ap-southeast-1.amazonaws.com](http://s3-ap-southeast-1.amazonaws.com)

Internet Source

<1 %

24

Helmi Kurniawan, Ashari P Swondo, Eka Purnama Sari, Khairul Ummi, Muhammad Rusdi Tanjung, Yusfrizal. "Analysis and Comparative Between Profile Matching and SAW Method in Decision Support", 2020 8th International Conference on Cyber and IT Service Management (CITSM), 2020

Publication

<1 %

25

Lahmudin Sipahutar, Yanyang Thanri, Evin Syahrin, Fetty Ade Putri, Fitri Pranita Nasution, Efani Desi. "Determining Fish Features Decision Support System (DSS) with Oreste Method", 2021 9th International Conference on Cyber and IT Service Management (CITSM), 2021

Publication

<1 %

26

Rosma Siregar, Muhammad Zarlis, Zakarias Situmorang. "Tsukamoto's Fuzzy Logic Development Analysis to Predict Caesarean or Normal Delivery", 2020 3rd International Conference on Mechanical, Electronics, Computer, and Industrial Technology (MECnIT), 2020

Publication

&lt;1 %

27

Sisilia Rivanda Arianto, Fendi Aprian Syah, Luthfiana Aprilianita Sari, Ayu Lana Nafisyah, Sulastri Arsad, Nadirah Musa. "Analyze the toxicities of benzalkonium chloride as a COVID-19 disinfectant in physiological goldfish (*Carassius auratus*)", Veterinary World, 2023

Publication

&lt;1 %

28

[ojs.unud.ac.id](https://ojs.unud.ac.id)

Internet Source

&lt;1 %

29

Zhou, P.. "Comparing aggregating methods for constructing the composite environmental index: An objective measure", Ecological Economics, 20060920

Publication

&lt;1 %

30

Intan Indri Fitriyani, Nur Ngaenun Agustina, Alya Nur Fajarianti. "Weighted Product Implementation In Selection of Superior Jersey Materials in Gorich Industry and

&lt;1 %

# Production", Internet of Things and Artificial Intelligence Journal, 2023

Publication

---

---

Exclude quotes      On

Exclude matches      Off

Exclude bibliography      On