



Online Submission - Login

Email Address*

Password*

[Back to HRPUB Home](#) .

Not registered ? [Register here](#) .

Forgot Password ? please send email to editor@hrpub.org for resetting password with Login Email Address .

Submit New Manuscripts

Select a Journal*

Universal Journal of Agricultural Research

Manuscript Title*

Effect of Soil Damage on Carrying Capacity of Biomass Production: An Lessons from Tanjung Selor Distri

Abstract*

Currently, land use is considered intensive for various purposes that affect the soil as the main series of land and the environment. The other side of the soil in Kalimantan is naturally formed from material that is poor in nutrients so it is not fertile and acidic. This study attempted to evaluate the status of soil damage to the carrying capacity for biomass production in Tanjung Selor District (Bulungan Regency, North Kalimantan Province). The overlay analysis of land slope, rainfall, soil type and land cover in the form of a map produces indicative areas of low, medium and high damage. High damage indicative areas were selected for verification, observation and soil sampling to obtain soil damage parameter

Keywords*

land use, soil damage status, biomass production, carrying capacity

Manuscript File (Note :: The following file type are accepted : doc , docx , tex; file size:no more than 5M)*

/cdocs/UJAR-10429065-20220830-073012.doc

Upload a file

HRPUB_Manu_Template_V1.doc 0.6MB

Page Count

5189

Page Count is invalid .

Submit

Cancel

Submit Manuscript

My Manuscripts

View / Edit Profile

Change Password

Logout

Effect of Soil Damage on Carrying Capacity of Biomass Production: An Lessons from Tanjung Selor District – Tanjung Redeb, Indonesia

Surya Darma*, Fahrunsyah Fahrunsyah

Department of Agroecotechnology, Faculty of Agriculture, Universitas Mulawarman, Samarinda, 75119, East Kalimantan, Indonesia

*Corresponding Author: surya_darma@faperta.unmul.ac.id

Abstract Currently, land use is considered intensive for various purposes that affect the soil as the main series of land and the environment. The other side of the soil in Kalimantan is naturally formed from material that is poor in nutrients so it is not fertile and acidic. This study attempted to evaluate the status of soil damage to the carrying capacity for biomass production in Tanjung Selor District. The overlay analysis of land slope, rainfall, soil type and land cover in the form of a map produces indicative areas of low, medium and high damage. High damage indicative areas were selected for verification, observation and soil sampling to obtain soil damage parameter data, carried out in March 2020. Analysis of the relative frequency score of the damaged parameters to determine the status of carrying capacity and soil damage. The results of the study based on 10 soil damage parameters obtained a score of 6 with the status of lightly damaged soil damage, the main factor being soil acidity (R.I-a) with a high carrying capacity of 1,684 ha. The acidity factor with a pH of <4.5 (very acidic) has the most effect, 80% is damaged, but is relatively easy to repair. Efforts to improve cultivated plants that are stressed by soil acidity by using soil amendments to raise the pH above the minimum range that is more suitable to increase biomass production and carrying capacity, namely agricultural lime and compost followed by N, P and K fertilization as needed.

Keywords Land Use, Soil Damage Status, Biomass Production, Carrying Capacity

diverse and wider without considering the carrying capacity can cause soil damage which reduces the production of plant biomass on it. In the context of the environment, carrying capacity is articulated as a harmonization that supports the life of living things fundamentally for the long term, especially humans [1].

Soils in Kalimantan are formed from repetitive, nutrient-poor residual parent material such as sandstone. Nutrients that come out are not replaced or replaced but the amount and type are not balanced and for a long time, so that the quality of the soil is reduced or damaged which reduces its carrying capacity for biomass production [2-3]. Another factor is the high rainfall and lasts most of the year with a long period of time and this indicates that alkaline metal nutrient loads are leached to the lower layers and some are carried away by groundwater into water bodies with the consequence that the soil is relatively poor in nutrients and acidic.

As for the motivation and objectivity of this article to understand the status of soil damage to the carrying capacity for biomass production in Tanjung Selor District to the author's knowledge, this paper is one of the premises that using more holistic procedures and techniques than other publications. A study that relates soil damage to carrying capacity based on indicative soil damage parameters. Production of green plant biomass in the form of fruit, tubers, leaves, shoots, stems, skins, flowers, oil as the main food chain on land and life support material. High biomass production can be achieved if the soil of the growing medium is good, otherwise if the soil is damaged. This may be of interest to stakeholders, particularly policy makers.

1. Introduction

Land use for various activities and purposes is increasing and even intensive, so that it affects the quantity and quality of the land component, namely the lithosphere. Lithosphere is part of the outer shell of the earth consisting of rocks and soil that supports life on it, among others, to produce biomass. As a component of land and the environment, the use of land that is more

2. Materials and Methods

2.1. List of Equipments

Operationally, the main research equipment or item consists of soil samples and thematic maps. The maps in question are the 2012–2032 Bulungan Regency Spatial Plan [4], soil type maps [5], Indonesian topographic maps

1918-42 and 1918-44 [6], Digital Elevation Model (DEM) maps [7], rainfall [8] and land cover map [9] categorization refers to Indonesian National Standard (SNI) No.: 7645-1:2014 [10]. All them are digital-based to support mapping mechanisms and operations. Soil sampling is focused on strategic locations, where observations of high soil damage potential refer to thematic maps accurately. Field activities are equipped with GPS, soil drill, double ring, clinometer, plastic bag and machete. Laboratory equipment and chemicals for soil testing. Then, soil samples identified in the laboratory include: soil biology (bacteria and fungi), chemical properties (pH, DHL, and Redox), and physical properties (fraction composition, specific gravity, and total pores) at the Soil Laboratory at the Faculty of Agriculture – Universitas Mulawarman.

2.2. Indicators

The concentration of areas that become effective work areas are cultivation areas [4] which so far have become prospects for expansion of biomass production, such as horticultural cultivation areas, agricultural and plantation areas, and permanent production and limited production forest areas. Meanwhile, other cultivation areas such as settlements, protected areas, fisheries, and others are not included in the effective areas [11-14].

2.3. Indicative Land Damage

The requirements for measuring indicative damage are based on 4 parameters that are weighted based on their strong influence on soil damage, i.e. slope (%) and rainfall (mm.th⁻¹) weight 3, soil type (*Ordo*) and land cover weight 2, total weight 10 [15-17]. Each vital parameter is rated according to its potential damage. The ratings for each parameter are: Slope 1 (1-8%), 2 (9-15%), 3 (16-25%), 4 (26-40%), and 5 (>40%). rainfall 5 (> 4000), 4 (3000-4000), 3 (2000-3000), 2 (1000-2000), and 1 (<1000). Soil 1 (*Vertisols Aquic moisture regime*), 2 (*Oxisols*), 3 (*Mollisols, Ultisols*), 4 (*Inceptisols, Entisols, Histosols*), and 5 (*Andisols, Spodosols*). Land cover related to crop coefficient includes 1–Natural forest, rice fields, pure fertile along-alang; 2–Mixed gardens, shrubs, meadows; 3–Production forests, cultivation; 4–Perennials; and 5–Open land [18]. This land cover will be equivalent to the land cover of SNI: 7645-1:2014 found at the activity site [10]. Each weight multiplied by the rating yields a specific score [19-23].

2.4. Map Overlay

The next step is the treatment of overlapping operations with ArcGis version 10.2 on slope maps, rainfall maps, soil types maps and land cover maps [24-25]. Sudaryatno [26], Hernando & Romana [27], and Roesch *et al.* [28]

popularized the most important parts obtaining total scores (smallest 10) and (largest 50). The entire map area is only in the effective working area. It should be noted that the total score is classified according to the assumption of indicative soil damage potential into 5 classes (*Table 1*). These results provide a spatial sign of potential soil damage as a guide for field verification.

Table 1. Indicative soil damage potential

Groups	Score
“Very high”	≤45–50
“High”	≤35–44
“Moderate”	≤25–34
“Low”	≤15–24
“Very low”	<15

Source: adopted from Siahaan [29]

2.5. Field Verification

Furthermore, field verification only focuses on locations of high indicative soil damage potential to prove the truth of the potential damage [30]. When in the field, the independent system soil observations at 10 representative sites of the dimensions of solum thickness, surface rock, degree of water release, and taking soil samples at a depth of 0–20 cm for laboratory review [31-33].

2.6. Categorization of Land Damage Status

Finally, compile the status of soil damage using the relative frequency scoring method with the provisions of the comparison of the number of soil samples based on the parameters of the laboratory analysis results classified as damaged (%) to all soil samples.

Other parameters observed directly in the field were classified as damaged (%) against all observations of the same parameters in the field (see *Table 2*). The types of parameters and their assessments refer to *Table 4*, the parameters are declared damaged if they are outside the threshold. The maximum accumulated score is 40 if all or 10 parameters (*Table 4*) are damaged, then divided into 5 classes (*Table 3*).

Each parameter that has been scored is then added up, from that number the soil damage status (dry land) is categorized as represented by *Table 3*.

Table 4 interprets the criteria for dry land soil damage referring to 10 parameters and each with a threshold. Each field observation sample and the observed soil sample have 10 parameters, the results are compared to determine the parameter that is damaged if the value is outside the threshold.

Table 2. Relative frequency ground damage score

Frequency (%)	Score	Measures	Carrying capacity
0 – 11	0	“Not damaged”	“Very high”
11 – 25	1	“Slightly damaged”	“High”
26 – 50	2	“Medium”	“Moderate”
51 – 75	3	“Heavily damaged”	“Low”
76 – 100	4	“Very heavily damaged”	“Very low”

Source: Darma *et al.* [34]

Table 3. Relationship of accumulated score to soil damage

Symbol	Accumulated score	Status	Carrying capacity
R.IV	35–40	“Very heavily damaged”	“Very low”
R.III	25–34	“Heavily damaged”	“Low”
R.II	15–24	“Medium”	“Moderate”
R.I	1–14	“Slightly damaged”	“High”
N	0	“Not damaged”	“Very high”

Source: compilation from Syahidah [35]

Table 4. Dry land soil damage criteria

Parameters	Symbol	Levels
pH (H ₂ O) --> 1:2.5	a	<4.5 or >8.5
Surface rock	b	> 40%
Filling weight	d	> 1.4 g.cm ⁻³
Electrical conductivity/DHL	e	> 4.0 mS.cm ⁻¹
Composition of colloidal clay and sand fraction	f	<18% clay colloid or >80% tick quartz sand
Number of microbes	m	<10 ² cfu.g ⁻¹ soil
Degree of water pass	p	<0.7 cm.hour ⁻¹ or >8 cm.hour ⁻¹
Redox	r	<200 mV
Solum thickness	s	<20 cm
Solum thickness	s	<20 cm

Source: Qurrahman *et al.* [36] dan Sumarno *et al.* [37]

3. Results and Discussion

3.1. Parameter of Scores Each

After reviewing the slope class, there were scores of 3 (1-8%), 6 (9-15%), 9 (16-25%), 12 (26-40%), rainfall scores 9 (2000-3000). Soil type with a score of 6 (*Ultisols* and *Alfisols*), and 8 (*Inceptisols* and *Entisols*). Land cover from SNI: 7645-1:2014 [10] found 10 equalized classes, where a score of 2 (natural forest, rice fields, pure fertile reeds) was equal to dry land forest, ponds, secondary swamp forest swamp scrub, and secondary mangrove

forest. Then, a score of 4 (mixed gardens, shrubs, grasslands) is equal to plantations, a score of 6 (production forest, cultivation), is equal to dryland agriculture, shrubs/shrubs, a score of 8 (seasonal crops) is equal to dryland annual crops, and a score of 10 for open ground.

3.2. Exploration with Overlays

The effective work area in Tanjung Selor Regency supports the designation of a cultivation area with a 39,800 ha. The overlay of the slope map, rainfall map, soil

type map, and land cover map obtained a total score between 20–42 which indicates that the potential for soil damage is indicative of low, medium, to high (see *Table 5*).

High indicative soil damage potential is designated as a location for field verification for evaluation and proof of the actual land damage status. The verification point was chosen with consideration of the ease of accessibility and representativeness of the location.

Table 5. Findings on soil damage are indicative

Potential damage	Area (ha)
Low	7,735
Moderate	30,381
High	1,684
Total	39,800

Source: elaboration of Authors

3.3. Overview Attributes

The results of the verification which focused on high

Table 6. Soil damage assessment based on relative frequency score

Parameters (symbol)	Components		Soil observations and samples			
	Value	Unit	I	II	III	IV
Solum thickness(s)	< 20	cm	>90	60–90	60–90	>90
Surface rock (b)	> 40	%	<10	45*	<10	<10
Composition of sand fraction (f)	< 18	% clay	36.7	40.3	12.57*	42.26
	> 80	% sand	48.7	30.8	73.3	16.86
Filling weight (d)	>1.4	g.cm ⁻³	1.30	1.42*	1.32	1.34
Total porosity (v)	< 30; >70	%	47	43	53.12	42.3
Degree of water release (p)	< 0.7; >8	cm.hour ⁻¹	0.71	0.55*	7.15	1.02
pH (H ₂ O) --> 1:2.5	< 4.5; >8,5	-	4.4*	4.3*	4.10*	4.2*
Electrical conductivity (e)	> 4	mS.cm ⁻¹	1.87	1.34	2.26	1.97
Redox(r)	< 200	mV	247	200	235	241
Number of microbes (m)	<10 ²	cfu.g ⁻¹ soil	2.2 x 10 ⁴	1.9 x 10 ⁴	2.1 x 10 ⁴	2.1 x 10 ⁴

Table 6. Continued

Soil observations and samples						Σ damaged	Relative frequency of damaged soil (%)	Score
V	VI	VII	VIII	IX	X			
>90	>90	>90	>90	>90	60-90	0	0/10 x 100 = 0	0
>10	<10	<10	<10	<10	45*	2	2/10 x 100 = 20	1
29.9	23.1	32	61.2	53.7	17.2*	2	2/10 x 100 = 20	1
52.8	55.9	45.26	39	46.3	72.9	0	0/10 x 100 = 0	0
1.28	1.22	1.28	1.28	1.3	1.26	1	1/10 x 100 = 10	0

indicative damage areas were carried out in early March 2020, observations were made of 10 locations as representatives, it was found that the soil solum depth for all sample points was >60 cm, slopes 15%–40%, there was a small part of slopes >40%, but only to the extent of inclusion. Interestingly, there are surface rocks with a size of about 2 mm–7.5 cm, but the determination is between 2 mm–1 cm, thus it is classified as gravel. Gravel on the surface and cross section of the soil, to a depth of >40cm with a general distribution of <10%, but two locations ± 45%. Soil permeability is between 0.55–10.40cm.hour⁻¹. At each observation location, soil samples were taken for laboratory analysis.

3.4. Soil Damage Assessment

Table 6 summarizes the field verification study and the soil analysis. The soil damage parameters are outside the threshold and the parameters are within the threshold. The data collected refers to observations and selection in the field, laboratory studies and analysis of soil damage status, it is concluded that the accumulated score is 6.

56.41	52.57	53.66	50.08	40.43	56.32	0	0/10 x 100 = 0	0
3.06	10.40	3.36	6.32	4.99	7.64	1	1/10 x 100 = 10	0
4.30*	5.84	4.81	4.13*	4.42*	4.33*	8	8/10 x 100 = 80	4
3.35	4.05*	3.05	2.83	3.47	1.95	1	0/10 x 100 = 10	0
213	225	231	275	232	284	0	0/10 x 100 = 0	0
1.8 x 10 ⁴	1.7 x 10 ⁴	2.2 x 10 ⁴	1.8 x 10 ⁴	2.2 x 10 ⁴	1.9 x 10 ⁴	0	0/10 x 100 = 0	0
Accumulated score								6

Source: elaboration of Authors. Remark: *) Beyond critical threshold

Table 6 also explains the accumulated score of soil damage status, which is lightly damaged (R.I) or high carrying capacity with an area of 5,604 ha, originally indicated with high damage potential. The factors causing the soil damage status that affect the status of the soil consist of three main classifications, namely surface rock, clay fraction composition (f), and pH or soil acidity. From this aspect, the pH factor is the largest (80%) outside the threshold, the surface rocks, and the composition of the clay fraction is only 20%. But, the density and degree of water release are only 10% or one point of observation. The dominant soil acidity is below the threshold (<4.5) with a very acidic status.

The main soil group (*Ordo*) in the overall study area that is dominant is *Ultisols* or *Podsolik* with an area of 29,329 ha or 73.70% in the effective area [38-39]. Soil acidity of *Ultisols* in Kalimantan with a pH of 4.22-4.77 is classified as very acidic [40-42]. The damage status of lightly damaged soil which was originally indicated as having high damage potential can give the same picture that the indication of low and moderate damage is the main factor is pH, especially those found in the same soil type (*Ultisols*) so that it is classified as lightly damaged.

The status of soil damage with the main limiting pH is very acidic (R.I-a), but the soil still functions well as a natural medium for natural vegetation to grow. Yet, land use for cultivation that produces biomass must be regulated, and maintained so that biomass production remains good [43]. The existing vegetation has adapted to the soil conditions where it grows in a long period [44]. This vegetation can produce biomass in the form of stems, leaves, flowers, fruits, tubers, sap, bark, roots and oils that support animal life and human dependence in the vicinity.

Table 7. Variety of cultivated plants and their tolerance to minimum soil pH

Plant type	Minimum pH
<i>Foods:</i>	
- Local/upland rice fields	4 ¹) – <5 ³)
- Cassava	4 ¹) – <4.8 ³)
- Sweet potatoes	4 ¹) – <4.8 ³)
- Corn	4 ¹) – <5 ³)
- Taro	4 ¹) – <5 ³)
<i>Plantations:</i>	
- Coconut	4 ¹) – <4.8 ³)
- Palm oil	3.5 ²) – <4.2 ³)
- Rubber	3.5 ²) – <4 ³)
- Cocoa	4 ¹) – <5.5 ³)
- Robusta coffee	4 ¹) – <5.3 ³)
<i>Vegetables:</i>	
- Beans	4 ¹) – <5 ³)
- Eggplant	4 ¹) – <4.8 ³)
- Cucumber	4 ¹) – <4.8 ³)
- Chilli	4 ¹) – <5 ³)
- Petai	4 ¹) – <5 ³)
<i>Fruits:</i>	
- Durian	4 ¹) – <5 ³)
- Banana	4 ¹) – <5.2 ³)
- Papaya	4 ¹) – <5.5 ³)
- Cempedak/Nangka	4 ¹) – <4.5 ³)
- Rambutan	4 ¹) – <4.5 ³)

Notes: ¹) Rounding off the lowest soil pH at the activity site, ²) Observations of the authors at several locations in North Kalimantan, and ³) adopted from Ritung *et al.* [45]

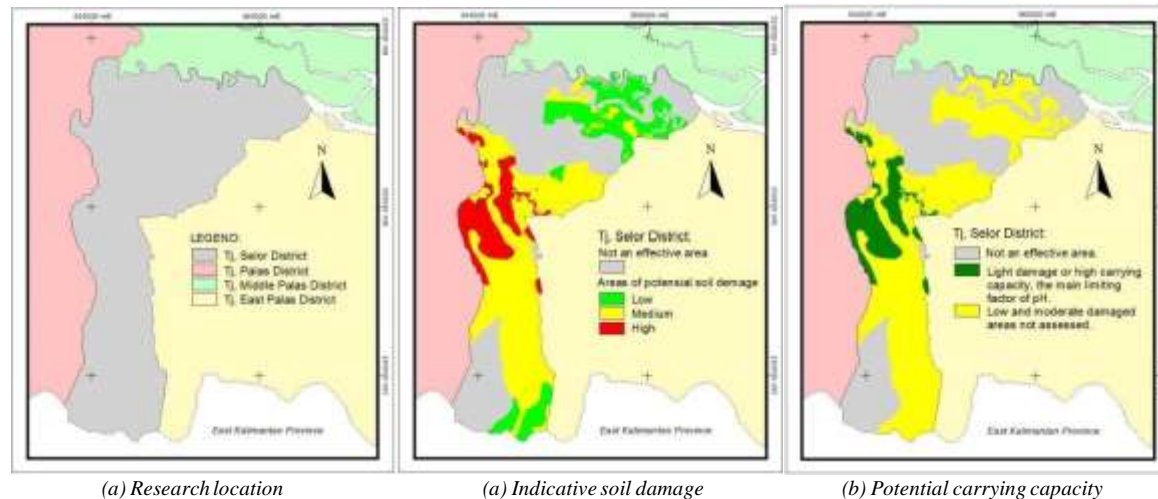


Figure 1. Map of study stage

The variety of vegetation needed by humans, such as food-producing plants, horticulture, secondary crops, vegetables, and plantation crops, most of which are not native plants. This is caused by cultivation activities that allow the process of adaptation to their environment. Although growing, these plants require certain requirements to provide good results to the greatest. Observing *Table 7*, plant varieties can produce and grow well in the least soil pH interval, although not optimally [46-47]. Parameters of very acidic soil damage have an explicit impact on the carrying capacity of production yields for a case study of several cultivated plants. Soil pH factors, which are very acidic (<4.5) with dominant (80%) in the study area, must be considered for the suitability of the variety of plants that will be and have been developed (see *Figure 1*).

The act of providing soil amendments to increase soil pH, including within a range that is more suitable for the type of plant and compost [48-51]. In terms of soil amendments, agricultural lime is very suitable for reducing soil acidity or increasing soil pH in encouraging better alignment of plant guidance ranges (above the minimum). Compost is also applicable to increase soil fertility (physical, chemical, and biological) and maintain soil pH stability. Also to soil improvement, extra fertilizer containing N, P and K elements is also good and important to give to plants to increase nutrient availability so that optimal biomass production implies increasing carrying capacity [52]. Very acidic soils are followed by very low to low macronutrient deficiencies [53-55].

Other studies examining the effect of biomass production on soil degradation are discussed. Case study in the Idaho forest in Washington, watershed degradation leads to expansive human use of biomass [56]. Uncontrolled biomass production practices in the eastern part of Natuna Regency, for example, degraded soil quality and function are triggered by development routines [57]. There is similar literature, but different research outputs are also shown by Frasetya *et al.* [58].

The use of land for production forests and explorative agriculture has an impact on land degradation in Subang in West Java (Indonesia). Collectively, Pimentel & Burgess [59] argue that world food production is currently the most concrete threat with implications for soil erosion on agricultural land. Humanity will experience hunger as a result of the food security crisis. Yang *et al.* [60] confirmed that drastic environmental changes actually disrupt the stability of plant biomass productivity. By ignoring soil biodiversity, temporal biomass production cannot respond to plant functional groups. Eisenhauer *et al.* [61] found that there is a positive correlation between plant biomass production and sustainable decomposer diversity.

4. Conclusions

The orientation of this research is to explore the relationship between soil damage and the carrying capacity of biomass production from Tanjung Selor District in Bulungan Regency (North Kalimantan Province). Initial analysis of the 4 main parameters of the output indicated high soil damage as a reference for field verification. However, further analysis shows that the soil damage status is lightly damaged (R.I-a) with the main limiting factor being very acidic soil acidity. Thus, the carrying capacity of the soil for biomass production is still high. For cultivated plants, it is necessary to provide soil amendments (captan and compost) to reduce the main limiting effect to increase production capacity massively. Additionally, N, P and K fertilizers need to be given to increase soil fertility so that biomass production and carrying capacity are optimal.

Theoretical contributions and practical implications are developed to assist practitioners and researchers in considering the carrying capacity of biomass production and soil degradation. The limitations and directions of future studies are discussed for a more exclusive

generalization of these findings and new research flows in the field.

REFERENCES

- 1 R.M. Subekti., D.S.A. Suroso. Ecological footprint and ecosystem services models: A comparative analysis of environmental carrying capacity calculation approach in Indonesia, Paper presented in the 1st ITB Centennial and 4th Plano Cosmo International Conference 3–5 April 2018, Bandung, Indonesia, IOP Conference Series: Earth and Environmental Science, 158: 012026, 2018.
- 2 S. Darma. Land Suitability of Rice Fields in Bumi Rapak Village and Selangkau Village East Kutai Regency, *Jurnal Ilmu Tanah Dan Lingkungan*, Vol. 24, No. 1, 32-38, 2022.
- 3 F. Fahrunsyah., M. Mulyadi., A. Sarjono., S. Darma. Peningkatan efisiensi pemupukan fosfor pada ultisol dengan menggunakan abu terbang batubara (Increasing the efficiency of phosphorus fertilization on ultisols using coal fly ash), *Jurnal Tanah dan Sumber Daya Alam*. Vol. 8, No. 1, 189-202, 2020.
- 4 Regional Development Planning Agency of Bulungan Regency. Peta administrasi Kabupaten Bulungan. Rencana Tata Ruang Wilayah 2021-2041 (Map of Bulungan Regency administration. Regional Spatial Plan 2021-2041), 2021. Online available from <https://tataruang.atrbpn.go.id/protaru/upload/RtrwT52/Perda%20RTRW%20Kab%20Bulungan%202021-2041.pdf>.
- 5 Center for Research and Development of Agricultural Land Resources of Indonesia. Peta tanah semi detail (Semi-detailed land map), 2016. Online available from <https://bbsdlp.litbang.pertanian.go.id>.
- 6 Geospatial Information Agency of Indonesia. Peta Rupa Bumi Indonesia: Lembar 1918-42 dan Lembar 1918-44 (Indonesian Geographical Map: Sheet 1918-42 and Sheet 1918-44), 2019a. Online available from <https://tanahair.indonesia.go.id>.
- 7 Geospatial Information Agency of Indonesia. Peta Digital Elevation Model (DEM) Nasional (National Digital Elevation Model (DEM) Map), 2019b. Online available from <https://tanahair.indonesia.go.id>.
- 8 Central Bureau Statistics of Bulungan Regency. Bulungan in figures 2021, BPS: Tanjung Selor, 2022.
- 9 Ministry of Environment and Forestry of Indonesia. Peta penutupan lahan (Land cover map), 2017. Online available from <https://geoportals.menlhk.go.id/webgis/index.php/en/feature/download>.
- 10 National Standardization Agency. Standar Nasional Indonesia (SNI) No. 7645-1:2014 (Indonesian National Standard (SNI) No. 7645-1:2014), Land Cover Classification, 2014. Online available from <https://www.bsn.go.id>.
- 11 N.E. Bentii., G.S. Gurmesa., T. Argaw., A.B. Aneseyee., S. Gunta., G.B. Kassahun., G.S. Aga., A.A. Asfaw. The current status, challenges and prospects of using biomass energy in Ethiopia, *Biotechnol Biofuels*, Vol. 14, No. 1, 209, 2021.
- 12 H. Masturi., A. Hasanawi., A. Hasanawi. Sinergi dalam pertanian Indonesia untuk mitigasi dan adaptasi perubahan iklim (Synergy in Indonesian agriculture for climate change mitigation and adaptation), *Jurnal Inovasi Penelitian*, Vol. 1, No. 10, 2085-2094, 2021.
- 13 P.W. Gallagher. Energy production with biomass: What are the prospects?, *Choices: The Magazine of Food, Farms and Resource Use*, Vol. 21, No. 1, 21-25, 2006.
- 14 A. Haryana. Biomass utilization as renewable energy for optimization of national energy mix, *Bappenas Working Papers*, Vol. 1, No. 1, 55-65, 2018.
- 15 V.S. Mahajan., P. Jarolim. How to interpret elevated cardiac troponin levels, *Circulation*, Vol. 124, No. 1, 2350-2354, 2011.
- 16 R.E. Schmieder. End organ damage in hypertension, *Deutsches Arzteblatt International*, Vol. 107, No. 49, 866–873, 2010.
- 17 M. Putra., M. Edwin. Analisis status kerusakan tanah pada lahan kering di Kampung Jawa Dusun Kabo Jaya, Sangatta (Analysis of soil damage status on dry land in Kampung Jawa Dusun Kabo Jaya, Sangatta), *Jurnal Pertanian Terpadu*, Vol. 6, No. 2, 109-120, 2018.
- 18 M. Hikmat., B. Barus., M. Ardiansyah., B. Mulyanto. Parameterisasi sifat biofisik lahan sawah dengan menggunakan citra radar resolusi tinggi: Studi Kasus di Kabupaten Indramayu - Jawa Barat (Parameterization of biophysical properties of paddy fields using high resolution radar imagery: A Case Study in Indramayu Regency - West Java), *Jurnal Tanah dan Iklim*, Vol. 43, No. 1, 1-12, 2019.
- 19 Y. Setiawan., K. Yoshino. Spatial modeling on land use change in regional scale of Java Island based-on biophysical characteristics, *Jurnal Pengelolaan Sumberdaya Alam dan Lingkungan*, Vol. 10, No. 3, 511-523, 2020.
- 20 S. Pal., S. Ziaul. Detection of land use and land cover change and land surface temperature in English Bazar urban centre, *The Egyptian Journal of Remote Sensing and Space Science*, Vol. 20, No. 1, 125-145, 2017.
- 21 J.A. Versteegen., C. van der Laan., S.C. Dekker., A.P.C. Faaij., M.J. Santos. Recent and projected impacts of land use and land cover changes on carbon stocks and biodiversity in East Kalimantan, Indonesia, *Ecological Indicators*, Vol. 103, 563-575, 2019.
- 22 B. Drašković., A. Ponosov., N. Zernakova., M. Gutalj., B. Miletić. Land cover types and changes in land use in Republic of Srpska (Bosnia and Herzegovina) over the period 2000–2018, *Journal of the Geographical Institute Jovan Cvijić SASA*, Vol. 70, No. 1, 81–88, 2020.
- 23 A. Huang., R. Shen., Y. Li., H. Han., W. Di., D.F.T. Hagan DFT. A methodology to generate integrated land cover data for land surface model by improving dempster-shafer theory, *Remote Sensing*, Vol. 14, No. 4, 972, 2022.
- 24 El Jazouli., A. Barakat., R. Khellouk. GIS-multicriteria evaluation using AHP for landslide susceptibility mapping in *Oum Er Rbia* high basin (Morocco), *Geoenviron Disasters*, Vol. 6, No. 1, 3, 2019.
- 25 S.P. Ozkan., C. Tarhan. Detection of flood hazard in urban

- areas using GIS: Izmir Cas, *Procedia Technology*, Vol. 22, 373-381, 2016.
- 26 S. Sudaryatno., S.R. El-Yasha., Z.N. Afifah. Thematic geovisualization of the data profile of Kaligesing, Purworejo, Central Java, *Forum Geografi*, Vol. 33, No. 2, 153-161, 2019.
- 27 D. Hernando., M.G. Romana. Development of a soil erosion classification system for cut and fill slopes, *Transportation Infrastructure Geotechnology*, Vol. 2, No. 4, 155-166, 2015.
- 28 A. Roesch., P. Weisskopf., H. Oberholzer., A. Valsangiacomo., T. Nemecek. An approach for describing the effects of grazing on soil quality in life-cycle assessment, *Sustainability*, Vol. 11, No. 18, 4870, 2019.
- 29 E. Siahaan., K. Susila., I. Bhayunagiri. Pemetaan potensi dan status kerusakan tanah lahan pertanian Kecamatan Buleleng, Kabupaten Buleleng (Mapping the potential and status of damage to agricultural land in Buleleng District, Buleleng Regency), *Jurnal Agroekoteknologi Tropika*, Vol. 9, No. 4, 258-267, 2020.
- 30 M. Mentis. Environmental rehabilitation of damaged land, *Forest Ecosystems*, Vol. 7, 19, 2020.
- 31 J. Phillips. The convenient fiction of steady-state soil thickness, *Geoderma*, Vol. 156, No. 3-4, 389-398, 2010.
- 32 F. Yu., B. Faybishenko., A. Hunt., B. Ghanbarian. A simple model of the variability of soil depths, *Water*, Vol. 9, No. 7, 460, 2017.
- 33 J.E. Schoonover, J.F. Crim. An introduction to soil concepts and the role of soils in watershed management, *Journal of Contemporary Water Research & Education*, Vol. 154, No. 1, 21-47, 2015.
- 34 S. Darma., W. Kustiawan., S. Sigithardwinarto., S. Sumaryono. Evaluation of land damage status for biomass production in Loakulu Subdistrict Kutai Kartanegara Regency of East Kalimantan Province Indonesia, *International Journal of Scientific & Technology Research*, Vol. 6, No. 7, 106-110, 2017.
- 35 K. Syahidah., S. Sumarno., S. Hartati. Pemetaan status kerusakan tanah lahan pertanian di Kecamatan Selo, Kabupaten Boyolali (Mapping the damage status of agricultural land in Selo District, Boyolali Regency), *Agrosains*, Vol. 18, No. 1, 6-11, 2016.
- 36 B.F.T. Qurrahman., A. Suriadikusumah., R. Haryanto. Evaluasi kriteria kerusakan tanah untuk produksi biomassa pada lahan kering di Kabupaten Subang (Evaluation of soil damage criteria for biomass production on dry land in Subang Regency), *Soilrens*, Vol. 4, No. 1, 1-5, 2016.
- 37 S. Sumarno., P. Purwanto., S. Rakhmawati. Kajian faktor penyebab kerusakan tanah dalam memproduksi biomassa di Kecamatan Padas Kabupaten Ngawi (Study of factors causing soil damage in producing biomass in Padas District, Ngawi Regency), *Agrotechnology Research Journal*, Vol. 2, No. 1, 35-40, 2018.
- 38 Soil Survey Staff. *Keys to soil taxonomy*, 12th Ed. USDA-Natural Resources Conservation Service, Washington, D.C, 2014.
- 39 S-H. Jien., S-P. Wu., Z-S. Chen., T-H. Chen., C-Y. Chiu. Characteristics and pedogenesis of podzolic forest soils along a toposequence near a subalpine lake in northern Taiwan, *Botanical Studies*, Vo. 51, No. 2, 223-236, 2010.
- 40 A.S. Dariah., N.L. Sutono., W. Nurida., H. Hartatik., E. Pratiwi. Pembenah tanah untuk meningkatkan produktivitas lahan pertanian (Soil repairers to increase agricultural land productivity), *Jurnal Sumberdaya Lahan*, Vol. 9, No. 2, 67-84, 2015.
- 41 S. Sudaryono S. Tingkat kesuburan tanah ultisol pada lahan pertambangan batubara Sangatta, Kalimantan Timur (Ultisol soil fertility rate in Sangatta coal mining area, East Kalimantan), *Jurnal Teknologi Lingkungan*, Vol. 10, No. 3, 337-346, 2009.
- 42 S. Darma. Identifikasi status kerusakan tanah untuk produksi biomassa di Kecamatan Tanjung Palas Timur Kabupaten Bulungan Provinsi Kalimantan Utara (Identification of soil damage status for biomass production in Tanjung Palas Timur District, Bulungan Regency, North Kalimantan Province), *Ziraa'ah*, Vol. 42, No. 1, 8-16, 2017.
- 43 S. Darma., D. Lestari., D.C. Darma. The productivity of wineries – An empirical in Moldova, *Journal of Agriculture and Crops*, Vol. 8, No. 1, 50-58, 2022.
- 44 R. Rindyastuti., L. Hapsari. Adaptasi ekofisiologi terhadap iklim tropis kering: Studi anatomi daun sepuluh jenis tumbuhan berkayu (Ecophysiological adaptation to dry tropical climate: Study of leaf anatomy of ten woody plant species), *Jurnal Biologi Indonesia*, Vol. 13, No. 1, 1-14, 2017.
- 45 S. Ritung., K. Nugroho., M. Mulyani., E. Suryani. Petunjuk teknis evaluasi lahan untuk komoditas pertanian, Edisi Revisi (Technical guide for land evaluation for agricultural commodities, Revised Ed.), Balai Besar Penelitian dan Pengembangan Sumberdaya Lahan Pertanian, Bogor, 2011.
- 46 R. Gentili., R. Ambrosini., C. Montagnani., S. Caronni., S. Citterio. Effect of soil pH on the growth, reproductive investment and pollen allergenicity of *ambrosia artemisiifolia L*, *Frontiers in Plant Science*, Vol. 9, 1335, 2018.
- 47 P.S. Kidd., J. Proctor. Why plants grow poorly on very acid soils: are ecologists missing the obvious?, *Journal of Experimental Botany*, Vol. 52, No. 357, 791-799, 2001.
- 48 F.X. Naramabuye., R.J. Haynes. Effect of organic amendments on soil pH and AI solubility and use of laboratory indices to predict their liming effect, *Soil Science*, Vol. 171, No. 10, 754-763, 2006.
- 49 N. Abdul Halim., R. Abdullah., S. Karsani., N. Osman., Q. Panhwar., C. Ishak. Influence of soil amendments on the growth and yield of rice in acidic soil, *Agronomy*, Vol. 8, No. 9, 165, 2018.
- 50 L.S. Rusli., R. Abdullah., J.S. Yaacob., N. Osman. Organic amendments effects on nutrient uptake, secondary metabolites, and antioxidant properties of *Melastoma malabathricum L*, *Plants*, Vol. 11, No. 2, 153, 2022.
- 51 M.J. Goss., A. Tubeileh., D. Goorahoo. A review of the use of organic amendments and the risk to human health, *Advances in Agronomy*, Vol. 120, 275-379, 2013.
- 52 Z. Tong., G. Quan., L. Wan., F. He., X. Li. The effect of fertilizers on biomass and biodiversity on a semi-arid

- grassland of Northern China, Sustainability, Vol. 11, No. 10, 2854, 2019.
- 53 S. Roques., S. Kendall., K. Smith., P. Newell Price., P. Berry. A review of the non-NPKS nutrient requirements of UK cereals and oilseed rape, HGCA Research Review No. 78, Kenilworth, 2013.
- 54 D. Soetrisnanto., M. Christwardana., H. Hadiyanto H. Application of phytoremediation for herbal medicine waste and its utilization for protein production, Reaktor, Vol. 14, No. 2, 129-134, 2012.
- 55 N.S. Yaacob., M.F. Ahmad., A. Sivam., E.F. Hashim., M.N. Maniyam., F. Sjahrir., N.F. Dzulkafli., W.M.I. Wan Mohd Zamri., K. Komatsu., V.S. Kuwahara, H. Abdullah. The effectiveness of soil extracts from selangor peat swamp and pristine forest soils on the growth of *green microalgae sp.* Forests, Vol. 13, No. 1, 79, 2022.
- 56 W.J. Elliot., H. Rhee. Impacts of forest biomass operations on forest hydrologic and soil erosion processes, Trees, Forests and People, Vol. 7, 100186, 2022.
- 57 S.R. Sudaryanto., A. Hamzah., M.K. Anwar. Mapping of soil deterioration status for biomass production in the Eastern part of Natuna Districts, IOSR Journal of Agriculture and Veterinary Science, Vol. 3, No. 4, 1–6, 2013.
- 58 Frasetya., A. Suriadikusumah., R. Haryanto., C. Hidayat. A new approach of soil degradation assessment for biomass production in Subang District West Java Province, IOP Conference Series Earth and Environmental Science, Vol. 393, No. 1, 012075, 2019.
- 59 P. David., M. Burgess. Soil erosion threatens food production, Agriculture, Vol. 3, No. 3, 443-463, 2013.
- 60 G. Yang., M. Ryo., J. Roy., S. Hempel., M. C. Rillig. Plant and soil biodiversity have non-substitutable stabilising effects on biomass production, Ecology Letters, Vol. 24, No. 8, 1582–1593, 2021.
- 61 N. Eisenhauer., A. Vogel., B. Jensen., S. Scheu, Decomposer diversity increases biomass production and shifts aboveground-belowground biomass allocation of common wheat, Scientific Reports, Vol. 8, No. 1, 17894, 2018.



Welcome to HRPUB Author's Corner.

Manuscript ID	Journal Title	Submission Date	Papers Status	Latest Reviewer Comments	Action
UJAR-10429065-20220830-073012.doc	Universal Journal of Agricultural Research	2022-08-30 07:30:57	Submit Success		Edit Copyright Review Report(s)

[▶ My Manuscripts](#)[▶ Submit Manuscripts](#)[▶ View / Edit Profile](#)[▶ Change Password](#)[▶ Logout](#)



Welcome to HRPUB Author's Corner.

Manuscript ID	Journal Title	Submission Date	Papers Status	Latest Reviewer Comments	Action
UJAR-10429065-20220830-073012.doc	Universal Journal of Agricultural Research	2022-08-30 07:30:57	Initial Screening	Your manuscript has been assigned to editors for initial screening. The outcome of initial screening will be sent to you by Chloe Crawford (preview.hrpub@gmail.com) within 7 business days.	Edit Copyright Review Report(s)

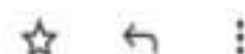
[▶ My Manuscripts](#)[▶ Submit Manuscripts](#)[▶ View / Edit Profile](#)[▶ Change Password](#)[▶ Logout](#)

Manuscript Status Update On (ID: 10429065): Current Status –
Under Peer Review- Effect of Soil Damage on Carrying Capacity of
Biomass Production: An Lessons from Tanjung Selor District –
Tanjung Redeb, Indonesia External Inbox x



Chloe Crawford <preview.hrpub@gmail.com>

Sep 5, 2022, 2:54 PM



to me ▾

Dear Surya Darma,

Thank you very much for submitting your manuscript to **HRPUB**.

In order to expedite the publication process, your manuscript entitled "Effect of Soil Damage on Carrying Capacity of Biomass Production: An Lessons from Tanjung Selor District – Tanjung Redeb, Indonesia" has been sent out to evaluate.

But some problems need to be addressed.

We would be grateful to you if you could revise your manuscript according to the following comments:

1. Figure 1 is unclear. Please provide us the figures with high resolution to allow for reading the details of them. And make sure that all lines and lettering within the figures are legible at final size.

***Please highlight the changes you have made.**

Kindly respond to the evaluation and send your revised manuscript to preview.hrpub@gmail.com as soon as possible. Please track status of your manuscript through the Online Manuscript Tracking System.

We will contact you again once a new decision is made on your manuscript. You will expect a review report from Anthony Robinson (revision.hrpub@gmail.com) in the following 45 days. Peer review reports are also downloadable in Online Manuscript Tracking System (<http://www.hrpub.org/submission/login.php>) once the review process is completed.

The author will be requested to pay the Article Processing Charges after the manuscript is accepted for publication.

For the charging standard, please refer to http://www.hrpub.org/journals/jour_charge.php?id=04

Please feel free to contact us if you have any questions. Besides, could you please leave us an alternate Email Address in case?

For more information, please visit the journal's homepage.

Guidelines: http://www.hrpub.org/journals/jour_guidelines.php?id=04

Please acknowledge receipt of this email.

Best Regards

Chloe Crawford

Editorial Assistant

preview.hrpub@gmail.com

Horizon Research Publishing, USA

<http://www.hrpub.org>



Surya Darma <surya_darma@faperta.unmul.ac.id>

to Chloe ▾

Sep 19, 2022, 5:06 PM



Dear Editorial Assistant of UJAR: Prof. Dr. Chloe Crawford,

Thank you for your kindness. I'm sorry that I can only reply to this message because a few weeks ago my colleagues and I were doing research in the field. To respond to the correction of the paper, especially the pictures and some sentences that are not quite right, I need to revise the manuscript. All shape changes are highlighted with a "yellow print" mark. Please receive the repair file in this e-mail and we will attach it to the system. Waiting for a positive response from you.

Greetings,

Dr. Surya Darma



One attachment • Scanned by Gmail ⓘ



Effect of Soil Damage on Carrying Capacity of Biomass Production: An Lessons from Tanjung Selor District – Tanjung Redeb, Indonesia

Surya Darma^{1*}, Fahrunsyah Fahrunsyah¹

¹Department of Agroecotechnology, Faculty of Agriculture, Universitas Mulawarman, Samarinda, 75119, East Kalimantan, Indonesia
*Corresponding Author: surya_darma@faperta.unmul.ac.id

Copyright©2021 by authors, all rights reserved. Authors agree that this article remains permanently open access under the terms of the Creative Commons Attribution License 4.0 International License

Abstract Currently, land use is considered intensive for various purposes that affect the soil as the main series of land and the environment. The other side of the soil in Kalimantan is naturally formed from material that is poor in nutrients so it is not fertile and acidic. This study attempted to evaluate the status of soil damage to the carrying capacity for biomass production in **Tanjung Selor District**. The overlay analysis of land slope, rainfall, soil type and land cover in the form of a map produces indicative areas of low, medium and high damage. High damage indicative areas were selected for verification, observation and soil sampling to obtain soil damage parameter data, carried out in March 2020. Analysis of the relative frequency score of the damaged parameters to determine the status of **carrying capacity and soil damage**. The results of the study based on 10 soil damage parameters obtained a score of 6 with the status of lightly damaged soil damage, the main factor being soil acidity (R.I-a) with a high carrying capacity of 1,684 ha. The acidity factor with a pH of <4.5 (very acidic) has the most effect, 80% is damaged, but is relatively easy to repair. Efforts to improve cultivated plants that are stressed by soil acidity by using soil amendments to raise the pH above the minimum range that is more suitable to increase biomass production and carrying capacity, namely agricultural lime and compost followed by N, P and K fertilization as needed.

Keywords land use, soil damage status, biomass production, carrying capacity

1. Introduction

Land use for various activities and purposes is increasing and even intensive, so that it affects the quantity and quality of the land component, namely the lithosphere. Lithosphere is part of the outer shell of the earth consisting of rocks and soil that supports life on it, among others, to produce biomass. As a component of land and the environment, the use of land that is more diverse and wider without

considering the carrying capacity can cause soil damage which reduces the production of plant biomass on it. **In the context of the environment, carrying capacity is articulated as a harmonization that supports the life of living things fundamentally for the long term**, especially humans [1].

Soils in Kalimantan are formed from repetitive, nutrient-poor residual parent material such as sandstone. Nutrients that come out are not replaced or replaced but the amount and type are not balanced and for a long time, so that the quality of the soil is reduced or damaged which reduces its carrying capacity for biomass production [2-3]. Another factor is the high rainfall and lasts most of the year with a long period of time and this indicates that alkaline metal nutrient loads are leached to the lower layers and some are carried away by groundwater into water bodies with the consequence that the soil is relatively poor in nutrients and acidic.

As for the motivation and objectivity of **this article to understanding** the status of soil damage to the carrying capacity for biomass production in Tanjung Selor District. **To the author's knowledge, this paper is one of the premises that using more holistic procedures and techniques than other publications.** A study that relates soil damage to carrying capacity based on indicative soil damage parameters. Production of green plant biomass in the form of fruit, tubers, leaves, shoots, stems, skins, flowers, oil as the main food chain on land and life support material. High biomass production can be achieved if the soil of the growing medium is good, otherwise if the soil is damaged. This may be of interest to stakeholders, particularly policy makers.

2. Materials and Methods

2.1. List of Equipments

Operationally, the main research equipment or item consists of soil samples and thematic maps. The maps in

question are the 2012–2032 Bulungan Regency Spatial Plan [4], soil type maps [5], Indonesian topographic maps 1918-42 and 1918-44 [6], Digital Elevation Model (DEM) maps [7], rainfall [8] and land cover map [9] categorization refers to Indonesian National Standard (SNI) No.: 7645-1:2014 [10]. All them are digital-based to support mapping mechanisms and operations. Soil sampling is focused on strategic locations, where observations of high soil damage potential refer to thematic maps accurately. Field activities are equipped with GPS, soil drill, double ring, clinometer, plastic bag and machete. Laboratory equipment and chemicals for soil testing. Then, soil samples identified in the laboratory include: soil biology (bacteria and fungi), chemical properties (pH, DHL, and Redox), and physical properties (fraction composition, specific gravity, and total pores) at the Soil Laboratory at the Faculty of Agriculture – Universitas Mulawarman.

2.2. Indicators

The concentration of areas that become effective work areas are cultivation areas [4] which so far have become prospects for expansion of biomass production, such as horticultural cultivation areas, agricultural and plantation areas, and permanent production and limited production forest areas. Meanwhile, other cultivation areas such as settlements, protected areas, fisheries, and others are not included in the effective areas [11-14].

2.3. Indicative Land Damage

The requirements for measuring indicative damage are based on 4 parameters that are weighted based on their strong influence on soil damage, i.e. slope (%) and rainfall (mm.th⁻¹) weight 3, soil type (*Ordo*) and land cover weight 2, total weight 10 [15-17]. Each vital parameter is rated according to its potential damage. The ratings for each parameter are: Slope 1 (1-8%), 2 (9-15%), 3 (16-25%), 4 (26-40%), and 5 (>40%). rainfall 5 (> 4000), 4 (3000-4000), 3 (2000-3000), 2 (1000-2000), and 1 (<1000). Soil 1 (*Vertisols Aquic moisture regime*), 2 (*Oxisols*), 3 (*Mollisols, Ultisols*), 4 (*Inceptisols, Entisols, Histosols*), and 5 (*Andisols, Spodosols*). Land cover related to crop coefficient includes 1–Natural forest, rice fields, pure fertile alang-alang; 2–Mixed gardens, shrubs, meadows; 3–Production forests, cultivation; 4–Perennials;

and 5–Open land [18]. This land cover will be equivalent to the land cover of SNI: 7645-1:2014 found at the activity site [10]. Each weight multiplied by the rating yields a specific score [19-23].

2.4. Map Overlay

The next step is the treatment of overlapping operations with ArcGis version 10.2 on slope maps, rainfall maps, soil types maps and land cover maps [24-25]. Sudaryatno [26], Hernando & Romana [27], and Roesch *et al.* [28] popularized the most important parts obtaining total scores (smallest 10) and (largest 50). The entire map area is only in the effective working area. It should be noted that the total score is classified according to the assumption of indicative soil damage potential into 5 classes (*Table 1*). These results provide a spatial sign of potential soil damage as a guide for field verification.

Table 1. Indicative soil damage potential

Groups	Score
“Very high”	≤45–50
“High”	≤35–44
“Moderate”	≤25–34
“Low”	≤15–24
“Very low”	<15

Source: adopted from Siahaan [29].

2.5. Field Verification

Furthermore, field verification only focuses on locations of high indicative soil damage potential to prove the truth of the potential damage [30]. When in the field, the independent system soil observations at 10 representative sites of the dimensions of solum thickness, surface rock, degree of water release, and taking soil samples at a depth of 0–20 cm for laboratory review [31-33].

2.6. Categorization of Land Damage Status

Finally, compile the status of soil damage using the relative frequency scoring method with the provisions of the comparison of the number of soil samples based on the parameters of the laboratory analysis results classified as damaged (%) to all soil samples.

Table 2. Relative frequency ground damage score

Frequency (%)	Score	Measures	Carrying capacity
0 – 11	0	“Not damaged”	“Very high”
11 – 25	1	“Slightly damaged”	“High”
26 – 50	2	“Medium”	“Moderate”
51 – 75	3	“Heavily damaged”	“Low”
76 – 100	4	“Very heavily damaged”	“Very low”

Source: Darma *et al.* [34].

Other parameters observed directly in the field were classified as damaged (%) against all observations of the

same parameters in the field (see Table 2). The types of parameters and their assessments refer to Table 4, the parameters are declared damaged if they are outside the

threshold. The maximum accumulated score is 40 if all or 10 parameters (Table 4) are damaged, then divided into 5 classes (Table 3).

Table 3. Relationship of accumulated score to soil damage

Symbol	Accumulated score	Status	Carrying capacity
R.IV	35–40	“Very heavily damaged”	“Very low”
R.III	25–34	“Heavily damaged”	“Low”
R.II	15–24	“Medium”	“Moderate”
R.I	1–14	“Slightly damaged”	“High”
N	0	“Not damaged”	“Very high”

Source: compilation from Syahidah [35].

Table 4. Dry land soil damage criteria

Parameters	Symbol	Levels
pH (H ₂ O) --> 1:2.5	a	<4.5 or >8.5
Surface rock	b	> 40%
Filling weight	d	> 1.4 g.cm ⁻³
Electrical conductivity/DHL	e	> 4.0 mS.cm ⁻¹
Composition of colloidal clay and sand fraction	f	<18% clay colloid or >80% tick quartz sand
Number of microbes	m	<10 ² cfu.g ⁻¹ soil
Degree of water pass	p	<0.7 cm.hour ⁻¹ or >8 cm.hour ⁻¹
Redox	r	<200 mV
Solum thickness	s	<20 cm
Solum thickness	s	<20 cm

Source: Qurrahman et al. [36] dan Sumarno et al. [37].

Each parameter that has been scored is then added up, from that number the soil damage status (dry land) is categorized as represented by Table 3.

Table 4 interprets the criteria for dry land soil damage referring to 10 parameters and each with a threshold. Each

field observation sample and the observed soil sample have 10 parameters, the results are compared to determine the parameter that is damaged if the value is outside the threshold.

ha. The overlay of the slope map, rainfall map, soil type map, and land cover map obtained a total score between 20–42 which indicates that the potential for soil damage is indicative of low, medium, to high (see Table 5).

3. Results and Discussion

3.1. Parameter of scores each

After reviewing the slope class, there were scores of 3 (1-8%), 6 (9-15%), 9 (16-25%), 12 (26-40%), rainfall scores 9 (2000-3000). Soil type with a score of 6 (*Ultisols* and *Alfisols*), and 8 (*Inceptisols* and *Entisols*). Land cover from SNI: 7645-1:2014 [10] found 10 equalized classes, where a score of 2 (natural forest, rice fields, pure fertile reeds) was equal to dry land forest, ponds, secondary swamp forest swamp scrub, and secondary mangrove forest. Then, a score of 4 (mixed gardens, shrubs, grasslands) is equal to plantations, a score of 6 (production forest, cultivation), is equal to dryland agriculture, shrubs/shrubs, a score of 8 (seasonal crops) is equal to dryland annual crops, and a score of 10 for open ground.

3.2. Exploration with Overlays

The effective work area in Tanjung Selor Regency supports the designation of a cultivation area with an 39,800

Table 5. Findings on soil damage are indicative

Potential damage	Area (ha)
Low	7,735
Moderate	30,381
High	1,684
Total	39,800

Source: elaboration of Authors.

High indicative soil damage potential is designated as a location for field verification for evaluation and proof of the actual land damage status. The verification point was chosen with consideration of the ease of accessibility and representativeness of the location.

3.3. Overview Attributes

The results of the verification which focused on high indicative damage areas were carried out in early March 2020, observations were made of 10 locations as

representatives, it was found that the soil solum depth for all sample points was >60 cm, slopes 15%–40%, there was a small part of slopes >40%, but only to the extent of inclusion. Interestingly, there are surface rocks with a size of about 2 mm–7.5 cm, but the determination is between 2 mm–1 cm, thus it is classified as gravel. Gravel on the surface and cross section of the soil, to a depth of >40cm with a general distribution of <10%, but two locations \pm 45%. Soil permeability is between 0.55–10.40cm.hour⁻¹. At each observation location, soil samples were taken for laboratory analysis.

3.4. Soil Damage Assessment

Table 6 summarizes the field verification study and the soil analysis. The soil damage parameters are outside the threshold and the parameters are within the threshold. The data collected refers to observations and selection in the field, laboratory studies and analysis of soil damage status, it is concluded that the accumulated score is 6.

Table 6. Soil damage assessment based on relative frequency score

Parameters (symbol)	Components		Soil observations and samples			
	Value	Unit	I	II	III	IV
Solum thickness(s)	< 20	cm	>90	60–90	60–90	>90
Surface rock (b)	> 40	%	<10	45*	<10	<10
Composition of sand fraction (f)	< 18	% clay	36.7	40.3	12.57*	42.26
	> 80	% sand	48.7	30.8	73.3	16.86
Filling weight (d)	>1.4	g.cm ⁻³	1.30	1.42*	1.32	1.34
Total porosity (v)	< 30; >70	%	47	43	53.12	42.3
Degree of water release (p)	< 0.7; >8	cm.hour ⁻¹	0.71	0.55*	7.15	1.02
pH (H2O) --> 1:2.5	< 4.5; >8,5	-	4.4*	4.3*	4.10*	4.2*
Electrical conductivity (e)	> 4	mS.cm ⁻¹	1.87	1.34	2.26	1.97
Redox(r)	< 200	mV	247	200	235	241
Number of microbes (m)	<10 ²	cfu.g ⁻¹ soil	2.2 x 10 ⁴	1.9 x 10 ⁴	2.1 x 10 ⁴	2.1 x 10 ⁴

Table 6. Continued.....

Soil observations and samples						Σ damaged	Relative frequency of damaged soil (%)	Score
V	VI	VII	VIII	IX	X			
>90	>90	>90	>90	>90	60-90	0	0/10 x 100 = 0	0
>10	<10	<10	<10	<10	45*	2	2/10 x 100 = 20	1
29.9	23.1	32	61.2	53.7	17.2*	2	2/10 x 100 = 20	1
52.8	55.9	45.26	39	46.3	72.9	0	0/10 x 100 = 0	0
1.28	1.22	1.28	1.28	1.3	1.26	1	1/10 x 100 = 10	0
56.41	52.57	53.66	50.08	40.43	56.32	0	0/10 x 100 = 0	0
3.06	10.40	3.36	6.32	4.99	7.64	1	1/10 x 100 = 10	0
4.30*	5.84	4.81	4.13*	4.42*	4.33*	8	8/10 x 100 = 80	4
3.35	4.05*	3.05	2.83	3.47	1.95	1	0/10 x 100 = 10	0
213	225	231	275	232	284	0	0/10 x 100 = 0	0
1.8 x 10 ⁴	1.7 x 10 ⁴	2.2 x 10 ⁴	1.8 x 10 ⁴	2.2 x 10 ⁴	1.9 x 10 ⁴	0	0/10 x 100 = 0	0
Accumulated score								6

Source: elaboration of Authors. Remark: *) Beyond critical threshold

Table 6 also explains the accumulated score of soil damage status, which is lightly damaged (R.I) or high carrying capacity with an area of 5,604 ha, originally indicated with high damage potential. The factors causing the soil damage status that affect the status of the soil consist of three main classifications, namely surface rock, clay fraction composition (f), and pH or soil acidity. From this aspect, the pH factor is the largest (80%) outside the threshold, the surface rocks, and the composition of the clay fraction is only 20%. But, the density and degree of water release are only 10% or one point of observation. The dominant soil acidity is below the threshold (<4.5) with a

very acidic status.

The main soil group (*Ordo*) in the overall study area that is dominant is *Ultisols* or *Podsolik* with an area of 29,329 ha or 73.70% in the effective area [38-39]. Soil acidity of *Ultisols* in Kalimantan with a pH of 4.22-4.77 is classified as very acidic [40-42]. The damage status of lightly damaged soil which was originally indicated as having high damage potential can give the same picture that the indication of low and moderate damage is the main factor is pH, especially those found in the same soil type (*Ultisols*) so that it is classified as lightly damaged.

The status of soil damage with the main limiting pH is

very acidic (R.I-a), but the soil still functions well as a natural medium for natural vegetation to grow. Yet, land use for cultivation that produces biomass must be regulated, maintained and maintained so that biomass production remains good [43]. The existing vegetation has adapted to

the soil conditions where it grows in a long period [44]. This vegetation can produce biomass in the form of stems, leaves, flowers, fruits, tubers, sap, bark, roots and oils that support animal life and human dependence in the vicinity.

Table 7. Variety of cultivated plants and their tolerance to minimum soil pH

Plant type	Minimum pH
<i>Foods:</i>	
- Local/upland rice fields	4 ¹⁾ – <5 ³⁾
- Cassava	4 ¹⁾ – <4.8 ³⁾
- Sweet potatoes	4 ¹⁾ – <4.8 ³⁾
- Corn	4 ¹⁾ – <5 ³⁾
- Taro	4 ¹⁾ – <5 ³⁾
<i>Plantations:</i>	
- Coconut	4 ¹⁾ – <4.8 ³⁾
- Palm oil	3.5 ²⁾ – <4.2 ³⁾
- Rubber	3.5 ²⁾ – <4 ³⁾
- Cocoa	4 ¹⁾ – <5.5 ³⁾
- Robusta coffee	4 ¹⁾ – <5.3 ³⁾
<i>Vegetables:</i>	
- Beans	4 ¹⁾ – <5 ³⁾
- Eggplant	4 ¹⁾ – <4.8 ³⁾
- Cucumber	4 ¹⁾ – <4.8 ³⁾
- Chilli	4 ¹⁾ – <5 ³⁾
- Petai	4 ¹⁾ – <5 ³⁾
<i>Fruits:</i>	
- Durian	4 ¹⁾ – <5 ³⁾
- Banana	4 ¹⁾ – <5.2 ³⁾
- Papaya	4 ¹⁾ – <5.5 ³⁾
- Cempedak/Nangka	4 ¹⁾ – <4.5 ³⁾
- Rambutan	4 ¹⁾ – <4.5 ³⁾

Notes: ¹⁾ Rounding off the lowest soil pH at the activity site, ²⁾ Observations of the authors at several locations in North Kalimantan, and ³⁾ adopted from Ritung *et al.* [45].

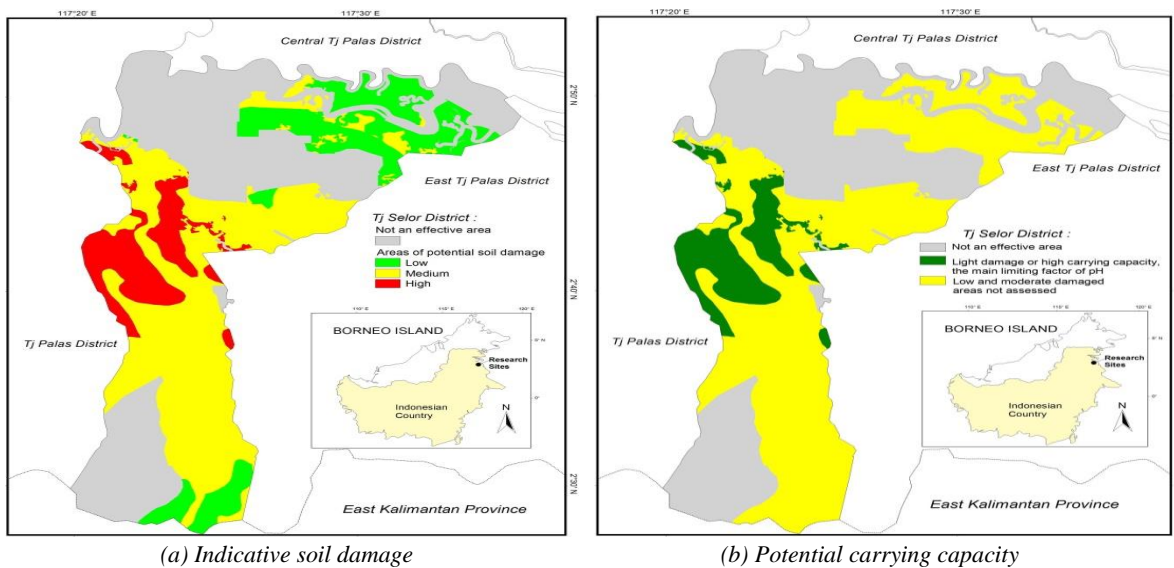


Figure 1. Map of study stage
Source: elaboration of Authors.

The variety of vegetation needed by humans, such as food-producing plants, horticulture, secondary crops,

vegetables, and plantation crops, most of which are not native plants. This is caused by cultivation activities that allow the process of adaptation to their environment. Although growing, these plants require certain requirements to provide good results to the greatest. Observing *Table 7*, plant varieties can produce and grow well in the least soil pH interval, although not optimally [46-47]. Parameters of very acidic soil damage have an explicit impact on the carrying capacity of production yields for a case study of several cultivated plants. Soil pH factors, which are very acidic (<4.5) with dominant (80%) in the study area, must be considered for the suitability of the variety of plants that will be and have been developed (see *Figure 1*).

The act of providing soil amendments to increase soil pH, including within a range that is more suitable for the type of plant and compost [48-51]. In terms of soil amendments, agricultural lime is very suitable for reducing soil acidity or increasing soil pH in encouraging better alignment of plant guidance ranges (above the minimum). Compost is also applicable to increase soil fertility (physical, chemical, and biological) and maintain soil pH stability. Also to soil improvement, extra fertilizer containing N, P and K elements is also good and important to give to plants to increase nutrient availability so that optimal biomass production implies increasing carrying capacity [52]. Very acidic soils are followed by very low to low macronutrient deficiencies [53-55].

Other studies examining the effect of biomass production on soil degradation are discussed. Case study in the Idaho forest in Washington, watershed degradation leads to expansive human use of biomass [56]. Uncontrolled biomass production practices in the eastern part of Natuna Regency, for example, degraded soil quality and function are triggered by development routines [57]. There is similar literature, but different research outputs are also shown by Frasetya *et al.* [58]. The use of land for production forests and explorative agriculture has an impact on land degradation in Subang in West Java (Indonesia). Collectively, Pimentel & Burgess [59] argue that world food production is currently the most concrete threat with implications for soil erosion on agricultural land. Humanity will experience hunger as a result of the food security crisis. Yang *et al.* [60] confirmed that drastic environmental changes actually disrupt the stability of plant biomass productivity. By ignoring soil biodiversity, temporal biomass production cannot respond to plant functional groups. Eisenhauer *et al.* [61] found that there is a positive correlation between plant biomass production and sustainable decomposer diversity.

4. Conclusions

The orientation of this research is to explore the relationship between soil damage and the carrying capacity of biomass production from Tanjung Selor District in Bulungan Regency (North Kalimantan Province). Initial analysis of the 4 main parameters of the output indicated

high soil damage as a reference for field verification. However, further analysis shows that the soil damage status is lightly damaged (R.I-a) with the main limiting factor being very acidic soil acidity. Thus, the carrying capacity of the soil for biomass production is still high. For cultivated plants, it is necessary to provide soil amendments (captan and compost) to reduce the main limiting effect to increase production capacity massively. Additionally, N, P and K fertilizers need to be given to increase soil fertility so that biomass production and carrying capacity are optimal.

Theoretical contributions and practical implications are developed to assist practitioners and researchers in considering the carrying capacity of biomass production and soil degradation. The limitations and directions of future studies are discussed for a more exclusive generalization of these findings and new research flows in the field.

References

- [1] R.M. Subekti., D.S.A. Suroso. Ecological footprint and ecosystem services models: A comparative analysis of environmental carrying capacity calculation approach in Indonesia, Paper presented in the 1st ITB Centennial and 4th Plano Cosmo International Conference 3–5 April 2018, Bandung, Indonesia, IOP Conference Series: Earth and Environmental Science, 158: 012026, 2018.
- [2] S. Darma. Land Suitability of Rice Fields in Bumi Rapak Village and Selangkau Village East Kutai Regency, *Jurnal Ilmu Tanah Dan Lingkungan*, Vol. 24, No. 1, 32-38, 2022.
- [3] F. Fahrunsyah., M. Mulyadi., A. Sarjono., S. Darma. Peningkatan efisiensi pemupukan fosfor pada ultisol dengan menggunakan abu terbang batubara (Increasing the efficiency of phosphorus fertilization on ultisols using coal fly ash), *Jurnal Tanah dan Sumber Daya Alam*. Vol. 8, No. 1, 189-202, 2020.
- [4] Regional Development Planning Agency of Bulungan Regency. Peta administrasi Kabupaten Bulungan. Rencana Tata Ruang Wilayah 2021-2041 (Map of Bulungan Regency administration. Regional Spatial Plan 2021-2041), 2021. Online available from <https://tataruang.atrbpn.go.id/protaru/upload/RtrwT52/Perda%20RTRW%20Kab%20Bulungan%202021-2041.pdf>.
- [5] Center for Research and Development of Agricultural Land Resources of Indonesia. Peta tanah semi detail (Semi-detailed land map), 2016. Online available from <https://bbsdlp.litbang.pertanian.go.id>.
- [6] Geospatial Information Agency of Indonesia. Peta Rupa Bumi Indonesia: Lembar 1918-42 dan Lembar 1918-44 (Indonesian Geographical Map: Sheet 1918-42 and Sheet 1918-44), 2019a. Online available from <https://tanahair.indonesia.go.id>.
- [7] Geospatial Information Agency of Indonesia. Peta Digital Elevation Model (DEM) Nasional (National Digital Elevation Model (DEM) Map), 2019b. Online available from <https://tanahair.indonesia.go.id>.

- [8] Central Bureau Statistics of Bulungan Regency. Bulungan in figures 2021, BPS: Tanjung Selor, 2022.
- [9] Ministry of Environment and Forestry of Indonesia. Peta penutupan lahan (Land cover map), 2017. Online available from <https://geoportal.menlhk.go.id/webgis/index.php/en/feature/download>.
- [10] National Standardization Agency. Standar Nasional Indonesia (SNI) No. 7645-1:2014 (Indonesian National Standard (SNI) No. 7645-1:2014), Land Cover Classification, 2014. Online available from <https://www.bsn.go.id>.
- [11] N.E. Benti., G.S. Gurmesa., T. Argaw., A.B. Aneseyee., S. Gunta., G.B. Kassahun., G.S. Aga., A.A. Asfaw. The current status, challenges and prospects of using biomass energy in Ethiopia, *Biotechnol Biofuels*, Vol. 14, No. 1, 209, 2021.
- [12] H. Masturi., A. Hasanawi., A. Hasanawi. Sinergi dalam pertanian Indonesia untuk mitigasi dan adaptasi perubahan iklim (Synergy in Indonesian agriculture for climate change mitigation and adaptation), *Jurnal Inovasi Penelitian*, Vol. 1, No. 10, 2085-2094, 2021.
- [13] P.W. Gallagher. Energy production with biomass: What are the prospects?, *Choices: The Magazine of Food, Farms and Resource Use*, Vol. 21, No. 1, 21-25, 2006.
- [14] A. Haryana. Biomass utilization as renewable energy for optimization of national energy mix, *Bappenas Working Papers*, Vol. 1, No. 1, 55-65, 2018.
- [15] V.S. Mahajan., P. Jarolim. How to interpret elevated cardiac troponin levels, *Circulation*, Vol. 124, No. 1, 2350-2354, 2011.
- [16] R.E. Schmieder. End organ damage in hypertension, *Deutsches Arzteblatt International*, Vol. 107, No. 49, 866-873, 2010.
- [17] M. Putra., M. Edwin. Analisis status kerusakan tanah pada lahan kering di Kampung Jawa Dusun Kabo Jaya, Sangatta (Analysis of soil damage status on dry land in Kampung Jawa Dusun Kabo Jaya, Sangatta), *Jurnal Pertanian Terpadu*, Vol. 6, No. 2, 109-120, 2018.
- [18] M. Hikmat., B. Barus., M. Ardiansyah., B. Mulyanto. Parameterisasi sifat biofisik lahan sawah dengan menggunakan citra radar resolusi tinggi: Studi Kasus di Kabupaten Indramayu - Jawa Barat (Parameterization of biophysical properties of paddy fields using high resolution radar imagery: A Case Study in Indramayu Regency - West Java), *Jurnal Tanah dan Iklim*, Vol. 43, No. 1, 1-12, 2019.
- [19] Y. Setiawan., K. Yoshino. Spatial modeling on land use change in regional scale of Java Island based-on biophysical characteristics, *Jurnal Pengelolaan Sumberdaya Alam dan Lingkungan*, Vol. 10, No. 3, 511-523, 2020.
- [20] S. Pal., S. Ziaul. Detection of land use and land cover change and land surface temperature in English Bazar urban centre, *The Egyptian Journal of Remote Sensing and Space Science*, Vol. 20, No. 1, 125-145, 2017.
- [21] J.A. Verstegen., C. van der Laan., S.C. Dekker., A.P.C. Faaij., M.J. Santos. Recent and projected impacts of land use and land cover changes on carbon stocks and biodiversity in East Kalimantan, Indonesia, *Ecological Indicators*, Vol. 103, 563-575, 2019.
- [22] B. Drašković., A. Ponosov., N. Zhernakova., M. Gutalj., B. Miletić. Land cover types and changes in land use in Republic of Srpska (Bosnia and Herzegovina) over the period 2000-2018, *Journal of the Geographical Institute Jovan Cvijić SASA*, Vol. 70, No. 1, 81-88, 2020.
- [23] A. Huang., R. Shen., Y. Li., H. Han., W. Di., D.F.T. Hagan DFT. A methodology to generate integrated land cover data for land surface model by improving dempster-shafer theory, *Remote Sensing*, Vol. 14, No. 4, 972, 2022.
- [24] A. El Jazouli., A. Barakat., R. Khellouk. GIS-multicriteria evaluation using AHP for landslide susceptibility mapping in *Oum Er Rbia* high basin (Morocco), *Geoenviron Disasters*, Vol. 6, No. 1, 3, 2019.
- [25] S.P. Ozkan., C. Tarhan. Detection of flood hazard in urban areas using GIS: Izmir Cas, *Procedia Technology*, Vol. 22, 373-381, 2016.
- [26] S. Sudaryatno., S.R. El-Yasha., Z.N. Afifah. Thematic geovisualization of the data profile of Kaligesing, Purworejo, Central Java, *Forum Geografi*, Vol. 33, No. 2, 153-161, 2019.
- [27] D. Hernando., M.G. Romana. Development of a soil erosion classification system for cut and fill slopes, *Transportation Infrastructure Geotechnology*, Vol. 2, No. 4, 155-166, 2015.
- [28] A. Roesch., P. Weisskopf., H. Oberholzer., A. Valsangiacomo., T. Nemecek. An approach for describing the effects of grazing on soil quality in life-cycle assessment, *Sustainability*, Vol. 11, No. 18, 4870, 2019.
- [29] E. Siahaan., K. Susila., I. Bhayunagiri. Pemetaan potensi dan status kerusakan tanah lahan pertanian Kecamatan Buleleng, Kabupaten Buleleng (Mapping the potential and status of damage to agricultural land in Buleleng District, Buleleng Regency), *Jurnal Agroekoteknologi Tropika*, Vol. 9, No. 4, 258-267, 2020.
- [30] M. Mentis. Environmental rehabilitation of damaged land, *Forest Ecosystems*, Vol. 7, 19, 2020.
- [31] J. Phillips. The convenient fiction of steady-state soil thickness, *Geoderma*, Vol. 156, No. 3-4, 389-398, 2010.
- [32] F. Yu., B. Faybishenko., A. Hunt., B. Ghanbarian. A simple model of the variability of soil depths, *Water*, Vol. 9, No. 7, 460, 2017.
- [33] J.E. Schoonover, J.F. Crim. An introduction to soil concepts and the role of soils in watershed management, *Journal of Contemporary Water Research & Education*, Vol. 154, No. 1, 21-47, 2015.
- [34] S. Darma., W. Kustiawan., S. Sigithardwinarto., S. Sumaryono. Evaluation of land damage status for biomass production in Loakulu Subdistrict Kutai Kartanegara Regency of East Kalimantan Province Indonesia, *International Journal of Scientific & Technology Research*, Vol. 6, No. 7, 106-110, 2017.
- [35] K. Syahidah., S. Sumarno., S. Hartati. Pemetaan status kerusakan tanah lahan pertanian di Kecamatan Selo, Kabupaten Boyolali (Mapping the damage status of agricultural land in Selo District, Boyolali Regency), *Agrosains*, Vol. 18, No. 1, 6-11, 2016.
- [36] B.F.T. Qurrahman., A. Suriadikusumah., R. Haryanto. Evaluasi kriteria kerusakan tanah untuk produksi biomassa pada lahan kering di Kabupaten Subang (Evaluation of soil

damage criteria for biomass production on dry land in Subang Regency), *Soilrens*, Vol. 4, No. 1, 1-5, 2016.

- [37] S. Sumarno., P. Purwanto., S. Rakhmawati. Kajian faktor penyebab kerusakan tanah dalam memproduksi biomassa di Kecamatan Padas Kabupaten Ngawi (Study of factors causing soil damage in producing biomass in Padas District, Ngawi Regency), *Agrotechnology Research Journal*, Vol. 2, No. 1, 35-40, 2018.
- [38] Soil Survey Staff. Keys to soil taxonomy, 12th Ed. USDA-Natural Resources Conservation Service, Washington, D.C, 2014.
- [39] S-H. Jien., S-P. Wu., Z-S. Chen., T-H. Chen., C-Y. Chiu. Characteristics and pedogenesis of podzolic forest soils along a toposequence near a subalpine lake in northern Taiwan, *Botanical Studies*, Vol. 51, No. 2, 223-236, 2010.
- [40] A.S. Dariah., N.L. Sutono., W. Nurida., H. Hartatik., E. Pratiwi. Pembena tanah untuk meningkatkan produktivitas lahan pertanian (Soil repairers to increase agricultural land productivity), *Jurnal Sumberdaya Lahan*, Vol. 9, No. 2, 67-84, 2015.
- [41] S. Sudaryono S. Tingkat kesuburan tanah ultisol pada lahan pertambangan batubara Sangatta, Kalimantan Timur (Ultisol soil fertility rate in Sangatta coal mining area, East Kalimantan), *Jurnal Teknologi Lingkungan*, Vol. 10, No. 3, 337-346, 2009.
- [42] S. Darma. Identifikasi status kerusakan tanah untuk produksi biomassa di Kecamatan Tanjung Palas Timur Kabupaten Bulungan Provinsi Kalimantan Utara (Identification of soil damage status for biomass production in Tanjung Palas Timur District, Bulungan Regency, North Kalimantan Province), *Ziraa'ah*, Vol. 42, No. 1, 8-16, 2017.
- [43] S. Darma., D. Lestari., D.C. Darma. The productivity of wineries – An empirical in Moldova, *Journal of Agriculture and Crops*, Vol. 8, No. 1, 50-58, 2022.
- [44] R. Rindyastuti., L. Hapsari. Adaptasi ekofisiologi terhadap iklim tropis kering: Studi anatomi daun sepuluh jenis tumbuhan berkayu (Ecophysiological adaptation to dry tropical climate: Study of leaf anatomy of ten woody plant species), *Jurnal Biologi Indonesia*, Vol. 13, No. 1, 1-14, 2017.
- [45] S. Ritung., K. Nugroho., M. Mulyani., E. Suryani. Petunjuk teknis evaluasi lahan untuk komoditas pertanian, Edisi Revisi (Technical guide for land evaluation for agricultural commodities, Revised Ed.), Balai Besar Penelitian dan Pengembangan Sumberdaya Lahan Pertanian, Bogor, 2011.
- [46] R. Gentili., R. Ambrosini., C. Montagnani., S. Caronni., S. Citterio. Effect of soil pH on the growth, reproductive investment and pollen allergenicity of *ambrosia artemisiifolia* L, *Frontiers in Plant Science*, Vol. 9, 1335, 2018.
- [47] P.S. Kidd., J. Proctor. Why plants grow poorly on very acid soils: are ecologists missing the obvious?, *Journal of Experimental Botany*, Vol. 52, No. 357, 791-799, 2001.
- [48] F.X. Naramabuye., R.J. Haynes. Effect of organic amendments on soil pH and AI solubility and use of laboratory indices to predict their liming effect, *Soil Science*, Vol. 171, No. 10, 754-763, 2006.
- [49] N. Abdul Halim., R. Abdullah., S. Karsani., N. Osman., Q. Panhwar., C. Ishak. Influence of soil amendments on the growth and yield of rice in acidic soil, *Agronomy*, Vol. 8, No. 9, 165, 2018.
- [50] L.S. Rusli., R. Abdullah., J.S. Yaacob., N. Osman. Organic amendments effects on nutrient uptake, secondary metabolites, and antioxidant properties of *Melastoma malabathricum* L, *Plants*, Vol. 11, No. 2, 153, 2022.
- [51] M.J. Goss., A. Tubeileh., D. Goorahoo. A review of the use of organic amendments and the risk to human health, *Advances in Agronomy*, Vol. 120, 275-379, 2013.
- [52] Z. Tong., G. Quan., L. Wan., F. He., X. Li. The effect of fertilizers on biomass and biodiversity on a semi-arid grassland of Northern China, *Sustainability*, Vol. 11, No. 10, 2854, 2019.
- [53] S. Roques., S. Kendall., K. Smith., P. Newell Price., P. Berry. A review of the non-NPKS nutrient requirements of UK cereals and oilseed rape, *HGCA Research Review* No. 78, Kenilworth, 2013.
- [54] D. Soetrisnanto., M. Christwardana., H. Hadiyanto H. Application of phytoremediation for herbal medicine waste and its utilization for protein production, *Reaktor*, Vol. 14, No. 2, 129-134, 2012.
- [55] N.S. Yaacob., M.F. Ahmad., A. Sivam., E.F. Hashim., M.N. Maniyam., F. Sjahrir., N.F. Dzulkafli., W.M.I. Wan Mohd Zamri., K. Komatsu., V.S. Kuwahara, H. Abdullah. The effectiveness of soil extracts from selangor peat swamp and pristine forest soils on the growth of *green microalgae* sp. *Forests*, Vol. 13, No. 1, 79, 2022.
- [56] W.J. Elliot., H. Rhee. Impacts of forest biomass operations on forest hydrologic and soil erosion processes, *Trees, Forests and People*, Vol. 7, 100186, 2022.
- [57] S.R. Sudaryanto., A. Hamzah., M.K. Anwar. Mapping of soil deterioration status for biomass production in the Eastern part of Natuna Districts, *IOSR Journal of Agriculture and Veterinary Science*, Vol. 3, No. 4, 1-6, 2013.
- [58] B. Frasetya., A. Suriadikusumah., R. Haryanto., C. Hidayat. A new approach of soil degradation assessment for biomass production in Subang District West Java Province, *IOP Conference Series Earth and Environmental Science*, Vol. 393, No. 1, 012075, 2019.
- [59] P. David., M. Burgess. Soil erosion threatens food production, *Agriculture*, Vol. 3, No. 3, 443-463, 2013.
- [60] G. Yang., M. Ryo., J. Roy., S. Hempel., M. C. Rillig. Plant and soil biodiversity have non-substitutable stabilising effects on biomass production, *Ecology Letters*, Vol. 24, No. 8, 1582-1593, 2021.
- [61] N. Eisenhauer., A. Vogel., B. Jensen., S. Scheu. Decomposer diversity increases biomass production and shifts aboveground-belowground biomass allocation of common wheat, *Scientific Reports*, Vol. 8, No. 1, 17894, 2018.



Chloe Crawford <preview.hrpub@gmail.com>

Sep 20, 2022, 2:42 PM



to me ▾

Dear Dr. Surya Darma,

Thanks for your kind email.

We have received your paper. If further revision is required, we will contact you again.

Best Regards

Chloe Crawford

Editorial Assistant


preview.hrpub@gmail.com

Horizon Research Publishing, USA

<http://www.hrpub.org>



Revision after Peer Review (ID:10429065)-Effect of Soil Damage on Carrying Capacity of Biomass Production: An Lessons from Tanjung Selor District – Tanjung Redeb, Indonesia External Inbox x

 **Anthony Robinson** <revision.hrpub@gmail.com>

Thu, Oct 27, 2022, 12:38 PM ☆ ↶ ⋮

to me ▾

Dear Surya Darma,

Thank you for your interest in publishing your work in **HRPUB**.

Your manuscript has now been peer reviewed and the comments are accessible in Word format. Peer review reports are also downloadable in Online Manuscript Tracking System (<http://www.hrpub.org/submission/login.php>).

We would be grateful if you could address the comments of the reviewers in a revised manuscript and answer all questions raised by reviewers in a cover letter. Any revision should be made on the attached manuscript.

In addition to necessary revisions, please note that the similarity index of the revised version should be lower than 18% and similarity from a single source should not exceed 5%.

Please download the publication agreement (http://www.hrpub.org/download/HRPUB_Publication_Agreement2022.pdf) and fill in the authors' names, manuscript title, manuscript ID and signature, then send a scanned version to us.



Surya Darma <surya_darma@faperta.unmul.ac.id>
to Anthony ▾

Oct 27, 2022, 10:24 PM



Dear editors,

Thank you for confirming the status of this manuscript. We really appreciate review comments from anonymous reviewers. All revisions in the script file use "yellow markers". To reduce the turnitine ratio, there are some words that are reduced and corrections or additions to sentences. You can download a signed publication approval letter. Next, the authors approve the APC and make payments immediately. Please send us an invoice and LoA so we can report it to the campus. Waiting for your reply.

All the best,
Dr. Surya Darma

2 Attachments • Scanned by Gmail ⓘ



Peer Review Report

Notes

Please return the completed report by email within 21 days;

About HRPUB

Horizon Research Publishing, USA (HRPUB) is a worldwide open access publisher serving the academic research and scientific communities by launching peer-reviewed journals covering a wide range of academic disciplines. As an international academic organization for researchers & scientists, we aim to provide researchers, writers, academic professors and students the most advanced research achievements in a broad range of areas, and to facilitate the academic exchange between them.

Manuscript Information

Manuscript ID: **10429065**

Manuscript Title: **Effect of Soil Damage on Carrying Capacity of Biomass Production: An Lessons from Tanjung Selor District – Tanjung Redeb, Indonesia**

Evaluation Report

General Comments **This study attempted to evaluate the status of soil damage to the carrying capacity for biomass production in Tanjung Selor District (Bulungan Regency, North Kalimantan Province).**

Advantage & Disadvantage **This Study Contains Important Findings.
It guides similar studies.
In this study, the discussion part is considered insufficient.
This research should be discussed with similar studies.**

How to improve **A map containing the location of the study area on Earth should be added to the material section
Examples of other studies in the literature that are similar to this study should be given.
The difference between this study and other studies should be pointed out.**

Please rate the following: (1 = Excellent) (2 = Good) (3 = Fair) (4 = Poor)

Originality: **2**

Contribution to the Field: **1**

Technical Quality: **2**

Clarity of Presentation : **2**

Depth of Research: **3**

Recommendation	
Kindly mark with a ■	
<input type="checkbox"/> Accept As It Is	
<input checked="" type="checkbox"/> Requires Minor Revision	
<input type="checkbox"/> Requires Major Revision	
<input type="checkbox"/> Reject	

Return Date: October 28, 2022

Turnitin Report

by An. Dr. Surya Darma

Submission date: 27-Oct-2022 04:18PM (UTC+0900)

Submission ID: 1922023894

File name: UJAR-10429065.pdf (705.39K)

Word count: 5219

Character count: 27172

Effect of Soil Damage on Carrying Capacity of Biomass Production: An Lessons from Tanjung Selor District – Tanjung Redeb, Indonesia

Surya Darma^{1*}, Fahrunsyah Fahrunsyah¹

6

¹Department of Agroecotechnology, Faculty of Agriculture, Universitas Mulawarman, Samarinda, 75119, East Kalimantan, Indonesia

*Corresponding Author: surya_darma@faperta.unmul.ac.id

Abstract Currently, land use is considered intensive for various purposes that affect the soil as the main series of land and the environment. The other side of the soil in Kalimantan is naturally formed from material that is poor in nutrients so it is not fertile and acidic. This study attempted to evaluate the status of soil damage to the carrying capacity for biomass production in Tanjung Selor District (Bulungan Regency, North Kalimantan Province). The overlay analysis of land slope, rainfall, soil type and land cover in the form of a map produces indicative areas of low, medium and high damage. High damage indicative areas were selected for verification, observation and soil sampling to obtain soil damage parameter data, carried out in March 2020. Analysis of the relative frequency score of the damaged parameters to determine the status of soil damage and carrying capacity. The results of the study based on 10 soil damage parameters obtained a score of 6 with the status of lightly damaged soil damage, the main factor being soil acidity (R.I-a) with a high carrying capacity of 1,684 ha. The acidity factor with a pH of <4.5 (very acidic) has the most effect, 80% is damaged, but is relatively easy to repair. Efforts to improve cultivated plants that are stressed by soil acidity by using soil amendments to raise the pH above the minimum range that is more suitable to increase biomass production and carrying capacity, namely agricultural lime and compost followed by N, P and K fertilization as needed.

Keywords land use, soil damage status, biomass production, carrying capacity

1. Introduction

Land use for various activities and purposes is increasing and even intensive, so that it affects the quantity and quality of the land component, namely the lithosphere. Lithosphere is part of the outer shell of the earth consisting of rocks and soil that supports life on it, among others, to produce biomass. As a component of land and the environment, the use of land that is more diverse and wider without considering the carrying capacity can cause soil damage which reduces the production of plant biomass on it.

Environmental carrying capacity is defined as the harmonization of the environment to meet the needs of living things, especially humans [1].

Soils in Kalimantan are formed from repetitive, nutrient-poor residual parent material such as sandstone. Nutrients that come out are not replaced or replaced but the amount and type are not balanced and for a long time, so that the quality of the soil is reduced or damaged which reduces its carrying capacity for biomass production [2-3]. Another factor is the high rainfall and lasts most of the year with a long period of time and this indicates that alkaline metal nutrient loads are leached to the lower layers and some are carried away by groundwater into water bodies with the consequence that the soil is relatively poor in nutrients and acidic.

As for the motivation and objectivity of the study to understand the status of soil damage to the carrying capacity for biomass production in Tanjung Selor District. To the author's knowledge, this study is one of the first to employ a different approach and technique than the others. A study that relates soil damage to carrying capacity based on indicative soil damage parameters. Production of green plant biomass in the form of fruit, tubers, leaves, shoots, stems, skins, flowers, oil as the main food chain on land and life support material. High biomass production can be achieved if the soil of the growing medium is good, otherwise if the soil is damaged. This may be of interest to stakeholders, particularly policy makers.

2. Materials and Methods

2.1. List of Equipments

Operationally, the main research equipment or item consists of soil samples and thematic maps. The maps in question are the 2012–2032 Bulungan Regency Spatial Plan [4], soil type maps [5], Indonesian topographic maps 1918-42 and 1918-44 [6], Digital Elevation Model (DEM) maps [7], rainfall [8] and land cover map [9] classification refers to Indonesian National Standard (SNI): 145-1:2014 [10]. The whole is digitally based for easy overlapping

operations. Soil samples were taken at locations with high indicative soil damage potential referring to the result of overlapping thematic maps. Field activities are equipped with GPS, soil drill, double ring, clinometer, plastic bag and machete. Laboratory equipment and chemicals for soil testing. The soil samples analyzed in the laboratory included physical characteristics (fraction composition, bulk density, and total pores), chemical characteristics (pH, DHL, and Redox), and soil biology (bacteria and fungi) at the Soil Laboratory at the Faculty of Agriculture – Universitas Mulawarman.

2.2. Indicators

The concentration of areas that become effective work areas are cultivation areas [4] which so far have become prospects for expansion of biomass production, such as horticultural cultivation areas, agricultural and plantation areas, limited production forest areas, and permanent production forest areas. Meanwhile, other areas (protected areas and other cultivation areas such as settlements, fisheries, etc.) are not included in the effective areas [11-14].

2.3. Indicative Land Damage

The requirements for measuring indicative damage are based on 4 parameters that are weighted based on their strong influence on soil damage, i.e. slope (%) and rainfall (mm.th^{-1}) weight 3, soil type (*Ordo*) and land cover weight 2, total weight 10 [15-17]. Each vital parameter is rated according to its potential damage. The ratings for each parameter are: Slope 1 (1-8%), 2 (9-15%), 3 (16-25%), 4 (26-40%), and 5 (>40%). rainfall 5 (> 4000), 4 (3000-4000), 3 (2000-3000), 2 (1000-2000), and 1 (<1000). Soil 1 (*Vertisols Aquic moisture regime*), 2 (*Oxisols*), 3 (*Mollisols, Ultisols*), 4 (*Inceptisols, Entisols, Histosols*), and 5 (*Andisols, Spodosols*). Land cover related to crop coefficient includes 1–Natural forest, rice fields, pure fertile along-alang; 2–Mixed gardens, shrubs, meadows; 3–Production forests, cultivation; 4–Perennials; and 5–Open land [18]. This land cover will be equivalent to the land cover of SNI: 7645-1:2014 found at the activity site [10]. Each weight multiplied by the rating yields a specific

score [19-23].

2.4. Map Overlay

The next step is the treatment of overlapping operations with ArcGis version 10.2 on slope maps, rainfall maps, soil types maps and land cover maps [24-25]. Sudaryatno [26], Hernando & Romana [27], and Roesch *et al.* [28] popularized the most important parts obtaining total scores (smallest 10) and (largest 50). The entire map area is only in the effective working area. It should be noted that the total score is classified according to the assumption of indicative soil damage potential into 5 classes (*Table 1*). These results provide a spatial sign of potential soil damage as a guide for field verification.

Table 1. Indicative soil damage potential

Group	Score
Very low	<15
Low	≤15 – 24
Moderate	<25 – 34
High	≤35 – 44
Very high	≤45 – 50

Source: adopted from Siahaan [29].

2.5. Field Verification

Furthermore, field verification only focuses on locations of high indicative soil damage potential to prove the truth of the potential damage [30]. When in the field, the independent system soil observations at 10 representative sites of the dimensions of solum thickness, surface rock, degree of water release, and taking soil samples at a depth of 0–20 cm for laboratory review [31-33].

2.6. Categorization of Land Damage Status

Finally, compile the status of soil damage using the relative frequency scoring method with the provisions of the comparison of the number of soil samples based on the parameters of the laboratory analysis results classified as damaged (%) to all soil samples.

Table 2. Relative frequency ground damage score

Frequency (%)	Score	Measures	Carrying capacity
0 – 11	0	Not damaged	Very high
1 – 25	1	Slightly damaged	High
26 – 50	2	Medium	Moderate
51 – 75	3	Heavily damaged	Low
76 – 100	4	Very heavily damaged	Very low

Source: Darma *et al.* [34].

Other parameters observed directly in the field were classified as damaged (%) against all observations of the same parameters in the field (see *Table 2*). The types of

parameters and their assessments refer to *Table 4*, the parameters are declared damaged if they are outside the threshold. The maximum accumulated score is 40 if all or

10 parameters (Table 4) are damaged, then divided into 5 classes (Table 3).

Table 3. Relationship of accumulated score to soil damage status

Symbol	Accumulated score	Damage status	Carrying capacity
N	0	Not damaged	Very high
R.I	1 – 14	Slightly damaged	High
R.II	15 – 24	Medium	Moderate
R.III	25 – 34	Heavily damaged	Low
R.IV	35 – 40	Very heavily damaged	Very low

Source: compilation from Syahidah [35].

Table 4. Dry land soil damage criteria

Parameters	Symbol	Levels
Solum thickness	s	<20 cm
Surface rock	b	> 40%
Composition of colloidal clay and sand fraction	f	<18% clay colloid or >80% tick quartz sand
Filling weight	d	> 1.4 g.cm ⁻³
Total porosity	h	<30% or >70%
Degree of water pass	p	<0.7 cm.hr ⁻¹ or >8 cm.hour ⁻¹
pH (H ₂ O) --> 1:2.5	a	<4.5 or >8.5
Electrical conductivity/DHL	e	> 4.0 mS.cm ⁻¹
Redox	r	<200 mV
Number of microbes	m	<10 ² cfu.g ⁻¹ soil

Source: Qurrahman et al. [36] dan Sumarno et al. [37].

Each parameter that has been scored is then added up, from that number the soil damage status (dry land) is categorized as represented by Table 3.

Table 4 interprets the criteria for dry land soil damage referring to 10 parameters and each with a threshold. Each

field observation sample and the observed soil sample have 10 parameters, the results are compared to determine the parameter that is damaged if the value is outside the threshold.

total score between 20–42 which indicates that the potential for soil damage is indicative of low, medium, to high (see Table 5).

3. Results and Discussion

3.1. Score each Parameter

After reviewing the slope class, there were scores of 3 (1-8%), 6 (9-15%), 9 (16-25%), 12 (26-40%), rainfall scores 9 (2000-3000). Soil type with a score of 6 (*Ultisols* and *Alfisols*), and 8 (*Inceptisols* and *Entisols*). Land cover from SNI: 7645-1:2014 [10] found 10 equalized classes, where a score of 2 (natural forest, rice fields, pure fertile reeds) was equal to swamp scrub, dry land forest, secondary mangrove forest, secondary swamp forest, and ponds. Then, a score of 4 (mixed gardens, shrubs, grasslands) is equal to plantations, a score of 6 (production forest, cultivation), is equal to dryland agriculture, shrubs/shrubs, a score of 8 (seasonal crops) is equal to dryland annual crops, and a score of 10 for open ground.

3.2. Exploration with Overlays

The effective work area in Tanjung Selor Regency supports the designation of a cultivation area with an area of 39,800 ha. The results of the overlay of the slope map, rainfall map, soil type map, and land cover map obtained a

Table 5. Findings on soil damage are indicative

Potential damage	Area (ha)
Low	7,735
Moderate	30,381
High	1,684
Total	39,800

Source: elaboration of Authors.

High indicative soil damage potential is designated as a location for field verification for evaluation and proof of the actual land damage status. The verification point was chosen with consideration of the ease of accessibility and representativeness of the location.

3.3. Overview Attributes

The results of the verification which focused on high indicative damage areas were carried out in early March 2020, observations were made of 10 locations as representatives, it was found that the soil solum depth for all sample points was >60 cm, slopes 15%–40%, there was a small part of slopes >40%, but only to the extent of

inclusion. Interestingly, there are surface rocks with a size of about 2 mm–7.5 cm, but the determination is between 2 mm–1 cm, thus it is classified as gravel. Gravel on the surface and cross section of the soil, to a depth of >40cm with a general distribution of <10%, but two locations \pm 45%. Soil permeability is between 0.55–10.40cm.hour⁻¹. At each observation location, soil samples were taken for laboratory analysis.

3.4. Soil Damage Assessment

2 Table 6 summarizes the field verification study and the results of soil analysis in the laboratory. The soil damage parameters are outside the threshold and the parameters are within the threshold. The data collected refers to observations and selection in the field, laboratory studies and analysis of soil damage status, it is concluded that the accumulated score is 6.

Table 6. Soil damage assessment based on relative frequency score

Parameters (symbol)	Components		Soil observations and samples			
	Value	Unit	I	II	III	IV
Solum thickness(s)	< 20	cm	>90	60–90	60–90	>90
Surface rock (b)	> 40	%	<10	45*	<10	<10
Composition of sand fraction (f)	< 18	% clay	36.7	40.3	12.57*	42.26
	> 80	% sand	48.7	30.8	73.3	16.86
Filling weight (d)	>1.4	g.cm ⁻³	1.30	1.42*	1.32	1.34
Total porosity (v)	< 30; >70	%	47	43	53.12	42.3
Degree of water release (p)	< 0.7; >8	cm.hour ⁻¹	0.71	0.55*	7.15	1.02
pH (H2O) --> 1:2.5	< 4.5; >8,5	-	4.4*	4.3*	4.10*	4.2*
Electrical conductivity (e)	> 4	mS.cm ⁻¹	1.87	1.34	2.26	1.97
Redox(r)	< 200	mV	247	200	235	241
Number of microbes (m)	<10 ²	cfu.g ⁻¹ soil	2.2 x 10 ⁴	1.9 x 10 ⁴	2.1 x 10 ⁴	2.1 x 10 ⁴

Table 6. Continued.....

Soil observations and samples						Σ damaged	Relative frequency of damaged soil (%)	Score
V	VI	VII	VIII	IX	X			
>90	>90	>90	>90	>90	60-90	0	0/10 x 100 = 0	0
>10	<10	<10	<10	<10	45*	2	2/10 x 100 = 20	1
29.9	23.1	32	61.2	53.7	17.2*	2	2/10 x 100 = 20	1
52.8	55.9	45.26	39	46.3	72.9	0	0/10 x 100 = 0	0
1.28	1.22	1.28	1.28	1.3	1.26	1	1/10 x 100 = 10	0
56.41	52.57	53.66	50.08	40.43	56.32	0	0/10 x 100 = 0	0
3.06	10.40	3.36	6.32	4.99	7.64	1	1/10 x 100 = 10	0
4.30*	5.84	4.81	4.13*	4.42*	4.33*	8	8/10 x 100 = 80	4
3.35	4.05*	3.05	2.83	3.47	1.95	1	0/10 x 100 = 10	0
213	225	231	275	232	284	0	0/10 x 100 = 0	0
1.8 x 10 ⁴	1.7 x 10 ⁴	2.2 x 10 ⁴	1.8 x 10 ⁴	2.2 x 10 ⁴	1.9 x 10 ⁴	0	0/10 x 100 = 0	0
Accumulated score								6

Source: elaboration of Authors. Remark: *) Beyond critical threshold

Table 6 also explains the accumulated score of soil damage status, which is lightly damaged (R.I) or high carrying capacity with an area of 5,604 ha, originally indicated with high damage potential. The factors causing the soil damage status that affect the status of the soil consist of three main classifications, namely surface rock, clay fraction composition (f), and pH or soil acidity. From this aspect, the pH factor is the largest (80%) outside the threshold, the surface rocks, and the composition of the clay fraction is only 20%. But, the density and degree of water release are only 10% or one point of observation. The dominant soil acidity is below the threshold (<4.5) with a very acidic status.

The main soil group (*Ordo*) in the overall study area that is dominant is *Ultisols* or *Podsolik* with an area of 29,329 ha or 73.70% in the effective area [38-39]. Soil acidity of *Ultisols* in Kalimantan with a pH of 4.22-4.77 is classified as very acidic [40-42]. The damage status of lightly damaged soil which was originally indicated as having high damage potential can give the same picture that the indication of low and moderate damage is the main factor is pH, especially those found in the same soil type (*Ultisols*) so that it is classified as lightly damaged.

The status of soil damage with the main limiting pH is very acidic (R.I-a), but the soil still functions well as a natural medium for natural vegetation to grow. Yet, land

use for cultivation that produces biomass must be regulated, maintained and maintained so that biomass production remains good [43]. So, over a long period of time, the existing vegetation has adapted to the soil conditions where

it grows [44]. This vegetation can produce biomass in the form of stems, leaves, flowers, fruits, tubers, sap, bark, roots and oils that support animal life and human dependence in the vicinity.

Table 7. Variety of cultivated plants and their tolerance to minimum soil pH

Plant type	Minimum pH
<i>Foods:</i>	
- Local/upland rice fields	4 ¹⁾ – <5 ³⁾
- Cassava	4 ¹⁾ – <4.8 ³⁾
- Sweet potatoes	4 ¹⁾ – <4.8 ³⁾
- Corn	4 ¹⁾ – <5 ³⁾
- Taro	4 ¹⁾ – <5 ³⁾
<i>Plantations:</i>	
- Coconut	4 ¹⁾ – <4.8 ³⁾
- Palm oil	3.5 ²⁾ – <4.2 ³⁾
- Rubber	3.5 ²⁾ – <4 ³⁾
- Cocoa	4 ¹⁾ – <5.5 ³⁾
- Robusta coffee	4 ¹⁾ – <5.3 ³⁾
<i>Vegetables:</i>	
- Beans	4 ¹⁾ – <5 ³⁾
- Eggplant	4 ¹⁾ – <4.8 ³⁾
- Cucumber	4 ¹⁾ – <4.8 ³⁾
- Chilli	4 ¹⁾ – <5 ³⁾
- Petai	4 ¹⁾ – <5 ³⁾
<i>Fruits:</i>	
- Durian	4 ¹⁾ – <5 ³⁾
- Banana	4 ¹⁾ – <5.2 ³⁾
- Papaya	4 ¹⁾ – <5.5 ³⁾
- Cempedak/Nangka	4 ¹⁾ – <4.5 ³⁾
- Rambutan	4 ¹⁾ – <4.5 ³⁾

Notes: ¹⁾ Rounding off the lowest soil pH at the activity site, ²⁾ Observations of the authors at several locations in North Kalimantan, and ³⁾ adopted from Ritung *et al.* [45].

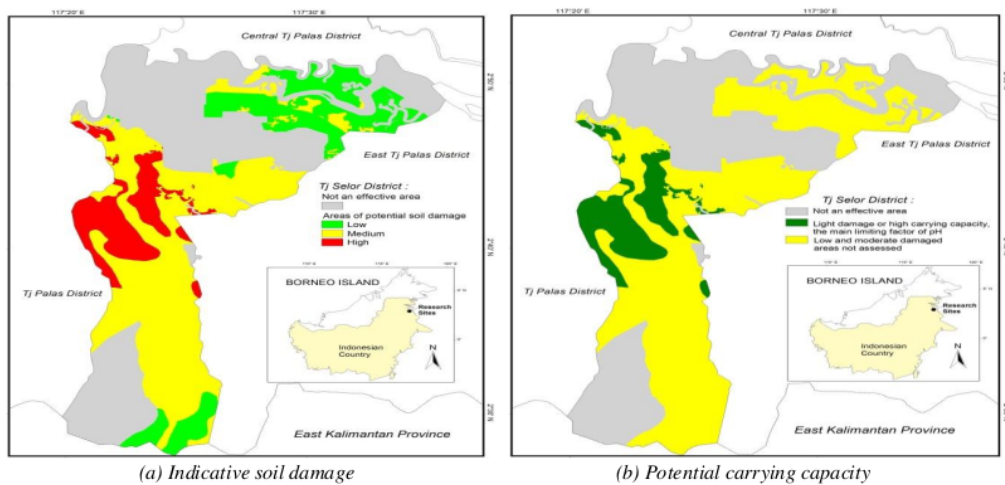


Figure 1. Map of study stage

Source: elaboration of Authors.

The variety of vegetation needed by humans, such as food-producing plants, horticulture, secondary crops,

vegetables, and plantation crops, most of which are not native plants. This is caused by cultivation activities that allow the process of adaptation to their environment. Although growing, these plants require certain requirements to provide good results to the greatest. Observing *Table 7*, plant varieties can produce and grow well in the least soil pH interval, although not optimally [46-47]. Parameters of very acidic soil damage have an explicit impact on the carrying capacity of production yields for a case study of several cultivated plants. Soil pH factors, which are very acidic (<4.5) with dominant (80%) in the study area, must be considered for the suitability of the variety of plants that will be and have been developed (see *Figure 1*).

The act of providing soil amendments to increase soil pH, including within a range that is more suitable for the type of plant and compost [48-51]. In terms of soil amendments, agricultural lime is very suitable for reducing soil acidity or increasing soil pH in encouraging better alignment of plant guidance ranges (above the minimum). Compost is also applicable to increase soil fertility (physical, chemical, and biological) and maintain soil pH stability. Also to soil improvement, extra fertilizer containing N, P and K elements is also good and important to give to plants to increase nutrient availability so that optimal biomass production implies increasing carrying capacity [52]. Very acidic soils are followed by very low to low macronutrient deficiencies [53-55].

4. Conclusions

This study attempted to examine the relationship between soil damage and the carrying capacity of biomass production in Tanjung Selor District (Bulungan Regency, North Kalimantan Province). Initial analysis of the 4 main parameters of the output indicated high soil damage as a reference for field verification. However, further analysis shows that the soil damage status is lightly damaged (R.I-a) with the main limiting factor being very acidic soil acidity. Thus, the carrying capacity of the soil for biomass production is still high. For cultivated plants, it is necessary to provide soil amendments (captan and compost) to reduce the main limiting effect to increase production capacity massively. Additionally, N, P and K fertilizers need to be given to increase soil fertility so that biomass production and carrying capacity are optimal.

Theoretical contributions and practical implications are developed to assist practitioners and researchers in considering the carrying capacity of biomass production and soil degradation. The limitations and directions of future studies are discussed for a more exclusive generalization of these findings and new research flows in the field.

References

- [1] R.M. Subekti., D.S.A. Suroso. Ecological footprint and ecosystem services models: A comparative analysis of environmental carrying capacity calculation approach in Indonesia. Paper presented in the 1st ITB Centennial and 4th Plano Cosmo International Conference 3–5 April 2018, Bandung, Indonesia, IOP Conference Series: Earth and Environmental Science, 158: 012026, 2018.
- [2] S. Darma. Land Suitability of Rice Fields in Bumi Rapak Village and Selangkau Village East Kutai Regency, *Jurnal Ilmu Tanah Dan Lingkungan*, Vol. 24, No. 1, 32-38, 2022.
- [3] F. Fahrnsyah., M. Mulyadi., A. Sarjono., S. Darma. Peningkatan efisiensi pemupukan fosfor pada ultisol dengan menggunakan abu terbang batubara (Increasing the efficiency of phosphorus fertilization on ultisols using coal fly ash), *Jurnal Tanah dan Sumber Daya Alam*. Vol. 8, No. 1, 189-202, 2020.
- [4] Regional Development Planning Agency of Bulungan Regency. Peta administrasi Kabupaten Bulungan. Rencana Tata Ruang Wilayah 2021-2041 (Map of Bulungan Regency administration. Regional Spatial Plan 2021-2041), 2021. Online available from <https://tataruang.atrbpn.go.id/protaru/upload/RtrwT52/Perda%20RTRW%20Kab%20Bulungan%202021-2041.pdf>.
- [5] Center for Research and Development of Agricultural Land Resources of Indonesia. Peta tanah semi detail (Semi-detailed land map), 2016. Online available from <https://bbsdlp.litbang.pertanian.go.id>.
- [6] Geospatial Information Agency of Indonesia. Peta Rupa Bumi Indonesia: Lembar 1918-42 dan Lembar 1918-44 (Indonesian Geographical Map: Sheet 1918-42 and Sheet 1918-44), 2019a. Online available from <https://tanahair.indonesia.go.id>.
- [7] Geospatial Information Agency of Indonesia. Peta Digital Elevation Model (DEM) Nasional (National Digital Elevation Model (DEM) Map), 2019b. Online available from <https://tanahair.indonesia.go.id>.
- [8] Central Bureau Statistics of Bulungan Regency. Bulungan in figures 2021, BPS: Tanjung Selor, 2022.
- [9] Ministry of Environment and Forestry of Indonesia. Peta penutupan lahan (Land cover map), 2017. Online available from <https://geoportal.menlhk.go.id/webgis/index.php/en/feature/download>.
- [10] National Standardization Agency. Standar Nasional Indonesia (SNI) No. 7645-1:2014 (Indonesian National Standard (SNI) No. 7645-1:2014), Land Cover Classification, 2014. Online available from <https://www.bsn.go.id>.
- [11] N.E. Benti., G.S. Gurmesa., T. Argaw., A.B. Aneseyee., S. Gunta., G.B. Kassahun., G.S. Aga., A.A. Asfaw. The current status, challenges and prospects of using biomass energy in Ethiopia, *Biotechnol Biofuels*, Vol. 14, No. 1, 209, 2021.
- [12] H. Masturi., A. Hasanawi., A. Hasanawi. Sinergi dalam pertanian Indonesia untuk mitigasi dan adaptasi perubahan iklim (Synergy in Indonesian agriculture for climate change mitigation and adaptation), *Jurnal Inovasi Penelitian*, Vol. 1, No. 10, 2085-2094, 2021.
- [13] P.W. Gallagher. Energy production with biomass: What are the prospects?, *Choices: The Magazine of Food, Farms and Resource Use*, Vol. 21, No. 1, 21-25, 2006.

- [14] A. Haryana. Biomass utilization as renewable energy for optimization of national energy mix, Bappenas Working Papers, Vol. 1, No. 1, 55-65, 2018.
- [15] V.S. Mahajan., P. Jarolim. How to interpret elevated cardiac troponin levels, *Circulation*, Vol. 124, No. 1, 2350-2354, 2011.
- [16] R.E. Schmieder. End organ damage in hypertension, *Deutsches Arzteblatt International*, Vol. 107, No. 49, 866-873, 2010.
- [17] M. Putra., M. Edwin. Analisis status kerusakan tanah pada lahan kering di Kampung Jawa Dusun Kobo Jaya, Sangatta (Analysis of soil damage status on dry land in Kampung Jawa Dusun Kobo Jaya, Sangatta), *Jurnal Pertanian Terpadu*, Vol. 6, No. 2, 109-120, 2018.
- [18] M. Hikmat., B. Barus., M. Ardiansyah., B. Mulyanto. Parameterisasi sifat biofisik lahan sawah dengan menggunakan citra radar resolusi tinggi: Studi Kasus di Kabupaten Indramayu - Jawa Barat (Parameterization of biophysical properties of paddy fields using high resolution radar imagery: A Case Study in Indramayu Regency - West Java), *Jurnal Tanah dan Iklim*, Vol. 43, No. 1, 1-12, 2019.
- [19] Y. Setiawan., K. Yoshino. Spatial modeling on land use change in regional scale of Java Island based-on biophysical characteristics, *Jurnal Pengelolaan Sumberdaya Alam dan Lingkungan*, Vol. 10, No. 3, 511-523, 2020.
- [20] S. Pal., S. Ziaul. Detection of land use and land cover change and land surface temperature in English Bazar urban centre, *The Egyptian Journal of Remote Sensing and Space Science*, Vol. 20, No. 1, 125-145, 2017.
- [21] J.A. Verstegen., C. van der Laan., S.C. Dekker., A.P.C. Faaij., M.J. Santos. Recent and projected impacts of land use and land cover changes on carbon stocks and biodiversity in East Kalimantan, Indonesia, *Ecological Indicators*, Vol. 103, 563-575, 2019.
- [22] B. Drašković., A. Ponosov., N. Zhernakova., M. Gutalj., B. Miletić. Land cover types and changes in land use in Republic of Srpska (Bosnia and Herzegovina) over the period 2000–2018, *Journal of the Geographical Institute Jovan Cvijić SASA*, Vol. 70, No. 1, 81–88, 2020.
- [23] A. Huang., R. Shen., Y. Li., H. Han., W. Di., D.F.T. Hagan DFT. A methodology to generate integrated land cover data for land surface model by improving dempster-shafer theory, *Remote Sensing*, Vol. 14, No. 4, 972, 2022.
- [24] A. El Jazouli., A. Barakat., R. Khellouk. GIS-multicriteria evaluation using AHP for landslide susceptibility mapping in *Oum Er Rbia* high basin (Morocco), *Geoenviron Disasters*, Vol. 6, No. 1, 3, 2019.
- [25] S.P. Ozkan., C. Tarhan. Detection of flood hazard in urban areas using GIS: Izmir Cas, *Procedia Technology*, Vol. 22, 373-381, 2016.
- [26] S. Sudaryatno., S.R. El-Yasha., Z.N. Afifah. Thematic geovisualization of the data profile of Kaligesing, Purworejo, Central Java, *Forum Geografi*, Vol. 33, No. 2, 153-161, 2019.
- [27] D. Hernando., M.G. Romana. Development of a soil erosion classification system for cut and fill slopes, *Transportation Infrastructure Geotechnology*, Vol. 2, No. 4, 155-166, 2015.
- [28] A. Roesch., P. Weisskopf., H. Oberholzer., A. Valsangiacomo., T. Nemecek. An approach for describing the effects of grazing on soil quality in life-cycle assessment, *Sustainability*, Vol. 11, No. 18, 4870, 2019.
- [29] E. Siahhaan., K. Susila., I. Bhayunagiri. Pemetaan potensi dan status kerusakan tanah lahan pertanian Kecamatan Buleleng, Kabupaten Buleleng (Mapping the potential and status of damage to agricultural land in Buleleng District, Buleleng Regency), *Jurnal Agroekoteknologi Tropika*, Vol. 9, No. 4, 258-267, 2020.
- [30] M. Mentis. Environmental rehabilitation of damaged land, *Forest Ecosystems*, Vol. 7, 19, 2020.
- [31] J. Phillips. The convenient fiction of steady-state soil thickness, *Geoderma*, Vol. 156, No. 3-4, 389-398, 2010.
- [32] F. Yu., B. Faybishenko., A. Hunt., B. Ghanbarian. A simple model of the variability of soil depths, *Water*, Vol. 9, No. 7, 460, 2017.
- [33] J.E. Schoonover, J.F. Crim. An introduction to soil concepts and the role of soils in watershed management, *Journal of Contemporary Water Research & Education*, Vol. 154, No. 1, 21-47, 2015.
- [34] S. Darma., W. Kustiawan., S. Sigithardwinarto., S. Sumaryono. Evaluation of land damage status for biomass production in Loakulu Subdistrict Kutai Kartanegara Regency of East Kalimantan Province Indonesia, *International Journal of Scientific & Technology Research*, Vol. 6, No. 7, 106-110, 2017.
- [35] K. Syahidah., S. Sumarno., S. Hartati. Pemetaan status kerusakan tanah lahan pertanian di Kecamatan Selo, Kabupaten Boyolali (Mapping the damage status of agricultural land in Selo District, Boyolali Regency), *Agrosains*, Vol. 18, No. 1, 6-11, 2016.
- [36] B.F.T. Qurrahman., A. Suriadikusumah., R. Haryanto. Evaluasi kriteria kerusakan tanah untuk produksi biomassa pada lahan kering di Kabupaten Subang (Evaluation of soil damage criteria for biomass production on dry land in Subang Regency), *Soilrens*, Vol. 4, No. 1, 1-5, 2016.
- [37] S. Sumarno., P. Purwanto., S. Rakhmawati. Kajian faktor penyebab kerusakan tanah dalam memproduksi biomassa di Kecamatan Padas Kabupaten Ngawi (Study of factors causing soil damage in producing biomass in Padas District, Ngawi Regency), *Agrotechnology Research Journal*, Vol. 2, No. 1, 35-40, 2018.
- [38] Soil Survey Staff. Keys to soil taxonomy, 12th Ed. USDA-Natural Resources Conservation Service, Washington, D.C, 2014.
- [39] S-H. Jien., S-P. Wu., Z-S. Chen., T-H. Chen., C-Y. Chiu. Characteristics and pedogenesis of podzolic forest soils along a toposequence near a subalpine lake in northern Taiwan, *Botanical Studies*, Vol. 51, No. 2, 223-236, 2010.
- [40] A.S. Dariah., N.L. Sutono., W. Nurida., H. Hartatik., E. Pratiwi. Pembenh tanah untuk meningkatkan produktivitas lahan pertanian (Soil repairers to increase agricultural land productivity), *Jurnal Sumberdaya Lahan*, Vol. 9, No. 2, 67-84, 2015.
- [41] S. Sudaryono S. Tingkat kesuburan tanah ultisol pada lahan pertambangan batubara Sangatta, Kalimantan Timur (Ultisol soil fertility rate in Sangatta coal mining area, East Kalimantan), *Jurnal Teknologi Lingkungan*, Vol. 10, No. 3,

337-346, 2009.

- [42] S. Darma. Identifikasi status kerusakan tanah untuk produksi biomassa di Kecamatan Tanjung Palas Timur Kabupaten Bulungan Provinsi Kalimantan Utara (Identification of soil damage status for biomass production in Tanjung Palas Timur District, Bulungan Regency, North Kalimantan Province), *Ziraa'ah*, Vol. 42, No. 1, 8-16, 2017.
- [43] S. Darma., D. Lestari., D.C. Darma. The productivity of wineries – An empirical in Moldova. *Journal of Agriculture and Crops*, Vol. 8, No. 1, 50-58, 2022.
- [44] R. Rindyastuti., L. Hapsari. Adaptasi ekofisiologi terhadap iklim tropis kering: Studi anatomi daun sepuluh jenis tumbuhan berkayu (Ecophysiological adaptation to dry tropical climate: Study of leaf anatomy of ten woody plant species), *Jurnal Biologi Indonesia*, Vol. 13, No. 1, 1-14, 2017.
- [45] S. Ritung., K. Nugroho., M. Mulyani., E. Suryani. Petunjuk teknis evaluasi lahan untuk komoditas pertanian, Edisi Revisi (Technical guide for land evaluation for agricultural commodities, Revised Ed.), Balai Besar Penelitian dan Pengembangan Sumberdaya Lahan Pertanian, Bogor, 2011.
- [46] R. Gentili., R. Ambrosini., C. Montagnani., S. Caronni., S. Citterio. Effect of soil pH on the growth, reproductive investment and pollen allergenicity of *ambrosia artemisiifolia* L, *Frontiers in Plant Science*, Vol. 9, 1335, 2018.
- [47] P.S. Kidd., J. Proctor. Why plants grow poorly on very acid soils: are ecologists missing the obvious?, *Journal of Experimental Botany*, Vol. 52, No. 357, 791–799, 2001.
- [48] F.X. Naramabuye., R.J. Haynes. Effect of organic amendments on soil pH and AI solubility and use of laboratory indices to predict their liming effect, *Soil Science*, Vol. 171, No. 10, 754–763, 2006.
- [49] N. Abdul Halim., R. Abdullah., S. Karsani., N. Osman., Q. Panhwar., C. Ishak. Influence of soil amendments on the growth and yield of rice in acidic soil, *Agronomy*, Vol. 8, No. 9, 165, 2018.
- [50] L.S. Rusli., R. Abdullah., J.S. Yaacob., N. Osman. Organic amendments effects on nutrient uptake, secondary metabolites, and antioxidant properties of *Melastoma malabathricum* L, *Plants*, Vol. 11, No. 2, 153, 2022.
- [51] M.J. Goss., A. Tubeileh., D. Goorahoo. A review of the use of organic amendments and the risk to human health, *Advances in Agronomy*, Vol. 120, 275–379, 2013.
- [52] Z. Tong., G. Quan., L. Wan., F. He., X. Li. The effect of fertilizers on biomass and biodiversity on a semi-arid grassland of Northern China, *Sustainability*, Vol. 11, No. 10, 2854, 2019.
- [53] S. Roques., S. Kendall., K. Smith., P. Newell Price., P. Berry. A review of the non-NPKS nutrient requirements of UK cereals and oilseed rape, HGCA Research Review No. 78, Kenilworth, 2013.
- [54] D. Soetrisnanto., M. Christwardana., H. Hadiyanto H. Application of phytoremediation for herbal medicine waste and its utilization for protein production, *Reaktor*, Vol. 14, No. 2, 129-134, 2012.
- [55] N.S. Yaacob., M.F. Ahmad., A. Sivam., E.F. Hashim., M.N. Maniyam., F. Sjahrir., N.F. Dzulkafli., W.M.I. Wan Mohd Zamri., K. Komatsu., V.S. Kuwahara, H. Abdullah. The effectiveness of soil extracts from selangor peat swamp and pristine forest soils on the growth of *green microalgae sp.* *Forests*, Vol. 13, No. 1, 79, 2022.

Turnitin Report

ORIGINALITY REPORT

9%

SIMILARITY INDEX

8%

INTERNET SOURCES

2%

PUBLICATIONS

1%

STUDENT PAPERS

PRIMARY SOURCES

1

www.ijstr.org

Internet Source

5%

2

pdfs.semanticscholar.org

Internet Source

1%

3

jurnal.untag-sby.ac.id

Internet Source

1%

4

www.science.gov

Internet Source

<1%

5

archium.ateneo.edu

Internet Source

<1%

6

Submitted to Universitas Mulawarman

Student Paper

<1%

7

A Abubakar, M Fuady, A Achmad. "The evaluation of green open space of disaster prone coastal areas", IOP Conference Series: Materials Science and Engineering, 2021

Publication

<1%

8

M Basyuni, N Sulistyono, B Slamet, R Wati. "Carbon dioxide emissions from forestry and

<1%

peat land using land-use/land-cover changes in North Sumatra, Indonesia", IOP Conference Series: Earth and Environmental Science, 2018

Publication

9

garuda.kemdikbud.go.id

Internet Source

<1 %

10

I N Sunarta, K D Susila, I N Kariasa. "Landslide Hazard Analysis and Damage Assessment for Tourism Destination at Candikuning Village, Tabanan Regency, Bali, Indonesia", IOP Conference Series: Earth and Environmental Science, 2018

Publication

<1 %

11

M Dara, H Zubair, R A Barkey. "Analysis of the North Toraja Regency spatial plan by GIS analysis: Recreation ecosystem and ecotourism", IOP Conference Series: Earth and Environmental Science, 2021

Publication

<1 %

12

link.springer.com

Internet Source

<1 %

13

"Forest Area Function and Purpose Regulation", Wiley, 2013

Publication

<1 %

Exclude bibliography On



Anthony Robinson <revision.hrpub@gmail.com>

Oct 28, 2022, 5:28 PM



to me ▾

Dear Surya Darma,

Thank you for your kind email.

We have received your revised paper and the signed publication agreement. If further revision is not required, you will expect an Acceptance Letter from us in a week.

Regarding the copyright in the publication agreement, you only need to check one box. Please send us a new signed agreement.

Best Regards

Anthony Robinson

Editorial Assistant

revision.hrpub@gmail.com

Horizon Research Publishing, USA

<http://www.hrpub.org>

...

Acceptance Letter & Advice of Payment (ID:10429065)-Effect of Soil Damage on Carrying Capacity of Biomass Production: An Lessons from Tanjung Selor District – Tanjung Redeb, Indonesia

External Inbox x



Anthony Robinson <revision.hrpub@gmail.com>

to me ▾

Nov 4, 2022, 1:19 PM



Dear Surya Darma,

Your paper has been accepted for publication. Herewith attached is the Acceptance Letter.

The publication fee is \$480. Below are Wire Transfer instructions.

Beneficiary name: HORIZON RESEARCH PUBLISHING CO., LTD

Beneficiary account number: 33113742

Banking Swift code for international wires: CATHUS6L

Beneficiary bank name: Cathay Bank

Beneficiary bank address: 4128 Temple City Blvd, Rosemead, CA 91770 United States

Note: Please add \$35.00 for wire transfer fee.

The bank charge would be deducted prior to the receipt of the payment. To avoid a shortfall on the net amount received and request for repayment, authors shall pay the commission charge while making the payment.

Once the payment is finished, please inform us or send the remittance bill to us.

Best Regards



Acceptance Letter

Dear Surya Darma,

Congratulations! As a result of the reviews and revisions, we are pleased to inform you that your following paper has been accepted for publication.

Paper Title: Effect of Soil Damage on Carrying Capacity of Biomass Production: An Lessons from Tanjung Selor District – Tanjung Redeb, Indonesia

Paper ID: 10429065

Contributor (s): Surya Darma, Fahrunsyah Fahrunsyah

It is scheduled for publication on Universal Journal of Agricultural Research, Vol 10, No 6.

The publication fee \$ 480 should be paid within 2 weeks.

Should you have any questions, please feel free to let us know by quoting your **Paper ID** in any future inquiries.

Best wishes,

John Thompson

editorialboard@hrpub.org

Journal Manager

Horizon Research Publishing, USA

<http://www.hrpub.org>



Proof Reading before Publication (ID:10429065)-Effect of Soil Damage on Carrying Capacity of Biomass Production: An Lessons from Tanjung Selor District – Tanjung Redeb, Indonesia External Inbox x



Anthony Robinson <revision.hrpub@gmail.com>

Fri, Nov 18, 2022, 6:05 PM



to me ▾

Dear Surya Darma,

Your manuscript has been accepted for publication. Authors are given a chance of checking the attached manuscript before publication. If we don't receive any confirmation or feedback of the manuscript before 11/21/2022, it will be regarded as the final version.

Please carefully check the whole manuscript to ensure consistency and accuracy in grammar, spelling, punctuation and formatting, especially those parts revised by our team.

All revisions should be made and highlighted on the attached manuscript.

Kindly note that the paper title, author names and affiliations shall not be modified once the paper is published.

Best Regards

Anthony Robinson

Notification of Final Publication

External

Inbox x



editor@hrpub.org

to me ▾

Dec 6, 2022, 6:10 PM



Dear Surya Darma,

We are pleased to inform you that your paper has been published, please refer to the following information for detail:

PAPER ID: 10429065

ONLINE INFO: https://www.hrpub.org/journals/article_info.php?aid=12744

DOWNLOADABLE FULL-TEXT: <https://www.hrpub.org/download/20221130/UJAR9-10429065.pdf>

Please feel free to contact us if you have any questions.

Best regards,

John Thompson

Journal Manager

editor@hrpub.org