

Analysis of land cover change due to mining and its potential economic loss A case study in the Bukit Soeharto Forest Park, East Kalimantan, Indonesia

by Marlon I Aipassa

Submission date: 03-May-2023 07:27AM (UTC+0700)

Submission ID: 2082548076

File name: ase_study_in_the_Bukit_Soeharto_Forest_Park,_East_Kalimantan.pdf (1.02M)

Word count: 7242

Character count: 38430

Analysis of land cover change due to mining and its potential economic loss: A case study in the Bukit Soeharto Forest Park, East Kalimantan, Indonesia

SUNARTO¹, MARLON I. AIPASSA^{2,3,*}, RUJEHAN², ALI SUHARDIMAN², ROCHADI KRISTININGRUM^{2,***},
YOSEP RUSLIM^{2,***}, WULAN IR SARI⁴

¹Doctoral Program, Faculty of Forestry, Universitas Mulawarman, Jl. Penajam, Gunung Kelua, Samarinda 75123, East Kalimantan, Indonesia

²Faculty of Forestry, Universitas Mulawarman, Jl. Penajam, Gunung Kelua, Samarinda 75123, East Kalimantan, Indonesia. Tel./fax.: +62-541-735089,

*email: marlon.i.vanhoe@gmail.com, **rkristiningrum@fahutan.unmul.ac.id, ***yuslim@gmail.com

³Graduate Program of Environmental Sciences, Universitas Mulawarman, Jl. Sambaliung, Gunung Kelua, Samarinda 75123, East Kalimantan, Indonesia

⁴Faculty of Economics and Business, Universitas Mulawarman, Jl. Tanah Grogot, Gunung Kelua, Samarinda 75123, East Kalimantan, Indonesia

Manuscript received: 9 December 2022. Revision accepted: 17 February 2023.

Abstract. Sunarto, Aipassa MI, Rujehan, Suhardiman A, Kristiningrum R, Ruslim Y, Sari WI. 2023. Analysis of land cover change due to mining and its potential economic loss: A case study in the Bukit Soeharto Forest Park, East Kalimantan, Indonesia. *Biodiversitas* 24: 1206-1214. The Bukit Soeharto Forest Park in East Kalimantan, Indonesia, was once a conservation area but experienced annual land cover changes due to natural causes and human activities such as land clearing and mining. These changes can have economic, social, and environmental impacts. Therefore, this research aimed to analyze changes in land cover and potential economic losses from forest degradation due to mining in Bukit Soeharto Research and Education Forest (BSREF) of Mulawarman University. It was conducted from April to October 2022, and the land cover analysis was performed using a series of maps from 2016 to 2022, which were classified based on an overlay technique with the aid of a GIS computer program. The economic valuation of environmental damage was calculated using guidelines from the Regulation of the Minister of Environment No. 7/2014, with a modified method based on the full cost principle. The results showed that the BSREF land, which covers 20,271 ha, experienced changes in the function of the area, with 702.86 ha being converted, resulting in a total economic valuation of environmental damage of approximately 29.6 trillion rupiah due to mining. Therefore, firm action from the local government is necessary to half further conversion and ensure the proper functioning of BSREF as a conservation area.

Keywords: Bukit Soeharto, economic loss, economic valuation, land cover, mining

INTRODUCTION

Key indicators of global environmental change, such as changes in land use and land cover, have significant impacts on several important areas, including biodiversity, climate, urban planning, food security, economic opportunities, water resources, population growth, and the environment (Zhu and Woodcock 2014; Ehrlich et al. 2018; Atasoy 2020; Arowolo and Deng 2018). The Bukit Soeharto Forest Park (BSFP) in East Kalimantan, Indonesia, is a 64,815 hectares conservation area with the potential for rich and diverse natural resources. According to the BKSDA (2021), the BSFP has been classified into 12 distinct land cover types, including; secondary dryland forests, shrubs, secondary mangrove forests, swamp shrubs, mixed dryland agriculture, plantation forests, plantations, open land, settlements, mines, ponds, and water bodies. However, the actual land cover does not align with the designated classification, leading to the area's degradation (Toma et al. 2017). The changes in land cover have implications for the function of Bukit Soeharto. A significant challenge in this region is rampant mining, particularly in the Bukit Soeharto Research and Education Forest (BSREF) (Rujehan and Matius 2018). Despite

ongoing efforts to enforce environmental laws against this illegal activity (Mujiono 2021), the most recent conditions indicate that the land use in this forest area has been severely disturbed, degraded, and threatened due to both internal and external factors. Therefore, more immediate action is necessary to address these issues. Bukit Soeharto is a conservation area for various natural and non-natural plants, animals, and native and non-native species. It is a protected region that provides benefits for research and development, science, education, cultivation support activities, nature tourism and recreation, and cultural preservation.

Environmental damage from open-pit mining can disrupt various ecological functions, such as hydrological functions, carbon absorption, oxygen supply, environmental temperature regulation, and landscape morphology and function. This form of mining also raises soil acidity through ferrite compounds (FeS₂) oxidation. Furthermore, other documented impacts include reduced river water discharge, damage to the landscape as a recharge area, high sedimentation, decreased river water quality, and infiltration (Sudirman et al. 2013; Rahmatillah and Husen 2018; Yanti et al. 2019). To fully understand the extent of the damage to natural resources, a detailed

assessment should be conducted, and the cost of this environmental damage should be quantified using economic valuation methods (Woodruff and Bendor 2016; Suparmoko et al. 2014; Parmawati 2019; Kristiningrum et al. 2020).

Several studies have been conducted in Bukit Soeharto Forest Park (BSFP) to examine land use. According to Suryadi et al. (2017), the BSFP and its buffer zones comprise mining, plantation, settlements, or built-up, and farming with areas of 956 ha, 52 ha, 173 ha, and 16,915 ha, respectively (Forest Park Management Block). Approximately 79% of the BSFP area conforms to its original function, which consists of swamps, water, and shrubs/forests. Meanwhile, 21% of the area is utilized for non-conforming purposes, such as mining, mixed dryland agriculture, dryland agriculture, open land, settlements, ponds/fisheries, and plantations. Ariyani et al. (2020) reported that 2.2 ha is a buffer zone.

The BSFP in East Kalimantan Province has an estimated total economic value of approximately 141 trillion rupiahs (Yulian et al. 2011). The valuation was calculated using contingency methods, substitute values, and productivity approaches, including estimates of medicinal plants, trees, firewood, non-timber forest products, coal, carbon sinks, rocks, and other environmental services. The significant economic value of these natural resources highlights the far-reaching consequences of their degradation for humans and the environment. Degradation of these resources is predicted to disrupt the area's functioning and conservation efforts, leading to ecological imbalances and substantial losses for the state. This has negatively impacted the environment, as demonstrated in studies by (Wasis et al. 2018; Saharjo and Wasis 2019; Duan and Yan 2019; Lee et al. 2020).

Despite numerous studies conducted on the Bukit Soeharto Forest Park (BSFP), it is important to continually monitor changes in land cover as they are prone to evolve. Furthermore, land cover at BSREF and the potential economic impact of environmental damage have never been assessed and evaluated. Therefore, calculating the financial cost of the damage caused to natural resources by the changes in land cover factors is necessary for effective BSFP management (Wasis et al. 2018; Saharjo and Wasis 2019). This is particularly relevant given that the BSFP will serve as a buffer zone for East Kalimantan's new national capital city. Consequently, it is essential to analyze changes in land cover and the economic potential of BSREF for environmental damage resulting from land use inconsistent with its designated function.

3 MATERIALS AND METHODS

Study area

Field research was conducted in the Bukit Soeharto Research and Education Forest (BSREF) of Mulawarman University East Kalimantan Province, Indonesia, which is included in or directly intersects with the new National Capital City, as shown in Figure 1. The research focuses on the changing land cover conditions at BSREF over the last six years, from 2016 to 2022. The environmental damage due to mining is calculated based on land cover data in 2022. Furthermore, the research was conducted from April to October 2022, and the total extent of BSREF was estimated at 20,271 ha based on the Decree of the Minister of Forestry number: 160/Menhut-II/2004. The minimum and maximum temperatures for the area were 21.4°C and 29.9°C, with an average annual rainfall of approximately 2,000 mm (Toma et al. 2017).

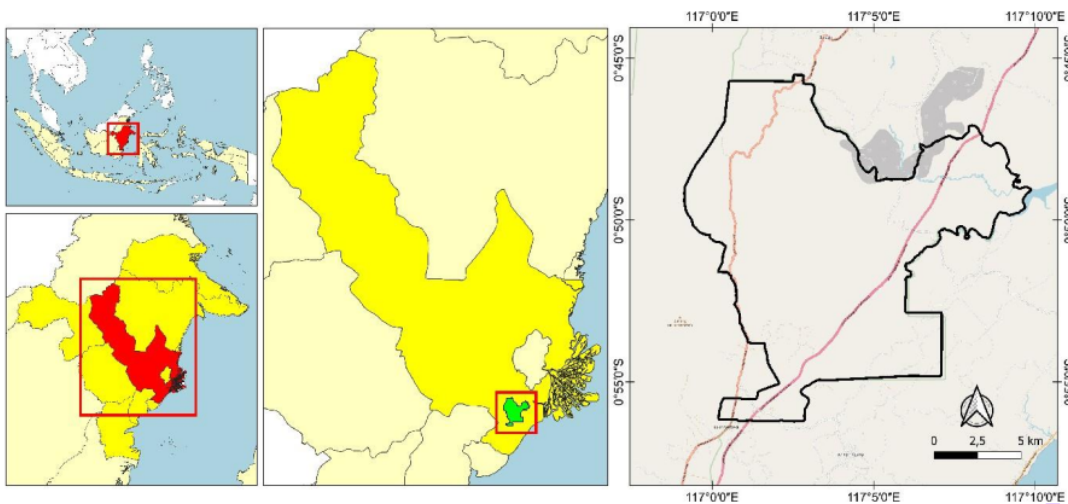


Figure 1. Map of location and work area of Bukit Soeharto Research and Education Forest (BSREF) of Mulawarman University, East Kalimantan, Indonesia

MATERIALS AND METHODS

The materials used in this research were (i) a map of the boundaries of BSREF within the Mulawarman University area, (ii) time series maps of land cover between 2016-2021 obtained from the Ministry of Environment and Forestry under the Forest Carbon Partnership Facility (FCPF) Data, ER Monitoring Report (ER-MR), Monitoring Measurement and Reporting (MMR) for East Kalimantan Province in 2022; and (iii) Landsat Image Map 8 Coverage from January-October 2022.

The tools used in this research were (i) a set of computers equipped with ArcGIS and Global Mapper software, with minimum specifications of 16 GB RAM, 1 TB Hard Disk, and Plotter (ii) Garmin GPS to determine research plot points; (iii) aerial photos captured using the DJI Phantom 3 Professional drone on 24 March 2022, to observe new mine openings in the KHDTK HPPBS UNMUL area, (iv) camera/cellphone for research documentation, (v) stationery as a tool for recording, and (vi) field vehicles for mobilization during research.

Data analysis

The spatial conditions were analyzed through an overlay of land cover using the GIS computer program. The results of the overlap process provided insight into the changes in land cover classes over time, allowing for an evaluation of the extent to which the recorded land cover classes were consistent with the designated function of the BSREF of the Mulawarman University area in 2022. The reduction or addition of land cover areas and their respective functions were calculated and presented in tables and graphs.

The land cover in 2022 was obtained from the interpretation of Landsat 8 imagery. The interpretation followed the Technical Instructions for Interpreting Medium Resolution Satellite Imagery for Updating National Land Cover Data with number; Juknis PSDH/PLA.1/7/2020. That was issued by the Directorate of Inventory and Monitoring of Forest Resources under the Directorate General of Forestry Planning and Environmental Management of the Ministry of Environment and Forestry in 2020. Finally, the process employed remote sensing techniques and spatial metrics, as described by (Fenta et al. 2017).

The economic value of environmental damage caused by mining was calculated by determining the losses based on the Regulation of the Minister of Environment Kalimantan number: 7/2014. Given the various approaches that could be used for this purpose (Suparmoko et al. 2019), selecting an appropriate and accountable method is crucial. In this regard, the economic assessment impact of environmental damage due to mining was based on the Regulation of the Minister of Environment of the Republic Number 7 of 2014 on Environmental Losses resulting from Pollution and Environmental Damage. The regulations provide clear, precise language and legal rules (Wasit 2019; Fauzi 2014). Therefore, an approach based on a modified Full Cost Principle was employed in the economic valuation of damage at BSREF resulting from

mining in protected areas. The compensation includes ecological loss, economic loss, and ecological recovery costs. The valuation figures from the database were then adjusted to the conditions in 2022, assuming a discount rate of 3.5% per year. Therefore, to estimate the current value as of 2022, the basic data was compounded with an annual interest rate of 3.5% (based on deposit rates).

RESULTS AND DISCUSSION

Bukit Soeharto Forest Park and its potential ecosystem

The Bukit Soeharto Grand Forest Park (BSFP) was established based on the Decree of the Minister of Environment and Forestry Number SK.1231/MenLHK-PKTL/KUH/PLA-2/317 dated 16 March 2017, the Amendment Menhut No. SK. 577/Menhut-II/2009 dated 29 September 2009, and Designation of the Bukit Soeharto Forest Park located in Kutai Kartanegara Regency and North Penajam Paser in Kalimantan Province. The Bukit Soeharto area covers 64,814.98 ha, with a Geographical-Location of 000 41' 00" - 010 00' 00" South Latitude and 1160 55' 00" - 1170 03' 00" East Longitude. Its topography varies from flat, through light to heavy Undulations, with swampy land surrounding, the slope between 0% and 25%, and a height of 0 to 100 masl. In general, the condition of Bukit Soeharto varies from mildly undulating to steep hills with a slope of 3% to -25%. Based on the classification of Schmidt and Ferguson, Bukit Soeharto is included in the climate classification type A, with rainfall ranging from 2,000 mm to 2,500 mm year⁻¹. Finally, the temperature ranges from 20°C to 30°C, with an average humidity of 67-95% (BKSDA 2021).

There are three Forest Areas with Special Purposes: (a). Research and Development Forest covering an area of 3,504 ha, managed by the Samboja Natural Resources Conservation Technology Research and Development Center through the Regulation of the Minister of Forestry No. 290/Kpts-II/1991 dated 5 June 1991, and 201/Kpts-II/2004 dated 10 June 2004, (b). The Education and Training Forest, with an area of 4,320 Ha, managed by the Samarinda Forestry Education and Training Center through the Regulation of the Minister of Forestry No. 8815/Kpts-II/2002 dated 24 September 2002, in the Loa Haur Sub-DAS, and (c). Bukit Soeharto Research and Education (BSREF) of Mulawarman University covers an area of 20,271 ha, which is about 30% of the total area of the Bukit Soeharto Forest Park, managed by The Center for Reforestation Studies through the Regulation of the Minister of Forestry No. 160/Menhut-II/2004 dated 4 June 2004.

Based on biodiversity inventory activities and verification of the potential and problems of the BSFP, which were performed in 2021, the BSFP has ecosystems consisting of heath, mangrove, dryland, and pine forests covering areas of 2,936.2 ha, 538.3 ha, 61,316.5 ha, and 14.8 ha, respectively. The forest cover is 37,376.09 ha or 57.7% of the total area of Bukit Soeharto. There are also instances of illegal land use activities such as plantations,

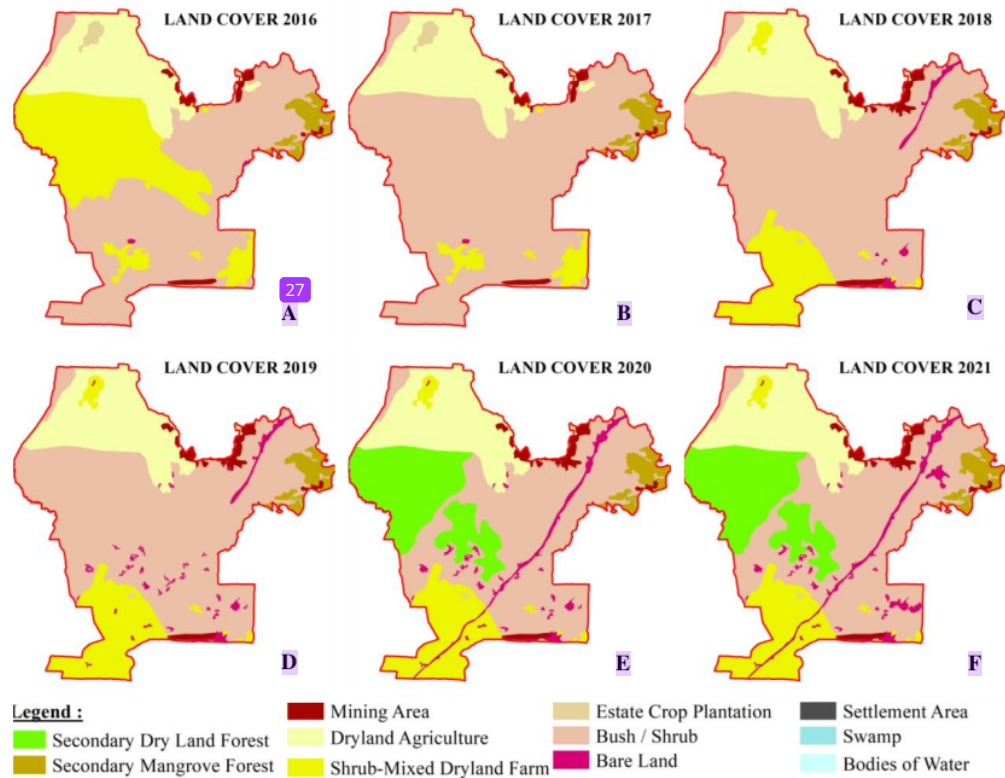


Figure 2. Land cover time series maps for Bukit Soeharto Research and Education Forest (BSREF) of Mulawarman University between 2016 and 2022. A. Land cover in 2016, B. Land cover in 2017, C. Land cover in 2018, C. Land cover in 2019, D. Land cover in 2020, and E. Land cover in 2021

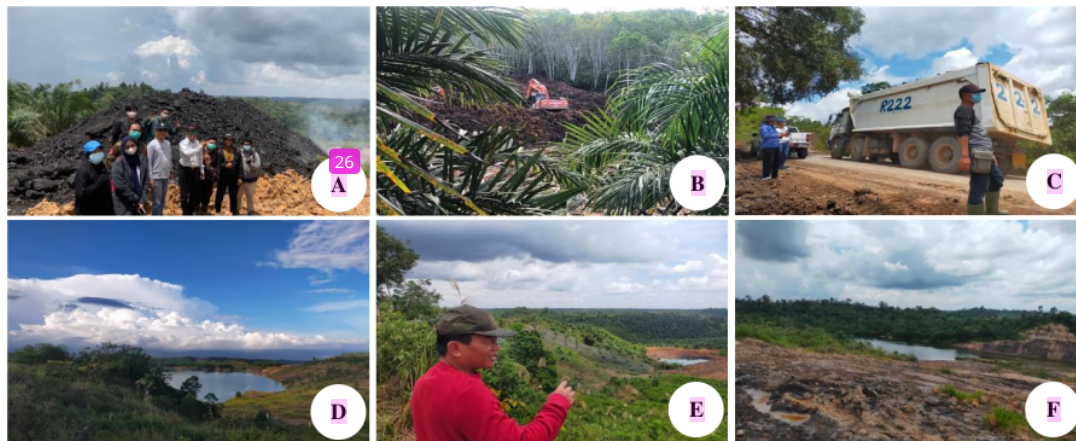


Figure 3. Land use conditions in Bukit Soeharto Research and Education Forest (BSREF) of Mulawarman University. A. Pile of coal, B. Mining land-clearing activities, C. Transporting coal through the BSREF road, D. Void at km 58, E. Pineapple plantations are one form of area utilization, F. Types of ecological damage due to mining

Sarminah et al. (2017) stated that open coal mining techniques have many negative environmental impacts. Changing environmental conditions include decreased soil productivity, erosion, sedimentation, and ground movements or landslides. In addition, land use is related to human activities, the existing resources, and their impacts, such as vegetation (natural or planted) or human construction that covers the ground surface (Li et al. 2022). This will lead to the loss of global biodiversity habitat (Choi et al. 2020). Furthermore, the relationship between land cover change and habitat loss is a consequence of natural processes that can harm human activities. Increasing populations support that, land use intensification, and loss of natural habitats (Wu et al. 2013; Jones et al. 2016; Arowolo et al. 2018; Chughtai et al. 2021). (Wu et al. 2013; Jones et al. 2016; Arowolo et al. 2018; Sapena and Ruiz 2019; Chungtai et al. 2021).

Observing the results above, it appears that the area of land clearing for coal mining mostly occurs around the border of Bukit Soeharto. Several coal mining companies with licenses are located in this area's outermost part. Their existence has resulted in the encroachment of coal mining activities into the Bukit Soeharto area. For instance, the perpetrators used the company's haul road to transport coal out of the region. Therefore, it is necessary to have maximum supervision of these locations to prevent land-clearing expansion.

The value economic losses BSREF due to mining

Mining is one form of damage resulting from changes in land cover that do not follow the intended function. The increasing area of land cover used for mining will have a negative impact on the environment as a whole and decrease biodiversity. The 2022 land cover map identified that the area used for mining in the BSREF of Mulawarman University is 702.86 ha. On 24 March 2022, data was collected through aerial photography utilizing drones, focusing on observation points at the X axis: 503245.30 and Y axis: 9896977.35. The aerial photography resulted in a total captured area of 7.47 ha.

Figure 4 shows environmental damage due to mining with an observation area of 7.47 ha. There are three categories of damaged land resulting from this activity, namely (1) degraded area with an estimated to be 24,954 m², (2) main coal excavation area estimated to be 11,466 m², and (3) bare open land, estimated at 33,912 m². The results of the aerial photography analysis, conducted using drones, show that the coal excavation area and the estimated height of the mine are 61.5 masl - 75 masl, with a depth of 13.5 m. It also indicated that the coal reserves are 5,000 MT, covering an area of 1.2 ha. Therefore, the estimated coal reserves per hectare are 4,167 MT ha⁻¹. Given that the land cover for mining is 702.86 ha, the total estimated coal reserves are 2,928,818 MT.

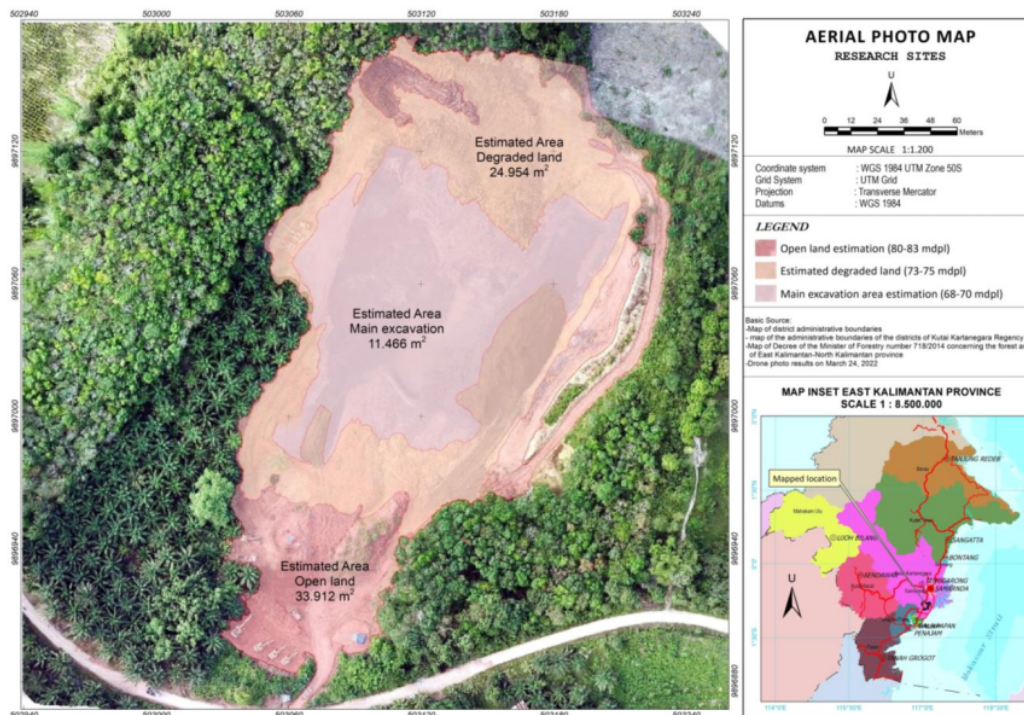


Figure 4. Aerial photo maps of environmental damage due to mining at Bukit Soeharto Research and Education Forest (BSREF) of Mulawarman University, East Kalimantan, Indonesia

The economic valuation of damage and losses caused by illegal mining in the BSREF area of 702.86 ha was calculated based on field research, laboratory analysis, and KLH Economic Valuation guidelines (2006). The calculations followed the land cover specified in the Minister of Environment Regulation Number 7 of 2014 and Wasis (2019). Furthermore, the raw data was adjusted to the current year (2022) by considering an interest rate of 3.5%.

The economic valuation of environmental damage includes three components: ecological losses, financial losses, and recovery costs. The calculation was performed following the Minister of Forestry Regulation number 7 of 2014, as reported by Saharjo and Wasis (2019), which focused on the damage caused by fires on peatlands. Similarly, the present research focuses on the damage and loss caused by mining, based on the Minister of Forestry Regulation number 7 of 2014. Therefore, the estimated cost to the state of the environmental damage caused by the mining encroachment within the BSREF area of Mulawarman University is divided among these three cost categories, as outlined in Table 2.

Table 2 shows that the total value of economic losses from mining in BSREF in 2022 is IDR 29,634,308,951,392 or approximately 29 trillion. This includes ecological losses of IDR 3,812,985,242,057 or about 3.8 trillion, financial loss of IDR 22,029,449,861,316 or 22 trillion, and recovery costs of IDR 3,791,873,848,019 or 3.8 trillion.

Table 2. The total value of economic losses due to mining in the BSREF of Mulawarman University

Description	Value (Rp.)
Cost of ecological losses	
The cost of turning on the water	
Management function	3,748,406,218,866
Water arrangement fee	21,111,394,038
Erosion and runoff control costs	5,553,194,398
Cost of land formation	462,766,200
Nutrient recycling cost	4,266,704,363
Waste decomposition function cost	402,606,594
The cost of losing biodiversity	2,498,937,479
The cost of losing genetic resources	379,468,284
Carbon release costs	29,903,951,835
Total ecological/environmental losses	3,812,985,242,057
Cost of economic losses	
Land value	13,882,985,995,802
Cost of lost lifespan of land	2,961,703,679,104
Coal value	5,184,760,186,410
Total economic losses	22,029,449,861,316
Environmental recovery costs	
Reservoir development costs	3,748,406,218,866
Erosion and runoff control recovery costs	5,553,194,398
Soil formation restoration costs	462,766,200
Nutrient recycler recovery cost	4,266,704,363
Waste decomposition function recovery cost	402,606,594
Biodiversity recovery costs	2,498,937,479
g. Cost of restoring genetic resources	379,468,284
h. Carbon release recovery costs	29,903,951,835
Total recovery cost	3,791,873,848,019
Total cost of environmental damage due to mining	29,634,308,951,392

This is much greater than the valuation of losses in the research by Fachlevi et al. (2015), who estimated the value of community losses due to environmental degradation by coal mining at IDR 1,972,833,514. Furthermore, in earlier research, Yulian et al. (2011) stated that the economic value of damage to natural resources in Bukit Soeharto was Rp. 6,827,810,650,719.90 covering an area of 64,814.98 ha. Therefore, the estimated cost of environmental damage in 2022 was almost 4.3 times the value in the BSREF as of 2010. That implies on the last 12 years, there has been significant land degradation, with the cost almost 4.3 times in 2010.

Coal mining significantly impacts the environment, causing a decline in soil fertility, threatening biodiversity, reducing water and air quality, and causing environmental pollution. It is challenging to mitigate the negative environmental impact of illegal coal mining. The degradation should be prioritized in restoration planning (Nicoleite et al. 2017). Implementing CSR projects in the coal mining sector requires a sustainable livelihood framework (Narula et al. 2017). While post-mining integrated landscapes are recommended for sustainable land use (Kodir et al. 2017), understanding responsible mining practices is limited, leading to uncontrolled environmental damage that negatively impacts the surrounding community.

Mining is crucial for national development but can also severely affect biodiversity directly through operations at extraction sites or indirectly through broader socio-economic development (Seki et al. 2022; Saputri and Harini 2018). There are also decreases in environmental quality due to the government's inability to implement consistent policies to protect and manage the environment, especially in mining areas. Despite this, the community positively perceives the presence of coal mining companies. However, mining activities increase the potential for conflict between communities regarding land tenure rights and job vacancies.

The indirect negative impacts of mining are often overlooked (Mancini and Sala 2018; Sonter et al. 2014). These effects are indirectly caused by population growth, disruption of biodiversity, and reduction of various ecosystem services, such as water quality, carbon sequestration, pollination, and soil regulation (Csillik and Asner 2020; Roy et al. 2018; Tollefson 2019). Mining can lead to water pollution, reduced water biota, changes in soil structure, and even contribute to landslides and flooding during heavy rains. Additionally, its activities result in environmental imbalances, such as reduced water biota in rivers, pollution, and the formation of holes due to dredging. Most coal mines are operated through an open pit system, which significantly impacts the environment (Agboola et al. 2020; Esbri et al. 2023). Continued operation is feared to result in even greater issues such as deforestation, loss of vegetation diversity, land degradation, pollution of specific rivers, and air and residue pollution (Fachlevi et al. 2015; Sudarmadji and Hartati 2016; Jimmy and Merang 2020). The waste from open pit coal mining includes solid waste from stripping and removing topsoil, excavating overburden, and washing

4al. The mining process is closely related to the dredging of natural resources and causes changes in land cover and soil morphology (Hartati and Sudarmadji 2022). As a result of these activities, there are changes in soil structure at the excavation site, affecting soil fertility. For this reason, soil excavation procedures need to be adjusted to minimize soil damage.

The Bukit Soeharto Forest Park is the largest area of Borneo's tropical forest habitat and is located within the delineated plan for the State Capital of the Republic of Indonesia. This research showed that several locations in the Bukit Soeharto area were damaged due to both human activities and natural factors. The damage to the forest ecosystem needs to be dealt with comprehensively. In addition to restoring the ecosystem, the state should enforce a law that apprehends individuals who deliberately commit illegal acts in Bukit Soeharto and upholds the state's authority in maintaining the integrity of legislated conservation areas.

12 ACKNOWLEDGEMENTS

The authors are grateful to the Head of BKSDA East Kalimantan Province, Indonesia, Ivan Yusvi Noor and Andis, for their support during the research. The authors are also thankful to Febriyanto Mauldanyah for helping to create the research site maps. Also, thanks to Dani²e Kreb, Nisa Novita, Graham Eagleton, Eko Swandono and anonymous reviewers for their constructive feedback to improve the manuscript.

REFERENCES

- Agboola O, Babatunde DE, Fayomi OSI, Sadiku ER, Papoola P, Moropeng L, Yahaya A, Mamudu OA. 2020. A review on the impact of mining operation: monitoring, assessment, and management. *Results Eng* 8: 100181. DOI: 10.1016/j.rineng.2020.100181.
- Ariyani D, Syaifitri ED, Yorika R. 2020. Determination of the buffer area for the Bukit Soeharto Forest Park Area in the Samboja Kutai Kartanegara District. *Ruang* 6 (2): 93-101. DOI: 10.14710/ruang.6.2.93-101. [Indonesian]
- Arowolo A, Deng X. 2018. Land use/land cover change and statistical modelling of cultivated land change drivers in Nigeria. *Reg Environ Change* 18 (4): 247-259. DOI: 10.1007/s10113-017-1186-5.
- Atasoy M. 2020. Assessing the impacts of land-use/land-cover change on the development of urban heat island effects. *Environ Dev Sustain* 22: 7547-7557. DOI: 10.007/s10668-019-00535-w.
- BKSDA (Natural Resources Conservation Center). 2021. Inventory of verification of potentials and problems of conservation areas in the prospective location for the national capital city of the Bukit Soeharto Grand Forest Park, East Kalimantan Province. BKSDA Research Report, Samarinda. [Indonesian]
- Bode M, Tulloch ATT, Mills M, Venter O, Ando AW. 2015. A conservation planning approach to mitigate the impacts of leakage from protected area networks. *Conserv Biol* 29 (3): 765-774. DOI: 10.1111/cobi.12434.
- Bryan BA, Ye Y, Connor JD. 2018. Land-use change impacts on ecosystem services value: Incorporating the scarcity effects of supply and demand dynamics. *Ecosyst Serv* 32: 144-157. DOI: 10.1016/j.ecoser.2018.07.002.
- Choi Y, Baek J, Park S. 2020. Review of GIS- based applications for mining: planning operation, and environmental management. *Appl Sci* 10 (7): 2266. DOI: 10.3390/app10072266.
- Chughtai AH, Abbasi H, Karas IR. 2021. A review on change detection method and accuracy assessment for land use land cover. *Remote Sens Appl: Soc Environ* 22: 100482. DOI: 10.1016/j.rsase.2021.100482.
- Csillik O, Asner GPA. 2020. Aboveground carbon emissions from gold mining in the Peruvian Amazon. *IOP Publ Environ Res Lett* 15: 1-11. DOI: 10.1088/1748-9326/ab639c.
- Duan Y, Yan B. 2019. Economic gains and environmental losses from international trade: A decomposition of pollution intensity in China's value-added trade. *Energy Econ* 83: 540-554. DOI: 10.1016/j.eneco.2019.08.002.
- Ehrlich D, Kemper T, Pesaresi M, Corbane C. 2018. Essential societal variables to address climate hazard impact. *Environ Sci Policy* 90: 73-82. DOI: 10.1016/j.envsci.2018.10.001.
- Esbri JM, Minang CM, Rivera S, Illescas MM, Noguero EG, Valoys AG, Maguregui M, Thouin H, Brunet FB, Gloaguen E, Hugueras PL. 2023. Evaluation of antimony availability in a mining context: Impact for the environment, and for mineral exploration and exploitation. *Chemosphere* 311: 137086. DOI: 10.1016/j.chemosphere.2022.137086.
- Fachlevi TA, Putri EIK, Simanjuntak MH. 2015. Impact and evaluation of coal mining policy in Mereubo District. *J Agric Environ Pol Treatise* 2 (2): 171-180. DOI: 10.29244/jkebijakan. [Indonesian]
- Fenta AA, Yasuda H, Haregeweyn N, Belay AS, Sibhat ZH, Gebremedhin MA, Mekonnen. 2017. The dynamics of urban expansion and land use/land cover changes using remote sensing and spatial metrics. *Intl J Remote Sens* 38 (14): 4107-4129. DOI: 10.1080/01431161.2017.1317936.
- Fuller C, Ondei S, Brook BW, Buettel JC. 2019. First, do not harm: A systematic review of deforestation spillovers from protected areas. *Global Ecol Conserv* 18: e00591. DOI: 10.1016/j.gecco.2019.e00591.
- Gomes LC, Bianchi FJA, Cardoso IM, Schulte RPO, Arts BMJ, Filho EIF. 2020. Land use and land cover scenarios: an interdisciplinary approach integrating local conditions and the global shared socio-economic pathways. *Land Use Policy* 97: 104723. DOI: 10.1016/j.landusepol.2020.104723.
- Halimi M, Sedighifar Z, Mohammadi C. 2018. Analyzing spatiotemporal land use/cover dynamic using remote sensing imagery and GIS techniques case: Kan basin of Iran. *Geo J* 83 (1): 1067-1077. DOI: 10.1007/s10708-017-9819-2.
- Hartati W, Sudarmadji T. 2022. The dynamics of soil carbon in revegetated post-coal mining sites: A case study in Berau, East Kalimantan, Indonesia. *Biodiversitas* 23 (10): 4984-4991. DOI: 10.13057/biodiv/d231004.
- Jimmy N, Merang KRI. 2020. The impact of coal mining on the socio-economic life of the community in Apung Village, Tanjung Selor District, Bulungan Regency. *J Ilmu Admin Negara* 8 (2): 111-121. DOI: 10.31629/juan.v8i2.2679. [Indonesian]
- Jones KR, Watson JEM, Possingham H, Klein C. 2016. Incorporating climate change into spatial conservation prioritisation: A review. *Biol Conserv* 194: 121-130. DOI: 10.1016/j.biocon.2015.12.008.
- Kodir A, Hartono DM, Haeruman H, Mansur I. 2017. Integrated post mining landscape for sustainable land use: A case study in South Sumatera, Indonesia. *Sustain Environ Res* 27 (4): 203-213. DOI: 10.1016/j.serj.2017.03.003.
- Kristiningrum R, Lahjie AM, Masjaya, Yusuf S, Ruslim Y, Ma'rif A. (2020). Fauna diversity, production potential and total economic value of mangrove ecosystem in Mentawir Village, East Kalimantan, Indonesia. *Biodiversitas* 21 (5): 1940-1953. DOI: 10.13057/biodiv/d210522.
- Kuswanda W, Sunandar AD. 2019. Analysis of land use change and its relation to land potential and elephant habitat at Besitang Watershed, North Sumatera, Indonesia. *Biodiversitas* 20 (1): 350-358. DOI: 10.13057/biodiv/d200141. [Indonesian]
- Lee M, Jung JY, Park KC, Choi SH. 2020. Environmental and economic loss analyses of the oil discharge from shipwreck for salvage planning. *Mar Pollut Bull* 155: 111142. DOI: 10.1016/j.marpolbul.2020.111142.
- Mancini L, Sala S. 2018. Social impact assessment in the mining sector: Review and comparison of indicators frameworks. *Resour Pol* 57: 98-111. DOI: 10.1016/j.resourpol.2018.02.002.
- Milanova EV, Telnova NO. 2007. Land-use and land-cover change study in the transboundary zone of Russia - Norway. Man in the landscape across Frontiers - Igu-LUCC Central Europe Conference 2007 - Proceedings. www.cz/geografie/vzgr/monografie/man_in_the_landscape/12milanova.pdf

- Mujiono. 2021. Environmental Law Enforcement Efforts Against Illegal Coal Mining in the Bukit Soeharto East Kalimantan. [Thesis]. Mulawarman University, Samarinda. [Indonesian]
- Najmuddin O, Li Z, Khan R, Zhuang W. 2022. Valuation of land-use/land-cover-based ecosystem services in Afghanistan - An assessment of the past and future. *Land* 11 (11): 1906. DOI: 10.3390/land11111906.
- Narula SA, Magray MA, Desore A. 2017. A sustainable livelihood framework to implement CSR project in coal mining sector. *J Sustain Min* 16 (3): 83-93. DOI: 10.1016/j.jsm.2017.10.001.
- Nicoleite ER, Overbeck GE, Müller SC. 2017. Degradation by coal mining should be priority in restoration planning. *Perspect Ecol Conserv* 15 (3): 202-205. DOI: 10.1016/j.PECON.2017.05.006.
- Pamawati R. 2019. Valuasi Ekonomi Sumberdaya Alam & Lingkungan Menuju Ekonomi Hijau. Universitas Brawijaya Press, Malang. [Indonesian]
- Quintas-Soriano C, Castro AJ, Castro H, Garcia-Liorente M. 2016. Impact of land use change on ecosystem services and implication for human well-being in Spanish drylands. *Land Use Pol* 54: 534-548. DOI: 10.1016/j.landusepol.2016.03.011.
- Rahmatillah S, Husen T. 2018. Misuse of mining management against environmental damage in Central Kluet District. *Legitimacy* 7 (1): 149-171. DOI: 10.22373/legitimasi.v7i1.3969.
- Regulation of the Minister of Environment. 2014. Environmental losses due to pollution and or environmental damage. Republic of Indonesia. [Indonesian]
- Renwick AR, Bode M, Venter O. 2015. Reserves in context: planning for leakage from protected areas. *PloS One* 10 (6): e0129441. DOI: 10.1371/journal.pone.0129441.
- Roy BA, Zorrilla M, Endara L, Thomas DC, Vandergrift RV, Rubenstein JM, Policha T, Touma BR, Read M. 2018. New mining concession decrease biodiversity and ecosystem services in Ecuador. *Trop Conserv Sci* 11: 1-20. DOI: 10.1177/1940082918780427.
- Rujehan, Matus P. 2018. Potential and management strategy of floral biodiversity in coastal areas in East Kalimantan, Indonesia. *Biodiversitas* 19 (3): 1130-1137. DOI: DOI: 10.13057/biodiv/d190348.
- Saharjo BH, Wasis B. 2019. Economic valuation of environmental damage due to peat fires in Mak Teduh Village, Riau Province. *J Silvicultura Tropika* 10 (1): 63-67. DOI: 10.29244/j-siltrop.10.1.58-62. [Indonesian]
- Sapena M, Ruiz LA. 2019. Analysis of land use/land cover spatio-temporal metrics and population dynamics for urban growth characterization. *Comput Environ Urban Syst* 73: 27-39. DOI: 10.1016/j.compenvurbysys.2018.08.001.
- Saputri HD, Harini R. 2018. Public perception of the impact of coal mining on the socio-economic conditions of the community in Talawi sub-district, Sawahlunto, West Sumatra. *Indones Earth J* 7: 1-8. DOI: 10.29244/j-siltrop.10.1.58-62.
- Saminah S, Kristanto D, Syafrudin M. 2017. Analysis of the level of erosion hazard in the coal mine reclamation area of PT Jembayan Muara Bara, East Kalimantan. *Trop For J* 1 (2): 154-162. DOI: 10.32522/ujht.v1i2.793.
- Seki HA, Thorn JPR, Platss PJ, Shirima DD, Marchant RA, Abeid Y, Baker N, Annandale M, Marshall. 2022. Indirect impact of commercial gold mining on adjacent ecosystems. *Biol Conserv* 275: 109782. DOI: 10.1016/j.biocon.2022.109782.
- Sonter LJ, Moran CJ, Barrett DJ, Filho BSS. 2014. Processes of land use change in mining regions. *J Cleaner Prod* 84: 494-501. DOI: 10.1016/j.jclepro.2014.03.084.
- Sudarmadji T, Hartati W. 2016. The process of rehabilitation of mined forest lands toward degraded forest ecosystem recovery in Kalimantan, Indonesia. *Biodiversitas* 17 (1): 185-191. DOI: 10.13057/biodiv/d170127.
- Sudirman, Indradi, Sarjita. 2013. Profile and economic valuation impact of coal mining in East Kalimantan. STPN Strategic Research Report. [Indonesian]
- Suparmoko, Sudirman, Setyarko, Wibowo. 2014. Economic valuation of natural resources and environment. BPFE, Yogyakarta. [Indonesian]
- Sumi, Baja S, Arsyad U. 2015. Dynamics of changes in land use, land cover concerning to potential loss of biodiversity in the downstream of Tallo watershed, South Sulawesi. *Proceedings of the National Seminar on the Indonesian Biodiversity Community* 1 (5): 1050-1055. DOI: 10.13057/psnmbi/m010515. [Indonesian]
- Suryadi, Aipassa MI, Ruchaemi A, Matus P. 2017. Studi tata guna kawasan Taman Hutan Raya Bulit Soeharto. *J Penelitian Ekosistem Dipterokarpa* 3 (1): 43-48. DOI: 10.20886/jped.2017.3.1.43-48. [Indonesian]
- Tollefson J. 2019. Fate of Madagascar's forests in the hands of incoming president. *Nature* 565. DOI: 10.1038/d41586-019-0018908.
- Toma T, Warsudi, Osone Y, Sutedjo, Sato T, Sukartiningih. 2017. Sixteen years changes in tree density and aboveground biomass of a logged and burned dipterocarp forest in East Kalimantan, Indonesia. *Biodiversitas* 18 (3): 1159-1167. DOI: 10.13057/biodiv/d180337.
- Venter O, Magrach A, Outram N, Klein CJ, Possingham HP, Marco MD, Watson. 2018. Bias in protected-area location and its effects on long-term aspirations of biodiversity conventions. *Conserv Biol* 32 (1): 127-134. DOI: 10.1111/cobi.12970.
- Wasis B, Saharjo BH, Kusumadewi F, Utami NH, Putra MHW. 2018. Analysis of economic valuation of environmental damage due to sand mine in Gumulung Tonggoh, Indonesia. *Archiv Agri Environ Sci* 3(4): 360-366. DOI: 10.26832/24566632.2018.030405.
- Wasis B. 2019. Calculation of ecological damage from mining destructive power as a state loss. Workshop Jatam, Wahli and CSO.
- Woodruff SC, Bendor TK. 2016. Ecosystem services in urban planning: comparative paradigms and guidelines for high quality plans. *Landscape Urban Plan* 152: 90-100. DOI: 10.1016/j.landurbanplan.2016.04.003.
- Wu KY, Ye XY, Qi ZF, Zhang H. 2013. Impacts of land use/land cover change and socio-economic development on regional ecosystem services: The case of fast-growing Hangzhou metropolitan area, China. *Cities* 31: 276-284. DOI: 10.1016/j.cities.2012.08.003.
- Yadav PK, Kapoor M, Sarma K. 2012. Land use land cover mapping, change detection and conflict analysis of Nagzira-Navegaon Corridor, Central India using geospatial technology. *Int J Remote Sens GIS* 1 (2): 90-98.
- Yanti H, Hos HJ, Kasim SS. 2019. The impact of mining activities on the socio-economic conditions of the community. *Neo Soc* 4 (1): 666-673. DOI: 10/52423/jns.v4i1.7032.
- Yi H, Güneralp B, Filippi AM, Kreuter UP, Güneralp I. 2017. Impacts of land change on ecosystem services in the San Antonio River Basin, Texas, from 1984 to 2010. *Ecol Econ* 135: 125-135. DOI: 10.1016/j.ecolecon.2016.11.019.
- Yulian EN, Syaufina L, Putri EIK. 2011. Economic valuation of the natural resources of the Bukit Soeharto Forest Park in the Province of East Kalimantan. *J Nat Resour Environ Manag* 1 (1): 38-46.
- Zhu Z, Woodcock C. 2014. Continuous change detection and classification of land cover using all available landsat data. *Remote Sens Environ* 144: 152-171. DOI: 10.1016/j.rse.2014.01.011.

Analysis of land cover change due to mining and its potential economic loss A case study in the Bukit Soeharto Forest Park, East Kalimantan, Indonesia

ORIGINALITY REPORT

11%

SIMILARITY INDEX

8%

INTERNET SOURCES

8%

PUBLICATIONS

5%

STUDENT PAPERS

PRIMARY SOURCES

1	Submitted to Universitas Indonesia Student Paper	2%
2	Submitted to Universitas Mulawarman Student Paper	1%
3	pinpdf.com Internet Source	1%
4	"Life on Land", Springer Science and Business Media LLC, 2021 Publication	1%
5	www.bioflux.com.ro Internet Source	1%
6	orcid.org Internet Source	<1%
7	Submitted to School of Business and Management ITB Student Paper	<1%
8	www.ykan.or.id Internet Source	<1%

9	Hamidu A. Seki, Jessica P.R. Thorn, Philip J. Platts, Deo D. Shirima et al. "Indirect impacts of commercial gold mining on adjacent ecosystems", Biological Conservation, 2022 Publication	<1 %
10	journal.uniku.ac.id Internet Source	<1 %
11	ebin.pub Internet Source	<1 %
12	"Geospatial Technology for Landscape and Environmental Management", Springer Science and Business Media LLC, 2022 Publication	<1 %
13	1library.net Internet Source	<1 %
14	Alessandra Falcucci, Luigi Maiorano, Luigi Boitani. "Changes in land-use/land-cover patterns in Italy and their implications for biodiversity conservation", Landscape Ecology, 2006 Publication	<1 %
15	eduvest.greenvest.co.id Internet Source	<1 %
16	J.H. Erasmus, S. Zimmermann, N.J. Smit, W. Malherbe, M. Nachev, B. Sures, V. Wepener. "Human health risks associated with	<1 %

consumption of fish contaminated with trace elements from intensive mining activities in a peri-urban region", Science of The Total Environment, 2022

Publication

17

Kamel Lahssini, Florian Teste, Karun Reuel Dayal, Sylvie Durrieu, Dino Ienco, Jean-Matthieu Monnet. "Combining LiDAR Metrics and Sentinel-2 Imagery to Estimate Basal Area and Wood Volume in Complex Forest Environment via Neural Networks", IEEE Journal of Selected Topics in Applied Earth Observations and Remote Sensing, 2022

Publication

<1 %

18

T Hidayat, L Fitrianingrum, Suharto, Sudibyو. "Ecology and sociology analysis for mineral resources management in Indonesia", IOP Conference Series: Earth and Environmental Science, 2020

Publication

<1 %

19

Ramadhan Dwi Purwanto, Alam Mahadika. "Deforestation and Changes in People's Economies Due to Oil Palm Plantations in East Kalimantan", POPULIKA, 2021

Publication

<1 %

20

en.wikipedia.org

Internet Source

<1 %

link.springer.com

21

Internet Source

<1 %

22

www.sanctuaryasia.com

Internet Source

<1 %

23

www.nnfcc.co.uk

Internet Source

<1 %

24

Bin Wang, Lei Luo. "Service Value of A Bay City Ecosystem Based On Green Buildings And Landscape Pattern Changes", Sustainable Computing: Informatics and Systems, 2022

Publication

<1 %

25

F R Nurkhaeriyah, R Nurcahyo, M Dachyar. "Descriptive Relationship Analysis Between the Program for Pollution Control Evaluation and Rating (PROPER) and ISO 14001", IOP Conference Series: Materials Science and Engineering, 2019

Publication

<1 %

26

assets.researchsquare.com

Internet Source

<1 %

27

file.scirp.org

Internet Source

<1 %

28

www.coursehero.com

Internet Source

<1 %

Exclude quotes On

Exclude matches < 10 words

Exclude bibliography On