

# Sensitivity Analysis of Data Normalization Techniques in Social Assistance Program decision making for Online Learning

*by* editor@astesj.com - Manuscript ID: 20M-10-957

---

**Submission date:** 03-Jul-2021 04:39AM (UTC-0700)

**Submission ID:** 1614539179

**File name:** inal\_journal\_manuscript\_format\_ms\_office\_2007-2019\_-\_submit.docx (780.41K)

**Word count:** 5365

**Character count:** 28315

## Sensitivity Analysis of Data Normalization Techniques in Social Assistance Program decision making for Online Learning

### ARTICLE INFO

Article history:

Received 1:12/21/2020

Accepted:

Online:

Keywords:

Sensitivity

Decision-making

Social Assistance

### ABSTRACT

The Sensitivity analysis of normalized data techniques in decision making has an impact on preferences and rankings in the distribution of internet data packages for help for student online learning, the distribution of assistance is disproportionate and not on target to potential recipients. This study aims to analyze data sensitivity from simple data normalization techniques and linear techniques in decision making. In particular, a simple data normalization technique is illustrated using Simple Additive Weighting (SAW), and a linear technique using the VIšekriterijumsko KOmpromisno Rangiranje (VIKOR) method. There are five criteria used, obtained from observation through measurements and a questionnaire from 400 students. The confusion matrix testing method is used to measure the value of data sensitivity which includes precision, accuracy and error rate. The results of the study obtained data analysis sensitivity for each method shows that the distribution of normalized data in the selection of 10% (40 students) of positive target recipients, the sensitivity of the linear technique (Vikor method) is higher than the simple technique (SAW method). However, for the target of 15% (60 students) the simple method is higher. The results show that each data normalization technique for decision-making analysis has a different sensitivity value in terms of social assistance for target groups, although many studies suggest that certain methods may be better than others.

### 1. Introduction

Education World in the midst of a crisis due the Covid-19 pandemic causes UNICEF, WHO and IFRC[1] appeal that when the situation where the virus is spreading rapidly, schools must be closed and the education process must be continued through online learning activities using various media in "Prevention and Control of COVID-19 spreading in schools[1]". In response to this, the Indonesia Government issued a circular on the implementation of distance learning, through a Circular of the Minister of National Education regarding education policies during the Covid-19 emergency[2].

The closure of 217,270 schools and 4,670 higher education cause students: 25.5 million Primary Schools, 10.12 million junior high schools, 4.78 million senior high schools, 4.9million Vocational high school, 130 thousand children with disabilities schools and 8 million college-undergraduate students in higher education institutions must learn from home (LFH). However, to implement the policy is not as easy as expected. There are many things that make the implementation of online learning not

[www.astesj.com](http://www.astesj.com)

<https://dx.doi.org/10.25046/aj040000>

optimal, the lack of facilities and technological literacy, the unpreparedness of educators for students, and there are several regions, certain areas that do not allow residents to use electricity (IT). In addition, the economic crisis caused by the pandemic has also become an emergency because it is in regard to community welfare issues.

The economic crisis problem has a significant impact on students in fulfilling internet needs for access to online learning, their parents cannot afford it and difficulties in providing more budget to buy internet data. Therefore, several Indonesia region government policies and educational institutions provide free internet data assistance to students to support the continuity of online learning.

The research study is motivated by the subjectivity in decision-making problems in the internet data assistance management to students. The distribution of data assistance is less than optimal and right on target to potential beneficiaries(student).

The normalized data technique according to Vafaei et al is very important for the method of decision making because the data must be numerical and comparable to be combined into one score per alternative[3]. Dubravka M Pavlii's research revealed that normalization affects the results of the MADM method[4]. This study examines the popular effects of normalization procedures and shows that the empirical deformation of data caused by the use of normalization can influence the final choice[4] and Normalization techniques for Analytical hierarchy process case study[5], A. Jahan and K. L. Edwards about A state-of-the-art survey on the influence of normalization techniques in ranking for Improving the materials selection process in engineering design[6], and others. Therefore, it is the author's interest to apply and select appropriate normalization techniques and targeted handling in the distribution of internet data assistance programs.

In an effort to improve decision data analysis management, we propose a decision-making analysis method by providing a sensitivity study of decision-making methods in determining individual and group alternatives. We offer the SAW and Vikor analytical approach as a linear and simple method in preparing the decision matrix. In particularly. The study purpose was to provide an evaluation of the performance sensitivity of the VIšekriterijumsko KOMpromisno Rangiranje (VIKOR) and Simple Additive Weighting (SAW) methods in group decision making for ranking in internet data assistance programs. This study describes the results of the sensitivity analysis using the confusion matrix measurement approach to the sensitivity, accuracy, error rate and precision values.

The research contribution as a novelty in implementation and development extends to the use of decision-making analysis techniques and methods that affect preference assessments in handling cases of distribution of social assistance internet data packages for online learning.

## 2. Materials

### 2.1. An Overview Internet Data Assistance Program

One of the government social programs and various higher education institutions and schools in Indonesia in handling the economic crisis of the community during the Covid-19 pandemic in education is the distribution of internet data assistance to support students in online learning from home. This program is managed by policy makers or stakeholders in an effort to maintain the continuity of learning activities.

The object of study case in one of the higher education in the East Kalimantan Province, Indonesia, in particular on undergraduate students of the informatics department. Mulawarman University.

The initial activity was carried out by observation through collecting information on the needs of the amount of internet data usage, and the economic abilities of students. The observation results showed that the parameters used as criteria for decision making are; Use of Internet Data (C1), Learning Courses (C2), Credit Courses (C3), Economic Capability (C4) and data purchasing power (C5). The description of student characteristics is shown in Table 1.

Table 1: Student Characteristics

Metrics	C1	C2	C3	C4	C5
Attribute	Max	Max	Max	Min	Min
Mean	749.21	7	20	2,133,113	237,000
Median	732.2	7	21	1,950,000	200,000
Mode	490.6	7	24	2,000,000	100,000
Std. Dev.	146.6	1.2	3.1	649,083.2	124,779.5
Min.	490.56	5	14	1,000,000	100,000
Max.	1,130.17	9	24	4,000,000	500,000
N	400	400	400	400	400

Table 1, presents the characteristics of student beneficiaries, divided into 3 categories, the target beneficiaries are those who have the highest attributes in the benefit (max) criteria (C1, C2, C3), and the lowest in the attribute cost (min) criteria (C4, C5), means that, the main priority of potential beneficiaries are those who have internet data usage, the number of courses and credit is high. Whereas for the low category are those (students) who are not targeted for assistance, this category has a minimum use of internet data, few courses and credits, and has high economic capacity and data purchasing.

### 2.2. Sensitivity Decision Making Analysis Data

The sensitivity of data analysis in decision making is influenced by many factors, in this study discusses the sensitivity of normalized data analysis. In general, normalization in MCDM is a transformation process to obtain numerical input data and comparable using the same scale[5], [7]. Normalization techniques map attributes (criteria) with different units of measurement to a common scale in the interval :0-1.

The MADM methods determines how attribute information is processed to arrive at a choice, requiring comparisons between and between attributes, and involves appropriate explicit exchanges. Each decision matrix (decision table)in MCDM method has four main parts, i.e: (a) alternatives, (b) attributes, (c) weight or relative importance of each attribute, and (d) alternative performance measures with sets by attribute[8].

Several studies on the normalization matrix as in[9] examine the influence of normalization techniques in ranking: Improving the materials selection process in engineering design. Normalisation affects the results of MADM methods in [4], Data normalisation techniques in decision making with TOPSIS method[3], Comparative analysis of normalization procedures in TOPSIS method: With an application to Turkish deposit banking market[10], etc. The linear normalization (LN) data sensitivity analysis we described it using the VIKOR method, and simple normalization (SN) data sensitivity was observed using SAW. The equations for the normalization method are presented in Table 2.

Table 2: The Normalization Equation for SN, LN, and VN

Attribute	Max	Min
Simple (SN)	$r_{ij} \frac{a_{ij}}{a_j^{Max}}$	$r_{ij} \frac{a_{ij} - a_j^{Min}}{a_j^{Max} - a_j^{Min}}$
Linear (LN)	$r_{ij} \frac{a_j^{Min}}{a_j}$	$r_{ij} \frac{a_j^{Max} - a_{ij}}{a_j^{Max} - a_j^{Min}}$

### 3. Experimental Methods

#### 3.1. Research Design

An overview of the research design is presented in Figure 1.

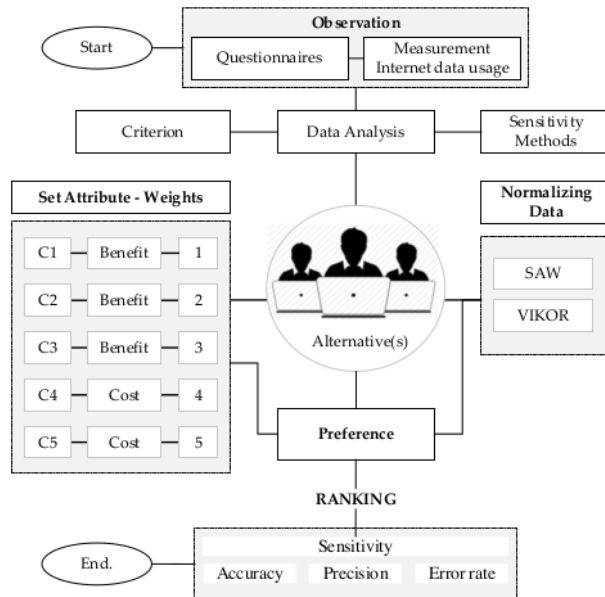


Figure 1: Research Design for Sensitivity Data Analysis Methods

#### 3.2. Observation

Data collection methods through observation activities, i.e. measuring data to determine the amount of student internet data usage, and questionnaires to obtain information on the number of courses and credits, and the economic capacity and purchasing power of students. The data collection was carried out at the peak of the Covid-19 pandemic. The results of the observation activities form the basis for determining the criteria for assistance. The population of research observations of 400 students is all students in the Informatics department, Mulawarman University who carry out online learning activities, and become an alternative to the target of internet data assistance.

#### 3.3. Criterion Weighting

The criteria data for making decision assistance from the results of observation activities obtained five criteria for decision making; Use of Internet Data (C1), Learning Courses (C2), Credit Courses (C3), Economic Capability (C4) and data purchasing power (C5). The weighting method the criteria and attribute set used the Rank Sum weighting technique which refers to the research of Mats Danielson and L. Ekenberg[11] using the equation:

$$w_i^{RS} = \frac{N+1-i}{\sum_{j=1}^N (N+1-j)} \quad (3)$$

Denote the ranking number  $i$  among  $N$  items to rank, a larger weight is assigned to lower-ranking numbers[11]. Furthermore, from the calculation of equation (3), the criteria weight values are obtained and include the attributes shown in Table 3.

Table 3: The Criterion Weighting and Attribute

Criteria	Straight rank ( $r_j$ )	Sum Rank weight ( $n - r_j + 1$ )	Normalized weight	Attribute
C1	1	$5-1+1=5$	0.333	Max
C2	2	$5-2+1=4$	0.267	Max
C3	3	$5-3+1=3$	0.200	Max
C4	4	$5-4+1=2$	0.133	Min
C5	5	$5-5+1=1$	0.067	Min

Attribute set for the criteria of Use of Internet Data (C1), Subjects of Learning (C2), Credit Courses (C3) are set to benefit attributes (Max) with Straight ranks and Economic Capability (C4) and Purchasing Power Data (C5) set Cost attribute (Min).

#### 3.4. Sensitivity Data Analysis

Data analysis methods for decision making focuses on SAW for SN and VIKOR for LN. The general description of the data analysis flows is seen in Figure 2.

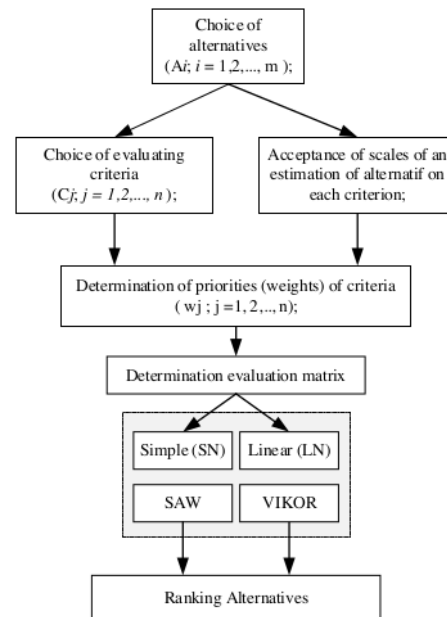


Figure 2: The Data Analysis Flow

The step-by-step sequence of the problem of multi-criteria decision making for data normalization analysis refers to [8], [12], is defined in Figure 2.

Simple Normalization (SN) performance description is illustrated using the SAW method referring to [13], [14], the equation:

$$p_i = \sum_{j=1}^m w_j r_{ij} \quad (4)$$

Where  $p_i$  is the performance value or preference value of the alternative to -  $i$ ;  $w_j$  denotes the weight of the  $j$ th criterion;  $r_{ij}$  is the normalized rank selected from the  $i$ th alternative against the  $j$  is criterion to be the equivalent unit.

Linear Normalization (LN) performance description is illustrated using the VIKOR method referring to [15] the equation:

$$Q_1 = v \left[ \frac{(s_l - s^{max})}{(s^{max} - s^{min})} \right] + (1 - v) \left[ \frac{(r_l - r^{max})}{(r^{max} - r^{min})} \right] \quad (5)$$

V is the weight ranging from 0-1 (generally 0.5). The value of v is the weight value of the strategy of the maximum group utility, while the value of 1 - v is the weight of individual regret. The smaller the VIKOR index value (Q<sub>i</sub>) the better the alternative solution.

### 3.5. Confusion Matrix

Confusion matrix is used to measure the performance of SN, LN and VN data normalization methods. In this test, the reference results of the 3 methods are compared with actual data, ie. alternative data which is the priority for internet data assistance, in the high category. In measuring the performance of these three methods, there are 4 (four) terms referring to [16] as a representation of the results of the performance process, ie. True Potential Positive Assitance (TPP), True Potential Negative (TPN), False Potential Positive (FPP) and False Potential Negative (FPN)[17]. Measurement values for sensitivity, accuracy, precision and missclassification (error rate) refer to [18], [14] as follows:

$$Sensitivity = \frac{TPP}{FPN+TPP} 100\% \quad (6)$$

$$Accuracy = \frac{TPP+TPN}{TOTAL} 100\% \quad (7)$$

$$Precision = \frac{TPP}{FPN+TPP} 100\% \quad (8)$$

$$Error Rate = \frac{FPP + FPN}{TOTAL} 100\% \quad (9)$$

## 4. Results and Discussion

### 4.1. Description Data Analysis

- Alternative and criteria data

Research data was obtained through observation activities in the form of measuring internet data during online learning (C1) and filling out questionnaire forms (C2, C3, C4, C5), obtained from 400 undergraduate students dept. of informatics, Mulawarman University, Indonesia as an alternative in decision making or potential beneficiaries. Description of this data is shown in Table 4.

Table 4: description data analysis

Alts.	C1	C2	C3	C4	C5
A1	926.18	9	24	1,800,000	100,000
A2	690.96	9	23	1,850,000	100,000
A3	849.73	9	19	3,850,000	300,000
A4	1,002.07	9	23	1,350,000	100,000
A5	1,005.88	9	24	1,450,000	100,000
A↓	⋮	⋮	⋮	⋮	⋮
A399	1,002.31	9	23	1,200,000	100,000
A400	798.77	9	18	3,000,000	500,000
Avg.	749.21	7	20	2,133,113	237,000
Min.	490.560	5	14	1,000,000	100,000

Max.	1,130.17	9	24	4,000,000	500,000
------	----------	---	----	-----------	---------

1

Data analysis (datasheet) in Table 4, then arranged in a decision matrix containing the value of each alternative A1 to A400, the average value for C1 is 749.21 MB, C2 is an average of 7 courses, for C3 an average of 20 credits subjects, C4 an average of IDR 2,133,113 and C5 an average of IDR 237,000. While the minimum - max value obtained is 490,560 MB - 1,130,170 MB of internet data usage (C1), 5 - 9 number of courses (C2), 14 - 24 credits of courses (C3), IDR 1,000,000 - IDR 4,000,000 economic ability (C4), and IDR 100,000 - IDR 500,000 for C5.

### 4.2. Result: Normalization Data Analysis

- Result: Normalization Data Simple

Normalized data analysis for a simple technique using equation (1) calculating the min and max, the value of each alternative (A1 to A400) is obtained as shown in Table 5.

Table 5: Normalization Data SAW Method

Alts.	r <sub>1ij</sub> (C1)	r <sub>2ij</sub> (C2)	r <sub>3ij</sub> (C3)	r <sub>4ij</sub> (C4)	r <sub>5ij</sub> (C5)
A1	0.819	1.0	1.0	0.555	1.0
A2	0.611	1.0	0.958	0.540	1.0
A3	0.751	1.0	0.791	0.259	0.33
A4	0.886	1.0	0.958	0.740	1.0
A5	0.890	1.0	1.0	0.689	1.0
A↓	⋮	⋮	⋮	⋮	⋮
A399	0.886	1.0	0.958	0.833	1.0
A400	0.706	1.0	0.7	0.333	0.2
Avg.	0.663	0.830	0.842	0.509	0.578
Min.	0.434	0.556	0.583	0.250	0.200
Max.	1.000	1.000	1.000	1.000	1.000

The calculation results (Table 5) of normalized data analysis using simple techniques, which are illustrated using the SAW method, the value of the simple technique 1 is obtained with an average of 0.663 for the sample results on C1 with a min value of 0.434 and a max value of 1.0, for C2, an average value of 0.830 (with min 0.556 - max 1.0) was obtained, C3 an average of 0.842 (min 0.583 - max 1.0), C4 an average of 0.509 (min 0.250 - max 1.0) and for C5 an average of 0.578 with a min 0.2 - 1.0.

- Result: Normalization Linear Data

Normalized data analysis for a linear technique using equation (1) calculating the min and max, the value of each alternative (A1 to A400) is obtained as shown in Table 6.

Table 6: Normalization Data VIKOR method

Alts.	r <sub>1ij</sub> (C1)	r <sub>2ij</sub> (C2)	r <sub>3ij</sub> (C3)	r <sub>4ij</sub> (C4)	r <sub>5ij</sub> (C5)
A1	0.681	1.000	1.000	0.733	1.000
A2	0.313	1.000	0.900	0.717	1.000
A3	0.562	1.000	0.500	0.050	0.500
A4	0.800	1.000	0.900	0.883	1.000
A5	0.806	1.000	1.000	0.850	1.000
A↓	⋮	⋮	⋮	⋮	⋮
A399	0.80	1.00	0.90	0.93	1.00

A400	0.48	1.00	0.40	0.33	0.00
Avg.	0.4044	0.6181	0.6213	0.6223	0.6575
Min.	0.000	0.000	0.000	0.000	0.000
Max.	1.000	1.000	1.000	1.000	1.000

The calculation results (Table 6) from normalized data analysis using a linear technique illustrated by the VIKOR method obtained a linear technique value with an average of 0.4044 for C1, for C2 an average value 0.6181, C3 was 0.6213, C4 was average. 0.6223 and for C5 the average is 0.6575. While the min and max values for each data criterion are at 0.0 - 1.0.

Furthermore, the visualization of the data spread for simple and linear normalized data technique is shown in Figure 3.

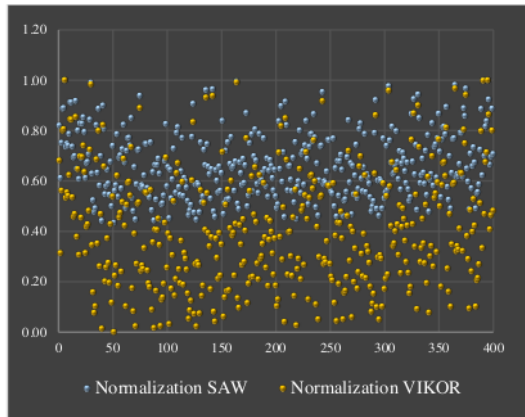


Figure 3. Scatter-chart Data Normalization SAW-VIKOR

Figure 3 presents a simple technique data spread visualization showing the central area of the spread data for C1 range of 0.434 to 1.0. Meanwhile, the linear technique shows a distribution area of 0.0 to 1.0.

### 4.3. Preference and Ranking

- Preference value (P)

The preference value (P) for SAW method according to (3), for VIKOR using (4). The calculation results for each alternative (A) are shown in Table 7.

Table 7: Preference Value SAW and VIKOR

Alts.	Simple Norm.	Linear Norm.
	SAW	VIKOR
A1	0.880576	0.918040
A2	0.800864	0.827270
A3	0.732474	0.752377
A4	0.919317	0.942831
A5	0.921962	0.953826
A6	0.973333	1.000000
A7	0.789162	0.844602
A8	0.849240	0.885965
A9	0.816799	0.875406
A10	0.874123	0.908853

A11	0.936147	0.964779
A12	0.925985	0.960283
A13	0.870899	0.897269
A14	0.792028	0.849121
A15	0.800388	0.855517
A16	0.909380	0.951475
A17	0.756221	0.804077
A18	0.813499	0.871147
A↓	⋮	⋮
A399	0.931733	0.947088
A400	0.710034	0.725979

Table 7 is the preference value of the simple (SAW) and linear (VIKOR) calculation of 400 alternatives, which is the final result of the assessment of the criteria and weighting values of students who are prospective recipients of internet data social assistance. Furthermore, the visualization of the spread of preference data from the SAW and VIKOR methods is shown in Figure 4.

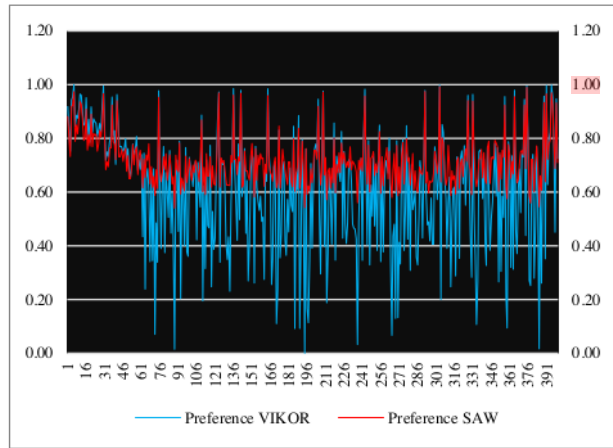


Figure 4. Chart Preference Value SAW and VIKOR Method

Figure 4 shows a graph of the spread data preferences from the SAW method in the area 0.5408 - 0.9921 and the VIKOR method in the 0.0 - 1.0 area.

- Ranking

The calculation results of preferences are then sorted from largest to smallest, where the largest alternative preference value is the best alternative from the data which is the chosen alternative, while the alternative with the lowest preference value is the worst of the alternatives as shown in Table 8.

Table 8: Ranking SAW and VIKOR Method

SAW Method				VIKOR Method			
Rank	Alts.	Rank	Alts.	Rank	Alts.	Rank	Alts.
1 <sup>st</sup>	A304	21 <sup>st</sup>	A399	1 <sup>st</sup>	A6	21 <sup>st</sup>	A389
2 <sup>nd</sup>	A375	22 <sup>nd</sup>	A12	2 <sup>nd</sup>	A395	22 <sup>nd</sup>	A357
3 <sup>rd</sup>	A292	23 <sup>rd</sup>	A37	3 <sup>rd</sup>	A304	23 <sup>rd</sup>	A5
4 <sup>th</sup>	A6	24 <sup>th</sup>	A373	4 <sup>th</sup>	A391	24 <sup>th</sup>	A37
5 <sup>th</sup>	A209	25 <sup>th</sup>	A357	5 <sup>th</sup>	A30	25 <sup>th</sup>	A396
6 <sup>th</sup>	A395	26 <sup>th</sup>	A396	6 <sup>th</sup>	A375	26 <sup>th</sup>	A16

7 <sup>th</sup>	A124	27 <sup>th</sup>	A5	7 <sup>th</sup>	A136	27 <sup>th</sup>	A399
8 <sup>th</sup>	A142	28 <sup>th</sup>	A4	8 <sup>th</sup>	A164	28 <sup>th</sup>	A205
9 <sup>th</sup>	A30	29 <sup>th</sup>	A205	9 <sup>th</sup>	A243	29 <sup>th</sup>	A373
10 <sup>th</sup>	A391	30 <sup>th</sup>	A16	10 <sup>th</sup>	A365	30 <sup>th</sup>	A4
11 <sup>th</sup>	A136	31 <sup>st</sup>	A20	11 <sup>th</sup>	A142	31 <sup>st</sup>	A1
12 <sup>th</sup>	A164	32 <sup>nd</sup>	A1	12 <sup>th</sup>	A292	32 <sup>nd</sup>	A20
13 <sup>th</sup>	A243	33 <sup>rd</sup>	A10	13 <sup>th</sup>	A75	33 <sup>rd</sup>	A29
14 <sup>th</sup>	A365	34 <sup>th</sup>	A13	14 <sup>th</sup>	A209	34 <sup>th</sup>	A10
15 <sup>th</sup>	A75	35 <sup>th</sup>	A110	15 <sup>th</sup>	A124	35 <sup>th</sup>	A13
16 <sup>th</sup>	A327	36 <sup>th</sup>	A29	16 <sup>th</sup>	A11	36 <sup>th</sup>	A110
17 <sup>th</sup>	A41	37 <sup>th</sup>	A8	17 <sup>th</sup>	A331	37 <sup>th</sup>	A8
18 <sup>th</sup>	A331	38 <sup>th</sup>	A173	18 <sup>th</sup>	A41	38 <sup>th</sup>	A189
19 <sup>th</sup>	A11	39 <sup>th</sup>	A42	19 <sup>th</sup>	A12	39 <sup>th</sup>	A9
20 <sup>th</sup>	A389	40 <sup>th</sup>	A189	20 <sup>th</sup>	A327	40 <sup>th</sup>	A22

Table 8, there are 40 alternative ranking preference results from the two methods (SAW and VIKOR). Each method produces a different ranking of values, the SAW method produces an alternative A304 with a preference value of 0.9921 in the first place, A375, A292 in the second and third, and so on. Then, the results of the ranking preference Vikor method obtained the first alternative A6, A395 in the second, A304 third, and so on (see Table 8 and Figure 5).

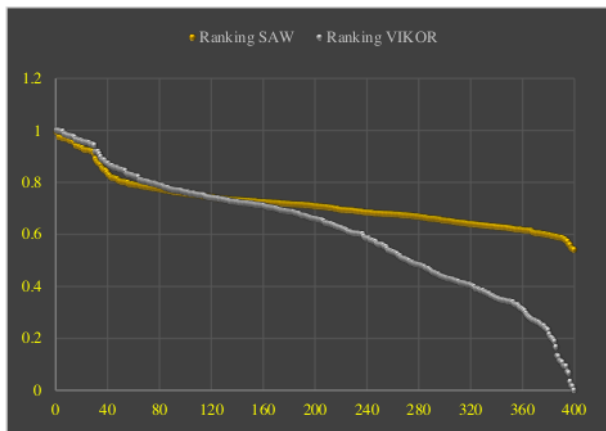


Figure 5. The Ranking of SAW vs VIKOR method

The difference in the value of the two methods in decision making in individual ranking is caused by different the normalization data analysis methods, where in the SAW method the Simple Normalization (SN) method is applied, and the VIKOR method uses Linear Normalization (LN), although the weighting of the criteria is of the same importance and straight weights.

#### 4.4. Confusion Matrix: Sensitivity Data Analysis

Sensitivity data analysis uses a confusion matrix to determine the sensitivity, accuracy, precision, and misclassification of the ranking values. for that, we use actual data as an internal validation of the performance of each method. The testing scenario is carried out by dividing the percentage of alternative aid targets as the target number at 10%, 15%, 20% and 25% (40 alt; 60 alt; 80 alt; and 100 alt.) Who are potential recipients of social assistance, this is to see the sensitivity of the decision method to targeting per group of alternatives.

Table 9: Actual Data vs SAW and VIKOR Rank Methods

Actual Data		SAW method		VIKOR method	
Order	Alts.	Ranking	Valid	Ranking	Valid
1 <sup>st</sup>	A124	A304	1	A6	1
2 <sup>nd</sup>	A209	A375	1	A395	1
3 <sup>rd</sup>	A292	A292	1	A304	1
4 <sup>th</sup>	A304	A6	1	A391	1
5 <sup>th</sup>	A375	A209	1	A30	1
6 <sup>th</sup>	A6	A395	1	A375	1
7 <sup>th</sup>	A30	A124	1	A136	1
8 <sup>th</sup>	A142	A142	1	A164	1
9 <sup>th</sup>	A395	A30	1	A243	1
10 <sup>th</sup>	A41	A391	1	A365	1
11 <sup>th</sup>	A75	A136	1	A142	1
12 <sup>th</sup>	A136	A164	1	A292	1
13 <sup>th</sup>	A164	A243	1	A75	1
14 <sup>th</sup>	A243	A365	1	A209	1
15 <sup>th</sup>	A389	A75	1	A124	1
16 <sup>th</sup>	A391	A327	1	A11	1
17 <sup>th</sup>	A399	A41	1	A331	1
18 <sup>th</sup>	A11	A331	1	A41	1
19 <sup>th</sup>	A37	A11	1	A12	1
20 <sup>th</sup>	A327	A389	1	A327	1
21 <sup>st</sup>	A365	A399	1	A389	1
22 <sup>nd</sup>	A373	A12	1	A357	1
23 <sup>rd</sup>	A4	A37	1	A5	1
24 <sup>th</sup>	A5	A373	1	A37	1
25 <sup>th</sup>	A12	A357	1	A396	1
26 <sup>th</sup>	A16	A396	1	A16	1
27 <sup>th</sup>	A205	A5	1	A399	1
28 <sup>th</sup>	A331	A4	1	A205	1
29 <sup>th</sup>	A357	A205	1	A373	1
30 <sup>th</sup>	A396	A16	1	A4	1
31 <sup>st</sup>	A29	A20	1	A1	1
32 <sup>nd</sup>	A1	A1	1	A20	1
33 <sup>rd</sup>	A23	A10	1	A29	1
34 <sup>th</sup>	A8	A13	1	A10	1
35 <sup>th</sup>	A10	A110	0	A13	1
36 <sup>th</sup>	A13	A29	1	A110	0
37 <sup>th</sup>	A19	A8	1	A8	1
38 <sup>th</sup>	A20	A173	0	A189	0
39 <sup>th</sup>	A22	A42	0	A9	0
40 <sup>th</sup>	A28	A189	0	A22	1
Sum			36		37

Table 9 is an example of testing actual data for 40 alternatives out of a total of 400 alternatives (10%) that were targeted for selecting the SAW and VIKOR methods. The results are compared to then measure the confusion matrix. The comparison results in Table 9 validate the data from the 2 ranking methods against the actual data, then perform performance calculations. Table 9 presents the method performance results for the 10% target or 40 alternatives.

Table 20: The Confusion Matrix Decision Analysis for SAW Method

		SAW Method		
		Predicted: NO	Predicted: YES	
Actual Data	Actual: NO	TPN = 320	FPP = 40	360
	Actual: YES	FPN = 4	TPP = 36	40
		324	76	

From Table 10, the performance value for SAW method:

- Sensitivity using(6):  $\rightarrow 36/40 = 0.9 = 90\%$
- Accuracy using(7):  $\rightarrow (320 + 36) / 400 = 0.890 = 89,0\%$
- Precision using(8):  $\rightarrow 36/(36+40) = 0.474 = 47,4\%$
- Error rate using(9):  $\rightarrow (40+4)/400 = 0.110 = 11,0\%$

Table 31: The Confusion Matrix Decision Analysis for Vikor Method

		SAW Method		
		Predicted: NO	Predicted: YES	
Actual Data	Actual: NO	TPN = 320	FPP = 40	360
	Actual: YES	FPN = 3	TPP = 37	40
		323	77	

From Table 11, the performance value for Vikor method:

- Sensitivity using(6):  $\rightarrow 37/40 = 0.925 = 92,5\%$
- Accuracy using(7):  $\rightarrow (320 + 37) / 400 = 0.893 = 89,3\%$
- Precision using(8):  $\rightarrow 37/(37+40) = 0.481 = 48,1\%$
- Error rate using(9):  $\rightarrow (40+3)/400 = 0.108 = 10,8\%$

Table 42: The Summary Scenario Results: Method Performance vs Actual Data

Metric	SAW Method				VIKOR Method			
	10%	15%	20%	25%	10%	15%	20%	25%
Sensitivity	90.0	80.0	80.0	75.0	92.5	76.7	80.0	79.0
Accuracy	89.0	82.0	76.0	68.75	89.3	81.5	76.0	69.76
Precision	47.4	44.4	44.4	42.9	48.1	43.4	44.4	44.1
Error rate	11.0	18.0	24.0	31.25	10.75	18.5	24.0	30.25

The summary of the performance measurement data from the percentage set scenario for the target alternative group is shown in Table 12.

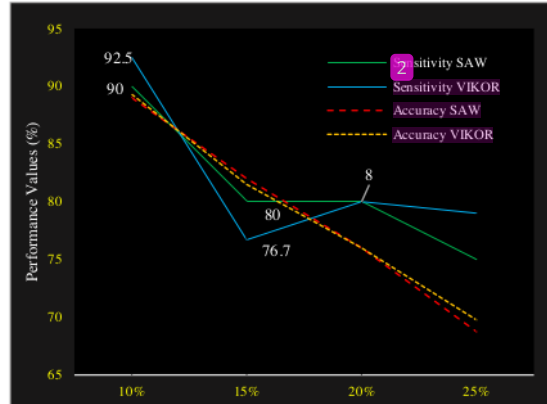


Figure 6. Sensitivity and Accuracy Methods – SAW vs VIKOR

Figure 6 shows a line-chart of the sensitivity and accuracy values of the SAW and VIKOR methods, the sensitivity in determining targets results in different performance values, at the 20% target (40 targets) the Vikor method is 1 alternative higher than SAW, meaning that Vikor's sensitivity value for target 40 people with a sensitivity of 0.925 or 92.5% while SAW was 90%. However, when the target was increased by 15%, (60 targets) the SAW method was more sensitive than VIKOR, with a ratio of 48:46 or about 80% SAW: 76.7% VIKOR. When the target is increased by 80 people (20%), both methods have the same performance value for each metric (sensitivity, accuracy, precision and error rate), SAW and VIKOR.

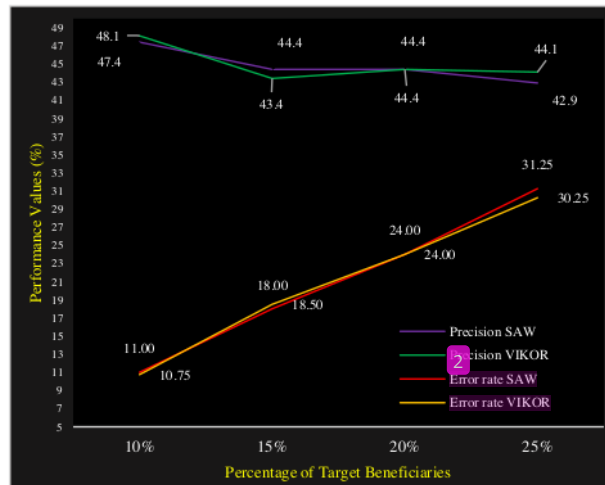


Figure 7. Precision and error rate value method SAW – VIKOR

Figure 7 shows the error rate value has increased linearly and simultaneously with an average increase of 7 points. and the value of precision is influenced by the sensitivity value decreases. In principle, both the SAW and VIKOR methods are included in the linear analysis model, and this result is influenced by the weighted value setting assigned to the criteria.

#### 4.5. Discussion

This work also demands sensitivity in examining the details of the data and must be careful to look at every detail of the values



that exist. The two methods used have their own characteristics in terms of sensitivity in the analysis of social assistance program data. From the results of the analysis of the previous method shows fundamental differences, it becomes our important point when carrying out this work, the findings include:

The data normalization analysis process, the results obtained show the distribution of values in the SAW method (see: Figure 3) which explains that the results of data normalization are coherent (dependent) in the value range [0.4 - 1.0], while in the VIKOR method, the results of data normalization are independent of the range [0.9–1.0]. This explains that the spread of the results of the integrated SAW analysis normalization shows fierce competition in the selection, and will also have a significant effect on the performance (preference) of the SAW method. The benefit is that it is suitable for use in the case of group selection (10%, 15%, 20%, 25%).

The process of analyzing the performance of the social assistance data sensitivity also shows differences in determining the selection of positive beneficiaries, the VIKOR method has a higher sensitivity value than the SAW method if the alternative target is chosen by 40 students (10%), this can be seen from a higher preference value (see Figure 6). However, under certain conditions or when the target recipient of social assistance is increased (target 15%), the performance gradually decreases, the SAW method is higher. This is based on the results of observations caused by the distribution of the normalized values of VIKOR data in the distribution range of 0 to 1, and the distribution of data (preference values) of the SAW method is mostly centred in the lowest distribution area of 0.5408 to 0.9921. In other data analysis also obtained the same performance value, namely when the target beneficiary target is increased (20% target), and the addition of the target 25% target (100 alt) shows that the performance of the VIKOR method increases linearly better than the performance of the SAW method. This means that the characteristics of these two methods are different and experience changes in preference values caused by the different value distribution of the two Normalized Data techniques. In addition, the important point of this study is the sensitivity value of normalized data techniques in the decision-making process based on the number of target alternatives for social assistance and the total alternatives.

## 5. Conclusion

Decision making related to social assistance for community welfare requires good management because a slight change or error in determining the analytical method approach has a significant impact on the results, this is explained from the work carried out showing the sensitivity of simple techniques and linear techniques for normalized data in decision making.

The results of this study are based on the characteristics obtained from the two methods providing conclusions for new research for the author to explore further, namely, there are differences in the final rating (preference) value of the target size, and this occurs because of the influence of the characteristics of the data distribution of each. normalized techniques, for cases with a target <10% Linear techniques illustrated using the VIKOR method have a high degree of accuracy compared to simple techniques illustrated using the SAW method. However, if the target number of social assistance recipients is in the range >10%

[www.astesj.com](http://www.astesj.com)

to 15% (60 alt from 400 alt), then the SAW method has a good performance, and the results of these observations are due to the distribution of data focused on certain areas. (preference value) of simple techniques that affect performance. That is, the use of Linear Normalization data technique is very good for decision making cases with small targets because it produces the right ranking performance compared to simple data normalization techniques.

## Conflict of Interest

The authors declare no conflict of interest related to this paper

## Acknowledgment

Research funding comes from the Higher Education Operational Assistance Fund (BOPTN) Department of Informatics, Faculty of Engineering, Mulawarman University, Indonesia.

## References

- [1] Unicef, WHO, IFRC, Key Messages and Actions for Prevention and Control in Schools.
- [2] PP, Peraturan Pemerintah Republik Indonesia Nomor 21 Tahun 2020, 2020.
- [3] N. Vafaei, R.A. Ribeiro, L.M. Camarinha-Matos, Data normalisation techniques in decision making: Case study with TOPSIS method, *International Journal of Information and Decision Sciences*, 2018, doi:10.1504/IJIDS.2018.090667.
- [4] D. Pavlicic, "Normalisation affects the results of MADM methods," *Yugoslav Journal of Operations Research*, 2001.
- [5] N. Vafaei, R.A. Ribeiro, L.M. Camarinha-Matos, "Normalization techniques for multi-criteria decision making: Analytical hierarchy process case study," in *IFIP Advances in Information and Communication Technology*, 2016, doi:10.1007/978-3-319-31165-4\_26.
- [6] E. Budiman, "Mobile Data Usage on Online Learning during COVID-19 Pandemic in Higher Education," *International Journal of Interactive Mobile Technologies (IJIM)*, **14**(19), 2020, doi:10.3991/ijim.v14i19.17499.
- [7] N. Vafaei, R.A. Ribeiro, L.M. Camarinha-Matos, "Importance of Data Normalization in Decision Making: case study with TOPSIS method," in *International Conference of Decision support Systems Technology, An EWG-DSS Conference. Them: Big Data Analytic for Decision Making*, 2015.
- [8] I. Mukhametzyanov, D. Pamučar, "A Sensitivity analysis in MCDM problems: A statistical approach," *Decision Making: Applications in Management and Engineering*, 2018, doi:10.31181/dmame.1802050m.
- [9] A. Jahan, K.L. Edwards, A state-of-the-art survey on the influence of normalization techniques in ranking: Improving the materials selection process in engineering design, *Materials and Design*, 2015, doi:10.1016/j.matdes.2014.09.022.
- [10] A. Çelen, "Comparative analysis of normalization procedures in TOPSIS method: With an application to Turkish deposit banking market," *Informatica (Netherlands)*, 2014, doi:10.15388/Informatica.2014.10.
- [11] M. Danielson, L. Ekenberg, "Trade-offs for ordinal ranking methods in multi criteria decisions," in *Lecture Notes in Business Information Processing*, 2017, doi:10.1007/978-3-319-52624-9\_2.
- [12] E. Triantaphyllou, "Multi-criteria Decision Making Methods: A Comparative Study (Applied Optimization)," in *Multi-Criteria Decision Making Methods: A Comparative Study*, 2000, doi:10.1007/978-1-4757-3157-6.

- [13] E. Budiman, N. Degen, Haviluddin, W. Indrawan, "Integrated multi criteria decision making for a destitute problem," in 2017 3rd International Conference on Science in Information Technology (ICSITech), IEEE, Bandung: 342–347, 2017, doi:10.1109/ICSITech.2017.8257136.
- [14] M. Wati, N. Novirasari, E. Budiman, Haeruddin, "Multi-Criteria Decision-Making for Evaluation of Student Academic Performance Based on Objective Weights," in 2018 Third International Conference on Informatics and Computing (ICIC), IEEE, Palembang: 1–5, 2018, doi:10.1109/IAC.2018.8780421.
- [15] P. Chatterjee, S. Chakraborty, "A comparative analysis of VIKOR method and its variants," Decision Science Letters, 2016, doi:10.5267/j.dsl.2016.5.004.
- [16] E. Budiman, Haviluddin, N. Degan, A.H. Kridalaksana, M. Wati, Purnawansyah, "Performance of Decision Tree C4.5 Algorithm in Student Academic Evaluation," in *Lecture Notes in Electrical Engineering*, Springer Verlag.: 380–389, 2018, doi:10.1007/978-981-10-8276-4\_36.
- [17] K.M. Ting, Confusion Matrix, 2017, doi:10.1007/978-1-4899-7687-1\_50.
- [18] S. Narkhede, Understanding Confusion Matrix – Towards Data Science, Towards Data Science, 2018.

# replyLetter-1[20M-10-957]-Revision1\_maindocument-1[20m-10-957]-original\_journal manuscript format ms office 2007-2019 - submit

## ORIGINALITY REPORT

6%

SIMILARITY INDEX

2%

INTERNET SOURCES

3%

PUBLICATIONS

2%

STUDENT PAPERS

## PRIMARY SOURCES

1	Submitted to King Mongkut's University of Technology Thonburi Student Paper	2%
2	Submitted to Thammasat University Student Paper	1%
3	<a href="http://www.scilit.net">www.scilit.net</a> Internet Source	1%
4	Submitted to Universidade Nova De Lisboa Publication	1%
5	Salim Saay, Tiziana Margaria. "XMDD as Key Enabling Technology for Integration and Organizational Collaboration: Application to E-Learning Based on NRENs", Advances in Science, Technology and Engineering Systems Journal, 2021 Student Paper	<1%

---

6

stacks.stanford.edu

Internet Source

<1 %

---

7

Submitted to Universidade Nova De Lisboa

Student Paper

<1 %

---

---

Exclude quotes Off

Exclude matches Off

Exclude bibliography Off