

International Journal of Sustainable Development and Planning

13

Country [United Kingdom](#) ·  [SIR Ranking of United Kingdom](#)

Subject Area and Category [Energy](#)
[Renewable Energy, Sustainability and the Environment](#)

[Environmental Science](#)
[Management, Monitoring, Policy and Law](#)

[Social Sciences](#)
[Geography, Planning and Development](#)

Publisher [International Information and Engineering Technology Association](#)

Publication type [Journals](#)

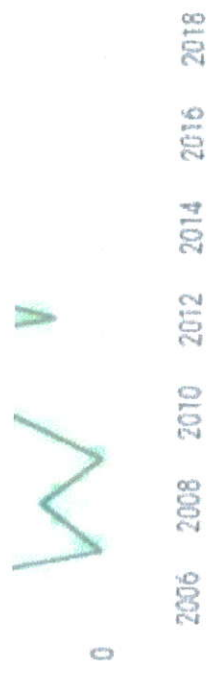
ISSN [1743761X, 17437601](#)

Coverage [2006-2020](#)

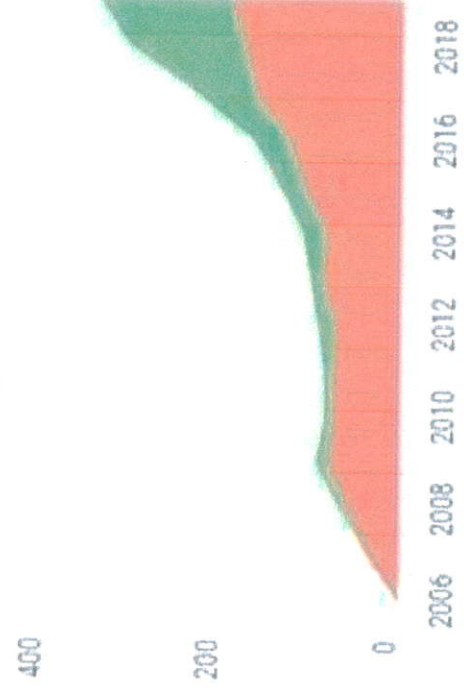
Scope [Information not localized](#)

H Index

 [Join the conversation about this journal](#)



● Citable documents
 ● Non-citable documents
 ● Cited documents
 ● Uncited documents
 +



← Show this widget in your own website

International Journal of Sustainable Development...

03

Geography, Planning and Development

best quartile

SJR 2019

0.22

Just copy the code below and paste within your html code.

```
<a href="https://www.scimagoj.com"
```

Powered by scimagojr.com



Scopus Preview

Dashboard Author search Sources



Source details

Feedback >

Complete request >

International Journal of Sustainable Development and Planning

Scopus coverage years: from 2006 to Present

Publisher: International Information and Engineering Technology Association

ISSN: 1743-7601 E-ISSN: 1743-761X

Subject area:

Social Sciences: Geography, Planning and Development

Environmental Science: Management, Monitoring, Policy and Law

Energy: Renewable Energy, Sustainability and the Environment

[View all documents](#)

[Save document list](#)

[Save to source list](#) [Journal Homepage](#)

CiteScore 2019

1.4



[Add CiteScore to your site](#)

SJR 2019

0.219



SNIP 2019

0.400



CiteScore CiteScore rank & trend Scopus content coverage

International Journal of Sustainable Development and Planning

Register Login

Search

Current Archives About

[Home](#) / [Login](#)

Username *

Password *

[Forgot your password?](#)

Keep me logged in

[Register](#)

SPATIAL INTERACTION BETWEEN REGIONS

Dio Caisar Darma

- [Submission](#)
- [Review](#)
- [Copyediting](#)
- [Production](#)

Round 1

Round 1 Status

Awaiting responses from reviewers.

Review Discussions

Name

[Withdrawal script \(revise of article\)](#)

[Add discussion](#)

Replies

Closed

Last Reply

dio-123_dio456

Aug/06

dio-123_dio456

Aug/05

dio-123_dio456

Aug/26

1

0

Withdrawal script (revise of article)

Participants [Edit](#)

vivienne liu (zyl)

Mr Dio Caisar Darma (dio-123_dio456)

Messages

Note

Kindly regards

 dio-123_dio456, Author, IJSDP Template_Wijaya et al_2020.docx

 New revisions

 dio-123_dio456, Author, IJSDP Template_Wijaya et al_revise at Auguts 6, 2020.docx

From
dio-123_dio456
Aug 05
dio-123_dio456
Aug 06

[Add Message](#)



[Pesan dipotong] [Lihat seluruh email](#)

3 Lampiran • Dipindai dengan Gmail

 IJSDP Template.d...
 IJSDP-6180.docx
 [sdp] 6180-com...



dio caisar <diocaisar09@gmail.com>
kepada editor.ijsdp ▾

5 Jun 2020 01:48 ☆ ↶ ⋮

Dear EDITOR,

Thanks for the information, by the way, can we get information about the APC for publishing?

Success

IJSDP

- > About
- > Aims and Scope

Spatial Interaction Between Regions: Study of the East Kalimantan Province, Indonesia

Adi Wijaya | Surya Dama | Dio Caesar Darma
Corresponding Author Email: ujadama60@gmail.com

Page: 937-950 DOI: <https://doi.org/10.18280/ijsdp.150618>
Received: 21 June 2020 Accepted: 16 August 2020 Published: 1 September 2020

Citation

- > Instructions for Authors

- > Article Processing Charge

- > Publication Ethics

- > Submission

- > Current Issue

- > Archive

- > Citation List



Username

Password

Remember me

LOGIN

Journal Content

All v

Browse

- By Issue
- By Title
- By Author
- Other Journals

Information

- For Readers
- For Authors
- For Librarians



Search

Abstract:

City morphology can be formed due to interaction either spatially or the socio-economic community in it. This study aims to determine the classification of fast-growing and growing quadrant areas in East Kalimantan Province, the central growth region and the highest relationship between spatial interactions between the growth centers and the hinterland region. The type of this research is quantitative descriptive research because this research is presented with numbers during 2014-2018. Data used is based on secondary data obtained from the site of the Central Statistics Agency and other related agencies. The analytical tool used is the Klassen Typology and Gravity Index, then processed using Microsoft Excel. The results of the empirical study show that there is one area in East Kalimantan Province that is classified as Quadrant I (Fast Forward and Growing Area), namely East Kutai Regency, and there are dominant seven regions classified in Quadrant III (Rapid Developing Areas), and none occupy Quadrant I (Disadvantaged Region). The area is the center of growth in East Kalimantan Province, namely Berau Regency. Meanwhile, Samarinda City with the highest spatial interaction (attractiveness and potential) with a growth center in Kutai Kartanegara Regency (hierarchy I).

Keywords:

quadrant regions, center for growth, spatial interaction, hinterland, attractiveness, potency, hierarchy