

PROGRAM BOOK

The 17th



IRSA

Conference
Lombok 2022

BACKGROUND

The global COVID-19 outbreaks have had a variety of negative economic consequences, most notably a slowing of global economic growth in almost all countries. Contrast to the negative effects, there has been a positive environmental impact because of reduced human movement, particularly using motorized modes of transportation such as cars and planes, which has resulted in improved air quality. This could have a positive impact on health outcomes.

Indonesia, with its geographical composition of small islands, has prompted economic actors to be creative to survive in the pandemic COVID-19 era. Various efforts must be made by economic actors to improve economic conditions while taking sustainability factors into account in the framework of sustainable economic development.

Related to regional economic conditions in the post-pandemic era, known as the new normal, the Indonesian Regional Science Association (IRSA), which is part of the Regional Science Association International (RSAI), in collaboration with the Faculty of Economics and Business University of Mataram (FEB Unram) are organizing an international conference on the topic of **COVID-19 Disruption and Regional Development in Small Island Economies**.

This conference will serve as a forum for the exchange of ideas among various scientists who are expected to contribute positively to the revival of the regional economy, particularly on small islands. The outcomes of this international conference can be used as a guideline for regional and national economic policymaking, allowing regional and state economies to recover to pre-COVID-19 levels.

TABLE OF CONTENTS

BACKGROUND	1
TABLE OF CONTENTS	2
ABOUT THE IRSA INTERNATIONAL CONFERENCE	3
HOST AND ORGANIZERS	4
PARTNERS AND SPONSORS	5
TOPICS AND PARTICIPANTS	10
Topics	10
Expected Participants	11
CONFERENCE CONTENTS	12
Plenary Sessions	12
Parallel Sessions	12
PROGRAM OVERVIEW	13
PARALLEL SESSION OVERVIEW	15
DAY TO DAY PARALLEL SESSION PROGRAM	17
MONDAY, 18th JULY 2022	17
Parallel Session 1	17
Parallel Session 2	22
Parallel Session 3	25
Poster Session 1.....	31
Poster Session 2.....	31
TUESDAY, 19th JULY 2022	32
Parallel Session 4	32
Parallel Session 5	35
Parallel Session 6	38
CONFERENCE LOCATION	42
Google Maps	42
SITE MAPS	43
1 st Floor.....	43
2 nd Floor	44
3 rd Floor.....	45

ABOUT THE IRSA INTERNATIONAL CONFERENCE



It is an annual conference that promotes the advancement of research across the country. The conference will facilitate open discussions and debates, transfer of knowledge, strategies for policy formulation, and networking amongst scholars and policymakers. Each year since its establishment, the IRSA annual conference has been attended by many academics and policymakers from numerous Indonesian institutions. IRSA has also created a large network of academics and policymakers who are concerned with issues of regional development. This network has now reached a critical mass that can play a major role not only in the academic arena through research and publications but also contribute to the evidence-based regional development policies nationally, regionally, and locally.

HOST AND ORGANIZERS

The 17th IRSA International Conference is hosted and organized by the Faculty of Economics and Business University of Mataram in collaboration with the Indonesian Regional Science Association (IRSA).

THE
PROGRAM
BOOK



Faculty of Economics & Business
University of Mataram



PARTNERS AND SPONSORS



The
Australia-Indonesia
Centre

THE
PROGRAM
BOOK



Faculty of Economics & Business
University of Mataram



BI INSTITUTE

THE
PROGRAM
BOOK



Faculty of Economics & Business
University of Mataram



LPEM FEB UI
UNIVERSITAS INDONESIA



Australian Government

TNP2K



**Australian
National
University**



**Economic Research Institute
for ASEAN and East Asia**



THE
PROGRAM
BOOK



Faculty of Economics & Business
University of Mataram



PENJAMINAN & INFRASTRUKTUR

Guarantee & Infrastructure



Asosiasi
Asuransi Jiwa
Indonesia



J-PAL

ABDUL LATIF JAMEEL POVERTY ACTION LAB



BADAN KEBIJAKAN FISKAL

KEMENTERIAN KEUANGAN
REPUBLIK INDONESIA

TOPICS AND PARTICIPANTS



TOPICS

1. Social and economic impact of COVID-19
2. Regional Government Policy in dealing with COVID-19
3. SMEs development during the pandemic
4. Economic disruption
5. Health, human resources, and small island communities
6. Food security and malnutrition in small island communities
7. Livelihood, poverty, and regional disparity in small island communities
8. Tourism and creative industries in small islands
9. Economic digitalization
10. Local government innovation and governance
11. Trade, investment, and economic growth

EXPECTED PARTICIPANTS

1. Academics and researchers in various disciplines from both Indonesia and overseas.
2. Students from all Indonesian universities.
3. Government officials in Indonesia.
4. Non-Government Organizations.
5. Representative of international organizations
6. Interested parties from other economics and regional planning societies

CONFERENCE CONTENTS

Keynote Speaker

John Gibson (Professor of Economics, University of Waikato)

Plenary Sessions

The 17th IRSA Conference will hold two plenary sessions over two days with the following topics:

Plenary 1: COVID-19 Disruption

1. Alessandra Faggian (Director of Social Sciences and Vice Provost for Research, Gran Sasso Science Institute)
2. Fukunari Kimura (Chief Economist, Economic Institute for ASEAN and East Asia/ERIA)

Plenary 2: Small Island Economies

1. Amalia Adininggar Widnyasanti (Deputy for Economic Affairs, Ministry of National Development Planning/BAPPENAS)
2. Ida Aju (Daju) Resosudarmo (Research Fellow Crawford School of Public Policy, Australian National University).

Parallel Sessions

The 17th IRSA Conference will hold parallel sessions for presenters to present their papers.



PROGRAM OVERVIEW

DAY	TIME	EVENT	LOCATION
Saturday, 16 th July 2022	07.30- 17.30	Pre-Conference Workshop: Pelatihan Pengenalan Model Antar-Daerah Indoterm untuk Analisa Kebijakan Daerah by CEDS-Bappenas-GIZ	Aruna Grand Ballroom 3 rd floor Aruna Hotel & Resort
	08.00- 17.00	Pre-Conference Workshop: Impact Evaluation: Randomized Control Trial Method by J-PAL South-East Asia	Medana Meeting Room 2 nd floor Aruna Hotel & Resort
	08.00- 17.00	Pre-Conference Workshop: Economy-wide Approach to Policy Impact Evaluation by FEB UI	Malimbu Meeting Room 2 nd floor Aruna Hotel & Resort
Sunday, 17 th July 2022	08.00- 13.00	Pre-Conference Workshop: Pelatihan Pengenalan Model Antar-Daerah Indoterm untuk Analisa Kebijakan Daerah by CEDS-Bappenas-GIZ	Aruna Grand Ballroom 3 rd floor Aruna Hotel & Resort
	08.00- 17.00	Pre-Conference Workshop: Impact Evaluation: Randomized Control Trial Method by J-PAL South-East Asia	Medana Meeting Room 2 nd floor Aruna Hotel & Resort
	08.00- 17.00	Pre-Conference Workshop: Economy-wide Approach to Policy Impact Evaluation by FEB UI	Malimbu Meeting Room 2 nd floor Aruna Hotel & Resort
	12.00- 17.30	Pre-Conference Workshop: Bappenas Policy Modeling Dashboard Executive Training by CEDS-Bappenas-GIZ	Aruna Grand Ballroom 3 rd floor Aruna Hotel & Resort
Monday, 18 th July 2022	08.00- 08.30	Registration	
	08.30- 09.00	Opening Ceremony - Al Qur'an Recital - Singing National Anthem Indonesia Raya - Chair of the Organizing Committee: Prof. Mansur Afifi - President IRSA: Prof. Arief Anshori Yusuf - Rector of UNRAM: Prof. Ir. Bambang Hari Kusumo, M.Agr.St., Ph.D. - Welcoming Cultural Performance: Dance Gendang Beleg	Aruna Grand Ballroom 3 rd floor Aruna Hotel & Resort
	09.00- 10.00	Keynote Address by Prof. John Gibson (Professor Economics, University of Waikato)	Aruna Grand Ballroom 3 rd floor Aruna Hotel & Resort
	10.00- 10.15	Tea break Poster Session 1	Hallway 2 nd floor Aruna Hotel & Resort
	10.15- 12.15	Parallel Session 1	
	12.15- 13.15	Lunch break	
	13.15- 14.45	Parallel Session 2	
	14.45- 15.00	Tea break Poster Session 2	Hallway 2 nd floor Aruna Hotel & Resort
	15.00- 16.30	Plenary Session 1 by 1. Alessandra Faggian (Director of Social Sciences and Vice Provost for Research, Gran Sasso Science Institute) 2. Fukunari Kimura (Chief Economist, Economic Institute for ASEAN and EastAsia/ERIA) Session Chair : Prof. Catur Sugiyanto (Gadjah Mada University)	Aruna Grand Ballroom 3 rd floor Aruna Hotel & Resort

	16.30-18.30	Parallel Session 3	
	19.00-21.00	Gala Dinner by BI Institute	Garden Aruna Hotel & Resort
Tuesday, 19 th July 2022	07.30-08.15	Breakfast together at Aruna Pandan All Day Dining	1 st floor Aruna Hotel & Resort
	08.15-09.30	Book Discussant by Prof. Iwan Jaya Azis (Cornell University)	Aruna Grand Ballroom 3 rd floor Aruna Hotel & Resort
	09.30-11.00	Parallel Session 4	
	11.00-11.15	Tea break	
	11.15-12.45	Parallel Session 5	
	12.45-13.45	Lunch break	
	13.45-15.45	Parallel Session 6	
	15.45-16.00	Tea break	
	16.00-17.30	Plenary Session 2 <ol style="list-style-type: none"> Amalia Adininggar Widyasanti (Deputy for Economic Affairs, Ministry of National Development Planning/BAPPENAS)- Blue Economy Framework: <i>the Engines of Indonesian Future Growth</i> Ida Aju (Daju) Resosudarmo (Resarch Fellow Crawford School of PublicPolicy, Australian National University). <p>Session Chair : I Ketut Budastra, Ph.D (University of Mataram)</p>	Aruna Grand Ballroom 3 rd floor Aruna Hotel & Resort
	17.30-18.00	Closing Ceremony <ul style="list-style-type: none"> BKF Paper Awards Announcement (Febrio Kacaribu, Phd, Chief of BKF) AAJI Scientific Review Awards 2022 Announcement (Budi Tampubolon; AAJI Director) IRSA Research Supports Announcement & Closing Remarks (Prof. Arief Anshory, IRSA President) 	Aruna Grand Ballroom 3 rd floor Aruna Hotel & Resort
	Wednesday, 20 th July 2022	07.00-end	Social Program <ol style="list-style-type: none"> Explore Lombok Sasak Tours Gili Trawangan Full Day Trip

PARALLEL SESSION OVERVIEW

MONDAY, 18 JULY 2022														
SESSION 1	SS: Tribute to Prof. Kawashima		SS-AIC1	SS-TNP2K	SS-ERIA1	PS1-1	PS1-2	PS1-3	PS1-4	PS1-5	PS1-6	PS1-7	PS1-8	PS1-9
	Eric John Heikkila, (University of Southern California), Tschangho John Kim, (University of Illinois at Urbana Champaign), Peter Gordon (University of Southern California) Hewings, Geoffrey J D (University of Illinois at Urbana Champaign), Porus Olpadwala (Univesity of New Mexico & Cornell University)		262	492	Venkatachalam Anbumozhi	451	183	274	290	212	224	180	473	302
			260	480	Amelia Litania	284	214	210	445	304	423	209	165	429
			178	481	Takuma Kato	477	320	310	396	366	111	357	341	298
			257	482		404	128	166	190	186	338	483	240	373
SESSION 2	SS-AIC2	PS2-1	PS2-2	PS2-3	PS2-4	PS2-5	PS2-6	PS2-7	PS2-8	PS2-9	PS2-10	PS2-11	BKF SPECIAL SESSION 1	
	169	123	158	289	418	233	354	321	173	339	439	305	470	
	108	283	208	493	234	349	273	387	269	453	267	444	471	
	231	255	478	107	496	196	420	277	456	414	438	117		
SESSION 3	SS-AIC3	SS-LPEM-BKF	SS-ERIA-LPEM	SS-AAJI	PS3-1	PS3-2	PS3-3	BKF SPECIAL SESSION 2	PS3-5	PS3-6	PS3-7	PS3-8	PS3-9	PS3-10
	270		Artidiatun Adji		146	432	137	468	167	159	188	335	419	368
	109		Fauziah Zen		171	200	465	469	407	176	334	160	222	287
	266		Faradina Maizar		235	382	168	472	409	193	223	403	125	379
			Teuku Riefky, Alin Halimatussadiyah		245	424	461	474	436	463	490	340	251	333

TUESDAY, 19 JULY 2022													
SESSION 4	SS-CEDS-GIZ	SS-IBER	PS4-1	PS4-2	PS4-3	PS4-4	PS4-5	PS4-6	PS4-7	PS4-8			
	316	Dr M. Chatib Basri, Professor Kimura, Dr. Lili Yan Ing & Dr. Yessi Vadila	118	103	106	364	448	328	311	275			
	337	140	301	317	129	244	239	395	170	460			
	437	494		318	408	325	314	264	205	484			
SESSION 5			PS5-1	PS5-2	PS5-3	PS5-4	PS5-5	PS5-6	PS5-7	PS5-8	PS5-9	PS5-10	PS5-11
			192	295	479	126	371	232	291	446	447	331	309
			181	475	426	139	397	355	411	292	157	383	370
			293	497	141	388	263	416	151	443	491	372	440
SESSION 6			PS6-1	PS6-2	PS6-3	PS6-4	PS6-5	PS6-6	PS6-7	PS6-8	PS6-9	PS6-10	PS6-11
			369	386	249	221	417	362	344	315	296	211	248
			441	218	228	113	144	198	346	286	306	133	124
			410	400	219	217	381	120	389	485	313	225	145
			163	398	458	189	162	185			115	216	

DAY TO DAY PARALLEL SESSION PROGRAM

MONDAY, 18TH JULY 2022

Parallel Session 1

Special Session: A Tribute to the late Prof. Tatsuhiko Kawashima	
Location: Aruna Grand Ballroom, 3 rd floor Aruna Senggigi Resort & Convention	
Chair	Prof. Iwan J. Azis (Cornell University)
Speakers	<ol style="list-style-type: none"> 1. Eric John Heikkila, (University of Southern California) - Visiting Professor Kawashima's ROXY Method 2. Tschangho John Kim, (University of Illinois at Urbana Champaign) - Professor Tatsuhiko Kawashima as a Humanist: A Personal Reflection of him. 3. Peter Gordon (University of Southern California) - Thinking About My Old Friend, Tats Kawashima 4. Hewings, Geoffrey J D (University of Illinois at Urbana Champaign) - Exploring the Internal Structure of Cities: Beyond the ROXY Index. 5. Porus Olpadwala (University of New Mexico & Cornell University)
AIC Special Session 1: Connectivity, People & Place	
Location: Malimbu 1, 2 nd floor Aruna Senggigi Resort & Convention	
Chair	Dr. Hasnawati Saleh, Australia Indonesia Centre, Indonesia
Presenters	<p>Harnessing Land Use Modelling for Risk Based Railway Planning in Indonesia Hizbaron, Dyah Rahmawati; Muthohar, Imam; Malkhamah, Siti; Adi, Indriya Parahita; Ervita, Komariah; Afifah, Sani Universitas Gadjah Mada, Indonesia</p> <p>The Role of Seaweed Farming on Coastal Rural Transformation in Indonesia Pasaribu, Syamsul Hidayat IPB University, Indonesia</p> <p>Understanding the aspirations of young people in rural communities in South Sulawesi Suwarso, Reni¹; Dressler, Wolfram²; Salim, Wilmar³; Sanders, Anna²; Faoziyah, Uly³; Putri, Retno Indro⁴</p> <p>The Impact of Pandemic on Economic and Healthcare Access in Indonesia Rammohan, Anu¹; Nasir, Sudirman²; Sumartono, Christrijogo³; Tohari, Achmad¹; Hidayanty, Healthy²; Glorino Rumambo Pandin, Moses⁴; Wulandari, Anis⁵</p> <p>¹Faculty of Arts, Business, Law and Education, the University of Western Australia; ²Faculty of Public Health, University of Hasanuddin, Indonesia; ³Faculty of Medicine, University of Airlangga, Indonesia; ⁴Faculty of Humanities, University of Airlangga, Indonesia; ⁵Faculty of Public Health, University of Airlangga, Indonesia</p>
TNP2K Special Session	
Location: Malimbu 2, 2 nd floor Aruna Senggigi Resort & Convention	
Chair	Dr. Diswandi, University of Mataram, Indonesia
Presenters	<p>Evidence-Based Policy Making Process Lessons Learned from TNP2K's Experience Hadi, Supravoga TNP2K</p> <p>Reforming Food Assistance Program in Indonesia: Obstacles, Success Story, and Challenges to Sustain It Satriawan, Elan TNP2K</p> <p>Solving Technical Matters, Treading the Political Waters: The Evolution of the Indonesian Unified Database Sumarto, Sudarno TNP2K</p> <p>Searching for Better Policies on The Village Fund Governance: Evidence, Reforms and Policy Challenges Purnagunawan, Raden Muhammad TNP2K</p>

ERIA Special Session	
Location: Medana 1, 2 nd floor Aruna Senggigi Resort & Convention	
Chair	Dr. Fauziah Zen, ERIA
Presenters	<p>Smart and Resilient Agricultural Value Chains: A Provocation for Policy Innovations in the Post COVID-19 Era Venkatachalam Anbumozhi Economic Research Institute for ASEAN and East Asia, Indonesia</p> <p>Ageing in Asia: Situation of Elderly People in ASEAN Countries Kato, Takuma Economic Research Institute for ASEAN and East Asia, Indonesia</p> <p>Women and Digital Economy in ASEAN: Entrepreneurship, Digital Divide, and the Spatial Dimension Litania, Amelia; Marsan, Giulia ERIA, Indonesia</p>
Parallel Session 1-1	
Location: Medana 2, 2 nd floor Aruna Senggigi Resort & Convention	
Chair	Dr. Akhmad Saufi, University of Mataram, Indonesia
Presenters	<p>Does Inflation Matter For The Rural Poverty In The Pandemic Era?: Evidence From Indonesia Wijaya, Asyadia Haq Zahra; Santoso, Dwi Budi Department of Economics, Brawijaya University, Indonesia</p> <p>The Impact of COVID-19 on Food Insecurity and the Mitigating Role of Social Assistance: Panel Data Evidence from Indonesia Al Izzati, Ridho¹; Musthofa, Fauzan Kemal¹; Andrina, Michelle¹; Andriyani, Sylvia¹; Fillaili, Rizki¹; Basnett, Bimbika²; Riyanto, Usha²; Muyanto, Ratnawati³; Suryahadi, Asep¹ ¹SMERU Research Institute, Indonesia; ²Prospera; ³Unicef</p> <p>INSIGHTS FROM GIANT ASIA PACIFIC REGION E-HAILING COMPETITIVE POSITION DURING THE PANDEMIC: A BREATH OF FRESH AIR FOR MALAYSIAN E-HAILING STARTUPS Ahmad, Arman¹; Masri, Ridzuan²; Vui, Chok Nyen²; Biju, Seena²; Shamsudin, Mohd. Farid¹; Malik, Ilham Sentosa Anwar¹ ¹Universiti Kuala Lumpur Business School, Malaysia; ²Manipal International University, Malaysia</p> <p>The Role of Introductory Business Management Courses in Fostering Entrepreneurial Interest in Sharia Business Management Students at FEBI UIN Imam Bonjol Padang During the COVID-19 Situation ADIF, RIANDY MARDHIKA; Andespa, RONI; PRATIWI, DIANA; FATALITA, PENIA UIN IMAM BONJOL PADANG, Indonesia</p>
Parallel Session 1-2	
Location: Transit/VIP Room, 2 nd floor Aruna Senggigi Resort & Convention	
Chair	Dr. Embun Suryani, University of Mataram, Indonesia
Presenters	<p>PUBLIC SERVICE POLICY IMPLEMENTATION THROUGH AN APPLICATION BASED ON SMART CITY DURING COVID-19 PANDEMIC IN MATARAM CITY, PROVINCE OF WEST NUSA TENGGARA Fatimah, Siti; Suriadi, Irwan; Sriningsih, Siti University of Mataram, Indonesia</p> <p>Regional Economic Recovery: Post Pandemic through Sector Diversification Strategy Martak, Yusuf Faisal; Arista, Eka Rachmayuni; Kusumawardani, Salsabila; Danuza, Muhammad Ciro; Huda, Nailul; Febriani, Dyah Ayu; Hakim, Lukman Article 33 Indonesia, Indonesia</p> <p>In the post-COVID pandemic, Do village funds increase resilience in rural areas? Imam, Muhammad Kholisul¹; Santosa, Dwi Budi² ¹Politeknik Negeri Malang, Indonesia; ²Universitas Brawijaya, Indonesia</p> <p>Contribution of E-Money in Triggering Enterprise Credit: An Empirical Analysis Using Dynamic Panel Model during Indonesia's COVID-19 Pandemic Siregar, Sri Indriyani BPS-Statistics North Padang Lawas, Indonesia</p>

Parallel Session 1-3

Location: D'Lombok Spa Room, 2nd floor Aruna Senggigi Resort & Convention

Chair	Vici Handalusia Husni, University of Mataram, Indonesia
Presenters	<p>THE STRUGGLE OF SMALL AND MEDIUM ENTERPRISES DURING THE PANDEMIC Budi Suharto, Rahmad¹; Lestari, Diana²; Permana, Meiki³ ¹Universitas Mulawarman, Indonesia; ²Universitas Mulawarman, Indonesia; ³Universitas Mulawarman, Indonesia</p> <p>Creative or Not Creative Yet?: Assessing the Readiness of Cities in Promoting Creative Industry in Indonesia Nugroho, Prihadi¹; Tyas, Wido Prananing¹; Artiningsih, Artiningsih¹; Asyifa, Ikrima²; Putri, Novita Rohmana¹ ¹Diponegoro University, Indonesia; ²Agency of Housing, Settlement, Spatial Planning and Agrarian Affairs, Government of Tegal Regency, Indonesia</p> <p>The Analysis of Value Added and Profits of the Gambo Textile Industry in Musi Banyuasin Regency Hamira, Hamira; Robiani, Bernadette; Mukhlis, Mukhlis Universitas Sriwijaya, Indonesia</p> <p>How Resilience of MSMEs During Covid-19 Crisis in Indonesia Andrini, Retno¹; Setyoningsih, Tri² ¹Bank Indonesia, Indonesia; ²Bank Indonesia Representative Office of Lampung Province, Indonesia</p>

Parallel Session 1-4

Location: Artist Room, 3rd floor Aruna Senggigi Resort & Convention

Chair	Jaka Anggara, University of Mataram, Indonesia
Presenters	<p>ASSET SECURITIZATION AS A LONG-TERM FUNDING ALTERNATIVE AND FEE BASED INCOME ALTERNATIVE (CASE STUDY ON BANK BTN) Prameswari, Chantika Dhiyah; Rokhim, Rofikoh Universitas Indonesia, Indonesia</p> <p>The Severity of Covid-19 Outbreak and Inflation Rate in Indonesia Hag, Danedo Rayhan¹; Santoso, Dwi Budi² ¹University Brawijaya, Indonesia; ²University Brawijaya, Indonesia</p> <p>The Shifting of Use of Ecosystem Services in Nusa Lembongan due to Covid-19 Priyamanaya, Nyoman; Salim, Wilmar A. Institut Teknologi Bandung, Indonesia</p> <p>Labour Market Transition During Pandemic Covid-19 in East Java Arisetyawan, Kukuh²; Pratomo, Devanto Shasta¹; Prastiwi, Lustina Fajar³ ¹Brawijaya University, Indonesia; ²Brawijaya University, Indonesia; ³Universitas Negeri Malang, Indonesia</p>

Parallel Session 1-5

Location: Kayu Manis Rooftop Room, 3rd floor Aruna Senggigi Resort & Convention

Chair	Tri Hanani, University of Mataram, Indonesia
Presenters	<p>The COVID-19 Pandemic: Are There Still Work Opportunities for Vocational High School (SMK) Graduates? (Case Study of the Riau Islands Province) Hakim, Lukman; Febrian, Ramada; Danuza, Muhammad Ciro; Kusumawardani, Salsabila; Martak, Yusuf Faisal Article 33 Indonesia, Indonesia</p> <p>The Role of Special Autonomy Fund to Improve the Public Service in Papua Province Ginting, Ari Mulianta Badan Keahlian, Setjen DPR RI, Indonesia</p> <p>Proving smoking impact on hypertension using difference-in-difference with IFLS data Yana, Mira Suci¹; Mahdi, Salsabila¹; Mahdi, Saiful^{1,3}; Kesuma, Zurnila Marli^{2,3} ¹Econometrics Lab., Department of Statistics, Universitas Syiah Kuala, Indonesia; ²Biostatistics Lab, Department of Statistics, Universitas Syiah Kuala, Indonesia; ³Department of Statistics, Universitas Syiah Kuala, Indonesia</p> <p>DETERMINANT FACTORS OF UNMET NEED FOR FAMILY PLANNING IN WEST SUMATERA Khairati, Rusda; Syahni, Rahmat; Widodo, Teguh Andalas University, Indonesia</p>

Parallel Session 1-6

Location: Aruna Seaview Restaurant, Aruna Senggigi Resort & Convention

Chair

Dr. Saipul Arni Muhsyaf, University of Mataram, Indonesia

Presenters

What Drive Farmers' Food Security Status During the COVID-19 Pandemics? Evidence from East Java of Indonesia

Toiba, Hery; Hartono, Rahman

Brawijaya University, Indonesia

Land property rights, productivity, and food security in small islands: A case in Ambon islands, Maluku, Indonesia

Girsang, Wardis¹; Siregar, Adelina²; -, Hamid³; Magana, Ali⁴

¹Pattimura University, Indonesia; ²Pattimura University, Indonesia; ³Agriculture Office, Maluku, Indonesia;

⁴Agriculture Office, Maluku, Indonesia

Does Having Access to Clean Energy Improve Poor Households' Food Variety? Empirical Evidence from Indonesia

Amalia, Ratna Rizki¹; Nasrudin, Rus'an²

¹BPS-Statistics Indonesia, Indonesia; ²Department of Economics, Faculty of Economics and Business, University of Indonesia

Fertilizer Subsidy Policy, Farmer Welfare, and Food Security

Hermawan, Iwan¹; Harefa, Mandala²; Budiyan, Eka²; Saragih, Juli Panglima²; Lisnawati, Lisnawati²; Izzaty, Izzaty²

¹BRIN, Indonesia; ²Pusat Penelitian, BKD, Setjen DPR RI

Parallel Session 1-7

Location: Montana Meeting Room 1, Montana Premier Hotel Senggigi

Chair

Tusta Citta Ihtisan Tri Prasyda, University of Mataram, Indonesia

Presenters

The impact of COVID-19 pandemic on the livelihood of rural farming communities of West Sumatra, Indonesia

Mahdi, Mahdi

Universitas Andalas, Indonesia

Now That My Older Sibling Has Gone to School, Can I Go Too? The Impact of PKH on Sibling Rivalry During Covid-19 Pandemic

Hanri, Muhammad^{1,2}; Handayani, Dwini¹; Moeis, Faizal Rahmanto^{1,2}

¹Faculty of Economics and Business, University of Indonesia; ²Institute for Economic and Social Research, Faculty of Economics, University of Indonesia

Could Digitalization Help Workers Defend Jobs and Income During Covid-19 Pandemic? A Case Study in Banjarmasin City

Muttaqin, Hidayatullah

Lambung Mangkurat University, Indonesia

Strengthening Economic Competitiveness with Circular Economic Governance

Rishanty, Arnita¹; Sambodo, Maxensius Tri²

¹Bank Indonesia, Indonesia; ²Badan Riset dan Inovasi Nasional

Parallel Session 1-8

Location: Montana Meeting Room 2, Montana Premier Hotel Senggigi

Chair	Rizal Kurniansyah, University of Mataram, Indonesia
Presenters	<p>Optimization of Bilateral Cooperation Program at the Regional Level: Vocational Schooling Program and Firm Productivity in Central Java Wirawan, Bangkit A.¹; Rum, Muhammad² ¹Universitas Diponegoro, Indonesia; ²Universitas Gadjah Mada, Indonesia</p> <p>Do Leader's Education Matter? Evidence from villages in Eastern Indonesia Sukartini, Ni Made^{1,2}; Solihin, Achmad^{1,2}; Handayani, Triwuli³; Permatasari, Maya Rusdiana⁴; Waro, Ifadatul⁵ ¹Sekolah Pascasarjana and FEB Universitas Airlangga, Indonesia; ²Sekolah Pascasarjana and FEB Universitas Airlangga, Indonesia; ³Mahasiswa Magister Ilmu Ekonomi, FEB Unair; ⁴Mahasiswa MEK, Sekolah Pascasarjana Unair; ⁵Mahasiswa MEK, Sekolah Pascasarjana Unair</p> <p>Inter-Sectoral and Inter-Regional Linkages in the Economy of South Kalimantan Province: Data Analysis of Inter Regional Input Output (IRIO) tables Muzdalifah, Muzdalifah; Anward, Ryan Juminta Lambung Mangkurat University, Indonesia</p> <p>Securing and sustaining water services: an evaluation of Pamsimas Program in Bali Sukadana, I Wayan; Bendesa, I K.G.; Setyari, Ni Putu Wiwin; Yasa, I G. W. Murjana Udayana University, Indonesia</p>

Parallel Session 1-9

Location: Naga Restaurant, 1st Floor Aruna Senggigi Resort & Convention

Chair	Ihyana Hulfa, University of Mataram, Indonesia
Presenters	<p>Integrated Entrepreneurship Education, Entrepreneurship Intention and Multidimensional Poverty Alleviation in West Jakarta Amran, Ellyana Trisakti University, Indonesia</p> <p>A Spatial Analysis of Stunted Child Determinants in West Java Province of Indonesia Wardhana, Dadan¹; Wahyuni, Inge² ¹Badan Perencanaan Pembangunan, Penelitian dan Pengembangan Daerah Kabupaten Bandung, Indonesia; ²Badan Penelitian dan Pengembangan Daerah Provinsi Jawa Barat, Indonesia</p> <p>Mega Project in a Small Island: Reclamation and Its Discontent in Penang Febriansyah, Muhammad Universiti Sains Malaysia, Malaysia</p> <p>How to Transform the Rural Economy After COVID-19 Pandemic Rosandi, Vely Brian; Rustiadi, Ernan; Pravitasari, Andrea Emma Institut Pertanian Bogor, Indonesia</p>

Parallel Session 2

AIC Special Session 2: COVID-19, People & Health	
Location: Malimbu 1, 2 nd floor Aruna Senggigi Resort & Convention	
Chair	Dr. Reni Suwarso, Australia Indonesia Centre, Indonesia
Presenters	<p>Tackling COVID's 'shadow pandemic' and its impact on people with a disability in South Sulawesi <u>Junaid, Muhammad</u>¹; Batagol, Becky²; Nasir, Sudirman¹; Spivakovsky, Claire³; Salim, Ishak⁴; Cresciani, Rafaella³; Ahsan, Ulil¹; Pracilla Putri, Amanda⁴; NH Ramli, Rafika¹; Natasya, Betrin¹ ¹Center of Excellence for Interdisciplinary and Sustainability Studies (CEISS), Sekolah Pascasarjana, Universitas Hasanuddin; ²Monash University; ³The University of Melbourne; ⁴Indonesian Difability Movement for Equality, South Sulawesi</p> <p>The impact of COVID-19 on women's access to water, sanitation, and hygiene in an Indonesian fishing village <u>Capri, Wigke</u>¹; Francis, Naomi² ¹Universitas Gadjah Mada, Indonesia; ²Monash University, Australia</p> <p>Occupational Health and Safety (OHS) Risks for the Indonesian Healthcare Workforce during the COVID-19 Pandemic <u>Dewi, Ratna Sari</u>¹; Prajogo, Daniel²; Sohal, Amrik²; Dewi, Dyah Santhi¹; Sudiarno, Adithya¹; Widyaningrum, Retno¹; Rahman, Arief¹; Maryani, Anny¹ ¹Institut Teknologi Sepuluh Nopember, Indonesia; ²Monash University, Australia</p>
Parallel Session 2-1	
Location: Medana 1, 2 nd floor Aruna Senggigi Resort & Convention	
Chair	Prof. Sulhaini Sulhaini, University of Mataram, Indonesia
Presenters	<p>The impact of COVID-19 on women's access to water, sanitation, and hygiene in an Indonesian fishing village <u>Capri, Wigke</u>¹; Francis, Naomi² ¹Universitas Gadjah Mada, Indonesia; ²Monash University, Australia</p> <p>Overcrowded Housing's Impact on the Covid-19 Spread Cases in Indonesia <u>Hendri, Davy; King, Irsadunas; Hendra, Testru</u> UIN Imam Bonjol Padang, Indonesia</p> <p>Did individuals who graduated during the pandemic experience a longer job search duration? Evidence from Indonesia <u>Amelia, Lia; Fatah, Akhmad Ramadhan; Musthofa, Fauzan Kemal; Andriyani, Sylvia</u> The SMERU Research Institute, Indonesia</p>
Parallel Session 2-2	
Location: Medana 2, 2 nd floor Aruna Senggigi Resort & Convention	
Chair	Nina Karina Karim, University of Mataram, Indonesia
Presenters	<p>Does COVID-19 Vaccination and Government Expenditure have an Impact on Economic Recovery of Central Indonesia Region? <u>Suhindarto, Suhindarto; Ikhwanto, Yogy</u> Ministerial Manuscripts Preparation Section, Coordinating Ministry for Economic Affairs of Republic of Indonesia, Indonesia</p> <p>Mental Health Consequences of COVID-19 Pandemic on Teachers and Caregivers of Early Childhood Education <u>Suriastini, Ni Wayan; Herawati, Fita; Wijayanti, Ika Yulia; Firdauzi, Indrawan; Pujiastuti, Setyo; Sukamtiningsih, Sukamtiningsih</u> SurveyMETER, Indonesia</p> <p>BACK TO THE FUTURE: IS THE TRAVEL BUBLE ISSUE IN MALAYSA AND INDONESIA WILL SUSTAIN THE REGION TOURISM OUTBREAK OF COVID-19? <u>Ahmad, Arman; Sheikh Khairudin, Sheikh Muhamad Hizam; Saidun, Zulkifli; Malik, Ilham Sentosa Anwar; Mohamad Yazid, Mohd Faizun; Shamsudin, Mohd Farid</u> Universiti Kuala Lumpur Business School, Malaysia</p>

Parallel Session 2-3	
Location: Transit/VIP Room, 2 nd floor Aruna Senggigi Resort & Convention	
Chair	Lalu Adi Permadi, University of Mataram, Indonesia
Presenters	<p>Strengthening E-Marketing through warungjogja.com and supporting financial management through SIK BUM Desa Zamzami, Faiz; Huda, Irkham UGM, Indonesia</p> <p>THE ROLE OF SPACES FOR BALANCING SDG's GOALS BY 2030 Permatasari, Destarita; Fauzyah Rahmah, Eva Kementerian Agraria dan Tata Ruang / Badan Pertanahan Nasional and Institut Pertanian Bogor , Indonesia</p> <p>Price Setting Behavior in Micro and Small Enterprises Online Retailers (Case Study in Indonesia) Indawan, Fiskara Bank Indonesia, Indonesia</p>
Parallel Session 2-4	
Location: D'Lombok Spa Room, 2 nd floor Aruna Senggigi Resort & Convention	
Chair	Siti Hamdiah Rojabi, University of Mataram, Indonesia
Presenters	<p>Crimes against persons with disabilities: Case in Indonesia Wulandari, Grace; Mia, Ni Putu; Kautsar, Achmad Universitas Pertamina, Indonesia</p> <p>How far we go? A meta-analysis on The Impact of Indonesian subsidies and transfer policy on poverty and socio-economic condition Sastiono, Prani; Hanum, Chairina; Wiguna, Ghany Ellantia; Nasrudin, Rus'an; Hanri, Muhammad; Iskandar, Sulistiadi Dono; Moeis, Faizal Rahmanto LPEM FEB UI, Indonesia</p> <p>The Productivity of Urban Farming During Pandemic COVID-19 in The City of Yogyakarta Sugiyanto, Catur; Saputra Arbi, Dion; Syahrul Fauzi, Ahmad FEB UGM, Indonesia</p>
Parallel Session 2-5	
Location: Aruna Ballroom 1, 3 rd floor Aruna Senggigi Resort & Convention	
Chair	Dr. Lalu M Furkan, University of Mataram, Indonesia
Presenters	<p>Childhood malaria infection and human capital in later life: Evidence from Eastern Indonesia Riswandi, Riswandi¹; Resosudarmo, Budy P¹; Witoelar, Firman¹; Mollet, Julius Ary²; Girsang, Wardis³ ¹Australian National University, Canberra, Australia; ²Universitas Cenderawasih, Papua, Indonesia; ³Universitas Pattimura, Ambon, Indonesia</p> <p>Social Networks and Life Satisfaction of Internal Migrant in Indonesia Parhah, Siti¹; Alisjahbana, Armida S.²; Fahmi, Mohamad³; Purnagunawan, Raden Muhamad⁴ ¹Universitas Pendidikan Indonesia; ²Universitas Padjadjaran; ³Universitas Padjadjaran; ⁴Universitas Padjadjaran</p> <p>IMPACT OF MENTAL HEALTH AND SOCIAL ECONOMIC STATUS ON LEVEL OF LIFE SATISFACTION Tarani, Ni Putu Mia; Kautsar, Achmad Pertamina University, Indonesia</p>
Parallel Session 2-6	
Location: Aruna Ballroom 2, 3 rd floor Aruna Senggigi Resort & Convention	
Chair	Dr. Saipul Arni Muhsyaf, University of Mataram, Indonesia
Presenters	<p>Tourism New Economy : Determinants of Domestic Tourism Demand In Indonesia Sari, Sari; Afiatno, Bambang Eko Airlangga University, Indonesia</p> <p>What motivates Indonesian Muslim Female Students to Select Veil (Hijab) Fashion : Ethics or Aesthetic? Hendri, Davy¹; Nurmina, Nurmina²; Nur Fajri, Ikkal¹; Arsyi, Wushi Adilla¹ ¹UIN Imam Bonjol Padang, Indonesia; ²Universitas Negeri Padang, Indonesia</p> <p>The Impact of Economic Performances on Tourism Industry in Indonesia: Before and During Pandemic Covid-19 Nasir, M. Abd¹; Yagin, Misbahol²; Sari, Mega Indah³; Indrawati, Yulia¹</p>

Parallel Session 2-7	
Location: Artist Room, 3 rd floor Aruna Senggigi Resort & Convention	
Chair	Ahmad Zaenal Wafik, University of Mataram, Indonesia
Presenters	<p>Long-term Impact Evaluation of a Conditional Cash Transfer Program on Poverty Reduction: Evidence from the Philippine Regions Fabella, Melisa Manzano Ritsumeikan University, Japan</p> <p>SUSTAINABLE LIVELIHOODS IN THE MARINE FISHERIES SECTOR IN THE CONTEXT OF COASTAL AREA DEVELOPMENT IN THE DISTRICT OF PULAU TIGA, NATUNA REGENCY Asandy, Teguh; Salim, Wilmar A. Institut Teknologi Bandung, Indonesia</p> <p>Microcredit Program Impact on Poverty: Empirical Evidence from Indonesia Rohmatilah, Dwi Atmi¹; Nasrudin, Rus'an² ¹Graduate Program in Economics, Faculty of Economics and Business, Universitas Indonesia; ²Department of Economics, Faculty of Economics and Business, Universitas Indonesia, Depok Indonesia</p>
Parallel Session 2-8	
Location: Aruna Seaview Restaurant, Aruna Senggigi Resort & Convention	
Chair	Rizal Kurniansyah, University of Mataram, Indonesia
Presenters	<p>Public Financial Governance and Socio-Economic Performance: Evidence from Local Government in Indonesia Artha, I Kadek Dian Sutrisna; Usman, Usman; Sumartono, Dewinta Illinia; Amarullah, Irwan; Maulendra, Mohamad Ajie PT Sarana Multi Infrastruktur, Indonesia</p> <p>How is the Quality of Local Government Financial Statements in Papua and West Papua Provinces? Firmansyah, Amrie; Yuniar, M Rizal Polytechnic of State Finance STAN, Indonesia</p> <p>The Only Game in Town? Democracy and Economic Growth in Indonesia Jamil, Hidsal; Ananda, Candra Fajri; Prasetyia, Ferry; Santoso, Dwi Budi Department of Economics, Brawijaya University, Indonesia</p>
Parallel Session 2-9	
Location: Kayu Manis Rooftop Room, 3 rd floor Aruna Senggigi Resort & Convention	
Chair	Ihyana Hulfa, University of Mataram, Indonesia
Presenters	<p>Public Investment Policy in Agriculture Sector, Food Security, and Farmers' Welfare Widyastutik, Widyastutik¹; Amaliah, Syarifah¹; Hermawan, Iwan² ¹Institut Pertanian Bogor University; ²BRIN, Indonesia</p> <p>Analysis of Investment Efficiency in Agricultural and Industrial Areas Santoso, Dwi Budi; Wijaya, Anorti Ika Brawijaya University, Indonesia</p> <p>Energy Transition Risks: Prospect and Challenges at ASEAN Plus Three Countries Sambodo, Maxensius Tri^{1,2}; Rishanty, Arnita² ¹Badan Riset dan Inovasi Nasional; ²Bank Indonesia Institute</p>
Parallel Session 2-10	
Location: Montana Meeting Room 1, Montana Premier Hotel Senggigi	
Chair	Baiq Nikmatul Ulya, University of Mataram, Indonesia
Presenters	<p>TOURISM SECTOR CONTRIBUTION TO WEST SUMATRA REGIONAL ECONOMY Rustiadi, Ernan^{1,2}; Hadiano, Adi^{1,3}; Holis, Ade⁴; Nugraheni, Sri Retno Wahyu³; Pramudita, Danang³; Ansofino, Ansofino⁵ ¹Center for Regional Analysis, Development and Planning (Crestpent/P4W) IPB University, Indonesia; ²Division of Regional Planning Department of Soil Science and Land Resource Faculty of Agriculture, IPB University, Indonesia; ³Faculty of Economics and Management, IPB University, Indonesia; ⁴International Center for Applied Finance and Economics (InterCAFE), IPB University, Indonesia; ⁵Economic Education Department, SKIP PGRI West Sumatra, Padang, Indonesia</p> <p>The Determinant Factor of the Indonesia's Domestic Investment in Q1 2010-Q4 2018 Djirimu, Mohamad Ahlis Faculty of Economics and Business Tadulako University, Indonesia</p> <p>Sustainable Local Economic Growth through Mosque-Based Economy Sebayang, Asnita Frida; Haryatiningsih, Ria; Hayati, Fitroh; Fathia, Yolanda Dienu; Pratiwi, Syahrani Chantika Universitas Islam Bandung, Indonesia</p>

Parallel Session 2-11

Location: Montana Meeting Room 2, Montana Premier Hotel Senggigi

Chair	Hasnia Minanda, University of Mataram, Indonesia
Presenters	<p>The Ethical Perspective of Digital-Technology-Driven Economic Disruption Kusuma, Emerald Ayu¹; Yulistiyono, Herry²; Wicaksono, Wahyu Widhi¹ ¹Sekolah Tinggi Ilmu Ekonomi Indonesia (STIESIA) Surabaya, Indonesia; ²Universitas Trunojoyo Madura</p> <p>Analysis of Financial Performance Before and After the Coming of Covid-19 in Indonesian Digital Companies in the Retail Trade and Banking Sector ADIF, RIANDY MARDHIKA¹; AFRIDA, YENTI²; Ramadhan, Sri³; Fauzyah, Sakinah⁴; Joni, Putri Mailida⁵ ¹UIN IMAM BONJOL PADANG, Indonesia; ²UIN IMAM BONJOL PADANG, Indonesia; ³UIN IMAM BONJOL PADANG, Indonesia; ⁴UIN IMAM BONJOL PADANG, Indonesia; ⁵UIN IMAM BONJOL PADANG, Indonesia</p> <p>SUSTAINABILITY AND FINANCIAL INCLUSION IN BPUM RECEIVING MSMEs IN BALI PROVINCE Purbadharmaja, Ida Bagus Putu; Kusuma, Gita Ayu; Ulianti, Ni Putu Lola Udayana University, Indonesia</p>

BKF Special Session 1

Location: Malimbu 2, 2nd floor Aruna Senggigi Resort & Convention

Chair	Dr. Diswandi, University of Mataram, Indonesia
Presenters	<p>Comparative Study of Land and Building Tax Stimulus in Rural and Urban Sector Hanifah, Afif¹; Safitra, Dhian Adhetiya² ¹Ministry of Finance, Indonesia; ²Politeknik Keuangan Negara STAN</p> <p>Does National Community Empowerment Program in Rural Areas Develop Village's Social Capital? Effendi, Yuventus Fiscl Policy Agency, Indonesia</p>

Parallel Session 3

AIC Special Session 3: COVID-19, People & Economic Recovery

Location: Malimbu 1, 2nd floor Aruna Senggigi Resort & Convention

Chair	Prof. Nunung Nuryartono, Faculty of Economics and Management. IPB University,
Presenters	<p>Health or economy in Indonesia? Making the best impossible decision during COVID-19 Ernst, Andreas¹; Kasim, Muhammad Firdaus²; Kazemi, Ahmad¹; Bodic, Pierre Le¹; Lestari, Dewi²; Nasir, Sudirman²; Perrykkad, Andrew¹; Samir, Salman²; Siswanto, Siswanto²; Thamrin, Sri Astuti² ¹Monash University, Australia; ²Universitas Hasanuddin, Indonesia</p> <p>Road to recovery: Assessing job risk and the impact on the most vulnerable in Indonesia's pandemic-hit tourism industry Ya-Yen, Sun¹; Jie, Wang¹; Futu, Faturay³; Auwalin, Ilmiawan²; Lintje, Sie¹ ¹University of Queensland, Australia; ²Universitas Airlangga, Indonesia; ³Fiscal Policy Agency, Ministry of Finance of The Republic of Indonesia</p> <p>Young Creative Workers and their Strategies to Deal with the First Wave of COVID-19 Pandemic in Yogyakarta Sutopo, Oki Rahadianto¹; Beta, Annisa R²; Utomo, Ariane²; Kurnia, Novi¹; Wibawanto, Gregorius Ragil¹ ¹Youth Studies Centre FISIPOL Universitas Gadjah Mada, Indonesia; ²The University of Melbourne, Australia</p>

<u>LPEM FEB UI - BKF – GIZ Special Session</u>	
Location: Malimbu 2, 2 nd floor Aruna Senggigi Resort & Convention	
Chair	Chairina Hanum Siregar (Institute for Economic and Social Research, Faculty of Economics and Business, University of Indonesia (LPEM FEB UI))
Presenters	<p>Addressing the Needs of Tax Incentive Reform Under Pillar Two- Global Minimum Tax Mode Rules.</p> <p>Riatu M. Qibthiyah (Institute for Economic and Social Research, Faculty of Economics and Business, University of Indonesia (LPEM FEB UI)) (riatu@lpem-feui.org), Personal Income Tax Expert – LPEM GIZ Pool of Expert, Domestic Resource Mobilization on Government Revenue</p> <p>Christine Tjen (Institute for Economic and Social Research, Faculty of Economics and Business, University of Indonesia (LPEM FEB UI)) (christine@lpem-feui.org, indivara_devi@yahoo.com), Corporate Income Tax Expert – LPEM GIZ Pool of Expert, Domestic Resource Mobilization on Government Revenue</p> <p>Yulianti Abbas (Faculty of Economics and Business, University of Indonesia) (yulianti@abbas-id.net), Corporate Income Tax Expert – LPEM GIZ Pool of Expert, Domestic Resource Mobilization on Government Revenue</p> <p>Syahda Sabrina (Institute for Economic and Social Research, Faculty of Economics and Business, University of Indonesia (LPEM FEB UI)) (syahda.sabrina26@gmail.com)</p> <p>The Potential Distributional and Economic Wide Impact of The New Indonesia's VAT Law Implementation</p> <p>Rus'an Nasrudin (Faculty of Economics and Business, University of Indonesia) (rusan.nasrudin@gmail.com)</p> <p>Djoni Hartono (Faculty of Economics and Business, University of Indonesia) (djoni.hartono@ui.ac.id)</p> <p>Faizal Moeis (Institute for Economic and Social Research, Faculty of Economics and Business, University of Indonesia (LPEM FEB UI)) (faizal_moeis@yahoo.com)</p> <p>Andhika Putra Pratama (Institute for Economic and Social Research, Faculty of Economics and Business, University of Indonesia (LPEM FEB UI)) (andhikapp29@gmail.com)</p> <p>Raka Rizky Fadhillah (Institute for Economic and Social Research, Faculty of Economics and Business, University of Indonesia (LPEM FEB UI))</p> <p>VAT in health sector: Lessons from Indonesia</p> <p>Hadi Setiawan (Fiscal Policy Office, Ministry of Finance, Republic of Indonesia) (hadi.setiawan@kemenkeu.go.id)</p> <p>Rakhmindyarto (Financial Education and Training Agency, Ministry of Finance, Republic of Indonesia) (rakhmindyarto@kemenkeu.go.id)</p> <p>Mohamad Nasir (Fiscal Policy Office, Ministry of Finance, Republic of Indonesia) (m_nasir@kemenkeu.go.id)</p> <p>Sofia Arie Damayanty (Fiscal Policy Office, Ministry of Finance, Republic of Indonesia) (sofia.damayanty1@kemenkeu.go.id)</p> <p>Suska (Fiscal Policy Office, Ministry of Finance, Republic of Indonesia) (suska73@kemenkeu.go.id)</p> <p>Dhany Setiawan (Fiscal Policy Office, Ministry of Finance, Republic of Indonesia) (dhany.setiawan@kemenkeu.go.id)</p> <p>Rita Helbra Terrini (Fiscal Policy Office, Ministry of Finance, Republic of Indonesia) (rita.helbra@kemenkeu.go.id)</p> <p>Anda Nugroho (Fiscal Policy Office, Ministry of Finance, Republic of Indonesia) (anda.nugroho@kemenkeu.go.id)</p> <p>Eko Wicaksono (Fiscal Policy Office, Ministry of Finance, Republic of Indonesia) (ewicaksono@kemenkeu.go.id)</p> <p>Tri Achya Ngasuko (Fiscal Policy Office, Ministry of Finance, Republic of Indonesia) (triachya@kemenkeu.go.id)</p> <p>Nugraheni Kusumaningsih (Fiscal Policy Office, Ministry of Finance, Republic of Indonesia) (nkusumaningsih@kemenkeu.go.id)</p> <p>Ferry Afi Andi (Fiscal Policy Office, Ministry of Finance, Republic of Indonesia) (ferry.andi@kemenkeu.go.id)</p> <p>Citra Handayani Nasruddin (Fiscal Policy Office, Ministry of Finance, Republic of Indonesia) (citra.handayani@kemenkeu.go.id)</p> <p>Ami Muslich (Fiscal Policy Office, Ministry of Finance, Republic of Indonesia) (ami_muslich@kemenkeu.go.id)</p>

ERIA-LPPM FEB UI Special Session	
Location: Medana 1, 2 nd floor Aruna Senggigi Resort & Convention	
Chair	Rayka Abdillah Haqi, PT Penjaminan Infrastruktur Indonesia (Persero)
Presenters	<p>Enhancing Infrastructure Provision to Address Digital Divide Zen, Fauziah²; Riefky, Teuku¹; <u>Adji, Artidiatun</u>³; Aritejo, Bayu Aji³; Qibthiyyah, Riatu M¹ ¹LPEM FEB UI, Indonesia; ²ERIA; ³University of Gadjah Mada</p> <p>Improving the Role of PPP Scheme in the Development of Infrastructure Projects Riefky, Teuku¹; <u>Zen, Fauziah</u>²; Gultom, Yohana¹; Purwoto, Hengki³; Pratomo Ismujatmika⁴; Dally Ramdhan Sugandria⁴; Rayka Abdillah Haqi⁴; Yunan Novaris⁴; Muhammad Riza Prayudhia⁴; Muhammad Jibril⁴ ¹LPEM FEB UI, Indonesia; ²ERIA, Indonesia; ³University of Gadjah Mada; ⁴PT Penjaminan Infrastruktur Indonesia (Persero)</p> <p>Impact Investing: Fueling the SDGs Jahen F. Rezky, Faradina Maizar¹ ¹LPEM FEB UI, Indonesia</p> <p>Regional Cooperation for Financing Renewable Energy in Southeast Asia Azhgaliyeva, Dina²; Riefky, Teuku¹; <u>Halimatussadiah, Alin</u>¹; Farah, Rafika¹; Sonobe, Tetsushi²; Utama, Nuki Agya³ ¹LPEM FEB UI, Indonesia; ²Asian Development Bank Institute, Japan; ³ASEAN Centre for Energy</p>
AAJI Special Session	
Location: Medana 2, 2 nd floor Aruna Senggigi Resort & Convention	
Parallel Session 3-1	
Location: Medana 2, 2 nd floor Aruna Senggigi Resort & Convention	
Chair	Ahmad Zaenal Wafik, University of Mataram, Indonesia
Presenters	<p>Volatility Shock Persistence Analysis of Market Index And Sectoral in IDX During Covid-19 Pandemic <u>Nugroho, Budi</u>; Riyanti, Ririen University of Indonesia, Indonesia</p> <p>CONDITIONS OF WORKERS WHO WORK FROM HOME DURING THE COVID-19 PANDEMIC IN INDONESIA <u>Prastiwi, Lustina Fajar</u>¹; <u>Arisetyawan, Kukuh</u>² ¹Universitas Negeri Malang, Indonesia; ²Universitas Negeri Surabaya, Indonesia</p> <p>Does Sustainable Farming Practice matter? The impact of Covid-19 pandemic to Kintamani Bali Arabica Coffee <u>Rachmaningtyas, Lyla</u> Goettingen University, Germany</p> <p>The Impact of Covid-19 Pandemic on Married-Working Women: Is there a shecession in Indonesian Regional Labor Market? <u>Purwanto, Deney Adi</u> IPB University, Indonesia</p>
Parallel Session 3-2	
Location: Transit/VIP Room, 2 nd floor Aruna Senggigi Resort & Convention	
Chair	Tusta Citta Ihtisan Tri Prasyda, University of Mataram, Indonesia
Presenters	<p>THE EFFECTIVENESS OF INDONESIA'S FISCAL AND MONETARY POLICY ON INEQUALITY REDUCTION DURING PANDEMIC COVID-19 <u>Qorih, Ciplis Gema</u>¹; Sari, Kiky Indah²; <u>Yaqin, Misbahol</u>³; <u>Waluyo, Adiet Try</u>⁴ ¹Department of Economics, Faculty of Economics and Business, University of Jember, Indonesia; ²Research Group of Behavioral Economics on Monetary, Financial, and Development Policy (Benefitly), Faculty of Economics and Business, University of Jember; ³Graduate Programs in Economic, Faculty of Economics and Business, University of Indonesia, Indonesia; ⁴Postgraduate Program of Economics, Sebelas Maret University, Indonesia</p> <p>Socio-Economic Resilience of Yogyakarta City Against the Covid-19 Pandemic <u>Ramadhani, Amesta Kartika</u>; Pitria, Meidesta; Devi, Laksmi Yustika Universitas Gadjah mada, Indonesia</p> <p>VILLAGE FUND IN INDONESIA: Evaluation of Village Funds on Village Community Health <u>Wibowo, Tri</u>¹; <u>Ngasuko, Tri Achya</u>²; Arifin, Bondi² ¹National Research and Innovation Agency, Indonesia; ²Ministry of Finance, Indonesia</p> <p>Strategic Comparative Advantage Improving Health Medical Devices Global Trade and MSMEs Labor Market in Indonesia <u>Arifin, Bondi</u>^{1,4}; Anas, Titik^{1,2}; Wicaksono, Eko¹; Verico, Kiki^{1,3} ¹Ministry of Finance Republic of Indonesia; ²Padjajaran University; ³University of Indonesia; ⁴Prasetiya Mulya University</p>

Parallel Session 3-3

Location: D'Lombok Spa Room, 2nd floor Aruna Senggigi Resort & Convention

Chair	Tri Hanani, University of Mataram, Indonesia
Presenters	<p>INTERACTION AMONG ACTORS TOWARDS ECOTOURISM DEVELOPMENT CASE STUDY: BONJERUK NATIONAL ECOTOURISM VILLAGE Makhroja, Mega Nisfa; Haris Atmaja, Lalu Agung; Sorfina, Manzilina; Savira, Marfi Muallafiatyn; Aryanto, Nadisa Shafira; Munir, Ahmad Mubarak University of Mataram, Indonesia</p> <p>STRENGTHENING TOURISM COMPETITIVENESS TO STRENGTHENING THE CURRENT ACCOUNT BALANCES OF INDONESIA AND TOURISM EXCELLENT COUNTRIES IN ASEAN PUTU WIDANTA, ANAK AGUNG BAGUS UDAYANA UNIVERSITY, Indonesia</p> <p>Economic Valuation for Lusi Island Ecotourism Development through an Environmental Service Approach Santoso, Eko Budi; Umilia, Ema; Siswanto, Vely Kukinul; Koswara, Arwi Yudhi; Setiawan, Nanang Institut Teknologi Sepuluh Nopember, Indonesia</p> <p>Socioeconomic Gap Decomposition of Household Expenditure on Health Before and During Pandemic COVID-19 Sari, Euis Ratna^{1,3}; Setyonaluri, Diahhadji^{1,2} ¹Population and Labor Economics Program, Department of Economics, Faculty of Economics and Business, Universitas Indonesia, Indonesia; ²Demography Institute, Faculty of Economics and Business, Universitas Indonesia, Indonesia; ³Australia Indonesia Health Security Partnership, Australia's Department of Foreign Affairs and Trade , Australia</p>

BKF Special Session 2

Location: Aruna Ballroom 1, 3rd floor Aruna Senggigi Resort & Convention

Chair	Jaka Anggara, University of Mataram, Indonesia
Presenters	<p>Analysis of Spatial Gender Inequality and Regional Economy Karlina, Rina; Hadiarta, Aktiva Primananda Ministry of Finance, Indonesia</p> <p>Subsidy Management Deficiency on State Owned Enterprises in Indonesia Hanifah, Afif¹; Rahardyan, Tri Marhendra²; Safitra, Dhian Adhetiya³; Khabibi, Akhmad³ ¹Ministry of Finance, Indonesia; ²UPN Veteran Jakarta; ³Politeknik Keuangan Negara STAN</p> <p>The Cost Benefit Analysis of Mangrove Rehabilitation in the Coastal Region as the Source of Blue Carbon Storage Sujai, Mahpud Fiscal Policy Agency, Indonesia</p> <p>Analysis of Import Logistics Costs at Indonesian Ports Kusumaningsih, Nugraheni Badan Kebijakan Fiskal, Indonesia</p>

Parallel Session 3-5

Location: Aruna Ballroom 2, 3rd floor Aruna Senggigi Resort & Convention

Chair	Baiq Nikmatul Ulya, University of Mataram, Indonesia
Presenters	<p>The effect of drinking water, sanitation, handwashing facilities, and proportion of open defecation in the community on diarrhea incidence among under five (U5) in Indonesia Chrisnahutama, Adrian; Husna, Afanin; Sukartini, Ni Made Universitas Airlangga, Indonesia</p> <p>The Influence of Education, Mental Health, and Socio-Economic Factors on Smoking in Indonesia Tarani, Ni Putu Mia; Septiavin, Qori'atul; Widiani, Dini; Kautsar, Achmad Pertamina University, Indonesia</p> <p>THE IMPACT ANALYSIS OF CIGARETTE TAX UTILIZATION FOR HEALTH SECTOR ON SMOKING PREVALENCE: PANEL DATA ESTIMATION BETWEEN 2015 AND 2018 Suardi, Ikval; Hidayatina, Achsanah; Nurjati, Eka; Karomah Yaumidin, Umi Badan Riset dan Inovasi Nasional, Indonesia</p> <p>Depression symptoms at the beginning of COVID-19 pandemic Indonesia: the state of selected groups and potential cost implication Siregar, Adiatma Yudistira Manogar; Vadra, Jorghi; Relaksana, Riki; Sihaloho, Estro D; Hardiawan, Donny; Abdurrahimdzan, Ghefiran; Iskandarsyah, Aulia; Herawati, Dewi M.D; Hidayat, Teddy; Sunjaya, Deni K Universitas Padjadjaran, Indonesia</p>

Parallel Session 3-6	
Location: Artist Room, 3rd floor Aruna Senggigi Resort & Convention	
Chair	Hasnia Minanda, University of Mataram, Indonesia
Presenters	<p>Creative Placemaking: Investigating literary tourism in Ubud, Bali Indrawati, Yuyu; Dewi, Leli Kusuma Udayana University, Indonesia</p> <p>Analysis of the Tourism Cluster Model in the Mandalika Region, Lombok, West Nusa Tenggara Firmansyah, M; Saufi, Akhmad; Masrun, Masrun; Irwan, M; Singandaru, Adhitya Bagus University of Mataram, Indonesia</p> <p>INTEGRATING COASTAL AND MARINE TOURISM IN THE MENTAWAI AREA: A CASE STUDY OF KATIET TOURIST AREA Febriamansyah, Rudi¹; Noer, Melinda¹; Yuerlita, Yuerlita¹; Munandar, Anis¹; Sriwidiasyih, Anugrah²; Nur Habibah, Sayyidah³ ¹UNIVERSITAS ANDALAS, Indonesia; ²Universitas Graha Nusantara, Indonesia; ³Fisherwomen Centre Indonesia, Riau Islands Province</p> <p>CREATIVE CITY COMPETITIVENESS ANALYSIS AS A NEW MODEL FOR REGIONAL DEVELOPMENT Fitriana, Widya Andalas University, Indonesia</p>
Parallel Session 3-7	
Location: Aruna Seaview Restaurant, Aruna Senggigi Resort & Convention	
Chair	Siti Hamdiah Rojabi, University of Mataram, Indonesia
Presenters	<p>Being Rational or Not? : Waterscape Perspectives on Sacred Natural Sites Commodification Saraswaty, Amrita Nugraheni¹; Putra, I Komang Sumaryana²; Anandari, I Gusti Agung Ayu Apsari³ ¹Brawijaya University, Indonesia; ²Udayana University, Indonesia; ³UNDIKNAS, Bali, Indonesia</p> <p>Is Higher Fiscal Capacity will be Poverty Rate Lower In Indonesia? Hanim, Wasifah; ---, Fatmawati Universitas Muhammadiyah Bandung, Indonesia</p> <p>Spatial Vulnerability Assessment of Climate Change in Rebana Metropolitan Area, West Java Province Salim, Wilmar; Wijaya, Nurrohman; Ramadhan, Fitrah; Kholifatul Iman, Hanafi Bandung Institute of Technology</p> <p>Economic Valuation of Tojang Spring, East Lombok Mubarok, Lalu Rifki; Afifi, Mansur; Diswandi, Diswandi University of Mataram, Indonesia</p>
Parallel Session 3-8	
Location: Montana Meeting Room 1, Montana Premier Hotel Senggigi	
Chair	Victoria Kusumaningtyas Priyambodo, University of Mataram, Indonesia
Presenters	<p>Trust in Government and Flood Preparedness among Households in Developing Countries' Megacities: The Case of Jakarta, Indonesia Brata, Aloysius Gunadi¹; Resosudarmo, Budy²; Halimatussadiyah, Alin³; Patnasari, Yenny¹ ¹Atma Jaya Yogyakarta University; ²Australian National University; ³University of Indonesia</p> <p>Spatial Analysis of Infrastructure Indicators in Regional Economic Growth in Indonesia; Empirical Study of Comparison between Construction Law No 18 of 1999 and Construction Law No 2 of 2017 Sihombing, Antonius Lambok¹; Hui, Felix Kin Peng²; Colin, Duffield³ ¹LKPP, Indonesia; ²University of Melbourne; ³University of Melbourne</p> <p>Pandemic and Income Distribution: Java in 1920s Brata, Aloysius Gunadi; Triandaru, Sigit; Patnasari, Yenny; Sutarta, Agustinus Edi Atma Jaya Yogyakarta University</p> <p>The Stock Market Efficiency in Indonesia: The Perspective of Stochastic Frontier Analysis Qadri, Resi Ariyasa¹; Arfiansyah, Zef² ¹Polytechnic of State Finance STAN, Indonesia; ²Polytechnic of State Finance STAN, Indonesia</p>

Parallel Session 3-9

Location: Montana Meeting Room 2, Montana Premier Hotel Senggigi

Chair	Paradisa Sukma, University of Mataram, Indonesia
Presenters	<p>Shooting the Wrong Target: Estimating the Opportunity Loss from Inclusion-Errors in Social Assistance Program Yazid, Ega Kurnia¹; Palani, Herman² ¹Centre for Strategic and International Studies, Indonesia; ²Ministry of National Development Planning, Republic of Indonesia</p> <p>If I Got the Program, I Might Not be Poor: Estimating the Cost of the Inclusion and Exclusion Error in Social Assistance Programs in Indonesia Hanri, Muhammad^{1,2}; Iskandar, Sulistiadi Dono²; Moeis, Faizal Rahmanto^{1,2}; Nasrudin, Rus'an¹; Sastiono, Prani^{1,2}; Siregar, Chairina Hanum²; Wiguna, Ghany Ellantia² ¹Faculty of Economics and Business, University of Indonesia; ²Institute for Economic and Social Research, Faculty of Economics, University of Indonesia</p> <p>Political Economy of International Regional Development: Indonesia and Asian Development Bank (ADB) Co-operation or Re-Colonization? Ingratubun, Muhammad Amir IPB University, Indonesia</p> <p>Does Brighter Region Promise a Richer Society and Sustainable Livelihood? Hanri, Muhammad^{1,2}; Iskandar, Sulistiadi Dono²; Moeis, Faizal Rahmanto²; Sholihah, Nia Kurnia²; Fadhilah, Azzah Rana² ¹Faculty of Economics and Business, University of Indonesia; ²Institute for Economic and Social Research, Faculty of Economics and Business, University of Indonesia</p>

Parallel Session 3-10

Location: Naga Restaurant, 1st Floor Aruna Senggigi Resort & Convention

Chair	Muhamad Bai'ul Hak, University of Mataram, Indonesia
Presenters	<p>TECHNICAL EFFICIENCY ANALYSIS OF SMALLHOLDER RUBBER PLANTATION IN INDONESIA Sari, Dyah Wulan¹; Angesti, Muhammad Farandi¹; Setyaningrum, Idfi²; Restikasari, Wenny³ ¹Universitas Airlangga, Indonesia; ²Universitas Surabaya, Indonesia; ³Universitas Negeri Surabaya, Indonesia</p> <p>ORGANIZATIONAL EFFECTIVENESS IN THE EMERGENCE OF COVID-19: EVIDENCE FROM INDONESIAN PUBLIC SECTOR Wibowo, Puji¹; Augustine, Yvonne² ¹Polytechnic of State Finance STAN, Indonesia; ²Trisakti University</p> <p>Comparative Analysis of Determinants of Indonesian Adolescent Depression Mulia, Muhammad¹; Moddilani, Ganiko²; Wijayanti, Ika Yulia¹ ¹SurveyMETER, Indonesia; ²Coordinating Ministry for Economic Affairs Republic of Indonesia</p> <p>Factors of Backward Areas Alleviation in Indonesia: Case Study Three Districts in Sumatera Barat Province Faoziyah, Uly Institut Teknologi Bandung, Indonesia</p>

Poster Session 1

Poster Session 1

Location: Hallway 2nd floor Aruna Senggigi Resort & Convention

Presenters

The Role of Agree Application in Supporting Agriculture Supply Chain and ICT in West Java During Covid-19

Samantha, Audilia¹; Alyssa, Nadya¹; Akmal, Ngakan Made Nabil¹; Larasati, Niken²; Sulyani, Agnesia Candra²; Handayati, Yuanita¹

¹Institut Teknologi Bandung, Indonesia; ²Telkom Corporate University

Policy Response on the Impacts of Covid-19 Pandemic on Unemployment in Indonesia

Muhyiddin, Muhyiddin¹; Putra, Fadillah²

¹Ministry of Manpower, Indonesia; ²University of Brawijaya, Indonesia

THE IMPACT OF CHINA'S COAL-SWITCHING POLICY TO INDONESIAN TRADE PERFORMANCE

Yustiniingsih, Firdausy; Aprillia, Karliana; Muhammad, Indra; Pane, Deasy

Bappenas, Indonesia

Analysis of the Impact of Merger and Acquisition on Financial Sinergy Value

Sarpi, Sarpi; Rizkianto, Eko

University of Indonesia, Indonesia

The Impact of COVID-19 on Labor Income in East Java

Pudjihardjo, M.¹; Putri, Natasya³; Attaqi, Lifya Fillah⁴; Arisetyawan, Kukuh²; Maharatni, Rina Dwi⁵

¹Brawijaya University, Indonesia; ²Brawijaya University, Indonesia; ³Brawijaya University, Indonesia;

⁴State University Of Surabaya, Indonesia; ⁵Bappelitbangda Kab. Pasuruan

Poster Session 2

Poster Session 2

Location: Hallway 2nd floor Aruna Senggigi Resort & Convention

Presenters

The effect of remittances and social assistance on subjective well-being: Evidence from Indonesian household data

Noeraini, Astrid Amalia^{1,2}; Alisjahbana, Armida S.²; Purnagunawan, Raden Muhamad²; Wibowo, Kodrat²

¹Tangerang City Government, Indonesia; ²Universitas Padjadjaran

Impact of Short Movie and Photographic information on the rural tourism industry -Lessons learned from rural tourism in Shiga Prefecture, Japan -

KUROKAWA, Kiyoto

Ritsumeikan University, Japan

THE DEVELOPMENT MODEL OF SMES DIGITAL MARKETING-BASED DURING PANDEMIC

Hariyani, Happy Febrina; Boedirochminarni, Arfida

Universitas Muhammadiyah Malang, Indonesia

Designing an appropriate renewable energy system for small and isolated islands communities

Wibowo, Alan Dwi¹; Pandyaswargo, Andante Hadi²

¹Department of Agroindustrial Technology, Lambung Mangkurat University, Banjarbaru, Indonesia;

²Environmental Research Institute, Waseda University, Tokyo, Japan

TUESDAY, 19TH JULY 2022

Parallel Session 4

<p>CEDS-GIZ Special Session Location: Aruna Grand Ballroom, 3rd floor Aruna Senggigi Resort & Convention</p>	
Chair	Ahmad Komarulzaman, Universitas Padjadjaran, Indonesia
Presenters	<p>What are the economic impacts of Indonesian export ban? a Computable General Equilibrium (CGE) Analysis Samir, Salman¹; Utami, Rizky²; Razak, Muhammad Maula³ ¹Department of Economics, Universitas Hasanuddin, Makassar, Indonesia; ²Department of Accounting, Universitas Hasanuddin, Makassar, Indonesia; ³LOGOV Celebes, Makassar, Indonesia</p> <p>Economic, Social, and Environmental Impact of Renewable Energy Investment: Empirical Study of Indonesia Azzahrah, Shofie¹; Hartono, Djoni^{1,2}; Hastuti, Sasmita Hastri¹ ¹Research Cluster on Energy Modeling and Regional Economic Analysis, Universitas Indonesia; ²Faculty of Economics and Business Universitas Indonesia</p> <p>Environmentally Extended Input-Output Analysis of the Indonesian Economy: The Cost of Greenhouse Gas Emissions and Key Sectors Analysis Pirmana, Viktor Center for Economics and Development Studies, Faculty of Economic and Business, Padjadjaran University, Indonesia</p>
<p>IBER Special Session Location: Malimbu 1, 2nd floor Aruna Senggigi Resort & Convention</p>	
Chair	Putu Geniki Lavinia Natih, D.Phil
Presenters	<p>Economic Recovery and Exit Strategies for G20 Nations in the Midst of the Pandemic Dr. M. Chatib Basri (Lead Co-Chair, T20 Task Force 7 on "International Finance and Economic Recovery")</p> <p>Economic Recovery in the Midst of COVID-19 Prof. Kimura (ERIA)</p> <p>Impacts of COVID-19 on Indonesia's Trade Dr. Lili Yan Ing & Dr. Yessi Vadila (ERIA)</p> <p>YOUTH AND THEIR PROBABILITY TO ENTER MIDDLE-CLASS JOBS DURING COVID-19 PANDEMIC IN INDONESIA Al Ayyubi, Muhammad Salahudin; Pratomo, Devanto Shasta Universitas Brawijaya, Indonesia</p> <p>SECTORAL FOREIGN DIRECT INVESTMENT AND EMPLOYMENT IN INDONESIA: ANALYSIS SPATIAL DATA PANEL APPROACH Lahu, Enggar Paskhalis¹; Susanti, Hera² ¹MPKP, FEB, University of Indonesia, Indonesia; ²FEB, University of Indonesia, Indonesia</p>
<p>Parallel Session 4-1 Location: Malimbu 2, 2nd floor Aruna Senggigi Resort & Convention</p>	
Chair	Prof. Sulhaini Sulhaini, University of Mataram, Indonesia
Presenters	<p>Indonesian Coastal Macroeconomic Performances and Problems Before and During Covid-19 Riyardi, Agung¹; Setiaji, Bambang^{1,2}; Alfaizah, Salma Audiena¹; Hidayah, Nur¹ ¹Universitas Muhammadiyah Surakarta, Indonesia; ²Universitas Muhammadiyah Kalimantan Timur, Indonesia</p> <p>The Covid-19 Pandemic and Changes in People's Social and Economic Behavior Roy, Juliansyah; Suharto, Rahmad Budi; Amalia, Siti; Awaluddin, Muhammad Faculty of Economics and Business, Mulawarman University, Indonesia</p> <p>The Impact of Major Infrastructure Development on Village Planning Case Study: SIBANCEH Toll Road in Lembah Seulawah, Aceh Agustina, Sylvia; Wulandari, Elysa; Caesarina, Irin Universitas Syiah Kuala, Indonesia</p>

Parallel Session 4-2	
Location: Medana 1, 2 nd floor Aruna Senggigi Resort & Convention	
Chair	Dr. Akhmad Saufi, University of Mataram, Indonesia
Presenters	<p>Nudging people to handwash during the pandemic: The use of visual priming and saliency Prasetyo, Dimas¹; Sofyan, Lury¹; Muchtar, Pyan Amin^{1,2}; Piarah, Dwiana³ ¹nudgeplus, Indonesia; ²ERIA; ³Hasanuddin University</p> <p>LOCAL ECONOMIC RESILIENCE IN JAVA DURING COVID-19 PANDEMIC Lisa, Lisa¹; Brata, Aloysius Gunadi^{1,2}; Setyastuti, A.M. Rini¹; Subandi, Nurcahyaningtyas¹ ¹Universitas Atma Jaya Yogyakarta, Indonesia; ²MINDSET Institute</p> <p>Does economic diversity help economic resilience? the agglomeration areas in Java during the COVID-19 pandemic Siburian, Threesya¹; Sari, Dinar Fandan¹; Brata, Aloysius Gunadi^{1,2}; Setyastuti, A.M. Rini¹; Sukamto, Andreas¹ ¹Atma Jaya Yogyakarta University; ²MINDSET Institute</p>
Parallel Session 4-3	
Location: Medana 2, 2 nd floor Aruna Senggigi Resort & Convention	
Chair	Dr. Akhmad Saufi, University of Mataram, Indonesia
Presenters	<p>Economic and Social Defense Model of Local Fishermen Sideman, Ida Ayu Oka Suwati University of Mataram, Indonesia</p> <p>Does Socio-Economic Status Affect to The Happiness? Wulandari, Grace¹; Kautsar, Achmad¹; Handoyo, Felix Wisnu² ¹Faculty of Economics and Business, Universitas Pertamina; ²Research Center for Behavior Economics and Circular , the National Research and Innovation Agency</p> <p>The Influence of Socio-Economic Factors and Marital Status on The Welfare of Women in Indonesia Tarani, Ni Putu Mia; Medina, Isti Dyah; Kautsar, Achmad Pertamina University, Indonesia</p>
Parallel Session 4-4	
Location: Transit/VIP Room, 2 nd floor Aruna Senggigi Resort & Convention	
Chair	Paradisa Sukma, University of Mataram, Indonesia
Presenters	<p>Regional Impact Evaluation of Internet Access on Consumption Per Capita of Poor Households in Indonesia Meilawijaya, Alfira¹; Adji, Ardi² ¹Politeknik Statistika STIS; ²Tim Nasional Percepatan Penanggulangan Kemiskinan (TNP2K)</p> <p>Software Usage Among Indonesian Gamers: Is it good or bad for Indonesia's Economics? Agnestia, Putu Wanda; Sukadana, I Wayan Udayana University, Indonesia</p> <p>The existence of Fintech in Indonesia: Does it really help MSMEs to grow? Devi, Ketut Shanti Cintya; Purbadharmaja, Ida Bagus Putu Udayana University, Indonesia</p>
Parallel Session 4-5	
Location: D'Lombok Spa Room, 2 nd floor Aruna Senggigi Resort & Convention	
Chair	Nina Karina Karim, University of Mataram, Indonesia
Presenters	<p>The Impact of ICT related sectors to the Income Distribution in Indonesia: A Miyazawa Input-Output Model Imansyah, Handry¹; Hartono, Djoni²; Putranti, Titi Muswati³; Muzdalifah, Muzdalifah⁴ ¹Lambung Mangkurat University, Indonesia; ²University of Indonesia, Indonesia; ³University of Indonesia, Indonesia; ⁴Lambung Mangkurat University, Indonesia</p> <p>Digitalization and Economic Growth in ASEAN Nisa, Cintya Khairun; Feriansyah, Feriansyah; Nugroho, Hari; Larre, Aura Asyda Pertamina University, Indonesia</p> <p>A Digitizing Payments Dilemma : Findings from the E-Money Application on Trans Padang Hendri, Davy¹; Rahma Dewi, Nofi¹; Muharia, Fajri² ¹UIN Imam Bonjol Padang, Indonesia; ²Universitas Andalas</p>

Parallel Session 4-6	
Location: Kayu Manis Rooftop Room, 3 rd floor Aruna Senggigi Resort & Convention	
Chair	Lalu Adi Permadi, University of Mataram, Indonesia
Presenters	<p>Decentralization (Special Autonomy) and Regional Economic Development: Experiences from North Region of Papua, Indonesia MOLLET, JULIUS ARY CENDERAWASIH UNIVERSITY, Indonesia</p> <p>Local Government Governance Index: An Integrated Index for Local Development Evaluation in Indonesia Muzayanah, Irfani Fithria Ummul¹; Azizon, A.¹; Nasrudin, Rus'an¹; Noval, Mohammad²; Hanif, Fuadi²; Murwito, Sigit¹; Sulistio, Hery¹; Agustine, Tities Eka¹ ¹Kemitraan; ²Agency for Home Affairs Strategic Policy, Ministry of Home Affairs Republic of Indonesia</p> <p>MEASURING THE PERCEPTIONS OF OFFICIALS, POLITICIANS, AND THE PUBLIC TOWARDS ELECTRONIC VOTING IN INDONESIA Pratama, Rizqi Ayunda^{1,2}; Iskandar, Budi Permadi¹; Wandebori, Harimukti¹; Ping, Teoh Ai² ¹Institut Teknologi Bandung, Indonesia; ²Universiti Sains Malaysia, Malaysia</p>
Parallel Session 4-7	
Location: Artist Room, 3 rd floor Aruna Senggigi Resort & Convention	
Chair	Dr. Lalu M Furkan, University of Mataram, Indonesia
Presenters	<p>Determinants of Rural-Urban Poverty Convergence in Indonesia: An Analysis of Inter-Provincial Data 2000-2020 Priyarsono, Dominicus Savio¹; Wijaya, Miryam BLSK²; Sigiro, Ely Elprida³ ¹IPB University, Indonesia; ²Universitas Katolik Parahyangan, Indonesia; ³Universitas Katolik Parahyangan, Indonesia</p> <p>Family Norm and Social Capital in Indonesia Sukartini, Ni Made¹; Triani, Ni Nyoman Alit²; Haryono, Haryono³; Saputra, Hijrah⁴ ¹Sekolah Pascasarjana Universitas Airlangga, Indonesia; ²Fakultas Ekonomi Universitas Negeri Surabaya; ³Prodi MEK Sekolah Pascasarjana Universitas Airlangga, Indonesia; ⁴Prodi MEK Sekolah Pascasarjana Universitas Airlangga, Indonesia</p> <p>Impact Evaluation of Cooperative Membership on Welfare: Evidence from Captured Fishery Households in Indonesia Taniu, Silviana^{1,2}; Sari, Dyah Wulan²; Wardana, Wahyu Wisnu^{2,3} ¹Universitas Gorontalo; ²Universitas Airlangga; ³Research Institute of Socio-Economic Development (RISED) Surabaya</p>
Parallel Session 4-8	
Location: Aruna Seaview Restaurant, Aruna Senggigi Resort & Convention	
Chair	Dr. Embun Suryani, University of Mataram, Indonesia
Presenters	<p>Risk Preference Impact on Motor Vehicle Taxpayer Compliance Hendri, Davy; Fauzana, Weni; Adilla Arsyi, Wushi UIN Imam Bonjol Padang, Indonesia</p> <p>Sustainable Transport in Jakarta: Lesson Learn Yuliane, Wempie University Andalas, Indonesia</p> <p>START-UP DEVELOPMENT STAGES AT THE BUSINESS INCUBATION CENTER IN THE REGIONAL INNOVATION RESEARCH AGENCY (BRIDA) NUSA TENGGARA BARAT Ochidamoty, Ochidamoty; Nabila, Hesya Nungki; Firmansyah, M University of Mataram, Indonesia</p>

Parallel Session 5

Parallel Session 5-1	
Location: Malimbu 1, 2 nd floor Aruna Senggigi Resort & Convention	
Chair	Victoria Kusumaningtyas Priyambodo, University of Mataram, Indonesia
Presenters	<p>THE EFFECT OF THE COVID-19 PANDEMIC ON THE SUSTAINABILITY OF TRADE BUSINESS IN THE SEKARBELA AREA OF MATARAM CITY Salmah, Emi¹; Ismiwati, Baiq¹; Sriningsih, Siti¹; Insan, Imammul² ¹University of Mataram, Indonesia; ²Universitas Teknologi Sumbawa</p> <p>THE IMPACT OF COVID-19 ON THE ECONOMY, HEALTH, AND POVERTY IN THE PROVINCE OF WEST NUSA TENGGARA Sriningsih, Siti; Suriadi, Irwan; Fatimah, Siti; Salmah, Emi; Wijumulawani, Baiq Saripta University of Mataram, Indonesia</p> <p>Analysis of Home Industry Performance Post Pandemic in the Context of Regional Economic Recovery (Case of Footwear Craft Industry in Ciomas District, Bogor Regency) Sasongko, Hendro¹; Herman, Herman²; Bustomi, Hamzah³ ¹Universitas Pakuan, Indonesia; ²Universitas Pakuan, Indonesia; ³Universitas Pakuan, Indonesia</p>
IRSA Research Supports Awards Session	
Location: Malimbu 2, 2 nd floor Aruna Senggigi Resort & Convention	
Chair	Prof. Djoni Hartono, University of Indonesia, Indonesia
Presenters	<p>The Role of Human Capital and Social Culture in Poverty Reduction in Aceh Province A. Affandi¹; Hakim, Lukman² ¹Universitas Teuku Umar, Indonesia; ²Universitas Sebelas Maret, Indonesia</p> <p>Designing an appropriate renewable energy system for small and isolated islands communities Wibowo, Alan Dwi¹; Pandyaswargo, Andante Hadi² ¹Department of Agroindustrial Technology, Lambung Mangkurat University, Banjarbaru, Indonesia; ²Environmental Research Institute, Waseda University, Tokyo, Japan</p> <p>The Impact of Major Infrastructure Development on Village Planning Case Study: SIBANCEH Toll Road in Lembah Seulawah, Aceh Agustina, Sylvia; Wulandari, Elysa; Caisarina, Irin Universitas Syiah Kuala, Indonesia</p>
Parallel Session 5-3	
Location: Medana 1, 2 nd floor Aruna Senggigi Resort & Convention	
Chair	Dr. Diswandi Diswandi, University of Mataram, Indonesia
Presenters	<p>STRUCTURAL EQUATION MODELING OF DIGITAINABILITY SME'S RURAL TOURISM IN MALAYSIA: POST PANDEMIC RECOVERY STRATEGIC PATHWAY Sharin, Farah Hida; Malik, Ilham Sentosa Anwar; Osman, Muhamad Zulkiflee; Hj. Ahmad, Arman Universiti Kuala Lumpur Business School, MALAYSIA</p> <p>Corporate Governance and Financial Performance in an Ever-Digitizing Financial Industry in Indonesia Tulung, Joy Elly¹; Massie, Natanael Waraney Gerald² ¹Universitas Sam Ratulangi; ²Universitas Indonesia</p> <p>Internet Utilization and Indonesian Women Entrepreneurs During the Covid-19 Pandemic Nur Asrofi, Dien Amalina; Pratomo, Devanto Shasta; Pangesty, Farah Wulandari Universitas Brawijaya, Indonesia</p>
Parallel Session 5-4	
Location: Medana 2, 2 nd floor Aruna Senggigi Resort & Convention	
Chair	Dr. Embun Suryani, University of Mataram, Indonesia
Presenters	<p>Rise and Fall of New Technology: Quasi-experimental Evidence from a Developing Country Miyata, Sachiko¹; Sawada, Yasuyuki²; Takakura, Kazuma³ ¹Ritsumeikan University, Japan; ²The University of Tokyo, Japan; ³The University of Tokyo, Japan</p> <p>Regional Analysis of Cash and In-kind Food Assistance: Impact of Rastra and BPNT Programs to Meet Daily Calorie Needs in Indonesia Hidayat, Fatqur¹; Hanri, Muhammad² ¹Ministry of Finance of The Republic of Indonesia; ²Faculty of Economics and Business, University of Indonesia</p>

	<p>Regional Development in Indonesia's Maritime Borders: Case Study of Kepulauan Anambas Regency Rahman, Arief; Murtadho, Alfin Center for Regional System Analysis Planning and Development IPB University, Indonesia</p>
<p>Parallel Session 5-5 Location: Transit/VIP Room, 2nd floor Aruna Senggigi Resort & Convention</p>	
Chair	Vici Handalusia Husni, University of Mataram, Indonesia
Presenters	<p>Mandatory Child Immunization during the COVID-19 Pandemic: Are We Neglecting It? Febiandita, Sylvia; Salsabilla, Tsania Maulina; Ramadhan, Kelvin Universitas Gadjah Mada, Indonesia</p> <p>RATE OF RETURN TO EDUCATION IN BULELENG DISTRICT, BALI PROVINCE: ECONOMIC AND SOCIAL APPROACH Purwanti, Putu Ayu Pramitha; Dewi, I Gusti Ayu Manuati; Suasih, Ni Nyoman Reni Universitas Udayana, Indonesia</p> <p>INFORMATION GAPS AND HIGHER EDUCATION SCHOLARSHIP APPLICATION: EVIDENCE FROM RANDOMIZED FIELD EXPERIMENT Mulyaningsih, Tri¹; Dong, Sarah²; Suryandari, Retno Tanding¹; Miranti, Riyana³ ¹Universitas Sebelas Maret, Indonesia; ²Australian National University, Australia; ³University of Canberra, Australia</p>
<p>Parallel Session 5-6 Location: D'Lombok Spa Room, 2nd floor Aruna Senggigi Resort & Convention</p>	
Chair	Nina Karina Karim, University of Mataram, Indonesia
Presenters	<p>The Effectiveness of Movement Restriction Policy to COVID-19 Infections and its Impact on Economic Growth: Study Case Indonesia Nugroho, Aditya Harin¹; Wisana, I Dewa Gede Karma^{1,2} ¹Demographic Institute Faculty of Economic and Business Universitas Indonesia, Indonesia; ²Faculty of Economic and Business Universitas Indonesia</p> <p>Two Decades of Multidimensional Poverty Dynamics in Indonesia: Lesson Learned and Policy Implications Dartanto, Teguh¹; Natih, Putu Geniki Lavinia¹; Kanagaratnam, Usha² ¹Faculty of Economics and Business, Universitas Indonesia, Indonesia; ²Oxford Poverty and Human Development Initiative, the University of Oxford, UK</p> <p>SOCIAL ECONOMIC IMPACT OF COVID-19 AND POTENTIAL PROGRAMS FOR MANAGING IT IN THE CITY OF PADANG Wira, Ahmad; ADIF, RIANDY MARDHIKA; Mizan, Al; Deri, Aslan; Sari, Lola Maya UIN IMAM BONJOL PADANG, Indonesia</p>
<p>Parallel Session 5-7 Location: Aruna Ballroom 1, 3rd floor Aruna Senggigi Resort & Convention</p>	
Chair	Lalu Adi Permadi, University of Mataram, Indonesia
Presenters	<p>Is Farmer Group Still Relevant? Impact Evaluation of Farmer Group Participation on Maize Productivity in Indonesia Wardana, Wahyu Wisnu^{1,2}; Haryanto, Tri¹ ¹Universitas Airlangga, Indonesia; ²Research Institute of Socio-Economic Development (RISED) Surabaya</p> <p>Assessing the Role of Sectoral Economics on Poverty and Inequality during Covid-19 Wardhono, Adhitya¹; Yunita, Mela²; Qoriah, Ciplis Gema¹; Nasir, M. Abd¹ ¹Department of Economics, Faculty of Economics and Business, University of Jember, Indonesia; ²Department of Agricultural Economics, Faculty of Economics and Management, IPB University, Indonesia</p> <p>Conditional Cash Transfer and Early Marriage: A Case Study of Mataram City, West Nusa Tenggara Hartarto, Romi Bhakti; Wibowo, Wahyu Tri Universitas Muhammadiyah Yogyakarta, Indonesia</p>
<p>Parallel Session 5-8 Location: Aruna Ballroom 2, 3rd floor Aruna Senggigi Resort & Convention</p>	
Chair	Dr. Lalu M Furkan, University of Mataram, Indonesia
Presenters	<p>Assesing The Impact of Digitalization on Economic Growth During Covid-19 in Indonesia Wardhono, Adhitya¹; Yunita, Mela²; Putra, Panji TN³; Aprilia, Ariz⁴ ¹Department of Economics, Faculty of Economics and Business, University of Jember; ²Department of Agricultural Economics, Faculty of Economics and Management, IPB University, Indonesia; ³Program Officer at The Prakarsa, Jakarta Capital Special Region, Indonesia; ⁴Research Fellow in</p>

	<p>Academy of Macroeconomics Monetary and Market, Bank Indonesia Institute, Jakarta Capital Special Region, Indonesia</p> <p>Socioeconomic and Labor Market Impacts of Digital Platforms: Evidence from Indonesia's First Technology Decacorn</p> <p>Fukuya, Sakina²; Rizky, Mayang³; Suryadarma, Daniel¹; Suryahadi, Asep³ ¹Asian Development Bank Institute, Japan; ²University of Tokyo; ³The SMERU Research Institute</p> <p>Interregional Assessments of MSME Credit Channeling amid the Pandemic: Analyzing the Role of the Digital Business Environment</p> <p>Sapulette, Militcyano Samuel¹; Effendi, Nury²; Dewi, Vera Intanie³; Hastuti, Fitri²; Ervani, Eva²; Priyono, Anhar Fauzan² ¹Economic Research Institute for ASEAN and East Asia, Indonesia; ²Center for Economics and Development Studies, Universitas Padjadjaran, Indonesia; ³Fakultas Ekonomi, Universitas Parahyangan</p>
<p>Parallel Session 5-9 Location: Kayu Manis Rooftop Room, 3rd floor Aruna Senggigi Resort & Convention</p>	
Chair	Muhamad Bai'ul Hak, University of Mataram, Indonesia
Presenters	<p>Leap-Frogging Effect of Technology to Economic Growth (Case of Developing & Developed Countries Digital Technology Usage)</p> <p>Amirudin, M.A; Heriyaldi, Heriyaldi Padjadjaran University, Indonesia</p> <p>Do People Own Less Private Vehicles Locally Due to Public Transport Improvement?</p> <p>Ilyas, Dhaniel Vrije Universiteit Amsterdam, Netherlands, The</p> <p>Potential Leading Sector to Drive Economic Growth in West Nusa Tenggara Province</p> <p>Fadli, Muhammad Dzul; Bai'ul Hak, Muhamad; Hidayat, Ali Akbar University of Mataram</p>
<p>Parallel Session 5-10 Location: Artist Room, 3rd floor Aruna Senggigi Resort & Convention</p>	
Chair	Jaka Anggara, University of Mataram, Indonesia
Presenters	<p>An ESG Analysis: Do Local Governments Maintain Their Governance In Line with Sustainability Amidst COVID-19 Pandemic?</p> <p>Putri, Desi Riana Prasetya¹; Nurfiningrum, Erista²; Hendrocahyo, Hendrocahyo¹ ¹Ministry of Finance, Indonesia; ²Coordinating Ministry for Economic Affairs, Indonesia</p> <p>The Resilience of Disaster Management in Small Island Region in Handling Multiple Disasters During COVID-19 Pandemic.</p> <p>Rahmayanti, Krisna Puji University of Indonesia, Indonesia</p> <p>Intergovernmental Road Infrastructure Spending Overlaps at Locust Point: Impediment or Catalyst for Outcome Improvement?</p> <p>Rinaldi, Rullan; Dayanti, Miryana Vinka; Sedyadi, Gema Satria Mayang Prospera, Indonesia</p>
<p>Parallel Session 5-11 Location: Aruna Seaview Restaurant, Aruna Senggigi Resort & Convention</p>	
Chair	Ahmad Zaenal Wafik, University of Mataram, Indonesia
Presenters	<p>A Study of Perception from Business Owner's Perspective on Corporate Social Responsibility Program of Economic Development at Mining Companies in West Sumbawa</p> <p>Suryawati, Baiq Nurul¹; Burhanudin, Burhanudin¹; Surasni, Ni Ketut¹; Nururly, Santi¹; Fadah, Isti²; Awwaliyah, Intan Nurul² ¹University of Mataram, Indonesia; ²Jember University</p> <p>Better spending quality through complementarity: Case study of infrastructure spending at school level</p> <p>Zufri, Dillon; Tresnatri, Florischa Ayu; Rinaldi, Rullan; Ash Shidqi, Muhammad Hazmi Prospera (Australia Indonesia Partnership for Economic Development)</p> <p>The Role of Extension on National Featured Plantation in Indonesia: A Stochastic Frontier Analysis</p> <p>Restikasari, Wenny¹; Wulan Sari, Dyah² ¹Universitas Negeri Surabaya, Indonesia; ²Universitas Airlangga, Indonesia</p>

Parallel Session 6

<p>Parallel Session 6-1 Location: Malimbu 1, 2nd floor Aruna Senggigi Resort & Convention</p>	
Chair	Tri Hanani, University of Mataram, Indonesia
Presenters	<p>Predicting online consumer purchase intention toward agri-food products amid Covid-19: Evidence from Indonesia Suprehatin, Suprehatin; Harianto, Harianto IPB University, Indonesia</p> <p>Reemployment during the Pandemic of Covid-19 in Indonesia: Who can be reemployed? Dartanto, Teguh¹; Susanti, Hera¹; Augustin, Eldest²; Fitriani, Kania² ¹FEB Universitas Indonesia; ²Social Security Agency for Employment, Indonesia</p> <p>Disability and Reemployment Opportunities in Pandemic Period Wahyudi, Dwi^{1,2}; Hanri, Muhammad¹ ¹University of Indonesia, Indonesia; ²BPS</p> <p>INSTITUTIONAL SYNERGITY MODEL IN DEVELOPMENT TOURISM VILLAGE IN EAST LOMBOK REGENCY. Wahyunadi, Wahyunadi; Afifi, Mansur; Firmansyah, Muhammad unram, Indonesia</p>
<p>Parallel Session 6-2 Location: Malimbu 2, 2nd floor Aruna Senggigi Resort & Convention</p>	
Chair	Tusta Citta Ihtisan Tri Prasyda, University of Mataram, Indonesia
Presenters	<p>Can Education Become Entrepreneurial Ticket for Women? Evidence from Indonesia Astuti, Riska Dwi¹; Rudatin, Ari² ¹Universitas Islam Indonesia, Indonesia; ²Universitas Islam Indonesia, Indonesia</p> <p>Germany Foreign Assistance: The Contribution of Forestry Products for Laos' Economic Efficiency Chansombuth, Soulivanh Ritsumeikan Univeristy, Japan</p> <p>Determinants of Maize Productivity in East Java: Evidence from Micro Data Dwi Brintanti, Annisaa Rizky¹; Margani, Avicenna Deskartian²; Irza, Aryudita Maulana³ ¹Universitas Airlangga, Indonesia; ²Universitas Airlangga, Indonesia; ³Universitas Airlangga, Indonesia</p> <p>SYNERGY OF HAJJ FUND INVESTMENT TOWARDS ISLAMIC SOCIAL FINANCE IN INDONESIA Hulwati, Hulwati; Mujiono, Slamet Universitas Islam Negeri Imam Bonjol Padang, Indonesia</p>
<p>Parallel Session 6-3 Location: Medana 1, 2nd floor Aruna Senggigi Resort & Convention</p>	
Chair	Baiq Nikmatul Ulya, University of Mataram, Indonesia
Presenters	<p>Nonlinear Effects of Age Structure on Economic Growth In Indonesia Fitri, Annisa; Nugroho, Hari; Feriansyah, Feriansyah; Wahyuni, Sri Pertamina University, Indonesia</p> <p>The Impact of Tax Revenue on Economic Growth: Evidence from Developing Countries in ASEAN Wahyuni, Sri; Nugroho, Hari; Feriansyah, Feriansyah; Fitri, Annisa Pertamina University, Indonesia</p> <p>Sectoral Foreign Direct Investment and Economic Growth: An Application ARDL Approach in Indonesia Larre, Aura Asyda; Feriansyah, Feriansyah; Nugroho, Hari; Nisa, Cintya Khairun Pertamina University, Indonesia</p> <p>The Effect of Covid-19 on Direct Investment in Fourteen Sectors in Indonesia Oen, Nadine Marijke; Yustiana, Nia; Utami, Nadia Restu; Nafisa, Ferinda; Cancerio, Billy; Lutfia, Deba Parahyangan Catholic University, Indonesia</p>

Parallel Session 6-4	
Location: Medana 2, 2 nd floor Aruna Senggigi Resort & Convention	
Chair	Hasnia Minanda, University of Mataram, Indonesia
Presenters	<p>Natural Resources And Export Diversification: An Indonesian Sub-Regional Analysis Pane, Deasy; Yustiningsih, Firdaussy; Setyorani, Bakti; Muhammad, Indra Ministry of National Development Planning of Indonesia (Bappenas), Indonesia</p> <p>THE ROLE OF SPACES FOR BALANCING SDG's GOALS BY 2030 Permatasari, Destarita Kementerian Agraria dan Tata Ruang / Badan Pertanahan Nasional, Indonesia</p> <p>The Stock Market Efficiency in Indonesia: The Perspective of Stochastic Frontier Analysis Qadri, Resi Ariyasa¹; Arfiansyah, Zef² ¹Polytechnic of State Finance STAN, Indonesia; ²Polytechnic of State Finance STAN, Indonesia</p> <p>Determinant of Export Diversification in Indonesia Rohmawati, Hilda; Pane, Deasy; Alam, Oktavia; Setyorani, Bakti Ministry of National Development Planning, Indonesia</p> <p>The West Nusa Tenggara SMEs Development by Maximizing the Virtual Capital of Doers Bagis, Abdul Azis University of Mataram, Indonesia</p>
Parallel Session 6-5	
Location: Transit/VIP Room, 2 nd floor Aruna Senggigi Resort & Convention	
Chair	Siti Hamdiah Rojabi, University of Mataram, Indonesia
Presenters	<p>IS ECONOMIC GROWTH AFFECTED BY BASIC INFRASTRUCTURE ? : (STUDY IN NORTH MALUKU) Runtuuwu, Prince Charles Heston; Husen, Amran University of Khairun, Indonesia</p> <p>PUBLIC POLICY ANALYSIS TOWARD INVESTMENT MAGNETISM: CASE STUDY OF OMNIBUS LAW MODEL ON MINIMUM WAGES SECTOR Rumondang, Haiyani¹; Hamzah, Muhammad Zilal²; Sofilda, Eleonora³; Daud, Aidir Amin⁴ ¹Universitas Trisakti/Ministry of Manpower, Indonesia; ²Universitas Trisakti, Indonesia; ³Universitas Trisakti, Indonesia; ⁴Universitas Hasanuddin</p> <p>Financial Deepening, Competition, Competitiveness: Indonesia's Banking Industry in an Open Environment Santoso, Teguh; Sapulette, Militcyano Samuel; Anas, Titik Center for Economics and Development Studies, Universitas Padjadjaran, Indonesia</p> <p>Economic Recession In North Maluku; The New Keynesian Model Waibot, Zulkifly; Mala, Said Universitas Khairun, Indonesia</p>
Parallel Session 6-6	
Location: D'Lombok Spa Room, 2 nd floor Aruna Senggigi Resort & Convention	
Chair	Ihyana Hulfa, University of Mataram, Indonesia
Presenters	<p>FDI SPILLOVERS AND THE WAGES GAP IN INDONESIA Yasin, Mohammad Zeqi¹; Muchtar, Pyan Putro Surya Amin²; Arifin, Nur³ ¹Department of Economics, Universitas Jember, Indonesia; ²Economic Research Institute for ASEAN and East Asia (ERIA), Indonesia; ³Badan Pusat Statistik, Indonesia</p> <p>The Impact of Economic Crisis on 2008 and Corona Virus Disease 2019 on the Efficiency and Productivity of the Container Terminal in Tanjung Perak, Surabaya, East Java Afiatno, Bambang Eko; Joyoutomo, Karno Dwi Universitas Airlangga, Indonesia</p> <p>The Initial Impacts of the COVID-19 Pandemic on Regional Economies and Income Inequality in Indonesia: A Bi-dimensional Inequality Decomposition Analysis Akita, Takahiro¹; Alisjahbana, Armida Salsiah² ¹International University of Japan, Japan; ²Universitas Padjadjaran, Indonesia</p> <p>Impact of COVID-19 on Indonesia's Top Five Export Commodities Lestari, Nindya¹; Nugraheni, Reninta Dewi² ¹Universitas Tanjungpura, Indonesia; ²BRIN</p>

Parallel Session 6-7	
Location: Aruna Ballroom 1, 3 rd floor Aruna Senggigi Resort & Convention	
Chair	Muhamad Bai'ul Hak, University of Mataram, Indonesia
Presenters	<p>DEBT AND HAPPINESS IN VARIOUS INCOME GROUPS: EVIDENCE FROM IFLS PURWANTO, EDY¹; SUKARTINI, NI MADE²; GIRIK ALLO, ALBERTUS³ ¹SurveyMETER, Indonesia; ²Airlangga University, Surabaya, East Java, Indonesia; ³University of Papua, Manokwari, Papua Barat, Indonesia</p> <p>LONG-TERM IMPACTS OF DEBT AND HAPPINESS: EVIDENCE FROM IFLS PURWANTO, EDY¹; SUKARTINI, NI MADE²; GIRIK ALLO, ALBERTUS³; UMAROH, RODHIAH⁴ ¹SurveyMETER, Indonesia; ²Airlangga University, Surabaya, East Java, Indonesia; ³University of Papua, Manokwari, Papua Barat, Indonesia; ⁴SurveyMETER, Indonesia</p> <p>Parent's Socioeconomic Status and Girl's Education Achievement in East Indonesia Amalia, Nisya; Syamsulhakim, Ekki Universitas Padjadjaran, Indonesia</p>
Parallel Session 6-8	
Location: Artist Room, 3 rd floor Aruna Senggigi Resort & Convention	
Chair	Rizal Kurniansyah, University of Mataram, Indonesia
Presenters	<p>Beggars Are (Rational) Humans Too : His Exploitation Phenomenon Hendri, Davy; Fikri, Risyadil; King, Irsadunas UIN Imam Bonjol Padang, Indonesia</p> <p>Implementation of Fiscal Policy Allocation for The Development of Small Island Area as a Center for Sustainable Growth in The Country Border Regency in Anambas Island Regency Riau Island Province Marif, Samsul Diponegoro University, Indonesia</p> <p>ANALYSIS OF APPLICATION OF LOCAL GOVERNMENT INFORMATION SYSTEMS IN THE FRAMEWORK OF FINANCIAL DATA INPUT EFFECTIVENESS Nuralia, Indah Fitriani; Nurabiah, Nurabiah; Lestari, Baiq Anggun Hilendri University of Mataram, Indonesia</p>
Parallel Session 6-9	
Location: Kayu Manis Rooftop Room, 3 rd floor Aruna Senggigi Resort & Convention	
Chair	Victoria Kusumaningtyas Priyambodo, University of Mataram, Indonesia
Presenters	<p>Does Cronyism (Nepotism) Pay ? Costly Hiring Your Family Member In Culinary Business Hendri, Davy¹; Nurmina, Nurmina²; Hakim, Lukmanul¹ ¹UIN Imam Bonjol Padang, Indonesia; ²Universitas Negeri Padang</p> <p>'Til Unemployment Do Us Part : The Anti-Cycle Divorce In Indonesian Case Hendri, Davy¹; Maulana, Ilham¹; Muharja, Fajri² ¹UIN Imam Bonjol Padang, Indonesia; ²Universitas Andalas</p> <p>Who are those who dare to quit their jobs from the (Conventional) Bank? Hendri, Davy; Rangga, Wisanggara; Erfinda, Erfinda; Hakim, Lukmanul UIN Imam Bonjol Padang, Indonesia</p> <p>(Un)Sustainable Effects of Foreign Currency Borrowing From Asian Development Bank Loans: A Neural Network Analysis Ingratubun, Muhammad Amir IPB University, Indonesia</p>

Parallel Session 6-10

Location: Aruna Ballroom 2, 3rd floor Aruna Senggigi Resort & Convention

Chair	Dr. Diswandi Diswandi, University of Mataram, Indonesia
Presenters	<p>How urban form moderating mental distress due to the COVID-19 pandemic: Evidence from Jakarta, Indonesia Nugraha, Usep^{1,3}; Resosudarmo, Budy P.²; Nasrudin, Rus'an¹ ¹Department of Economics, Faculty of Economics and Business, Universitas Indonesia, Indonesia; ²Arndt-Corden Department of Economics, Crawford School of Public Policy, Australian National University, Australia; ³Statistics Indonesia, Indonesia</p> <p>GENDER EQUALITY IN THE MIDDLE OF THE COVID-19 PANDEMIC IN THE LABOR MARKET Setyari, Ni Putu; Saskara, Ida Ayu Nyoman; Sarjana, I Made Bram; Kusuma, I Wayan Gita Ayu Universitas Udayana, Indonesia</p> <p>Understanding urban residents' Psychological Health during the COVID-19 pandemics: Does stocking up on food matter? Nugroho, Tri Wahyu; Rahman, Moh. Shadiqur; Toiba, Hery Brawijaya University, Indonesia</p> <p>The Impact of Indonesia's Large-Scale social Restrictions on Households Consumption and Short-Term Poverty Dynamics Samuda, Sri Juli Asdiyanti; Nasrudin, Rus'an Univeristy of Indonesia, Indonesia</p>

Parallel Session 6-11

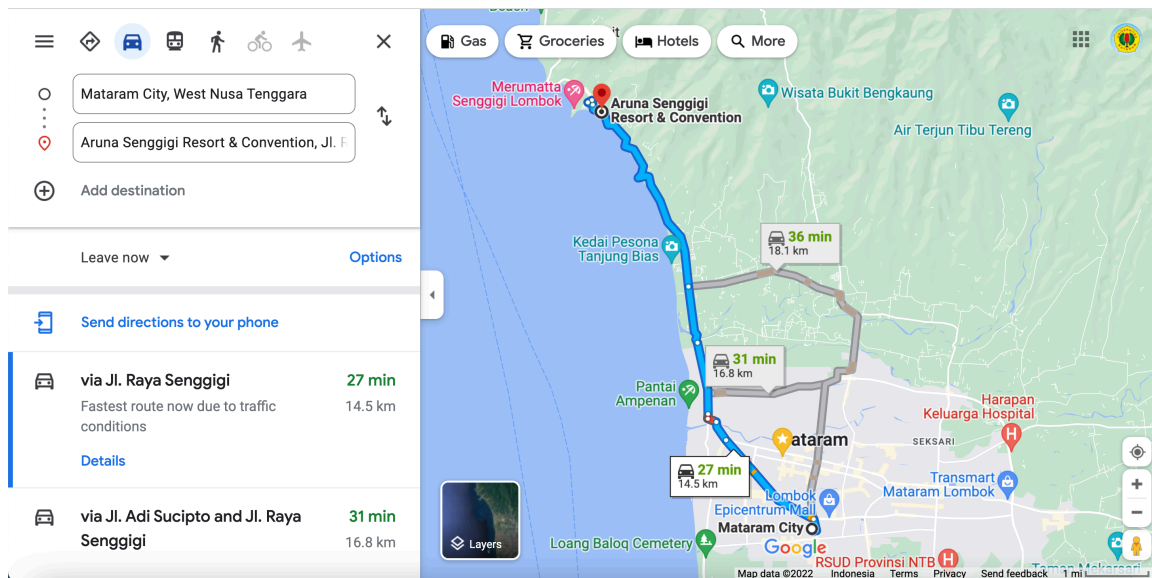
Location: Aruna Seaview Restaurant, Aruna Senggigi Resort & Convention

Chair	Paradisa Sukma, University of Mataram, Indonesia
Presenters	<p>Social and economic impact of Covid-19 in Mentawai Islands, West Sumatra, Indonesia YONARIZA, Yonariza Andalas Univ., Indonesia</p> <p>ANALYSIS OF THE LEADING ECONOMIC SECTOR OF THE ISLANDS PROVINCE IN INDONESIA BEFORE AND DURING THE COVID-19 PANDEMIC Suasih, Ni Nyoman Reni¹; Saskara, Ida Ayu Nyoman¹; Wijaya, Putu Yudy²; Yudha, I Made Endra Kartika¹ ¹Faculty of Economics and Business, Udayana University, Indonesia; ²Faculty of Economics Business and Tourism, Hindu Indonesia University, Indonesia</p> <p>Small island's mobility in times of COVID-19: Insights from Sangihe, Indonesia. Talib, Naimah Lutfi Abdullah^{1,2}; Utomo, Ariane¹; Limbengpiah, Fransiska³ ¹School of Geography, Earth, and Atmospheric Sciences (SGEAS), the University of Melbourne, Australia; ²Research Centre for Society and Culture, the National Research and Innovation Agency (PMB BRIN); ³Independent social researcher based in the Kabupaten Kepulauan Sangihe, North Sulawesi Province, Indonesia.</p>

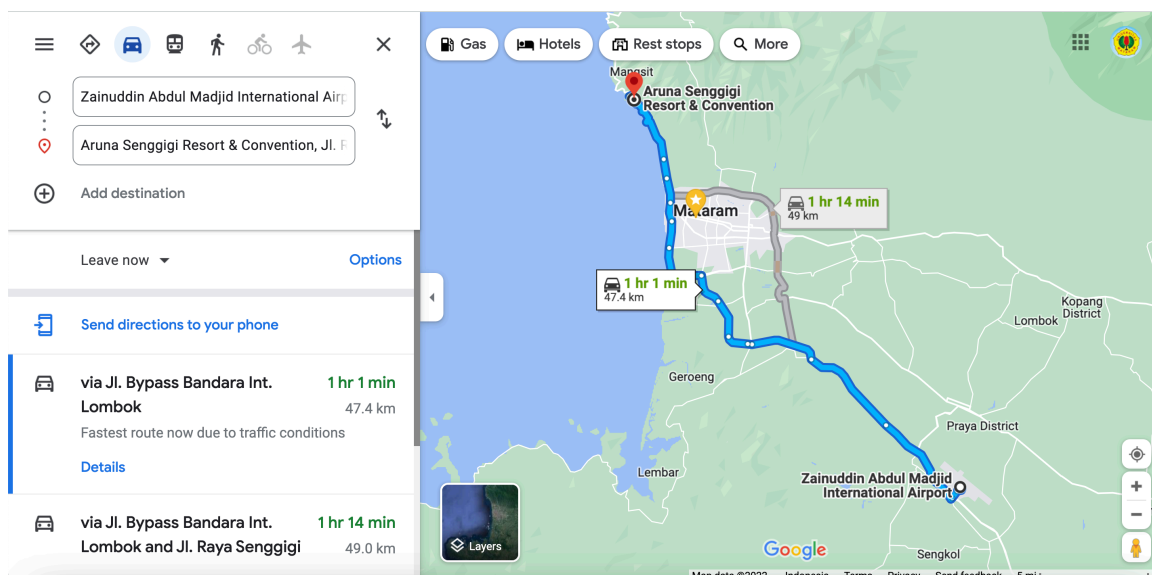
CONFERENCE LOCATION

GOOGLE MAPS

From Mataram to the Aruna Senggigi Resort and Convention

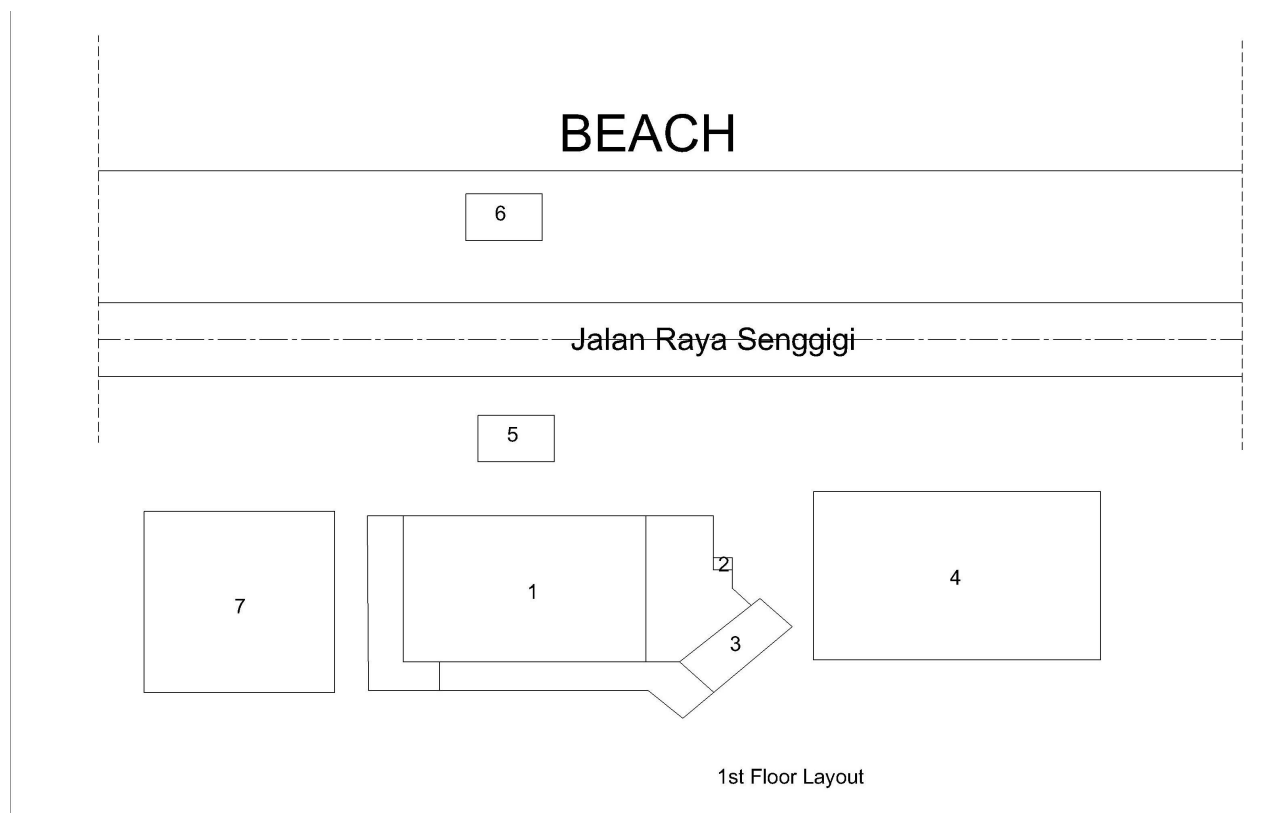


From the Lombok International Airport to the Aruna Senggigi Resort and Convention



SITE MAPS

1st Floor



Legend :

1. Pandan All Day Dining

2. Lift

3. Escalator

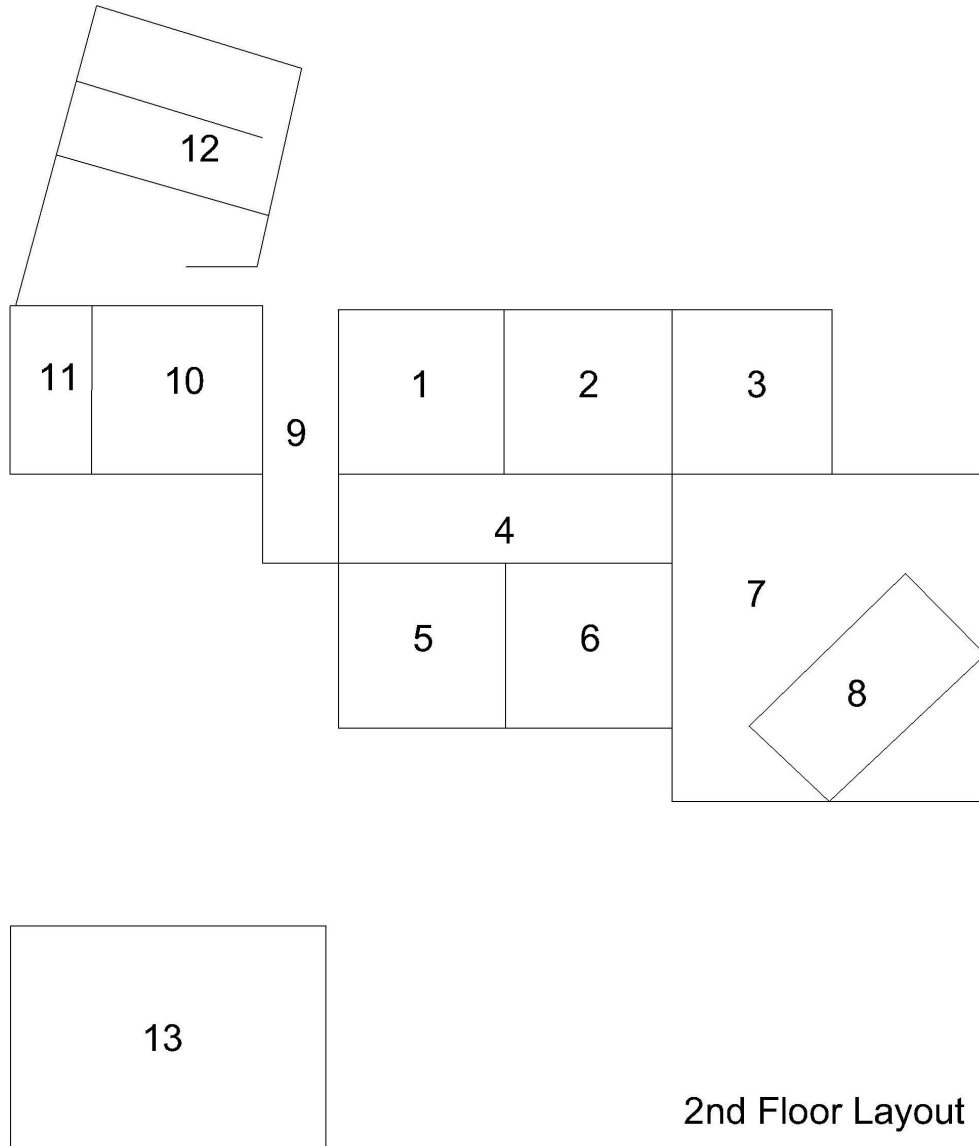
4. Lobby

5. Naga Restaurant

6. Aruna Seaview Restaurant

7. Montana Premier Senggigi Hotel (Montana Meeting Room 1-3)

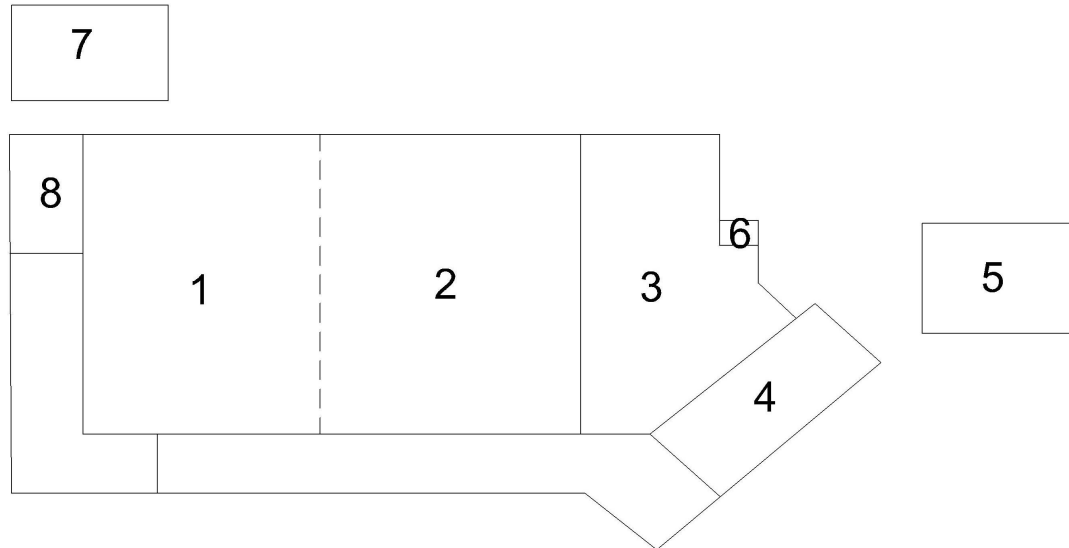
2nd Floor



Legend :

1. Malimbu 1	6. Medana 2	11. Emergency Stairs
2. Malimbu 2	7. Sponsor Booth & Poster Session	12. Washroom
3. Transit/VIP	8. Escalator	13. D'Lombok Spa Room
4. Hallway	9. Hallway	
5. Medana 1	10. Musholla	

3rd Floor



3rd Floor Layout

Legend :

1. Aruna Ballroom 1

2. Aruna Ballroom 2

1&2. Aruna Grand Ballroom

3. Hallway

4. Escalator

5. Kayu Manis Rooftop Room

6. Lift

7. Artist Room

8. Emergency Stairs



Faculty of Economics & Business
University of Mataram

PUBLISHED BY THE 17th IRSA INTERNATIONAL CONFERENCE COMMITTEE 2022