

Artikel Darma

by Jdm Unnes

Submission date: 27-Oct-2021 07:44AM (UTC+0700)

Submission ID: 1685116854

File name: Artikel_Darma.docx (221.02K)

Word count: 5793

Character count: 30955



'Monte Carlo Simulation' Predicting on the Movement of Investments – During the Covid Pandemic in Indonesia

Info Article

History Article:

Submitted

Revised

Accepted

Keywords:

rate of return;
investments; MCS;
probability distribution;
Indonesia; covid-19.

Abstract

66
67
The movement of the net asset value (NAV) of mutual fund products (MFP) whether high or low in the Covid-19 pandemic conditions in 2020. With the support of the Monte Carlo Simulation (MCS), this study intends to predict the rate of return on mutual fund investment (MFI) providing a choice of the average demand for return on mutual funds (MFR) that investors need. Analysis of the prediction of NAV movements and the rate of return on MFI in 55 MFP with a trial frequency of 48 times, we get an estimate of the average demand for MFR of 37 out of 100 cumulative numbers of probability distributions. The result is 77.08 percent, and an estimated average MFR in Indonesia during the 2020 Covid-19, the simulation got was IDR 421,954. The contribution resulted in a vital discovery of NAV in Indonesia in response to the economic recession affected by Covid-19.

Prediksi Simulasi 'Monte Carlo' untuk Pergerakan Investasi – Selama Pandemi Covid di Indonesia

Abstrak

68
69
Pergerakan nilai aset bersih (NAV) produk reksa dana (MFP) baik tinggi maupun rendah dalam kondisi pandemi Covid-19 tahun 2020. Dengan dukungan Simulasi Monte Carlo (MCS), studi ini bermaksud untuk memprediksi tingkat pengembalian investasi reksa dana (MFI) memberikan pilihan rata-rata permintaan pengembalian reksa dana (MFR) yang dibutuhkan investor. Analisis prediksi pergerakan NAV dan tingkat pengembalian MFI di 55 MFP dengan frekuensi percobaan 48 kali, kami mendapatkan perkiraan rata-rata permintaan MFR 37 dari 100 jumlah kumulatif distribusi probabilitas. Hasilnya 77,08 persen, dan perkiraan rata-rata MFR di Indonesia selama Covid-19 2020, simulasi yang didapat adalah Rp421.954. Kontribusi menghasilkan penemuan vital terhadap NAV di Indonesia sebagai respon dari resesi ekonomi yang terdampak oleh Covid-19.

JEL Classification: G31, D25, C15, C25

1
How to Cite: Author's name. (20...). Title of the article. *Jurnal Dinamika Manajemen*, Vol(No), xx-xx

ISSN

2086-0668 (print)

2337-5434 (online)

DOI: xxxxxxxxxx

INTRODUCTION

Nowadays, many mutual fund investors wish to get high returns by using various sophisticated techniques and methods (Azis et al., 2021). In this research, the simulation method approach has been applied Lee et al. (2014) to evaluate the trend of changes in the NAV of mutual funds, then determine the weights in the valuation function to select the right equity mutual fund (EMF) portfolio that can maximize of MFI return. Meanwhile, the contribution and special urgency in this research is to develop this method through MCS in conditions of economic recession because of global shocks, such as Covid-19. In addition, Lee et al. (2014) apply a GEP-based program, where this technique has weaknesses and needs to be improved by focusing on one period through a trend each month.

In mutual funds, the investment manager manages the funds placed in securities and realizes profits or losses, as well as receives dividends or interest, which are recorded in NAV. NAV is the amount of publicly managed funds collected in a mutual fund entrusted to an investment company manager (Mohanti & Priyan, 2018). Since being introduced in 1976, mutual funds have always progressed well, as can see from the total NAV, the number of mutual funds, and investment units that continued to grow throughout the year. The participation unit itself has a definition as a unit of investment ownership in mutual funds.

The development of the number of mutual funds over the last 5 years, namely from 2015 to 2020, has experienced a significant increase where the number of mutual funds in 2015 was 1091 and in 2020 it has reached 2219 mutual funds. NAV generated by many mutual funds also increased from year to year. In 2015 the NAV of mutual funds was IDR 271,969.00 billion, in 2016 it was IDR 338,749.81 billion, in 2017 it was IDR 457,506.57 billion, in 2018 it was IDR 505,390.30 billion, in 2019 it was IDR 542,196.36 billion, and in 2020 it continued to increase to reach IDR 573,542.15 billion. Meanwhile, mutual fund participation units in 2015 182,980,302,630.53 skyrocketed to 435,143,042,392.00 in 2020. This shows that the public's attractiveness to mutual funds is quite high because mutual funds can provide greater returns than the market if investors choose mutual funds correctly according to their objectives the investment.

The type of mutual fund studied is EMF with various considerations and EMF have volatility (Livingston et al. 2019) higher than other types of mutual funds. The achievement of optimal mutual funds investment return in this study using the MCS. Many researchers have used the MCS approach (Gimpelevich, 2011; Piranfar & Masood, 2012; Amédée-Manesme et al., 2013; Li et al., 2020), but the objective of this study is different. The objective of this research is to emphasize the selection of maximum MFI returns as showed by changes in the monthly NAV of MFP managed by investment managers. The MCS for much other company management has used MCS as a tool for deciding (Ng et al., 2007; Casari, 2008; León & Vaello-Sebastià, 2010; Chou, 2011; Nadarajah & Secomandi, 2017; Castañeda & Reus, 2019).

We conducted this research to achieve a maximum return decision at a certain point after going through the experimental frequency. Tüzüntürk et al. (2015) emphasized that the basic difference between this forecast and the others is that the

three types include time and nature, the presence or absence of random variables, and based on random variables. Referring to the first provision, there are two simulations (dynamic and static). Dynamic simulation is a model that is influenced by the time of observation. This simulation is good from static simulation, which applies to describe a certain process or system that is not visible by time and events at a certain time. MCS is very suitable for static simulation. The second provision refers to the presence or absence of random variables. MCS is more prominent for simulations based on probabilistic or stochastic basis, which can represent certain events that contain elements of uncertainty (Takagi et al., 2018). Then, MCS is irrelevant to circumstances that are certain to occur (normal). Third, based on random variables such as mixed, discrete, continuous, and empirical simulations, SCM highlights conditions that can simulated with empirical data as a basis (Balogh et al., 2013). Mixed simulation only predicts a process that has discrete system components. Discrete simulation focuses on discrete (systematic) parts and continuous simulation, which highlights any changes in the state of the variables. In a continuous simulation, it has the potential to add or subtract components as needed (inconsistent).

Another important review comes from Davies et al. (2014). Of the three criteria, only one stood out and met the criteria, namely MCS. This model can represent object, time series, and causal. It aimed the case at the premise, when the forecast related to changes in other variables over a certain period. Causality interprets a high correlation and concludes an event is not completely random.

Until now, multivariate regression such as MCS is often used to evaluate causality. Because of its multivariate form, the test is workable to apply with MCS such as the Chi test or partial test (Vasu, 1978; Roy & Hobert, 2019). Thus, our consideration is appropriate with the application of SCM referring to these three criteria. This is certainly under case studies in unexpected situations such as disasters (Covid-19) and supporting through mature empirical probability projections.

We summarize the structure of the paper into four parts. The background, phenomena, and supporting literature presented in the introduction (first session). For the second session, the data and method illustrate the study technique. In the third session, there are main findings and discussion. The conclusion refers to the empirical results in the fourth session.

Review of Literature 42

A mutual fund portfolio is a grouping of financial assets such as stocks, bonds, and cash equivalents, and their fund counterparts, including exchange-traded mutual funds and closed-end funds (Tjahjono et al., 2003). EMF is a mutual fund that invests at least 80 percent of its managed portfolio into equity securities, while 20 percent is invested in other mutual fund instruments (Yu & Huang, 2013). Equity stock securities provide higher yield potential as capital gains through the growth of stock prices. Stock securities also provide other results as dividends. Stock mutual funds (SMF) provide the highest level of return and risk compared to other types of mutual funds. Larger equity stocks have higher returns because of higher risk exposure (Driessen et al., 2012).

10

The purpose of investing in EMF is to be free from the hassle of investing in equity stocks such as managing stocks, choosing the right stocks, limited time to control stock performance from time to time, wanting to get dividends, investors wanting to get capital gains on such large stock price increases (Voynarenko et al., 2021). The returns from EMF investments will be more optimal if carried out in a long-term period.

Simulation is a major change in operations research topics. Simulation offers an alternative to finding solutions to complex problems that analytical models (Chou, 2011; Wee et al., 2020) cannot solve as most other researchers have done with different variations of objectivity. Simulation has an understanding as a method for carrying out experiments with models of proper systems. Simulating means duplicating the features, shapes, and characteristics of the proper system. The basic idea of simulation is to use multiple devices to imitate proper systems to study and interpret the properties, behavior, and operations characteristics (Melouk et al., 2014).

We can use simulations besides operational research methods, especially in financial operations used to solve stochastic problems (Chen & Raggi & Bordignon, 2006; Tompkins & D'Ecclesia, 2006; Ng, 2007; Casari, 2008; Castañeda & Reus, 2009; Vagnani, 2009; Chen & Huang, 2008; Rossi & Spazzini, 2010; Chou, 2011; Huang, 2012; Yu & Huang, 2013; Melouk et al., 2014; Acebes et al., 2015; Buchner, 2015; Nadarajah & Secomandi, 2017; Wee et al., 2020). Simulation can represent dynamic behavior (Tompkins & D'Ecclesia, 2006; Casari, 2008; Yu & Huang, 2013; Ghodrati & Zahiri, 2014; Neaime, 2015; Ferrer et al., 2016; Lai, 2018) from a system into a model, this simulation aims to evaluate a system model numerically (Yang, 2005; Sanford & Martin, 2005; Raggi & Bordignon, 2006; Casari, 2008; Chen & Huang, 2008; Rossi & Spazzini, 2010; Chen & Huang, 2012; Driessen et al., 2012; Kang et al., 2012; Yu & Huang, 2013; Ghodrati & Zahiri, 2014; Melouk et al., 2014; Denault & Simonato, 2017; Nadarajah & Secomandi, 2017; Lai, 2018; Li et al., 2020; Wi et al., 2020) and data is collected to estimate the true model characteristics and the simulation approach supports sensitive analysis by allowing rapid changes to the model logic and data. Simulation is designing a logical model (Lai, 2018) mathematics (Vagnani, 2009; Rossi & Spazzini, 2010; Chou, 2011; Melouk et al., 2014; Nadarajah & Secomandi, 2017) of an actual system and experimenting with models built on computers (Goda, 2017).

Another definition of simulation is a technique of imitating operations or processes that occur in a system with the help of computer devices (Neaime, 2015; Nadarajah & Secomandi, 2017) and based on certain assumptions so that the system can be studied scientifically. Different objectives and criteria may have different measurement scales. Solving this problem means designing or selecting the best answer among the options. Multi-criteria decision-making is a choice, which relates to the decision-making process in which there are differences and are inconsistent.

METHOD

In this case, it limited the study to the period of the Covid-19 in Indonesia. So we carried the review in this study out 12 months from the beginning of the pandemic

period (March 2020 to February 2021). With indications that at the beginning of the Covid-19 pandemic, the capital market experienced significant fluctuations (Haryanto, 2016; Wong et al., 2021; Nugroho & Stoffers, 2020). Since the pandemic, the Composite Stock Price Index could not return to its original position, which is around the level of 5,942 in March 2020. The sharpest decline occurred in April, where the index was at its lowest level throughout the year at 3,937 (Safitri, 2020). Therefore, this research is focused on the pandemic.

The population in this study is EMF that has publicly published in the Indonesia Financial Services Authority (OJK) and active during the research period March 2020 to February 2021, totaling 273 of EMF. Researchers chose this period because in the 2020 period Indonesia experienced an economic crisis triggered by the Covid-19 pandemic so that we can use this as a research reference (Azis et al., 2021; Rahmayani & Oktavilia, 2021).

The secondary data used in this study got by using the documentation method on data from collecting, recording, and reviewing documents on financial data during the research period (March 2020 to February 2021). It carried data collection out through: Pasardana.com website to get the NAV and a list of research samples.

Table 1. Sampling Criteria of EMF

Sampling Criteria	Number of Samples
Conventional SMF registered with OJK and actively operating during the research period	273
EMF with managed funds below IDR 500 billion	(215)
SMF that do not have complete data during the study period	(3)
EMF were selected as samples based on the Bareksa.com site	55

(Source: Author's)

All simulations require good planning and organization (Geni et al., 2018). The following steps must be taken by managers to carry out the simulation process are: (1) Determine the probability distribution for the important variables, (2) Calculate the cumulative distribution for each variable in step 1, (3) Determine intervals of random numbers for each variable, (4) Generate random numbers, and (5) State a series of simulations from several experiments.

RESULT AND DISCUSSION

The movement of the average NAV of 55 MFP for the observation period starting from January to December 2020 is relatively stable, there are only a few MFP that have very high NAV, so there is a very high gap between the NAV of MFP in Indonesia.

Changes in the monthly NAV movement of MFP impact the MFI return. Changes in the notable increase in NAV mean a notable change in the investment return of each investor. In Figure 1, the graph of the return movement of 55 MFP that

became the sample of this study was relatively stable during the Covid-19 that hit nationally and internationally.

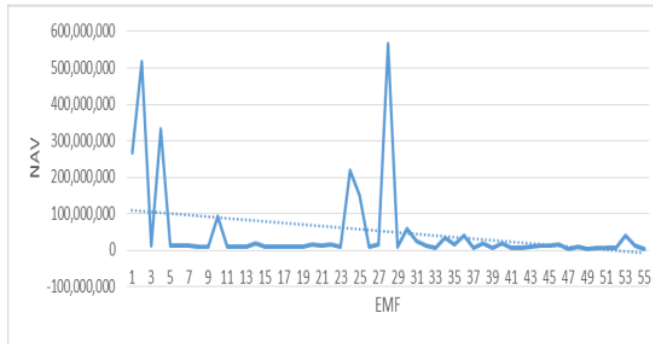


Figure 1. Average NAV of MFP for the Jan-Dec, 2020 (Source: output data)

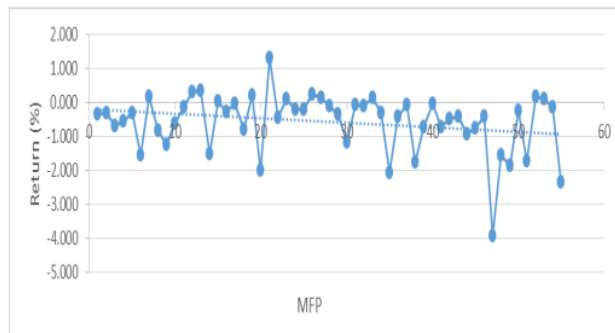


Figure 2. Return Movement of MFP for the Jan-Dec, 2020 (Source: output data)

A sign increasing in MFR comes from an increase in the NAV of equity funds. The EMF portfolio has a composition of 80 percent shares and 20 percent bonds or 20 percent money market products or it can be a mixture of the two, namely bonds and deposits, this optimal composition of mutual funds can maximize the increase in MFI returns that are managed by professional investment managers and reliable.

Figure 2, showed a linear line that decreases but is not as sharp as the decline in equity funds investment that occurred during the 2020 that hit globally, this happened because the composition of this stock mutual fund was at 20 percent bonds or 20 percent deposits. There are MFP that have the lowest point of -4.00 in EMF investment returns. This can happen because the effect of the composition of the stock mutual fund portfolio has a negative impact which has decreased significantly because of the impact of the global pandemic.

The stochastic volatility in the increase (decrease) in MFI returns relative to the case of constant volatility can be seen from the skewness line, where the IR skewness is equal to $-1,542/0,322 = -4,788 < 2$ (see Table 2). This means that the Investment

Return data widens with the level of the data tilt to the right, investment returns during the Covid-19 in 2020 are relatively small, this is showed by the small NAV volatility because of the decline in securities instruments in the mutual fund portfolio, on average, relatively decreasing.

Table 2. Descriptive Statistical of IR and NAV

Information	Statistic	Bootstrap					
		Bias	Std. Error	95% Confidence Interval			
				Lower	Upper		
N Valid	IR	55	0	0	55	55	
	NAV	55	0	0	55	55	
Missing	IR	0	0	0	0	0	
	NAV	0	0	0	0	0	
Mean	IR	-547.400	-2.508	114.944	-794.472	-346.496	
Mode	IR	-3944.00 ^a					
Std. Deviation	IR	843.873	-11.605	132.584	572.268	1,095.366	
Variance	IR	712,123.207	-1891.172	224,032.239	327,491.487	1,199,826.822	
Skewness	IR	-1.542	0.185	0.597	-2.480	-0.217	
Std. Error of Skewness	IR	0.322					
Kurtosis	IR	4.076	-0.969	2.451	-0.382	8.750	
Std. Error of Kurtosis	IR	0.634					
Minimum	IR	-3,944.00					
Maximum	IR	1,328.00					

a. Multiple modes exist. The smallest value is shown

b. Unless otherwise noted, bootstrap results are based on 1000 bootstrap samples

(Source: output data)

Intuitively, a negative correlation produces a very high variance of 712,123.207 when MFR fall, and this leads to the fat left tail of the probability density. They associate the right tail with low variance and do not spread outward. The fat left tail reduces MFR, while the fat left tail increased NAV. MFR benefit from the fact that we concentrate the mass distribution of NAV in the lower right of negative skewness, while small MFR suffer because the NAV of MFP is small. It can be seen that the movement of the average return of mutual funds is small or decreased by -547.40 during the 2020 in Indonesia, this standard deviation of 843.87 shows that the distribution of data in a sample, which looks at how close the data is to The mean or average of the sample is quite wide, this is because the minimum value of MFR of -3.944 is much smaller than the average and the maximum value of MFR of 1,328 is much greater than the average return of the mutual fund.

Table 3 displays the NAV simulation with an experimental frequency of 48 times by the researchers, the frequency of monthly NAV gains that decreased very high occurred only once in early January to February 2020, the frequency of decreasing monthly NAV gains which often occurred was 12 times with a NAV value of -0.23 occurred in May 2020. In August 2020 there were MFP that increased drastically very high with a frequency of 76 times. We got random number intervals after the cumulative probability distribution calculated. The random number interval will group several NAV based on the cumulative distribution of the probability of the MFI return.

Table 3. Investment Return Simulation with a Frequency of 48 Times

Time-Freq.	IR	Freq.	Return Probability Distribution	Cumulative Probability Distribution	Random Number Interval	Simulation Result IR	IR
1	-0.43	1	0.002	0.00	0.0 - 0.08	0	0
2	-0.28	1	0.002	0.00		0	0
3	-0.27	1	0.002	0.01		1	547.4
4	-0.25	1	0.002	0.01		0	0
5	-0.23	12	0.018	0.03		3	1642.2
6	-0.22	11	0.017	0.04		4	2189.6
7	-0.21	11	0.017	0.06		1	547.4
8	-0.20	5	0.008	0.07		2	1094.8
9	-0.19	2	0.003	0.07		0	0
10	-0.18	1	0.002	0.07		0	0
11	-0.17	5	0.008	0.08		2	1094.8
12	-0.13	2	0.003	0.08		0	0
13	-0.12	7	0.011	0.09	0.09 - 0.23	0	0
14	-0.11	1	0.002	0.09		0	0
15	-0.10	15	0.023	0.12		0	0
16	-0.09	21	0.032	0.15		2	1094.8
17	-0.08	3	0.005	0.15		0	0
18	-0.07	5	0.008	0.16		2	1094.8
19	-0.06	2	0.003	0.16		0	0
20	-0.05	1	0.002	0.16		0	0
21	-0.04	17	0.026	0.19		1	547.4
22	-0.03	14	0.021	0.21		1	547.4
23	-0.02	14	0.021	0.23		0	0
24	-0.01	9	0.014	0.25	0.24 - 0.91	2	1094.8
25	-0.01	1	0.002	0.25		0	0
26	0.00	14	0.021	0.27		0	0
27	0.01	41	0.062	0.33		0	0
28	0.02	52	0.079	0.41		2	1094.8
29	0.03	45	0.068	0.48		0	0
30	0.04	57	0.086	0.56		0	0
31	0.05	67	0.101	0.67		4	2189.6
32	0.06	76	0.115	0.78		1	547.4
33	0.07	48	0.073	0.85		0	0
34	0.08	21	0.032	0.88		1	547.4
35	0.09	11	0.017	0.90		0	0
36	0.10	7	0.011	0.91		4	2189.6
37	0.11	15	0.023	0.93	0.92 - 1.00	1	547.4
38	0.12	24	0.036	0.97		0	0
39	0.13	4	0.006	0.98		1	547.4
40	0.14	4	0.006	0.98		0	0
41	0.15	5	0.008	0.99		2	1094.8
42	0.16	1	0.002	0.99		0	0
43	0.17	1	0.002	0.99		0	0
44	0.18	1	0.002	1.00		0	0
45	0.18	1	0.002	1.00		0	0
46	0.26	1	0.002	1.00		0	0
47	0.33	1	0.002	1.00		0	0
48	0.84	1	0.002	1.00		0	0

(Source: output data)

This simulation random number interval set from 0.00 to the 12th experimental frequency, then we set the maximum random number interval according to the cumulative probability distribution of the IR simulation data, as shown in Table 2 that the random number interval divided into four groups. The first group 0.00-0.08, second group 0.09-0.23, third group 0.24-0.91, and fourth group 0.92-1.00.

From the simulation results, we find that the estimated average of MFR request is 37 divided by 48 trial frequencies; the result is 0.770, and the estimated average of MFR in Indonesia during the 2020 is got from the number of simulated IRs of 20,253.8 divided by 48 experimental frequencies is 421.95.

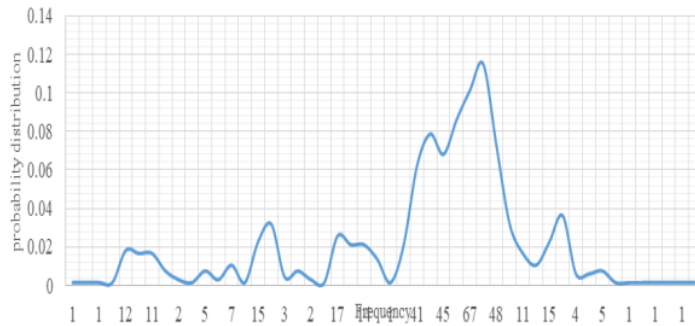


Figure 3. Probability Distribution of MFI Return in Jan-Dec, 2020 (Source: output data)

From Figure 3, in terms of the construction of MFI returns, assuming that parametric or empirical methods are used to calculate the NAV of MFP, such as the quote part of the cumulative probability distribution graph for MFI returns, which is best determined by the MCS, that the frequency of occurrence of values The MFI return is 76 times with a probability distribution of 11.5 percent, which is better than the frequency of occurrence of the MFI return value of 1 time with a probability distribution of 0.2 percent. There is a possibility of an increase of 0.2 percent to 11.5 percent because the NAV range of MFP among several mutual fund companies has a very large NAV.

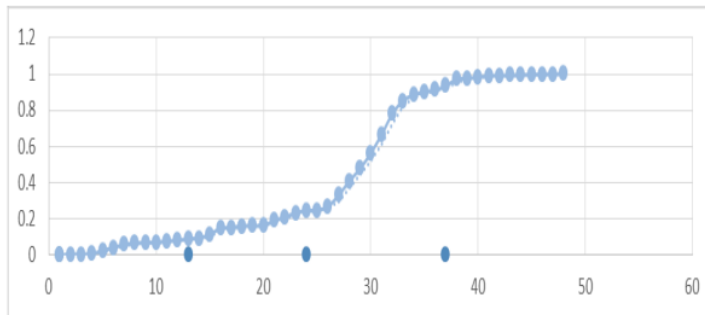


Figure 4. Random Number Interval and Cumulative Probability Distribution of MFI Return in Jan-Dec, 2020 (Source: output data)

It divided the random number interval into the first group (0.00-0.08), second group (0.09-0.23), third group (0.24-0.91), and fourth group (0.92-1.00). The movement of the cumulative probability distribution at the random number interval of 0.00-0.008 is relatively stable increasing, the movement of the cumulative probability distribution at the next random number interval is 0.0- 0.23 and the random number interval is 0.91-1.00 more increased but not as sharp as a drastic increase in the random number interval of 0.24-0.91. At random number intervals in groups 1, 2, and 4, the cumulative probability distribution movement is relatively stable increasing because in the cumulative distribution the probability of MFI returns is relatively small because of the decrease in NAV of MFP that occurred during the 2020 in Indonesia, but in group 3 with a random number interval of 0.24-0.91 has a sharp cumulative probability distribution movement that increases drastically, this is because of changes in MFI returns at a very high probability cumulative distribution number interval which is also caused by the NAV of certain MFP which are in great demand by the investor community (see Figure 4).

In Figure 5, the frequency of occurrence of the minimum number of MFI return values is between 0-30 times having a low probability cumulative distribution movement, it differs from the frequency of occurrence of the maximum number of MFI return values between 60-80 having a cumulative distribution movement high probability, the movement of the cumulative distribution of medium probability occurs at the frequency of occurrence of MFI return values between 30-60 times.

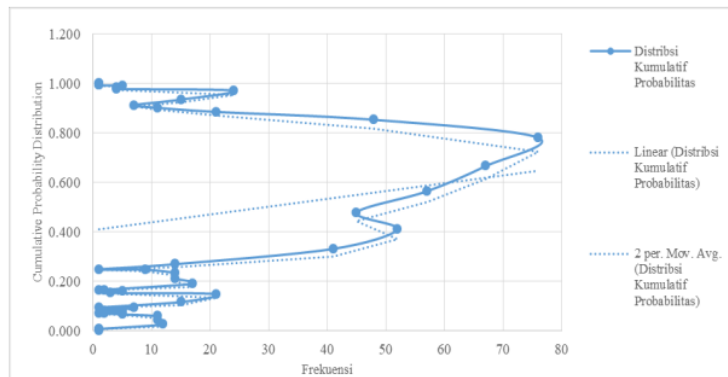


Figure 5. Cumulative Probability Distribution of MFI Return in Jan-Dec, 2020 (Source: output data)

The linearity of the moving average of the cumulative distribution of moving probability increases steadily at random number intervals, the estimated average of MFR request is 0.77 and the estimated average of MFR in Indonesia during the Covid-19 problem in 2020 is 421.95.

The basic concept of the simulation method is to generate a vector of correlated normal variables, turning them into uniform variables with the help of the cumulative probability distribution function (Yang, 2005; Ng, 2007; Rossi & Spazzini, 2010; Cho, 2011; Ferrer, 2016; Li et al., 2020; Wee et al., 2020), then input the variables into their respective marginal distributions by the inverse transformation method. From the model results, and offers valuable information about the possibility of implementing alternative MFI returns at or below the NAV of certain MFP. However, the MFI return model does not consider complex stochastic and dependency processes. In addition, this approach focuses on the present value in choosing the best alternative long-term scenario and is not appropriate for determining the actual investment return of mutual funds with uncertainty.

CONCLUSION AND RECOMMENDATION

We are trying to estimate the NAV movement and MFI returns for Indonesia because of the pandemic with an MCS. We observed 213 samples in the time span of March 2020–February 2021.

Predicting the ideal level of MFI return required by their investors for investment managers of mutual fund companies is an important thing to consider in managing the net asset level of the MFP they manage. This will have a long-term impact on maintaining the movement of the NAV of MFP to move relatively stable and increase, which increases the rate of return on MFI.

By using the MCS, MFI return simulation helps investment managers, or their investors determine the choice of an average MFR request of 77.08 percent with an estimated average MFR in Indonesia during the 2020 pandemic period of 421,954. After a choice made

using the MCS approach in the Covid-19 conditions, it provided a decision for mutual fund investors to maintain or act on buying or selling investment products offered by investment managers at a certain NAV level, and a consideration of decisions for investment managers to achieve the target required by their investors at a certain NAV level by controlling the management of the securities composition of a mutual fund portfolio product.

REFERENCES

- Acebes, F., Pereda, M., Poza, D., Pajares, J., & Galán, J. M. (2015). Stochastic Earned Value Analysis Using Monte Carlo Simulation and Statistical Learning Techniques. *International Journal of Project Management*, 33(7), 1597–1609.
- Amédée-Manesme, C., Barthélémy, F., Baroni, M., & Dupuy, E. (2013). Combining Monte Carlo Simulations and Options to Manage the Risk of Real Estate Portfolios. *Journal of Property*

- Investment & Finance, 31(4), 360-389.
- Azis, M., Burhanuddin, B., & Rahayu, H. (2021). Stock Price of Pandemic Covid-19 in Stock Market Performance. *Universal Journal of Accounting and Finance*, 9(2), 184-190
- Azis, M., Hadjaat, M., Rosi Syvati, R., & Darma, D. C. (2021). Evaluation of Systematic Risk, Corporate Governance, and Cash Holdings: Evidence from Indonesia. *Economics of Development*, 20(1), 35-45.
- Balogh, P., Golea, P., & Inceu, V. (2013). Profit Forecast Model Using Monte Carlo Simulation in Excel. *Romanian Statistical Review*, 61(12), 33-40.
- Biondi, B., Cornelsen, L., Mazzocchi, M., & Smith, R. (2020). Between Preferences and References: Asymmetric Price Elasticities and the Simulation of Fiscal Policies. *Journal of Economic Behavior & Organization*, 180, 108-128.
- Blasques, F., Lucas, A., & van Vlodrop, A. C. (2020). Finite Sample Optimality of Score-Driven Volatility Models: Some Monte Carlo Evidence. *Econometrics and Statistics*, 19, 47-57.
- Buchner, A. (2015). Equilibrium Option Pricing: a Monte Carlo Approach. *Finance Research Letters*, 15, 138-145.
- Casari, M. (2008). Markets in Equilibrium with Firms Out of Equilibrium: a Simulation Study. *Journal of Economic Behavior & Organization*, 65(2), 261-276.
- Castañeda, P., & Reus, L. (2019). Suboptimal Investment Behavior and Welfare Costs: a Simulation Based Approach. *Finance Research Letters*, 30, 170-180
- Chen, N., & Huang, Z. (2012). Brownian Meanders, Importance Sampling and Unbiased Simulation of Diffusion Extremes. *Operations Research Letters*, 40(6), 554-563.
- Chen, S-H., & Huang, Y-C. (2008). Risk Preference, Forecasting Accuracy and Survival Dynamics: Simulations based on a Multi-Asset Agent-Based Artificial Stock Market. *Journal of Economic Behavior & Organization*, 67(3-4), 70-71.
- Chou, J-S. (2011). Cost Simulation in an Item-Based Project Involving Construction Engineering and Management. *International Journal of Project Management*, 29(6), 706-717.
- Davies, R., Coole, T., & Osipyw, D. (2014). The Application of time Series Modelling and Monte Carlo Simulation: Forecasting Volatile Inventory Requirements. *Applied Mathematics*, 5(8), 1152-1168.
- Denault, M., & Simonato, J-G. (2017). Dynamic Portfolio Choices by Simulation-and-Regression: Revisiting the Issue of Value Function vs Portfolio Weight Recursions. *Computers & Operations Research*, 79, 174-189.
- Driessen, J., Lin, T., & Phalippou, L. (2012). A New Method to Estimate Risk and Return of Nontraded Assets from Cash Flows: the Case of Private Equity Funds. *Journal of Financial and Quantitative Analysis*, 47(3), 511-535.
- Ferrer, A., Casals, J., & Sotoca, S. (2016). Efficient Estimation of Unconditional Capital by Monte Carlo Simulation. *Finance Research Letters*, 16, 75-84.
- Fortmann-Roe, S. (2014). Insight Maker: A General-Purpose Tool for Web-Based Modeling & Simulation. *Simulation Modelling Practice and Theory*, 47, 28-45.
- Geni, B. Y., Santony, J., & Sumijan, S. (2019). Prediksi Pendapatan Terbesar pada Penjualan Produk Cat dengan menggunakan Metode Monte Carlo. *Jurnal Informatika Ekonomi Bisnis*, 1(4), 15-20
- Ghodrati, H., & Zahiri, Z. (2014). A Monte Carlo Simulation Technique to Determine the Optimal Portfolio. *Management Science Letters*, 4(3), 465-474.
- Gimpelevich, D. (2011). Simulation-based Excess Return Model for Real Estate Development: a Practical Monte Carlo Simulation-Based Method for Quantitative Risk Management and Project Valuation for Real Estate Development Projects Illustrated with a High-Rise Office Development Case Study. *Journal of Property Investment and Finance*, 29(2), 115-144.
- Goda, T. (2017). Computing the Variance of a Conditional Expectation via non-nested

- Monte Carlo. *Operations Research Letters*, 45(1), 63–67. 26
- Haryanto, S. (2016). Profitability Identification of National Banking Through Credit, Capital, Capital Structure, Efficiency, and Risk Level. *Jurnal Dinamika Manajemen*, 7(1), 11–21. 65
- Kang, W., Kim, K-K., & Shin, H. (2012). Denoising Monte Carlo Sensitivity Estimates. *Operations Research Letters*, 40(3), 615–202. 61
- Lai, S-K. (2018). A Simulation Model for Urban Development in China. *Journal of Urban Management*, 7(1), 1–5. 4
- Lee, C-H., Yang, C-B., & Chen, H-H. (2014). Taiwan Stock Investment with Gene Expression Programming. *Procedia Computer Science*, 35, 137–146. 47
- León, A., & Vaello-Sebastià, A. (2010). A Simulation-Based Algorithm for American Executive Stock Option Valuation. *Finance Research Letters*, 7(1), 14–23.
- Li, C., Wu, W., Huang, S., & Yang, L. (2020). A Monte Carlo Tree Search-Based Method for Online Decision Making of Generator Startup Sequence Considering Hot Start. *International Journal of Electrical Power & Energy Systems*, 121, 106070. 53
- Li, D., Clements, A., & Drovandi, C. (2020). Efficient Bayesian Estimation for GARCH-type Models via Sequential Monte Carlo. *Econometrics and Statistics*, 19, 22–46. 50
- Livingston, M., Yao, P., & Zhou, L. (2019). The Volatility of Mutual Fund Performance. *Journal of Economics and Business*, 104, 105835. 21
- Melouk, S. H., Fontem, B. A., Waymire, E., & Hall, S. (2014). Stochastic resource Allocation Using a Predictor-Based Heuristic for Optimization via Simulation. *Computers & Operations Research*, 46, 38–48. 32
- Mohanti, D., & Priyan, P. K. (2018). Style-Exposure Analysis of Large-Cap Equity Mutual Funds in India. *IIMB Management Review*, 30(3), 219–228. 44
- Nadarajah, S., & Secomandi, N. (2017). Relationship between Least Squares Monte Carlo and Approximate Linear Programming. *Operations Research Letters*, 45(4), 409–414. 54
- Neaime, S. (2015). Are Emerging MENA Stock Markets Mean Reverting? a Monte Carlo Simulation. *Finance Research Letters*, 13, 74–80. 9
- Ng, S. T., Xie, J., Cheung, Y. K. & Jefferies, J. M. (2007). A Simulation Model for Optimizing the Concession Period of Public-Private Partnerships Schemes. *International Journal of Project Management*, 25(8), 791–798. 63
- Nugroho, A. C., & Stoffers, J. (2020). Market Competition and Agency Problem: a Study in Indonesian Manufacturing Companies. *Jurnal Dinamika Manajemen*, 11(1), 65-77. 19
- Parsa, V. A., & Salehi, E. (2016). Spatio-Temporal Analysis and Simulation Pattern of Land Use/Cover Changes, Case Study: Naghadeh, Iran. *Journal of Urban Management*, 5(2), 43–51. 27
- Piranfar, H., & Masood, O. (2012). Measuring Risk and Financial Support for NPPs using Monte Carlo Simulation. *Journal of Risk Finance*, 13(2), 160-170. 56
- Raggi, D., & Bordignon, S. (2006). Comparing Stochastic Volatility Models through Monte Carlo Simulations. *Computational Statistics & Data Analysis*, 50(7), 1678–1699. 5
- Rahmayani, D., & Oktavilia, S. (2021). Does the Covid-19 Pandemic affect the Stock Market in Indonesia?. *Jurnal Ilmu Sosial dan Ilmu Politik*, 24(1), 33-47.
- Righi, I. B., & Borenstein, D. (2018). A Simulation Comparison of Risk Measures for Portfolio Optimization. *Finance Research Letters*, 24, 105–112. 28
- Rossi, E., & Spazzini, F. (2010). Model and Distribution Uncertainty in Multivariate GARCH Estimation: a Monte Carlo Analysis. *Computational Statistics & Data Analysis*, 54(11), 2786–2800. 2
- Roy, V., & Hobert, J. P. (2010). On Monte Carlo methods for Bayesian Multivariate Regression Models with Heavy-Tailed Errors. *Journal of Multivariate Analysis*, 101(5), 1190–1202. 33
- Sanford, A. D., & Martin, G. M. (2005). Simulation-based Bayesian Estimation of an Affine Term Structure Model.

- 60 *Computational Statistics & Data Analysis*, 49(2), 527–554.
- Safitri, K. (2020). 6 bulan pandemi Covid-19, Bagaimana Dampaknya ke pergerakan saham di Indonesia?. Retrieved from <https://money.kompas.com/read/2020/09/02/155619126/6-bulan-pandemi-covid-19-bagaimana-dampaknya-ke-pergerakan-saham-di-indonesia?page=all>
- 23 Takagi, K., Otaki, M., & Otaki, Y. (2018). Potential of Rainwater Utilization in Households Based on the Distributions of Catchment Area and End-Use Water Demand. *Water*, 10(12), 1706.
- 22 Tjahjono, E. D., Hutabarat, A. R., Haryono, E., Majardi, F., & Pramono, B. (2003). Pengukuran Inflasi Inti (core inflation) di Indonesia. *Buletin Ekonomi Moneter dan Perbankan*, 2(4), 1-34.
- 4 Tompkins, R. G., & D'Ecclesia, R. L. (2006). Unconditional Return Disturbances: a Non-Parametric Simulation Approach. *Journal of Banking & Finance*, 30(1), 287–314.
- 55 Tüzüntürk, S., Şenaras, A. E., & Sezen, K. (2015). Forecasting Water Demand by using Monte Carlo Simulation. *Akademik Bakış Dergisi*, 49, 25-44.
- 12 Vasu, E. S. (1978). Multiple Regression with Varying Levels of correlation Among Predictors: Monte Carlo Sampling from Normal and Non-Normal Populations. *Educational and Psychological Measurement*, 38(3), 633–645.
- Vagnani, G. (2009). The Black-Scholes Model as a Determinant of the Implied Volatility Smile: a Simulation Study. *Journal of Economic Behavior & Organization*, 72(1), 103–118.
- 59 Voynarenko, M., Hurochkina, V., Sushkova, O., & Yepifanova, I. (2021). Beneficial Ownership Chain and its Evaluation Arrangement. *Estudios de Economía Aplicada*, 38(4), 1-9.
- 39 Wee, D. C., Chen, F., & Dunsmuir, W. T. (2020). Likelihood Inference for Markov Switching GARCH(1,1) Models using Sequential Monte Carlo. *Econometrics and Statistics*, 1, 1–19.
- 17 Wong, Z. W. V., Chen, F., & Yiew, T. H. (2021). Effects of Rent-Seeking on Economic Growth in Low-Income Economies. *Buletin Ekonomi Moneter dan Perbankan*, 24(2), 205-220.
- 46 Yang, I. T. (2005). Simulation-based Estimation for Correlated Cost Elements. *International Journal of Project Management*, 52(4), 275–282.
- Yu, T-Y., & Huang, H-T. (2013). Coupling a Memetic Algorithm to Simulation Models for Promising Multi-Period Asset Allocations. *Computers & Operations Research*, 40(1), 2585–2597.

Artikel Darma

ORIGINALITY REPORT

29%
SIMILARITY INDEX

24%
INTERNET SOURCES

%
PUBLICATIONS

24%
STUDENT PAPERS

PRIMARY SOURCES

1	Submitted to Universitas Negeri Semarang Student Paper	2%
2	export.arxiv.org Internet Source	1%
3	journals.vgtu.lt Internet Source	1%
4	link.springer.com Internet Source	1%
5	www.businessperspectives.org Internet Source	1%
6	openaccess.city.ac.uk Internet Source	1%
7	hdl.handle.net Internet Source	1%
8	Submitted to Colorado State University, Global Campus Student Paper	1%
9	Submitted to Indian Institute of Technology, Madras	1%

10

Submitted to Universitas Negeri Jakarta

Student Paper

1 %

11

Submitted to Aspen University

Student Paper

<1 %

12

www.inderscienceonline.com

Internet Source

<1 %

13

www.na-businesspress.com

Internet Source

<1 %

14

www.scribd.com

Internet Source

<1 %

15

Submitted to Sriwijaya University

Student Paper

<1 %

16

Submitted to University of Bristol

Student Paper

<1 %

17

bmeb-bi.org

Internet Source

<1 %

18

tkuir.lib.tku.edu.tw:8080

Internet Source

<1 %

19

azarianjournals.ir

Internet Source

<1 %

20

dynresmanagement.com

Internet Source

<1 %

21

mafiadoc.com

Internet Source

<1 %

22

www.bmeb-bi.org

Internet Source

<1 %

23

www.mhlw.go.jp

Internet Source

<1 %

24

Submitted to Universitas Riau

Student Paper

<1 %

25

Submitted to University College London

Student Paper

<1 %

26

Submitted to Fakultas Ekonomi Universitas Indonesia

Student Paper

<1 %

27

Submitted to University of Oxford

Student Paper

<1 %

28

Submitted to University of Southampton

Student Paper

<1 %

29

explora.unex.es

Internet Source

<1 %

30

so06.tci-thaijo.org

Internet Source

<1 %

31

turcomat.org

Internet Source

<1 %

32

ir.uitm.edu.my

Internet Source

<1 %

33

coek.info

Internet Source

<1 %

34

dspace.uii.ac.id

Internet Source

<1 %

35

file.scirp.org

Internet Source

<1 %

36

nijest.com

Internet Source

<1 %

37

www.irit.fr

Internet Source

<1 %

38

Submitted to Koc University

Student Paper

<1 %

39

Submitted to Trinity College Dublin

Student Paper

<1 %

40

Submitted to Universitas 17 Agustus 1945
Surabaya

Student Paper

<1 %

41

Submitted to liberty

Student Paper

<1 %

42

www.anugrahsb.com

Internet Source

<1 %

43

Submitted to Laureate Education Inc.

Student Paper

<1 %

44

Submitted to University of Limerick

Student Paper

<1 %

45

www.club-ippo.com

Internet Source

<1 %

46

www.itcon.org

Internet Source

<1 %

47

dee.uib.es

Internet Source

<1 %

48

ficpubs.uai.cl

Internet Source

<1 %

49

jntnu.ord.ntnu.edu.tw

Internet Source

<1 %

50

koreascience.or.kr

Internet Source

<1 %

51

m.growingscience.com

Internet Source

<1 %

52

www.mitpressjournals.org

Internet Source

<1 %

53

www.rte.espol.edu.ec

Internet Source

<1 %

54

www.tandfonline.com

Internet Source

<1 %

55	Submitted to University of Melbourne Student Paper	<1 %
56	www.mas.ncl.ac.uk Internet Source	<1 %
57	people.maths.ox.ac.uk Internet Source	<1 %
58	Submitted to De La Salle University - Manila Student Paper	<1 %
59	www.wseas.org Internet Source	<1 %
60	Submitted to Asia Pacific University College of Technology and Innovation (UCTI) Student Paper	<1 %
61	Submitted to De Montfort University Student Paper	<1 %
62	Submitted to Sheffield Hallam University Student Paper	<1 %
63	journal.unnes.ac.id Internet Source	<1 %
64	Submitted to Imperial College of Science, Technology and Medicine Student Paper	<1 %
65	Submitted to Queen's University of Belfast Student Paper	<1 %

66

jurnal.unw.ac.id

Internet Source

<1 %

67

baadalsg.inflibnet.ac.in

Internet Source

<1 %

68

sulutdaily.com

Internet Source

<1 %

Exclude quotes Off

Exclude matches Off

Exclude bibliography Off

Artikel Darma

GRADEMARK REPORT

FINAL GRADE

/0

GENERAL COMMENTS

Instructor

PAGE 1

PAGE 2

PAGE 3

PAGE 4

PAGE 5

PAGE 6

PAGE 7

PAGE 8

PAGE 9

PAGE 10

PAGE 11

PAGE 12

PAGE 13

PAGE 14
