

# The Mixed Cropping

*by* Karyati Karyati

---

**Submission date:** 14-Oct-2019 07:33AM (UTC+0700)

**Submission ID:** 1192045188

**File name:** Karyati\_et\_al\_The\_mixed\_cropping.pdf (544.03K)

**Word count:** 6418

**Character count:** 30048

## The mixed cropping of *Anthocephalus cadamba* and *Glycine max* for rehabilitating sloping lands

KARYATI<sup>1\*</sup>, SRI SARMINAH<sup>1</sup>, KARMINI<sup>2\*\*</sup>, GUNAWAN SIMANGUNSONG<sup>1</sup>, JEKSON TAMBA<sup>1</sup>

<sup>1</sup>Faculty of Forestry, Universitas Mulawarman, Jl. Ki Hajar Dewantara, Gunung Kelua, Samarinda 75123, East Kalimantan, Indonesia  
Tel.: +62-541-35089, Fax.: +62-541-732146, \*email: karyati@fahutan.unmul.ac.id

<sup>2</sup>Faculty of Agriculture, Universitas Mulawarman, Jl. Pasir Balengkong, Gunung Kelua, Samarinda 75123, East Kalimantan, Indonesia  
Tel.: +62-541-749161, Fax.: +62-541-738341, \*\*email: karmini@faperta.unmul.ac.id

Manuscript received: 30 August 2018. Revision accepted: 25 October 2018.

**Abstract.** Karyati, Sarminah S, Karmini, Simangunsong G, Tamba J. 2018. The mixed cropping of *Anthocephalus cadamba* and *Glycine max* for rehabilitating sloping lands. *Biodiversitas* 19: 2088-2095. Agroforestry system is one of the many alternatives to overcome problems concerning sloping lands. The objectives of this current study were to analyze the effect of agroforestry system in the form of mixed cropping of jaboron tree (*Anthocephalus cadamba* Mig) and soybean (*Glycine max* Merr) on growth and hydro-ecological aspects on sloping lands with different steepness (a slightly steep and a steep slope gradient). The growth parameters (survival rate, ground coverage, diameter increment, and height increment) and hydro-ecological parameters (surface runoff, potential erosion, erosion hazard index, and erosion hazard level) were observed in this study. The findings showed that on the slightly steep slope (>15-25%) land, the survival rate of *A. cadamba* was 90%, the ground coverage of the *G. max* was 70-79%, the diameter and the height increments of *A. cadamba* trees were 1.8 cm year<sup>-1</sup> and 13.8 cm year<sup>-1</sup> respectively. Meanwhile, the potential erosion rate and the erosion hazard index were 32.13 ton ha<sup>-1</sup> year<sup>-1</sup> and 1.29, respectively. In the steeper slope (>25-45%), the survival rate of *A. cadamba* reached 90%, the *G. max* ground cover reached 60-69%, the diameter and height increments of the *A. cadamba* reached 1.5 cm year<sup>-1</sup> and 12.0 cm year<sup>-1</sup> respectively. Furthermore, in the steep slope, the potential erosion rate was 52.51 ton ha<sup>-1</sup> year<sup>-1</sup> and the erosion hazard index was 2.10. In addition, the potential erosion rate and the erosion hazard index in the control plot were higher than those in slightly steep slope. Therefore, it could be implied that the application of *A. cadamba* and *G. max* mixed cropping system could rehabilitate sloping lands.

**Keywords:** Erosion, growth, rehabilitation, slope, soil conservation

### INTRODUCTION

The total area of degraded lands in Indonesia is approximately 78 million ha, which consists of the slightly degraded area of 48 million ha, degraded area of 23 million ha, and highly degraded area of 7 million ha (ADB 2016). These degraded areas have existed due to biophysical, social, economic, and cultural factors (Matatula 2009). Therefore, the implementation of conservation agricultural system can be considered as an alternative to suppress land degradation (Daswir 2010). The agriculture practices have been proven capable of overcoming land degradation because these activities can reduce the loss of productive soil and suppress the erosion as well as increase the farming productivity and the farmer's income (Syam 2003). The combination of agricultural crops and forest trees in agroforestry system can optimize the use of land for agricultural production (Alao & Shuaibu 2013).

The cultivation technique in the marginal and sloping lands should focus on the integrated environmental factors (Budiastuti 2013). For instance, a plant species that has a suitable tolerance can grow well in a degraded land including some types of marginal land (Juhaeti et al. 2005). Furthermore, the soil conservation using a combination of upland rice with soybean sequence and *Mucuna bracteata* strip is found effective to reduce the runoff and to prevent the soil erosion and nutrient loss (Fuady et al. 2014). The

choice of the right plant species is needed for the land rehabilitation and the water and soil conservation program (Sarminah 2014). Plants such as the legumes may serve as an alternative intercropping plant among annual crops that could be the pioneer crops planted in degraded land rehabilitation (Idjudin 2011). The various plant species of leguminous vegetables, annual crops, and forest crops can grow well in degraded lands as alternative plants in the agroforestry system. These plant species can adapt to climate elements with 600-2500 mm year<sup>-1</sup> rainfall, 18-35°C temperature, and 50-85% relative humidity (Karyati 2008).

The rehabilitation and soil conservation using agroforestry system in the form of *sengon* (*Falcataria moluccana*) and peanut (*Arachis hypogaea*) mixed cropping are effective in suppressing erosion rate to a low erosion hazard (Sarminah et al. 2018). The production of soybean (*Glycine max* Merr), which is a shade tolerant in the agroforestry system of *G. max* and *Paraserianthes falcataria* (4 years of age), has been found to be lower than *G. max* without shading (Hartoyo et al. 2014). The use of *G. max* as an intercropping plant in the agroforestry system of *jaboron* (*Anthocephalus cadamba* Mig) and *G. max*, in the first year in the first cropping season would require a total cost of IDR 11,019,000.00 ha<sup>-1</sup> cropping season (cp)<sup>-1</sup>, and result in the total revenue of IDR 3,500,000.00 ha<sup>-1</sup> cp<sup>-1</sup> as well as the profit of IDR 7,519,000.00 ha<sup>-1</sup> cp<sup>-1</sup>, respectively (Karmini et al. 2017).

The agroforestry system as an alternative program may be implemented to rehabilitate sloping lands. In addition to providing economic benefit, the agricultural plant is expected to be able to cover the ground in the early years. Moreover, the forestry plant would be planted for soil and water conservation in long term program. Therefore, the objectives of this study were to implement the agroforestry system in the form of *A. cadamba* and *G. max* mixed cropping on sloping lands with different steepness (a slightly steep and a steep slope gradient) and to analyze the effect of that particular system on growth and hydro-ecological aspects of the land.

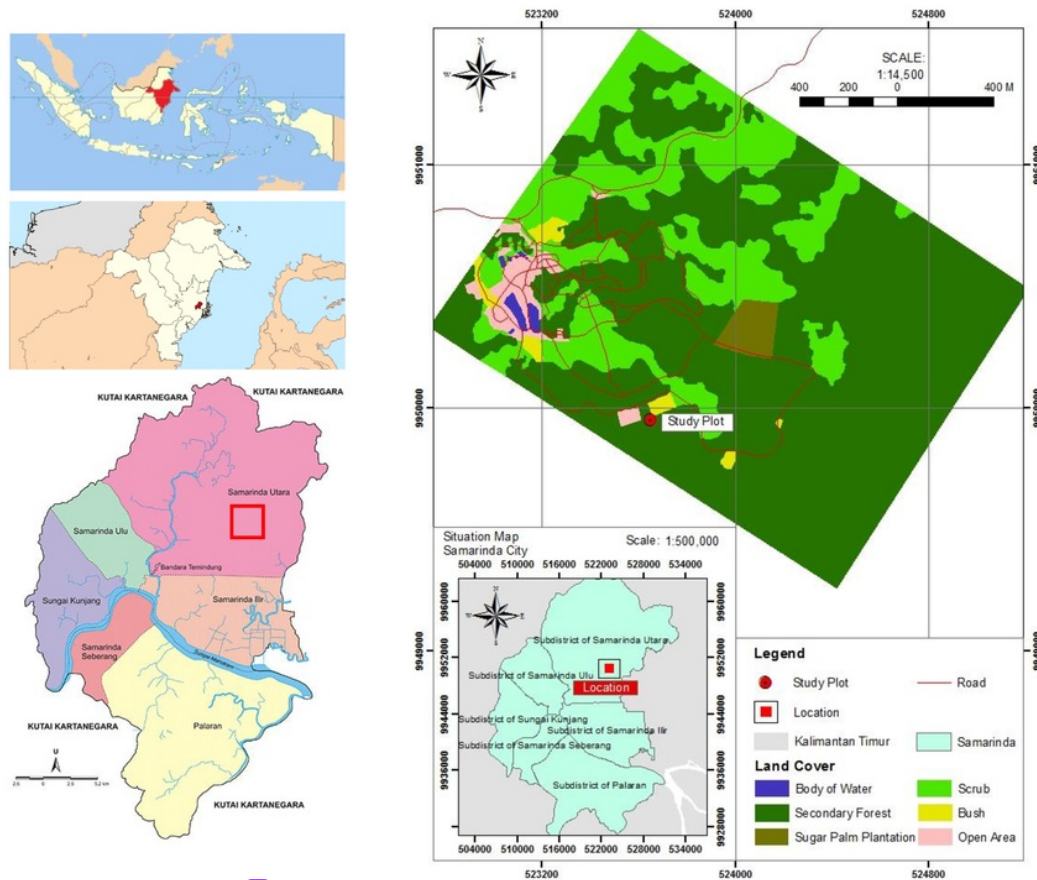
**5 MATERIALS AND METHODS**

**Study area**

This study was carried out from March to October 2017 at a sloping land located in the Educational Forest of Mulawarman University Faculty of Forestry. The Educational Forest covers an area of 300 ha and is administratively situated in Tanah Merah Village, North

Samarinda District, Samarinda Municipality, East Kalimantan Province (KRUS 2013; KRL 2014). The geographic locations of this site is 0°25'10"-0°25'24" South Latitude and 117°14'00"-117°14'14" East Longitude. The study plot was located between the Samarinda Bontang Highways between Kilometers 10 and 13. The map of the study area is shown in Figure 1.

During the last seven years, this study area has been observed to have an average of 211.5 mm monthly rainfall, 27.4°C of monthly temperature, 82.2% of monthly relative humidity, and 41.8 hours of average irradiation (Karyati 2015). The daily temperature and relative humidity inside the forest range from 23.7°C-30.9°C and 81.4%-99.3% respectively. While, outside the forest, the daily temperature is 25.9°C-28.8°C and the relative humidity is 76.0%-90.0%. The daily average light intensity ranges from 1.08 μmol to 18.41 μmol (Karyati & Ardianto 2016). Furthermore, the climate of Samarinda Municipality is categorized as type A climate based on Schmidt-Ferguson classification system (1951), with a quotient (Q) of 0.048, which is considered as a very humid area with a tropical rainforest vegetation (Karyati et al. 2016).



**3** Figure 1. Location of study site in Education Forest of Forestry Faculty of Mulawarman University at East Kalimantan, Indonesia

The Mulawarman University Educational Forest is located about 50 m above sea level in a lowland tropical rainforest. The original vegetation was natural forest dominated by Dipterocarpaceae. After the forest fire incidents in 1983, 1993, and 1998, the forest land turned into early secondary forest. Nowadays, the forest is in the late secondary forest stage and is on its way towards the climax state. The plant species of *ulin* (*Eusideroxylon zwageri*), *puspa* (*Schima wallichii*), *medang* (*Litsea* spp.), and *meranti* (*Shorea* spp.) are predominantly found in the forest. In addition, animals of invertebrates (protozoa, annelids, mollusks, crustaceans, insects, and arachnoids) and vertebrates (fishes, frogs, birds, reptiles, and mammals) are also found in this area (KRUS 2013; KRUS 2014).

**Procedures**

Two experimental plots of 10 m × 10 m were established in two different slope classes in the Educational Forest area, namely a slightly steep slope (>15-25%) and a steep slope (>25-45%). *A. cadamba* and *G. max* were grown on both plots. *A. cadamba* trees was six months old. *A. cadamba* trees were planted with a spacing of 3 m × 3 m whereas *G. max* was planted between *A. cadamba* trees as the groundcover legumes. The plant growth parameters (healthy plant, survival rate, and ground coverage) were measured at the end of assessment. The criteria of these parameters were formulated based on Regulation of Ministry of Forestry Republic of Indonesia Number: P.60/Menhut-II/2009. The diameter and height of *A. cadamba* were measured every month for 4 months.

Three erosion measurement plots of 10 m × 3 m were established on the two experimental plots and the control plot. The control plot was established on a moderate slope (>8-15%) without plantation. Furthermore, the hydro-ological parameters measurements were conducted for 35 times of rain events and the hydro-ological data were collected from May to September 2017 in the two different slopes as well as the control plot. Plant maintenance, such as watering, weeding, fertilization, and pest and plant diseases control, was performed regularly. The harvesting was only done for *G. max* whereas there was no harvesting done for the *A. cadamba* trees.

**Data analyses**

*Soil properties*

To obtain the soil profile description, a soil pit with the depth of 1.5 m was dug at the center of the study plot. Soil profile descriptions were done by adopting the standard procedures from the International Soil Science Society/ ISSS (NRCSS 2002). Using these procedures, the

characteristics of the soils from the topsoil through the bottom of profile were observed. Some of the characteristics, such as depth and field texture, were described. The analyses of soil physicochemical properties (pH (H<sub>2</sub>O), pH (KCl), C organic, total N, P, K, and soil texture) were done at the Laboratory of Soil Science, Trop 11 Forest Research Center, Mulawarman University. The soil pH was determined in distilled water and 1 N KCl in a soil with a solution ratio of 1:2.5 using the glass electrode method. The total nitrogen (total N) was analyzed using Kjeldahl method whereas Soil P and K were analyzed using the Bray 1 method.

*Erosion hazard index*

The observation and measurement of growth parameters were done at the end of every month for four months. The observation was conducted for both *A. cadamba* and *G. max*. *A. cadamba*'s survival rate, *G. max*'s ground coverage, and the diameter and height of *A. cadamba* tree were observed as well. In addition, hydro-ological parameters of surface runoff, potential soil erosion rate, erosion hazard index, and erosion hazard level were also measured in this study (Hammer 1981). The classification of erosion hazard index and erosion hazard level can be seen from Tables 1 and 2, while the erosion hazard index was determined using the following equation (Hammer 1981):

$$\text{Erosion hazard index} = \frac{\text{Potential erosion rate (ton ha}^{-1}\text{ year}^{-1})}{\text{Tolerable erosion rate (ton ha}^{-1}\text{ year}^{-1})}$$

**RESULTS AND DISCUSSION**

**Growth aspects**

In general, *A. cadamba* and *G. max* grew well in different slope, as indicated by the parameters of plant performance. For instance, it was observed that during the first three weeks, the *G. max* almost grew evenly in the two experimental plots. The plant growth parameters of *A. cadamba* and *G. max* are summarized in Table 3.

**Table 1.** Erosion hazard index categories (Hammer 1981)

| Erosion hazard index | Category  |
|----------------------|-----------|
| < 1,00               | Low       |
| 1,01-4,00            | Moderate  |
| 4,01-10,00           | High      |
| > 10,01              | Very high |

**Table 2.** Erosion hazard level classification

| Soil column (cm)     | Erosion rate (ton ha <sup>-1</sup> year <sup>-1</sup> ) |           |           |           |           |
|----------------------|---|-----------|-----------|-----------|-----------|
|                      | 23-15   | 15-<60    | 60-<180   | 180-480   | >480      |
| Deep (>90)           | Very low  | Low       | Moderate  | High      | Very high |
| Intermediate (60-90) | Low   | Moderate  | High      | Very high | Very high |
| Shallow (30-<60)     | Moderate  | High      | Very high | Very high | Very high |
| Very shallow (<30)   | High  | Very high | Very high | Very high | Very high |

Source: Regulation of Directorate General of Watershed Management and Social Forestry, Ministry of Forestry Republic of Indonesia (2013)

**Table 3.** The plant growth parameters of *A. cadamba* and *G. max* agroforestry system on the two different slope conditions.

| Plant species     | Slightly steep slope (>15-25%) |                   |                     |                              | Steep slope (>25-45%) |                   |                     |                              |
|-------------------|--------------------------------|-------------------|---------------------|------------------------------|-----------------------|-------------------|---------------------|------------------------------|
|                   | Healthy plant (%)              | Survival rate (%) | Ground coverage (%) | Yield (kg ha <sup>-1</sup> ) | Healthy plant (%)     | Survival rate (%) | Ground coverage (%) | Yield (kg ha <sup>-1</sup> ) |
| <i>A. cadamba</i> | 90<br>(Very good)              | 90<br>(Very good) | -                   | -                            | 90<br>(Very good)     | 90<br>(Very good) | -                   | -                            |
| <i>G. max</i>     | 80-89<br>(Good)                | -                 | 70-79<br>(Moderate) | 525                          | 70-79<br>(Moderate)   | -                 | 60-69<br>(Low)      | 485                          |

**Table 4.** The soybean yield (ton ha<sup>-1</sup>) of monoculture and agroforestry systems

| Plantation system   | <i>Glycine max</i> yield                             | Location   | Researcher (year)              |
|---|--|--|--------------------------------|
| A 50-cm row width in full season soybean cropping               | 4,142.5 kg ha <sup>-1</sup>                          | Research Farm of Mustafa Kemal University, Hatay, Turkey   | Caliskan et al. (2007)         |
| A 30-cm row width in double-cropped soybean                     | 3,241.5 kg ha <sup>-1</sup>                          | Saboba and Chereponi Districts, Northern Region of Ghana   | Dogbe et al. (2013)            |
| Monoculture system of <i>G. max</i>                             | 509-642 kg ha <sup>-1</sup>                          | Benin  | Zoundji et al. (2015)          |
| Monoculture system of <i>G. max</i>                             | 1,000 kg ha <sup>-1</sup>                            | Benin  | Zoundji et al. (2015)          |
| Agroforestry system of <i>Melia azedarach</i> and <i>G. max</i> |  | Experimental Garden Cikabayan, Kampus IPB, Dramaga, Bogor  | Jauhari et al. (2016)          |
| Variety of Argomulyo  | 720 kg ha <sup>-1</sup>                              |  |                                |
| Variety of Anjasmoro  | 1,150 kg ha <sup>-1</sup>                            |  |                                |
| Variety of Grobogan   | 640 kg ha <sup>-1</sup>                              |  |                                |
| Variety of Wilis  | 560 kg ha <sup>-1</sup>                              |  |                                |
| Non-agroforestry  |  |  |                                |
| Variety of Argomulyo  | 620 kg ha <sup>-1</sup>                              |  |                                |
| Variety of Anjasmoro  | 900 kg ha <sup>-1</sup>                              |  |                                |
| Variety of Grobogan   | 420 kg ha <sup>-1</sup>                              |  |                                |
| Variety of Wilis  | 350 kg ha <sup>-1</sup>                              |  |                                |
| Agroforestry system of <i>A. cadamba</i> and <i>G. max</i>      | 500 kg ha <sup>-1</sup>                              | Samarinda, East Kalimantan, Indonesia  | Karmini et al. (2017)          |
| The average productivity of <i>G. max</i> in 2015               | 1604 kg ha <sup>-1</sup><br>1568 kg ha <sup>-1</sup> | East Kalimantan Province<br>Indonesia  | Statistics of Indonesia (2017) |
| Agroforestry system of <i>A. cadamba</i> and <i>G. max</i>      |  | Educational Forest of Forestry Faculty, Mulawarman University, Samarinda, East Kalimantan, Indonesia | This study                     |
| Slightly steep slope (>15-25%)                                  | 525 kg ha <sup>-1</sup>                              |  |                                |
| Steep slope (>25-45%)   | 485 kg ha <sup>-1</sup>                              |  |                                |

Based on the observation, it was found that the number of healthy plants and the survival rate of *A. cadamba* on both plots could be classified into a “very good” (90%) category. In particular, the number of healthy plants and the ground coverage of *G. max* in the slightly steep slope was higher than those in steep slopes. Furthermore, the measurement for the yield also showed a similar trend of findings.

The average of *G. max* yield in the study site was similar to the findings of the previous studies in monoculture system (Dogbe et al. 2013) and agroforestry system (Jauhari et al. 2016; Karmini et al. 2017). This result was lower than those reported by Caliskan et al. (2007), Zoundji et al. (2015), as well as the average national yield (Statistics of Indonesia, 2017). Moreover, Jauhari et al. (2016) also reported that the yield of four *G. max* varieties planted in agroforestry system with *mindii* (*Melia azedarach* Linn) was higher than that in the non-agroforestry system. The *G. max* yields of monoculture and agroforestry system are presented in Table 4.

Tables 5 and 6 illustrate the monthly diameter and height increments of *A. cadamba* trees that were monitored for four months. *A. cadamba* trees on the slightly steep slope showed faster growth in terms of diameter and height increment than those on the steeper slope. The average stem diameter increments of *A. cadamba* were 1.8 cm year<sup>-1</sup> and 1.5 cm year<sup>-1</sup> on the less steep and steep slopes respectively. Meanwhile, the average height increments of *A. cadamba* trees on the slightly steep and the steep slopes were 13.8 cm year<sup>-1</sup> and 12.0 cm year<sup>-1</sup> respectively.

The average diameter increment of *A. cadamba* in *A. cadamba* and *G. max* agroforestry system was higher than reported by Krisnawati et al. (2011). Krisnawati et al. (2011) reported the diameter and height of *A. cadamba* in Java were 1.2-11.6 cm year<sup>-1</sup> and 0.8-7.9 m year<sup>-1</sup>, while the growth of those in South Kalimantan was 1.2-4.8 cm year<sup>-1</sup> and 0.8-3.7 m year<sup>-1</sup> respectively. Similarly, the diameter increment of *A. cadamba* in this study was higher than the predominant trees in a secondary tropical forest, i.e., 0.75-0.86 cm year<sup>-1</sup> (Karyati et al. 2017). The observation

**Table 5.** *Anthocephalus cadamba* stem diameter increments (mm) on the two different slopes

| Tree no. | Slightly steep slope (>15-25%) |                |                |                |                | Steep slope (>25-45%) |                |                |                |                |
|----------|--------------------------------|----------------|----------------|----------------|----------------|-----------------------|----------------|----------------|----------------|----------------|
|          | D <sub>0</sub>                 | d <sub>1</sub> | d <sub>2</sub> | d <sub>3</sub> | d <sub>4</sub> | D <sub>0</sub>        | d <sub>1</sub> | d <sub>2</sub> | d <sub>3</sub> | d <sub>4</sub> |
| 1        | 1.02                           | 2.26           | 3.38           | 4.58           | 6.10           | 1.02                  | 2.26           | 3.15           | 4.10           | 4.80           |
| 2        | 1.02                           | 2.50           | 3.41           | 4.30           | 5.50           | 1.02                  | 2.50           | 3.34           | 4.10           | 4.90           |
| 3        | 1.02                           | 2.68           | 3.52           | 4.70           | 6.20           | 1.03                  | 2.28           | 3.12           | 3.90           | 4.50           |
| 4        | 1.08                           | 2.04           | 3.18           | 4.51           | 5.85           | 1.08                  | 2.04           | 3.00           | 4.03           | 4.70           |
| 5        | 1.09                           | 2.25           | 3.47           | 4.57           | 5.90           | 1.06                  | 2.25           | 3.36           | 4.15           | 5.00           |
| 6        | 1.09                           | 2.18           | 3.14           | 4.40           | 5.60           | 1.09                  | 2.18           | 3.05           | 4.10           | 4.80           |
| 7        | 1.00                           | 2.08           | 3.16           | 4.54           | 5.76           | 1.00                  | 2.08           | 3.00           | 3.90           | 4.60           |
| 8        | 1.01                           | 2.49           | 3.43           | 4.61           | 6.30           | 1.01                  | 2.49           | 3.03           | 4.15           | 5.05           |
| 9        | 1.11                           | 2.01           | 3.26           | 4.50           | 5.76           | 1.09                  | 2.01           | 3.15           | 4.20           | 5.15           |
| 10       | 1.02                           | 2.19           | 3.16           | 4.30           | 5.65           | 1.02                  | 2.19           | 3.16           | 4.20           | 5.10           |
| 11       | 1.06                           | 2.32           | 3.38           | 4.44           | 5.75           | 1.06                  | 2.32           | 3.25           | 4.24           | 5.10           |
| 12       | 1.09                           | 2.24           | 3.42           | 4.71           | 6.40           | 1.09                  | 2.24           | 3.20           | 4.10           | 5.00           |
| 13       | 1.09                           | 2.38           | 3.39           | 4.56           | 5.84           | 1.10                  | 2.18           | 3.00           | 4.00           | 4.70           |
| 14       | 1.03                           | 2.29           | 3.20           | 4.37           | 5.60           | 1.02                  | 2.29           | 3.10           | 4.15           | 4.80           |
| 15       | 1.02                           | 2.21           | 3.30           | 4.47           | 5.74           | 1.02                  | 2.21           | 3.10           | 4.00           | 4.60           |
| 16       | 1.02                           | 2.17           | 3.27           | 4.28           | 5.58           | 1.04                  | 2.17           | 3.00           | 4.00           | 4.70           |
| Mean     | 1.05                           | 2.27           | 3.32           | 4.49           | 5.85           | 1.05                  | 2.23           | 3.13           | 4.08           | 4.84           |
| SD       | 0.40                           | 0.18           | 0.12           | 0.13           | 0.27           | 0.08                  | 0.14           | 0.12           | 0.10           | 0.20           |

Annual diameter increment = 17.5 mm year<sup>-1</sup> = 1.8 cm year<sup>-1</sup> (Slightly steep slope)  
 Annual diameter increment = 14.5 mm year<sup>-1</sup> = 1.5 cm year<sup>-1</sup> (Steep slope)

Note: D<sub>0</sub> = initial stem diameter (diameter measurement at the beginning of experiment); d<sub>1</sub>, d<sub>2</sub>, d<sub>3</sub>, d<sub>4</sub> = diameter increments at the end of the first, second, third, and fourth month after planting; SD=Standard Deviation

**Table 6.** *Anthocephalus cadamba* height increments (cm) on the two different slopes

| Tree no. | Slightly steep slope (>15-25%) |                |                |                |                | Steep slope (>25-45%) |                |                |                |                |
|----------|--------------------------------|----------------|----------------|----------------|----------------|-----------------------|----------------|----------------|----------------|----------------|
|          | H <sub>0</sub>                 | h <sub>1</sub> | h <sub>2</sub> | h <sub>3</sub> | h <sub>4</sub> | H <sub>0</sub>        | h <sub>1</sub> | h <sub>2</sub> | h <sub>3</sub> | h <sub>4</sub> |
| 1        | 52                             | 20             | 28             | 36             | 44             | 50                    | 17             | 26             | 30             | 37             |
| 2        | 52                             | 21             | 28             | 35             | 43             | 51                    | 19             | 26             | 31             | 39             |
| 3        | 50                             | 17             | 23             | 31             | 40             | 50                    | 18             | 25             | 31             | 38             |
| 4        | 55                             | 23             | 32             | 40             | 48             | 54                    | 22             | 29             | 35             | 43             |
| 5        | 54                             | 22             | 30             | 38             | 46             | 53                    | 20             | 27             | 33             | 42             |
| 6        | 54                             | 21             | 30             | 39             | 45             | 52                    | 19             | 25             | 32             | 40             |
| 7        | 55                             | 22             | 31             | 39             | 45             | 54                    | 22             | 28             | 34             | 42             |
| 8        | 55                             | 21             | 31             | 40             | 46             | 53                    | 21             | 28             | 35             | 41             |
| 9        | 56                             | 23             | 33             | 41             | 49             | 55                    | 23             | 30             | 35             | 42             |
| 10       | 53                             | 21             | 32             | 40             | 47             | 52                    | 21             | 29             | 34             | 40             |
| 11       | 52                             | 20             | 28             | 35             | 43             | 52                    | 20             | 26             | 32             | 39             |
| 12       | 53                             | 20             | 29             | 36             | 45             | 54                    | 22             | 28             | 34             | 41             |
| 13       | 54                             | 22             | 31             | 38             | 47             | 51                    | 20             | 27             | 32             | 39             |
| 14       | 52                             | 20             | 27             | 35             | 44             | 54                    | 23             | 29             | 35             | 41             |
| 15       | 56                             | 24             | 33             | 41             | 50             | 53                    | 21             | 28             | 33             | 40             |
| 16       | 56                             | 24             | 32             | 42             | 50             | 52                    | 18             | 24             | 30             | 37             |
| Mean     | 54                             | 21             | 30             | 38             | 46             | 53                    | 20             | 27             | 33             | 40             |
| SD       | 1.78                           | 1.78           | 2.63           | 2.96           | 2.72           | 1.51                  | 1.82           | 1.72           | 1.78           | 1.81           |

Annual height increment = 138.0 mm year<sup>-1</sup> = 13.8 cm year<sup>-1</sup> (Slightly steep slope)  
 Annual height increment = 120.0 mm year<sup>-1</sup> = 12.0 cm year<sup>-1</sup> (Steep slope)

Note: H<sub>0</sub> = initial tree height (height measurement at the beginning of experiment); h<sub>1</sub>, h<sub>2</sub>, h<sub>3</sub>, h<sub>4</sub> = height increments at the end of the first, second, third, and fourth month after planting; SD=Standard Deviation.

**Table 7.** The soil physicochemical properties in the study plot.

| Soil chemical properties            | At the beginning of the study | At the end of the study |
|-------------------------------------|-------------------------------|-------------------------|
| pH (H <sub>2</sub> O)               | 4.09                          | 4.83                    |
| pH (KCl)                            | 3.35                          | 4.16                    |
| C organic (%)                       | 2.65                          | 3.76                    |
| N total (%)                         | 0.16                          | 0.23                    |
| P <sub>2</sub> O <sub>5</sub> (ppm) | 19.47                         | 23.10                   |
| K <sub>2</sub> O (ppm)              | 100.15                        | 113.56                  |
| Texture                             | Sandy Loam (SL)               | Sandy Loam (SL)         |

data indicated that the diameter and height of *A. cadamba* increased from month to month. However, the diameter and height increments of *A. cadamba* trees on the steep slope were lower than those on the slightly steep slope. This result implied that slope gradient might affect plant growth parameter, especially the stem diameter and plant height. Furthermore, the soil erosion and nutrient leaching were relatively higher in the steeper slope than those in a less steep slope. Moreover, the ground coverage of the *G. max* on the steep plot was found to be lower than that on the slightly steep plot.

The *G. max* might indirectly influence the diameter and height growth of the *A. cadamba*. It is likely that the *G. max* supplied additional organic materials through the decomposition of leaf litter. This process contributed an extra source of organic materials for the growth of the *A. cadamba*. Interestingly, the chemical analyses indicated that soil nutrient contents (C organic, N total, P, and K) in the experimental plot increased during the study. Meanwhile, a change was observed in the soil pH (H<sub>2</sub>O), from 4.12 (at the beginning of the experiment) to 4.93 (at the end of the study), as presented in Table 7.

**Hydro-ological aspect**

The surface runoff and eroded soil mass are influenced by many factors, such as the rainfall, soil erodibility, slope, vegetation, and management practice. During the study, the rainfalls were measured in the 35 occurrences of rain. Table 8 below presents the rainfall data and surface runoff volume of the agroforestry system on the two different slopes and the control plot, whereas the rainfall data and eroded soil mass of the agroforestry system on the two different slopes and control plot are presented in Table 9.

The result showed that in the event of high rainfall, the amount of surface runoff and eroded soil mass varied widely. The slope is not the only one factor that influences soil erosion. Generally, soil erosion was influenced by climate, soil, slope length and gradient, vegetation, and land management practices. However, in the steeper slope lands, the rainfall flowed to the lower area faster and more easily. It will lead to surface runoff and eroded soil mass as well erosion rate. The runoff rate increased from 20% to 90% by increasing slope and rain intensity (Chaplot and LeBissonnais 2000). In addition, the slope steepness and length influence the potential soil erosion. The erosion rate is also affected by soil properties, especially soil texture.

**Table 8.** Rainfall and surface runoff volume of agroforestry system on two different slopes and control plot

| Rain event | Rainfall (mm) | Surface runoff (l/30 m <sup>2</sup> ) |                                |                       |
|------------|---------------|---------------------------------------|--------------------------------|-----------------------|
|            |               | Control plot (>8-15%)                 | Slightly steep slope (>15-25%) | Steep slope (>25-45%) |
| 1          | 24.38         | 36.67                                 | 22.32                          | 33.48                 |
| 2          | 5.97          | 28.18                                 | 24.13                          | 29.25                 |
| 3          | 14.43         | 26.22                                 | 21.94                          | 30.14                 |
| 4          | 55.23         | 11.13                                 | 28.93                          | 37.39                 |
| 5          | 12.69         | 12.71                                 | 25.18                          | 32.81                 |
| 6          | 42.30         | 15.30                                 | 31.00                          | 33.06                 |
| 7          | 26.37         | 14.70                                 | 31.41                          | 32.65                 |
| 8          | 6.72          | 41.20                                 | 32.65                          | 34.72                 |
| 9          | 8.46          | 25.71                                 | 23.08                          | 29.17                 |
| 10         | 36.33         | 15.82                                 | 24.13                          | 29.73                 |
| 11         | 8.96          | 5.12                                  | 19.17                          | 27.47                 |
| 12         | 14.18         | 38.40                                 | 28.52                          | 40.34                 |
| 13         | 13.44         | 30.10                                 | 19.73                          | 21.08                 |
| 14         | 13.68         | 24.34                                 | 28.49                          | 37.39                 |
| 15         | 2.99          | 10.29                                 | 12.46                          | 17.80                 |
| 16         | 2.49          | 24.35                                 | 4.32                           | 5.47                  |
| 17         | 17.42         | 39.40                                 | 27.85                          | 31.67                 |
| 18         | 19.66         | 25.10                                 | 21.68                          | 31.47                 |
| 19         | 29.86         | 28.20                                 | 32.94                          | 36.50                 |
| 20         | 8.71          | 8.50                                  | 22.89                          | 27.98                 |
| 21         | 38.81         | 41.70                                 | 29.76                          | 33.89                 |
| 22         | 7.71          | 28.62                                 | 23.84                          | 27.98                 |
| 23         | 17.17         | 24.70                                 | 28.61                          | 31.28                 |
| 24         | 26.87         | 4.00                                  | 30.90                          | 36.48                 |
| 25         | 2.74          | 8.50                                  | 8.98                           | 10.43                 |
| 26         | 2.74          | 4.60                                  | 8.90                           | 10.17                 |
| 27         | 2.74          | 11.20                                 | 5.56                           | 6.36                  |
| 28         | 3.98          | 14.50                                 | 3.10                           | 3.77                  |
| 29         | 5.47          | 18.95                                 | 18.57                          | 20.35                 |
| 30         | 3.73          | 3.50                                  | 5.40                           | 6.28                  |
| 31         | 15.43         | 20.10                                 | 15.09                          | 17.98                 |
| 32         | 43.29         | 14.20                                 | 25.94                          | 31.28                 |
| 33         | 18.66         | 40.10                                 | 21.75                          | 24.04                 |
| 34         | 45.28         | 37.85                                 | 30.71                          | 38.72                 |
| 35         | 10.45         | 25.20                                 | 26.86                          | 33.06                 |
| Total      | 609.34        | 759.16                                | 766.79                         | 931.64                |
| Mean       | 17.41         | 21.69                                 | 21.91                          | 26.62                 |

**Table 9.** Rainfall and eroded soil mass of agroforestry system on two different slopes and control plot

| Rain event | Rainfall (mm) | Eroded soil mass (g/30 m <sup>2</sup> ) |                                |                       |
|------------|---------------|---|--------------------------------|-----------------------|
|            |               | Control plot (>8-15%)                   | Slightly steep slope (>15-25%) | Steep slope (>25-45%) |
| 1          | 24.38         | 1253.20                                 | 1102.69                        | 2181.22               |
| 2          | 5.97          | 975.35                                  | 249.35                         | 473.07                |
| 3          | 14.43         | 890.13                                  | 251.54                         | 287.66                |
| 4          | 55.23         | 305.12                                  | 3172.64                        | 8449.68               |
| 5          | 12.69         | 294.78                                  | 364.72                         | 788.45                |
| 6          | 42.30         | 320.15                                  | 2344.25                        | 3114.39               |
| 7          | 26.37         | 306.75                                  | 819.17                         | 1400.90               |
| 8          | 6.72          | 4010.12                                 | 505.88                         | 758.25                |
| 9          | 8.46          | 790.80                                  | 802.95                         | 1057.04               |
| 10         | 36.33         | 360.24                                  | 1223.31                        | 1895.34               |
| 11         | 8.96          | 200.15                                  | 456.10                         | 669.55                |
| 12         | 14.18         | 3050.60                                 | 386.85                         | 1340.88               |
| 13         | 13.44         | 1120.16                                 | 422.11                         | 704.33                |
| 14         | 13.68         | 760.15                                  | 779.81                         | 952.25                |
| 15         | 2.99          | 190.60                                  | 1443.44                        | 493.10                |
| 16         | 2.49          | 800.10                                  | 76.56                          | 412.16                |
| 17         | 17.42         | 2120.75                                 | 605.84                         | 856.62                |
| 18         | 19.66         | 950.26                                  | 975.01                         | 1350.04               |
| 19         | 29.86         | 1100.15                                 | 1110.96                        | 1294.08               |
| 20         | 8.71          | 210.36                                  | 272.14                         | 296.05                |
| 21         | 38.81         | 3810.65                                 | 949.77                         | 1650.16               |
| 22         | 7.71          | 1320.10                                 | 237.81                         | 248.81                |
| 23         | 17.17         | 1105.15                                 | 1112.48                        | 1443.63               |
| 24         | 26.87         | 100.25                                  | 767.41                         | 865.07                |
| 25         | 2.74          | 208.68                                  | 128.95                         | 292.36                |
| 26         | 2.74          | 150.18                                  | 66.38                          | 298.34                |
| 27         | 2.74          | 200.75                                  | 65.97                          | 461.63                |
| 28         | 3.98          | 350.17                                  | 25.94                          | 199.72                |
| 29         | 5.47          | 400.86                                  | 259.43                         | 385.39                |
| 30         | 3.73          | 70.65                                   | 27.98                          | 197.37                |
| 31         | 15.43         | 450.21                                  | 134.74                         | 224.46                |
| 32         | 43.29         | 200.68                                  | 412.79                         | 515.80                |
| 33         | 18.66         | 2985.10                                 | 154.51                         | 358.62                |
| 34         | 45.28         | 1895.36                                 | 510.97                         | 570.74                |
| 35         | 10.45         | 190.70                                  | 271.13                         | 273.67                |
| Total      | 609.34        | 33449.41                                | 22491.58                       | 36760.83              |
| Mean       | 17.41         | 955.70                                  | 642.62                         | 1050.31               |

26

The soil texture in the study site is sandy loam characterized by the fine texture as presented in Table 7. This soil has low water infiltration capacity. Additionally, low rainfall has caused a surface runoff in the surface soil. Fine soil grains do not form a stable soil structure easily because of the fragile cohesion between their particles, thereby highly susceptible to erosion (A'Yunin 2008).

The evaluation of erosion hazard is an assessment and prediction on the scale of soil erosion and its potential danger on a particular plot of land. Therefore, the erosion hazard level can be used as an indicator of whether the erosion is at a threatening level or is hazardous for a land. For sloping lands, the tolerable soil loss is 25 ton ha<sup>-1</sup>year<sup>-1</sup> at a soil depth of more than 100 cm (Rahim 1995). The potential erosion rates in slightly steep slope and steep slope plots in this study were 32.13 ton ha<sup>-1</sup>year<sup>-1</sup> and 52.51 ton ha<sup>-1</sup>year<sup>-1</sup> respectively. Moreover, the erosion hazard

index of 1.29 (low) and 2.10 (moderate) were observed in slightly steep slope and steep slope plots.

As the soil depth in the plot was more than 90 cm and the erosion rate of both slightly steep slope and steep slope plots were in the range between 15 ton ha<sup>-1</sup>year<sup>-1</sup> and 60 ton ha<sup>-1</sup>year<sup>-1</sup>, the erosion hazard level of the study plots would be classified as the low erosion hazard according to classification system as described previously in Table 2. This result indicated that the agroforestry system of *A. cadamba-G. max* would be able to suppress the potential erosion rate. The implementation of *A. cadamba-G. max* agroforestry system could reduce the erosion rate to a degree classified as the low erosion hazard. The surface runoff rate, potential erosion rate, erosion hazard index, and erosion hazard level found in this study are shown in Table 10. The soil erosion rate of agroforestry system of *A. cadamba* and *G. max* on different slope lands in the study

**Table 10.** The hydro-ological parameters in the study site.

| Planting system                   | Slope gradient       | Surface runoff rate (m <sup>3</sup> ha <sup>-1</sup> year <sup>-1</sup> ) | Potential erosion rate (ton ha <sup>-1</sup> year <sup>-1</sup> ) | Tolerable erosion rate (ton ha <sup>-1</sup> year <sup>-1</sup> ) | Erosion hazard index | Erosion hazard level |
|-----------------------------------|----------------------|---|---|---|----------------------|----------------------|
| No plantation                     | >8-15% <sup>1)</sup> | 1012.21   | 45.53   | 25 <sup>1)</sup>  | 1.82 (Moderate)      | Low                  |
| <i>A. cadamba</i> - <i>G. max</i> | >15-25%              | 1095.43   | 32.13   | 25 <sup>1)</sup>  | 1.29 (Low)           | Low                  |
| <i>A. cadamba</i> - <i>G. max</i> | >25-45%              | 1330.89   | 52.51   | 25 <sup>1)</sup>  | 2.10 (Moderate)      | Low                  |

Note: <sup>1)</sup>Soil depth in the study plot was >100 cm and the tolerable erosion rate for hills or slope lands was 25 ton ha<sup>-1</sup> year<sup>-1</sup> (Rahim 1995)

**Table 11.** The soil erosion in the different plantation systems

| Planting system  | Erosion (ton ha <sup>-1</sup> year <sup>-1</sup> ) | Location   | Researcher (year)        |
|--|--|--|--------------------------|
| Monoculture agricultural   | 90.92  | Krueng Simpo Sub Watershed, Aceh Province, Indonesia                                     | Fitri (2011)             |
| Soil and water conservation technique and application of agroforestry system | 190.08   | Ngadipiro Village, Nguntoronadi Sub-district, Wonogiri District, Central Java, Indonesia | Sumarno et al. (2011)    |
| <i>G. arborea</i> + silt pit with 5 m distance                               | 5.1  | Banten, Indonesia  | Pratiwi and Salim (2013) |
| <i>G. arborea</i> + silt pit with 10 m distance                              | 5.6  |  |                          |
| <i>G. arborea</i> + without silt pit (control)                               | 5.9  |  |                          |
| Agroforestry system of <i>A. cadamba</i> and <i>G. max</i>                   |  | East Kalimantan, Indonesia   | This study               |
| Slope of >15-25%   | 32.13  |  |                          |
| Slope of >25-45%   | 52.51  |  |                          |

site was lower than those in monoculture agricultural (Fitri 2011) and application of agroforestry system (Sumarno et al. 2011) as presented in Table 11. This result implied that the mixed cropping of *A. cadamba* and *G. max* could be implemented for rehabilitating and conserving sloping lands.

The application of agroforestry system in different soil slopes is viable and useful based on the growth and hydro-ological parameters. The information on growth and hydro-ological aspects, as well as economic aspects, are important as the basic data for all stakeholders, including private parties and the government, in particular, the Ministry of Environment and Forestry and Ministry of Agriculture of the Republic of Indonesia which deal with the land rehabilitation and soil conservation programs.

## ACKNOWLEDGEMENTS

The authors would like to extend sincere thanks to the Indonesian Ministry of Research, Technology and Higher Education (Kemenristek Dikti RI) for the financial support (Penelitian Strategis Nasional Institusi) to conduct this research project.

## REFERENCES

ADB. 2016. Indonesia Country Water Assessment. Manila. (PATA 8432-INO). ADB, Mandaluyong City, Philippines.

- Aiao JS, Shuaibu RB. 2013. Agroforestry practices and concepts in sustainable land use systems in Nigeria. *J Hort For* 5 (10): 156-159.
- A'Yunin Q. 2008. Prediction of erosion hazard level with USLE method on the eastern slope of Mount Sindoro [Hon. Thesis]. Faculty of Agriculture, Sebelas Maret University, Surakarta. [Indonesian]
- Budiastuti S. 2013. Agroforestry system as alternative facing season shift for food security achievement. *Ekosains* 5 (1): 1-5. [Indonesian]
- Caliskan S, Arslan M, Uremis I, Caliskan ME. 2007. The effects of row spacing on yield and yield components of full season and double-cropped soybean. *Turk J Agric For* 31: 147-154.
- Chaplot V, LeBissonnais Y. 2000. Field measurements of interrill erosion under different slopes and plot sizes. *Earth Surf Proces Landf* 25: 145-153.
- Daswir. 2010. Role of seraiwangi as a conservation plant at cocoa plantation on critical land. *Bul. Littro* 21 (2): 117-128. [Indonesian]
- Dogbe W, Etwire PM, Martey E, Etwire JC, Baba IY, Sisse A. 2013. Economics of soybean production: Evidence from Saboba and Chereponi Districts of Northern Region of Ghana. *Agric Sci* 5 (12): 38-46.
- Fitri R. 2011. Prediction of erosion on agricultural land in Krueng Simpo sub watershed Aceh Province. *J Hidrolitan* 2 (3): 96-102. [Indonesian]
- Fuady Z, Satriawan H, Mayani N. 2014. Runoff, erosion and nutrient sediment due to the vegetative soil conservation on oil palm plantation. *Jurnal Ilmu Tanah dan Agroklimatologi* 11 (2): 95-103 [Indonesian]
- Hammer WI. 1981. Second soil conservation consultant report. AGOF/INS/78/006. Tech. Note No. 10. Centre for Soil Research, Bogor.
- Hartoyo APP, Wijayanto N, Budi RSW. 2014. The physiological response and production of soybeans (*Glycine max* (L.) Merrill) tolerant shading based on agroforestry of sengon (*Paraserianthes falcataria* (L.) Nielsen). *Jurnal Silviculture Tropika* 05 (2): 84-90. [Indonesian]
- Idjudin AA. 2011. The role of land conservation in plantation management. *J Land Resour* 5 (2): 103-116. [Indonesian]
- Jauhari AM, Wijayanto N, Rusdiana O. 2016. Mindi (*Melia azedarach* Linn.) growth and soybean (*Glycine max* (L.) Merrill) production of



- agroforestry pattern on the sour land. *Jurnal Silviculture Tropika* 7 (3): 198-204. [Indonesian]
- Juhaeti T, Syarif F, Hidayati N. 2005. Inventarization of potential plant for phytoremediation on degraded land and water mined. *Biodiversitas* 6 (1): 31-33. [Indonesian]
- Karmini, Sarminah S, Karyati. 2017. Economic analysis of groundnut (*Arachis hypogaea*) and soybean (*Glycine max*) as intercropping plants in two agroforestry systems. *Biodiversitas* 18 (2): 483-493.
- Karyati. 2008. Intercropping management system (agroforestry temporal) in Jati (*Tectona grandis* Linn. f.) forest. *Lembusana* 8: 1-7. [Indonesian]
- Karyati. 2015. Influence of climate on tourist visit in Mulawarman University Botanical Garden Samarinda (KRUS). *Jurnal Riset Kaltim* 3 (1): 51-59. [Indonesian]
- Karyati, Ardianto S. 2016. The dynamics of soil temperature in different depths in Education Forest of Faculty of Forestry, Mulawarman University. *Jurnal Riset Kaltim* 4 (1): 1-12. [Indonesian]
- Karyati, Ardiyanto S, Syafrudin M. 2016. The fluctuation of microclimate in Education Forest Forestry Faculty Mulawarman University. *Agrifor* 15 (1): 83-92. [Indonesian]
- Karyati, Ipor IB, Jusoh I, Wasli ME. 2017. The diameter increment of selected tree species in a secondary tropical forest in Sarawak, Malaysia. *Biodiversitas* 18 (1): 304-311.
- Krisnawati H, Kallio M, Kanninen M. 2011. *Anthocephalus cadamba* Miq. Ecology, Silviculture, and Productivity. Center for International Forestry Research (CIFOR), Bogor.
- KRUS. 2013. Annual report of Mulawarman University Botanical Garden Samarinda (KRUS) 2013. KRUS, Samarinda. [Indonesian]
- KRUS. 2014. Annual report of Mulawarman University Botanical Garden Samarinda (KRUS) 2014. KRUS, Samarinda. [Indonesian]
- Matatula. 2009. Effort of critical land rehabilitation using agroforestry technology application of silvopastoral system in Oebola Village Fatuleu District Kupang Regency. *Inotek* 13 (1): 63-74. [Indonesian]
- NRCS. 2002. Field book for describing and sampling soils, Version 2.0. In: Schoeneberger PJ, Wysocki DA, Benham EC, Broderson WD, editors. Lincoln, NE: Natural Resources Conservation Service, National Soil Survey Centre.
- Pratiwi, Salim AG. 2013. Application of silt pit soil conservation system on gmelina (*Gmelina arborea* Roxb.) planting in forest area in special purposes Carita, Banten. *Jurnal Penelitian Hutan dan Konservasi Alam* 10 (3): 273-82. [Indonesian]
- Regulation of Ministry of Forestry Republic of Indonesia Number: P.60/Menhut-II/2009. [Indonesian]
- Regulation of Directorate General of Watershed Management and Social Forestry, Ministry of Forestry Republic of Indonesia Number: P.4/V-SET/2013. [Indonesian]
- Rahim SE. 1995. Soil erosion and its estimation modelling in environmental dynamics of South Sumatera. PPLH Lembaga Penelitian Universitas Sriwijaya. [Indonesian]
- Sarminah S. 2014. Modeling of land rehabilitation technique and soil conservation on critical land. *Lembusana* XIV (158): 33-39. [Indonesian]
- Sarminah S, Karyati, Karmini, Simbolon J, Tambunan E. 2018. Rehabilitation and soil conservation of degraded land using sengon (*Falcataria moluccana*) and peanut (*Arachis hypogaea*) agroforestry system. *Biodiversitas* 19 (1): 222-28.
- Statistics of Indonesia. 2017. Indonesia in number 2017. Jakarta: Statistics of Indonesia. [Indonesian]
- Sumarmo, Winamo J, Prastomo I. 2011. Land management study based on the degree of erosion hazard and water and soil conservation pattern in Ngadipiro, Nguntoronadi, Wonogiri. *Jurnal Ilmu Tanah dan Agroklimatologi* 8 (1): 13-22. [Indonesian]
- Syam A. 2003. Dryland management system in upper watershed. *Jurnal Litbang Pertanian* 22 (40): 162-171. [Indonesian]
- Zoundji CC, Houngnandan P, Dedehouanou H, Toukourou F. 2015. Determinants of soybean [*Glycine max* (L.) Merrill] production system in Benin. *Exp Biol Agric Sci* 3 (5): 430-439.

# The Mixed Cropping

---

## ORIGINALITY REPORT

---

8%

SIMILARITY INDEX

%

INTERNET SOURCES

8%

PUBLICATIONS

%

STUDENT PAPERS

---

## PRIMARY SOURCES

---

- 1** Yong-Gang Li. "Response of *Cercospora beticola* in sugar beet at different cultivars and fertilization level", *African Journal of Microbiology Research*, 2011  
Publication 1%
- 2** "Proceeding of the 1st International Conference on Tropical Agriculture", Springer Nature, 2017  
Publication 1%
- 3** Harlinda Kuspradini, Indah Wulandari, Agmi Sinta Putri, Sabeti Yulis Tiya, Irawan Wijaya Kusuma. "Phytochemical, antioxidant and antimicrobial properties of *Litsea angulata* extracts", *F1000Research*, 2019  
Publication 1%
- 4** T.L. Kieft, E.M. Murphy, D.L. Haldeman, P.S. Amy et al. "Microbial Transport, Survival, and Succession in a Sequence of Buried Sediments", *Microbial Ecology*, 1998  
Publication 1%
- 5** Innovations as Key to the Green Revolution in <1%

## Africa, 2011.

Publication

---

6

Farhan, Yahya, Dalal Zregat, and Ali Anbar. "Assessing Farmers' Perception of Soil Erosion Risk in Northern Jordan", Journal of Environmental Protection, 2015.

Publication

---

7

BAKAL, Halil, GULLUOGLU, Leyla, ONAT, Bihter and ARIOGLU, Halis. "THE EFFECT OF GROWING SEASONS ON SOME AGRONOMIC AND QUALITY CHARACTERISTICS OF SOYBEAN VARIETIES IN MEDITERRANEAN REGION IN TURKEY", Tarla Bitkileri Bilimi Derneği, 2017.

Publication

---

8

ÇALIŞKAN, Sevgi, ARSLAN, Mehmet, ÜREMİŞ, İlhan and ÇALIŞKAN, Mehmet Emin. "The effects of row spacing on yield and yield components of full season and double-cropped soybean", TÜBİTAK, 2007.

Publication

---

9

Yus Andhini Bhekti Pertiwi, Haruna Aiso, Futoshi Ishiguri, Sri Nugroho Marsoem, Shinso Yokota. " Radial variation of wood properties in trees from an East Java community forest ", Southern Forests: a Journal of Forest Science, 2018

Publication

<1%

<1%

<1%

<1%

10

Anthocephalus cadamba Miq Ecology  
silviculture and productivity, 2011.

Publication

&lt;1%

11

Aruleba, J. O., and A. S. Ajayi. "Classification,  
Characterization, and Suitability Evaluation of  
the Savanna Soils of Oyo North of Nigeria",  
Developments in Soil Classification Land Use  
Planning and Policy Implications, 2013.

Publication

&lt;1%

12

Khairul Amri, Loparedo Nugraha, Muhammad  
Faiz Barchia. "Critical level of water recharges in  
the catchment areas of Manna watershed  
Bengkulu Province Indonesia", AIP Publishing,  
2017

Publication

&lt;1%

13

H.-P. Blume. "Mitteilungen der Deutschen  
Bodenkundlichen Gesellschaft", Zeitschrift für  
Pflanzenernährung und Bodenkunde, 1995

Publication

&lt;1%

14

Halus Satriawan, Erwin Masrul Harahap,  
Abubakar Karim. "Effectiveness Of Soil  
Conservation To Erosion Control On Several  
Land Use Types", Agriculture  
(Polnohospodárstvo), 2015

Publication

&lt;1%

15

Khairul Armi, Muhammad Faiz Barchia, Yuzuar  
Aprizal. "Analysis of erosion hazardous level

&lt;1%

and sedimentation in Manna Watershed,  
Bengkulu Province Indonesia", MATEC Web of  
Conferences, 2017

Publication

---

16

Racquel Kim Sherwood, Christine M. Scaduto,  
Sandra E. Torres, Richard J. Bennett.

"Convergent evolution of a fused sexual cycle  
promotes the haploid lifestyle", Nature, 2014

Publication

---

17

Bes de Berc, S.. "Geomorphic evidence of  
active deformation and uplift in a modern  
continental wedge-top-foredeep transition:  
Example of the eastern Ecuadorian Andes",  
Tectonophysics, 20050427

Publication

---

18

Abderrezak Kamel Toubal, Mohammed Achite,  
Sylvain Ouillon, Abdelatif Dehni. "Soil erodibility  
mapping using the RUSLE model to prioritize  
erosion control in the Wadi Sahouat basin,  
North-West of Algeria", Environmental  
Monitoring and Assessment, 2018

Publication

---

19

Merino, A.. "Soil fertility rehabilitation in young  
Pinus radiata D. Don. plantations from northern  
Spain after intensive site preparation", Forest  
Ecology and Management, 19990412

Publication

---

<1%

<1%

<1%

<1%

20

Ala' A. Khaleel, Thomas J. Sauer, John C. Tyndall. "Changes in deep soil organic carbon and soil properties beneath tree windbreak plantings in the U.S. Great Plains", *Agroforestry Systems*, 2019

Publication

&lt;1%

21

H. Shahandeh, S. J. Blanton-Knewton, M. Doumbia, F. M. Hons, L. R. Hossner. "Nitrogen dynamics in tropical soils of Mali, West Africa", *Biology and Fertility of Soils*, 2004

Publication

&lt;1%

22

Rune S. Ødegård. "Terrain analyses and surface velocity measurements of the Hiorthfjellet rock glacier, Svalbard", *Permafrost and Periglacial Processes*, 10/2003

Publication

&lt;1%

23

Michael P. Thompson, Teresa M. Waters, Erin K. Kaplan, Caitlin N. McKillop, Mike G. Martin. "Hospital volume and acute myeloid leukemia mortality in Medicare beneficiaries aged 65 years and older", *Blood*, 2016

Publication

&lt;1%

24

P. T. Owombo, F. O. Idumah. "Determinants of agroforestry technology adoption among arable crop farmers in Ondo state, Nigeria: an empirical investigation", *Agroforestry Systems*, 2016

&lt;1%

25

Helder Viana, Domingos, Jos Aranh. "Chapter 6 Assessment of Forest Aboveground Biomass Stocks and Dynamics with Inventory Data, Remotely Sensed Imagery and Geostatistics", InTech, 2011

Publication

---

<1%

26

Huang, M.. "Use of the SHAW model to assess soil water recovery after apple trees in the gully region of the Loess Plateau, China", Agricultural Water Management, 20060916

Publication

---

<1%

27

David M. Close, William H. Nelson, William A. Bernhard. "DNA Damage by the Direct Effect of Ionizing Radiation: Products Produced by Two Sequential One-Electron Oxidations", The Journal of Physical Chemistry A, 2013

Publication

---

<1%

28

Bentley, S.J.. "Event sedimentation, bioturbation, and preserved sedimentary fabric: Field and model comparisons in three contrasting marine settings", Continental Shelf Research, 200611

Publication

---

<1%

29

Ilse de Jager, Ken E. Giller, Inge D. Brouwer. "Food and nutrient gaps in rural Northern Ghana: Does production of smallholder farming

<1%

households support adoption of food-based dietary guidelines?", PLOS ONE, 2018

Publication

---

30

Ignatius Sriyana. "Developed watershed classification index determining management priority level based on watershed carrying capacity", MATEC Web of Conferences, 2019

Publication

---

<1%

31

Abraham Sanchez, Marianella Ojeda, Humberto Gomez, Carlos Bermejo et al. "Review and Analysis of Repair/Rehabilitation Methods for Natural Gas Pipelines", Volume 14: Emerging Technologies; Materials: Genetics to Structures; Safety Engineering and Risk Analysis, 2017

Publication

---

<1%

---

Exclude quotes  On

Exclude matches  < 3 words

Exclude bibliography  On